



Chipsmall Limited consists of a professional team with an average of over 10 year of expertise in the distribution of electronic components. Based in Hongkong, we have already established firm and mutual-benefit business relationships with customers from,Europe,America and south Asia,supplying obsolete and hard-to-find components to meet their specific needs.

With the principle of “Quality Parts,Customers Priority,Honest Operation,and Considerate Service”,our business mainly focus on the distribution of electronic components. Line cards we deal with include Microchip,ALPS,ROHM,Xilinx,Pulse,ON,Everlight and Freescale. Main products comprise IC,Modules,Potentiometer,IC Socket,Relay,Connector.Our parts cover such applications as commercial,industrial, and automotives areas.

We are looking forward to setting up business relationship with you and hope to provide you with the best service and solution. Let us make a better world for our industry!



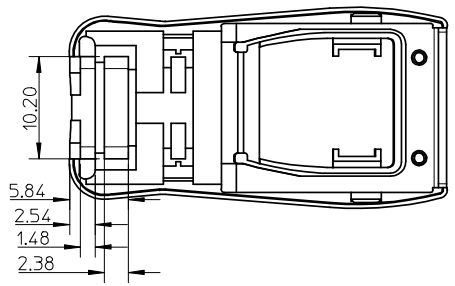
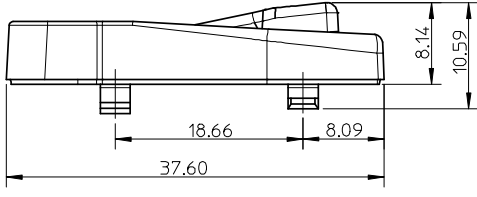
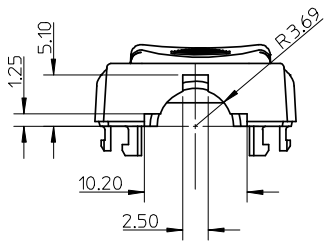
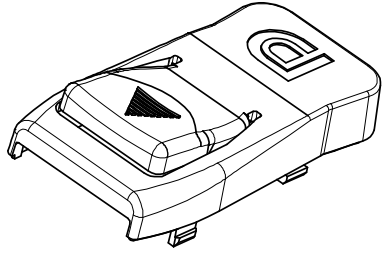
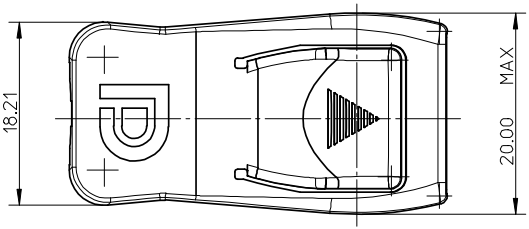
Contact us

Tel: +86-755-8981 8866 Fax: +86-755-8427 6832

Email & Skype: info@chipsmall.com Web: www.chipsmall.com

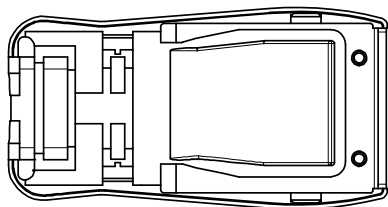
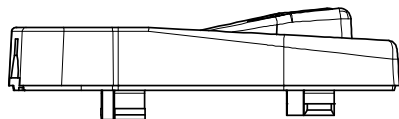
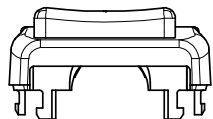
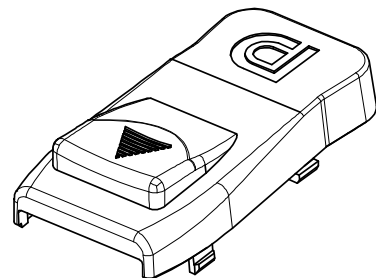
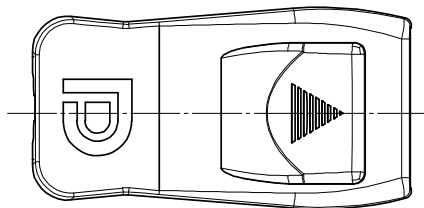
Address: A1208, Overseas Decoration Building, #122 Zhenhua RD., Futian, Shenzhen, China





NOTES:
 1.MATERIAL : HGH TEMPERATURE THERMAL PLASTIC, UL94HB, BLACK.
 2.PRODUCT COMPLANT TO ROHS DIERTIVE 2002/95/EC
 AND ELV DIRECTIVE 2000/53/EC

NEW RELEASE EC NO: SH2008-0288 DRW: HHE CHK: RZHANG APPR: HWANG	2008/04/07 2008/04/08 2008/04/25	DESCRIPTION REV	QUALITY SYMBOLS	GENERAL TOLERANCES (UNLESS SPECIFIED) mm INCH 4 PLACES ± --- ± --- 3 PLACES ± --- ± --- 2 PLACES ± 0.2 ± --- 1 PLACE ± 0.2 ± --- ANGULAR ± 2 °	DIMENSION STYLE	SCALE	DESIGN UNITS	THIRD ANGLE PROJECTION	
					MM ONLY	2:1	METRIC		
					DRAWN BY	DATE	TITLE		
					QWFANG	2006/09/05	COVER-UP FOR DISPLAYPORT		
	CHECKED BY	DATE	MOLEX INCORPORATED						
	IWANG	2006/09/05	DOCUMENT NO.						
	APPROVED BY	DATE	SHEET NO.						
	JNCHEN	2006/09/05	1 OF 2						
	MATERIAL NO.	47271-0004	SD-47271-004						
DRAFT WHERE APPLICABLE MUST REMAIN WITHIN DIMENSIONS					THIS DRAWING CONTAINS INFORMATION THAT IS PROPRIETARY TO MOLEX INCORPORATED AND SHOULD NOT BE USED WITHOUT WRITTEN PERMISSION				



NOTES:

1. THIS COMPONENT'S BUTTON IS FIXED.
2. UNSPECIFIED DIMENSIONS ARE SAME AS 47271-0004.

SEE SHEET1 EC NO: SH2008-0288 DRWN: HHE CHKD: RZHANG APPR: HWANG	2008/04/07 2008/04/25	DESCRIPTION REV	QUALITY SYMBOLS ▽=0 ◻=0	GENERAL TOLERANCES (UNLESS SPECIFIED)		DIMENSION STYLE MM ONLY		SCALE 2:1	DESIGN UNITS METRIC	THIRD ANGLE PROJECTION			
				4 PLACES ± --- ± --- 3 PLACES ± --- ± --- 2 PLACES ± 0.2 ± --- 1 PLACE ± 0.2 ± ---	mm INCH	DRAWN BY QWFANG	DATE 2006/09/05	TITLE COVER-UP FOR DISPLAYPORT					
				ANGULAR ± 2 °	CHECKED BY IWANG	DATE 2006/09/05	APPROVED BY JNCHEN						
				DRAFT WHERE APPLICABLE MUST REMAIN WITHIN DIMENSIONS	MATERIAL NO. 47271-1004	DATE 2006/09/05	MOLEX INCORPORATED		DOCUMENT NO. SD-47271-004	SHEET NO. 2 OF 2			