



Chipsmall Limited consists of a professional team with an average of over 10 year of expertise in the distribution of electronic components. Based in Hongkong, we have already established firm and mutual-benefit business relationships with customers from,Europe,America and south Asia,supplying obsolete and hard-to-find components to meet their specific needs.

With the principle of “Quality Parts,Customers Priority,Honest Operation,and Considerate Service”,our business mainly focus on the distribution of electronic components. Line cards we deal with include Microchip,ALPS,ROHM,Xilinx,Pulse,ON,Everlight and Freescale. Main products comprise IC,Modules,Potentiometer,IC Socket,Relay,Connector.Our parts cover such applications as commercial,industrial, and automotives areas.

We are looking forward to setting up business relationship with you and hope to provide you with the best service and solution. Let us make a better world for our industry!



## Contact us

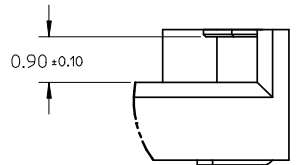
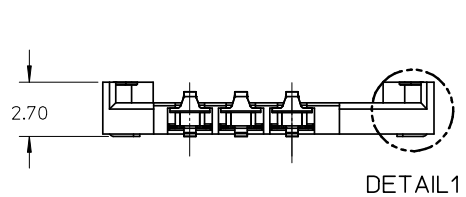
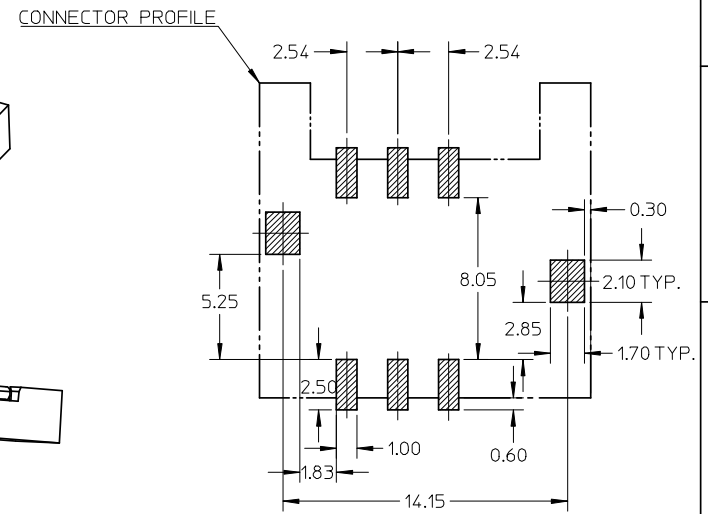
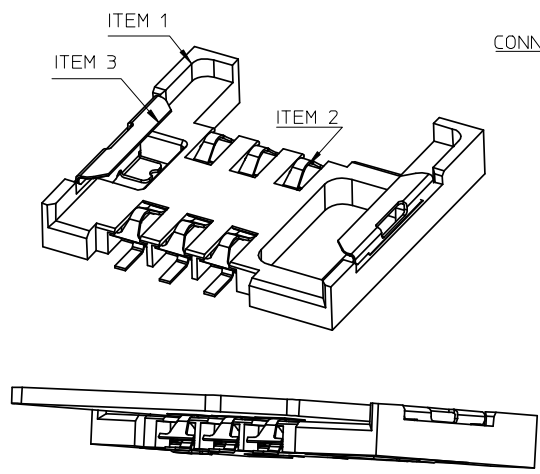
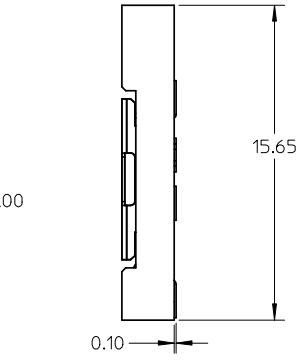
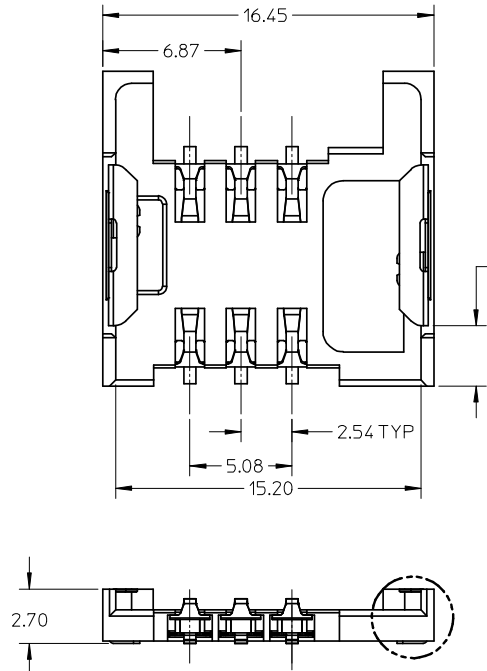
Tel: +86-755-8981 8866 Fax: +86-755-8427 6832

Email & Skype: info@chipsmall.com Web: www.chipsmall.com

Address: A1208, Overseas Decoration Building, #122 Zhenhua RD., Futian, Shenzhen, China



10 9 8 7 6 5 4 3 2 1



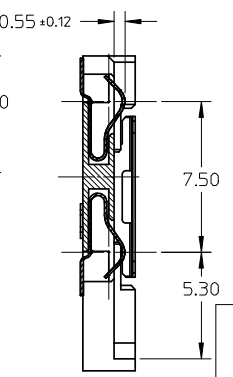
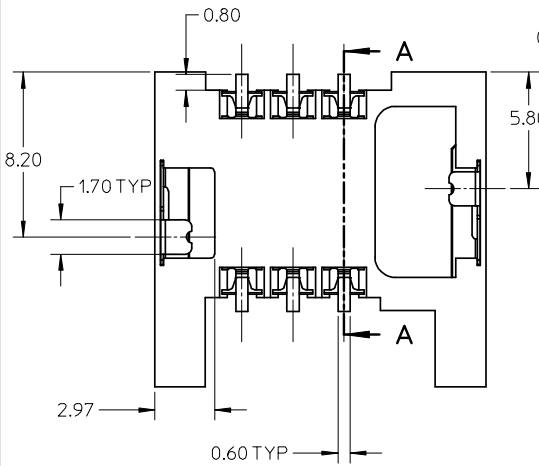
DETAIL1

DETAIL1

NOTES:

- 1.MATERIAL:  
HOUSING: LCP, GLASS-FILLED, UL 94V-0, COLOR .BLACK.  
TERMINAL: 0.12MM PHOSPHOR BRONZE.  
SHELL: STAINLESS STEEL.
- 2.FINISH:  
TERMINAL CONTACT AREA: 0.75 MICRON GOLD MIN OVERALL 1.25 MICRON NICKEL MIN.  
TERMINAL SOLDER AREA: GOLD FLASH OVERALL 1.25 MICRON NICKEL MIN.  
SHELL: GOLD FLASH OVER SOLDERING PAD, 2.0 MICRON NICKEL MIN. OVERALL
- 3.COPLANARITY: 0.1MM MAX AMONG SOLDER TAILS AND FITTING NAILS.
- 4.PRODUCT SPECIFICATION: PS-47273-001.
- 5.PRODUCT COMPLIANT TO ROHS DIRECTIVE 2002/95/EC AND ELV DIRECTIVE 2000/53/EC

RECOMMENDED PCB LAYOUT



SECTION A-A

ITEM	NAME	MATERIAL NO.
1	HOUSING	472730002
2	TERMINAL	472730003
3	SHELL	472730004

REVISED  
EC NO: SH2008-0256  
DRWN: YPWU 2007/11/05  
CHKD:  
APPR:

QUALITY SYMBOLS  
▽=0  
∇=0

GENERAL TOLERANCES (UNLESS SPECIFIED)  
mm INCH  
4 PLACES ± --- ± ---  
3 PLACES ± --- ± ---  
2 PLACES ± 0.2 ± ---  
1 PLACE ± --- ± ---  
ANGULAR ± 3 °  
DRAFT WHERE APPLICABLE MUST REMAIN WITHIN DIMENSIONS

DIMENSION STYLE  
MM ONLY  
DRAWN BY OYANG DATE 2005-08-31  
CHECKED BY Y. J. WU DATE 2005-08-31  
APPROVED BY VINCENT DATE 2005-08-31  
MATERIAL NO. 472730001

SCALE 4:1  
DESIGN UNITS METRIC  
THIRD ANGLE PROJECTION  
TITLE SIM CARD CONNECTOR SALES DRAWING  
MOLEX INCORPORATED  
DOCUMENT NO. SD-47273-001  
SHEET NO. 1 OF 1  
THIS DRAWING CONTAINS INFORMATION THAT IS PROPRIETARY TO MOLEX INCORPORATED AND SHOULD NOT BE USED WITHOUT WRITTEN PERMISSION

9 8 7 6 5 4 3 2 1