



Chipsmall Limited consists of a professional team with an average of over 10 year of expertise in the distribution of electronic components. Based in Hongkong, we have already established firm and mutual-benefit business relationships with customers from,Europe,America and south Asia,supplying obsolete and hard-to-find components to meet their specific needs.

With the principle of “Quality Parts,Customers Priority,Honest Operation,and Considerate Service”,our business mainly focus on the distribution of electronic components. Line cards we deal with include Microchip,ALPS,ROHM,Xilinx,Pulse,ON,Everlight and Freescale. Main products comprise IC,Modules,Potentiometer,IC Socket,Relay,Connector.Our parts cover such applications as commercial,industrial, and automotives areas.

We are looking forward to setting up business relationship with you and hope to provide you with the best service and solution. Let us make a better world for our industry!



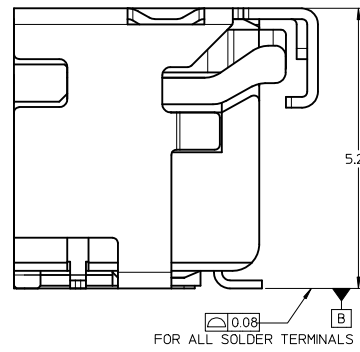
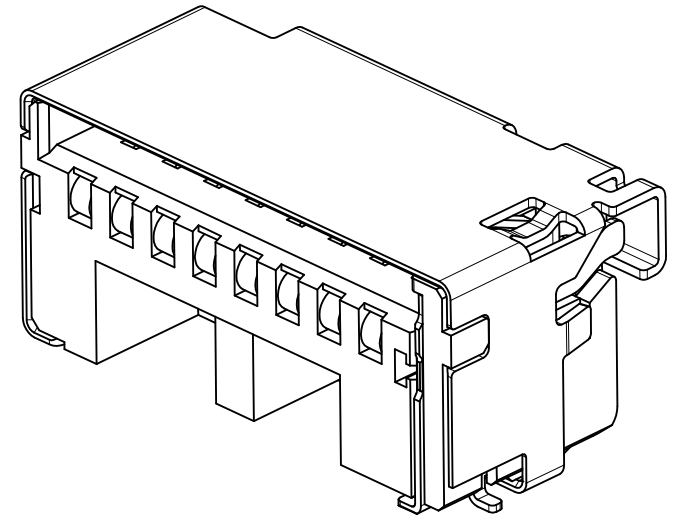
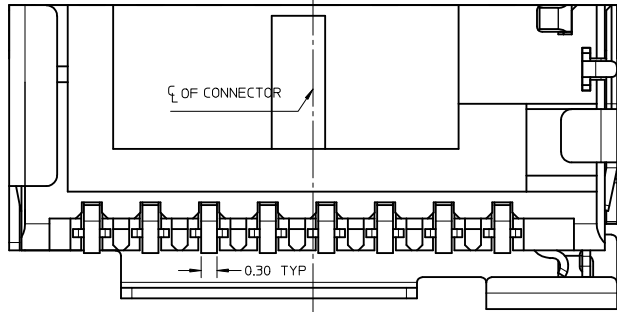
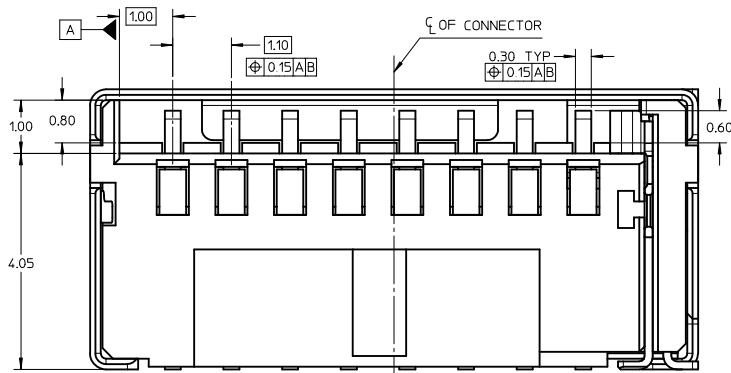
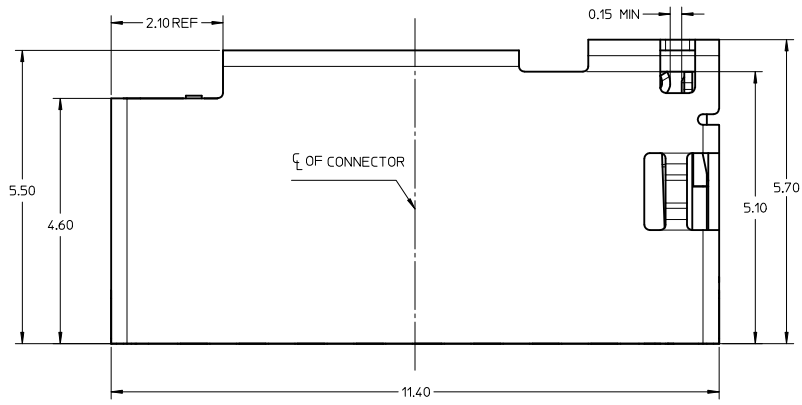
Contact us

Tel: +86-755-8981 8866 Fax: +86-755-8427 6832

Email & Skype: info@chipsmall.com Web: www.chipsmall.com

Address: A1208, Overseas Decoration Building, #122 Zhenhua RD., Futian, Shenzhen, China





NOTES:

- MATERIAL:
 - 1-1 HOUSING: LCP, 30% G/F, UL 94V-0, BLACK
 - 1-2 SIGNAL TERMINAL AND DETECT TERMINAL: PHOSPHOR BRONZE
 - 1-3 METAL SHELL: STAINLESS STEEL
- FINISH:
 - 2-1 SIGNAL TERMINAL: 125 MICRON NICKEL MIN UNDER-PLATED, CONTACT AREA SEE TABLE. GOLD FLASH ON SOLDER AREA.
 - 2-2 METAL SHELL: GOLD FLASH PLATED OVER NICKEL ON SOLDER AREA.
 - 2-3 DETECT PIN: 125 MICRON NICKEL MIN UNDER-PLATED, GOLD FLASH ON CONTACT AREA. TIN PLATED ON SOLDER AREA.
- PRODUCT SPECIFICATION: PS-47309-002.
- PACKAGE SPECIFICATION: PK-47309-525.
- PRODUCT COMPLIANT TO RoHS DIRECTIVE 2002/95/EC AND ELV 2000/53/EC.

47309-0525	0.38 MICRON MIN. GOLD	
47309-5251	0.76 MICRON MIN. GOLD	INK
47309-8251	0.1 MICRON MIN. GOLD	
47309-1525	0.76 MICRON MIN. GOLD	LASER
PART NUMBER	CONTACT AREA PLATING	DATE CODE PRINTING TYPE

ADD NEW PART EC NO: SH2012-0261 DRAWN: GLL CHKD: APPR: AYIN REV:	QUALITY SYMBOLS ▽=0 ▽=0 ▽=0	GENERAL TOLERANCES (UNLESS SPECIFIED) <table border="1"> <tr> <th></th> <th>mm</th> <th>INCH</th> </tr> <tr> <td>4 PLACES</td> <td>± 0.15</td> <td>± 0.006</td> </tr> <tr> <td>3 PLACES</td> <td>± 0.25</td> <td>± 0.010</td> </tr> <tr> <td>2 PLACES</td> <td>± 0.30</td> <td>± 0.012</td> </tr> <tr> <td>1 PLACE</td> <td>± 0.40</td> <td>± 0.016</td> </tr> </table> ANGULAR ± 1° DRAFT WHERE APPLICABLE MUST REMAIN WITHIN DIMENSIONS		mm	INCH	4 PLACES	± 0.15	± 0.006	3 PLACES	± 0.25	± 0.010	2 PLACES	± 0.30	± 0.012	1 PLACE	± 0.40	± 0.016	DIMENSION STYLE MM ONLY DRAWN BY: LLIU10 DATE: 2008/11/05 CHECKED BY: WFDENG DATE: 2009/07/19 APPROVED BY: HWWANG DATE: 2009/07/19 MATERIAL NO.	SCALE: 1:1 DESIGN UNITS: METRIC THIRD ANGLE PROJECTION	TITLE: 5.25H MICRO-SD HEADER W/DETECT PIN MOLEX INCORPORATED DOCUMENT NO. SD-47309-525	SHEET NO. 1 OF 2
		mm	INCH																		
	4 PLACES	± 0.15	± 0.006																		
	3 PLACES	± 0.25	± 0.010																		
2 PLACES	± 0.30	± 0.012																			
1 PLACE	± 0.40	± 0.016																			
SEE TABLE		THIS DRAWING CONTAINS INFORMATION THAT IS PROPRIETARY TO MOLEX INCORPORATED AND SHOULD NOT BE USED WITHOUT WRITTEN PERMISSION																			

10 9 8 7 6 5 4 3 2 1

F

E

D

C

B

A

F

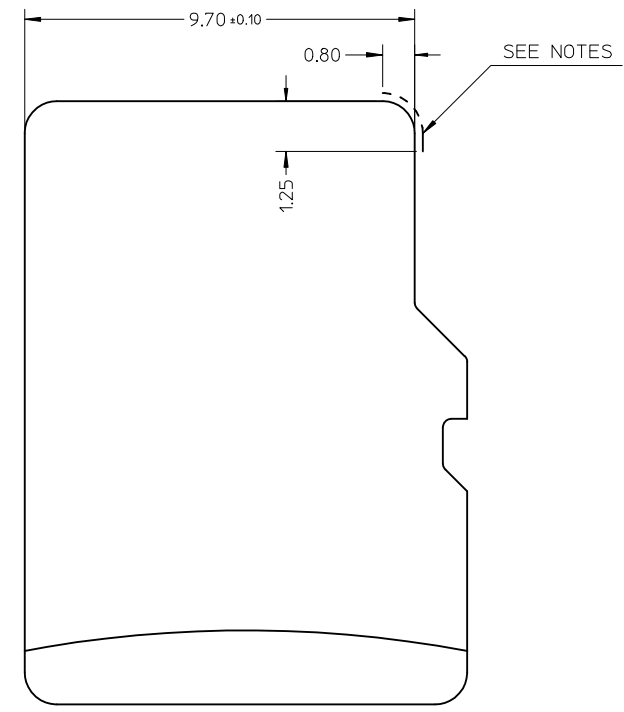
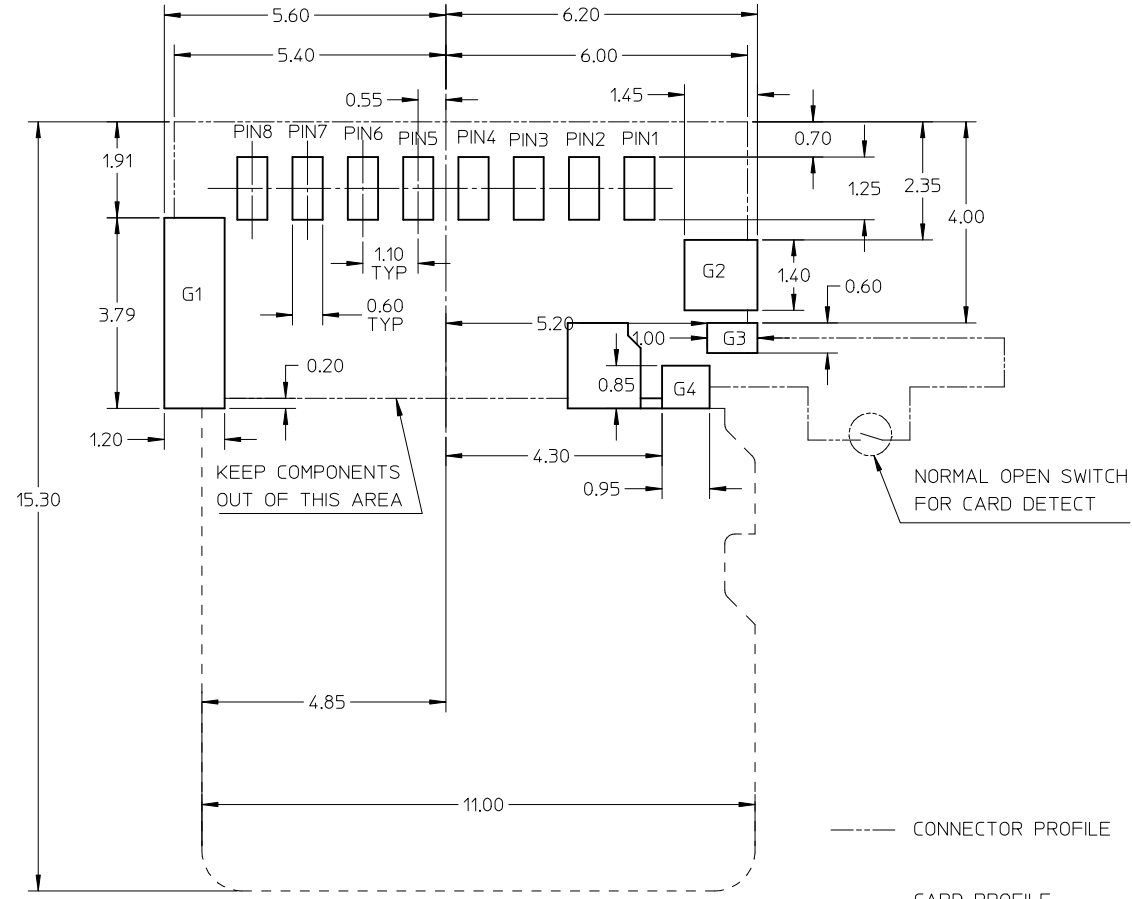
E

D

C

B

A



TFR CARD

RECOMMENDED PCB LAYOUT
TOLERANCE FOR PCB LAYOUT: ±0.05

G4	DET
G3	POL
G2	GND
G1	GND
P8	DAT1
P7	DAT0
P6	VSS
P5	CLK
P4	VDD
P3	CMD
P2	CD/DAT3
P1	DAT2
NAME	TYPE
PIN ASSIGNMENT	

--- CONNECTOR PROFILE

--- CARD PROFILE

NOTES:

NO CONDUCTIVE EXPOSURE TRACE IS ALLOWED ON THE SIDE FACE OF THE CARD AT THIS AREA.

SEE SHEET 1 EC NO: SH2012-0261 DRW:GLL 2012/02/10 CHKD: APPR:AYIN 2012/02/23	DESCRIPTION REV	QUALITY SYMBOLS	GENERAL TOLERANCES (UNLESS SPECIFIED)	DIMENSION STYLE	SCALE	DESIGN UNITS	THIRD ANGLE PROJECTION	
		$F_A=0$ $F_G=0$ $F_P=0$	mm INCH 4 PLACES ± --- ± --- 3 PLACES ± --- ± --- 2 PLACES ± 0.15 ± --- 1 PLACE ± 0.25 ± --- ANGULAR ± 1 °	MM ONLY	1:1	METRIC		
			DRAFT WHERE APPLICABLE MUST REMAIN WITHIN DIMENSIONS	DRAWN BY DATE LLIU10 2008/11/05 CHECKED BY DATE WFDENG 2009/07/19 APPROVED BY DATE HWWANG 2009/07/19	TITLE	5.25H MICRO-SD HEADER W/DETECT PIN		
			SIZE A3	MATERIAL NO. SEE SHEET 1 THIS DRAWING CONTAINS INFORMATION THAT IS PROPRIETARY TO MOLEX INCORPORATED AND SHOULD NOT BE USED WITHOUT WRITTEN PERMISSION	MOLEX INCORPORATED DOCUMENT NO. SD-47309-525 SHEET NO. 2 OF 2			

9 8 7 6 5 4 3 2 1