



Chipsmall Limited consists of a professional team with an average of over 10 year of expertise in the distribution of electronic components. Based in Hongkong, we have already established firm and mutual-benefit business relationships with customers from,Europe,America and south Asia,supplying obsolete and hard-to-find components to meet their specific needs.

With the principle of "Quality Parts,Customers Priority,Honest Operation,and Considerate Service",our business mainly focus on the distribution of electronic components. Line cards we deal with include Microchip,ALPS,ROHM,Xilinx,Pulse,ON,Everlight and Freescale. Main products comprise IC,Modules,Potentiometer,IC Socket,Relay,Connector.Our parts cover such applications as commercial,industrial, and automotives areas.

We are looking forward to setting up business relationship with you and hope to provide you with the best service and solution. Let us make a better world for our industry!



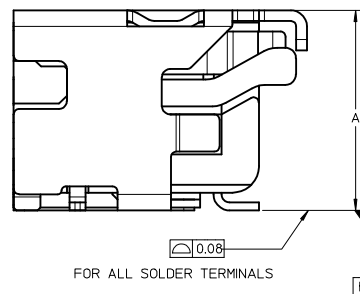
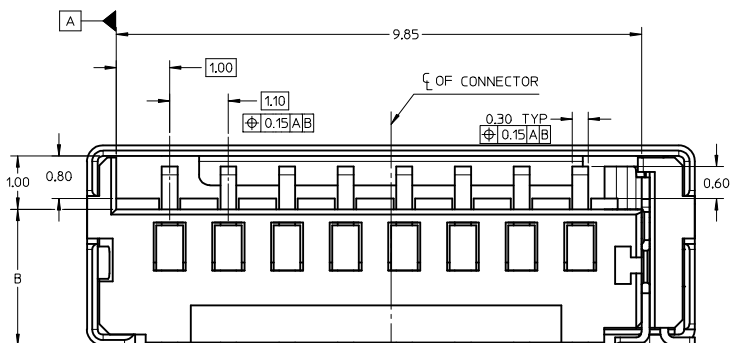
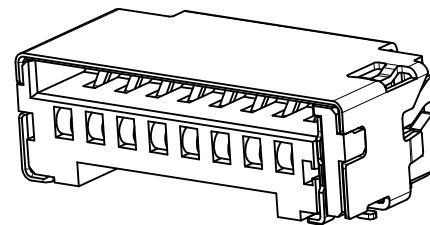
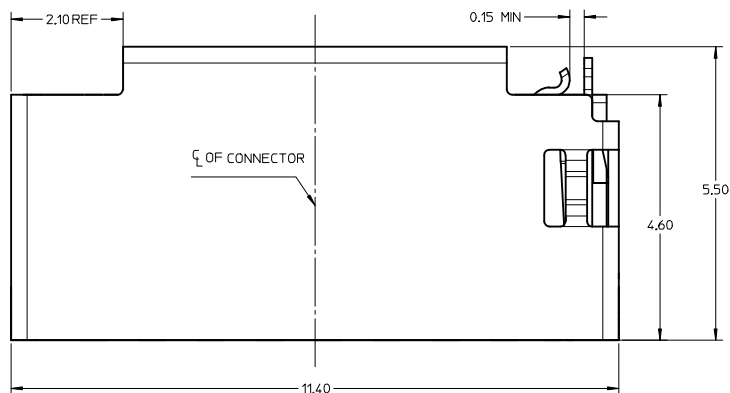
Contact us

Tel: +86-755-8981 8866 Fax: +86-755-8427 6832

Email & Skype: info@chipsmall.com Web: www.chipsmall.com

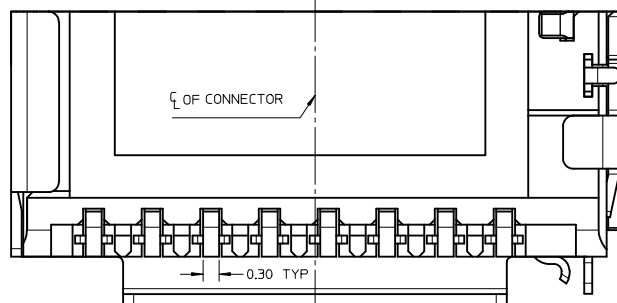
Address: A1208, Overseas Decoration Building, #122 Zhenhua RD., Futian, Shenzhen, China





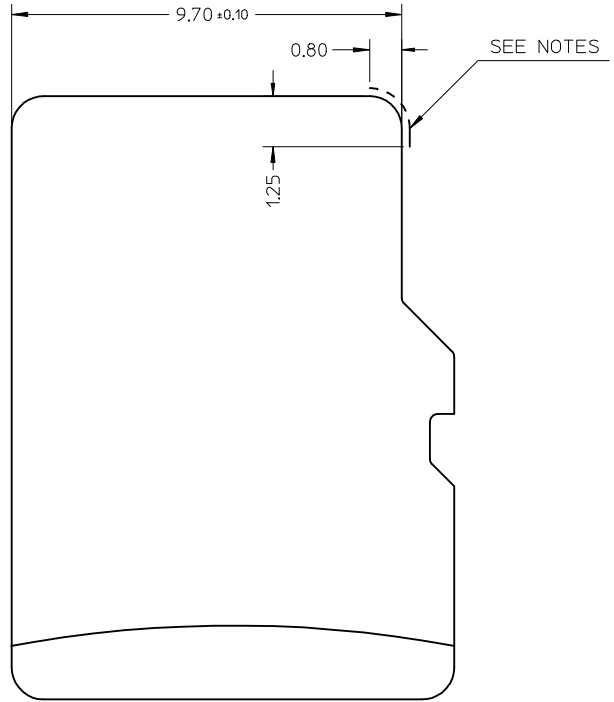
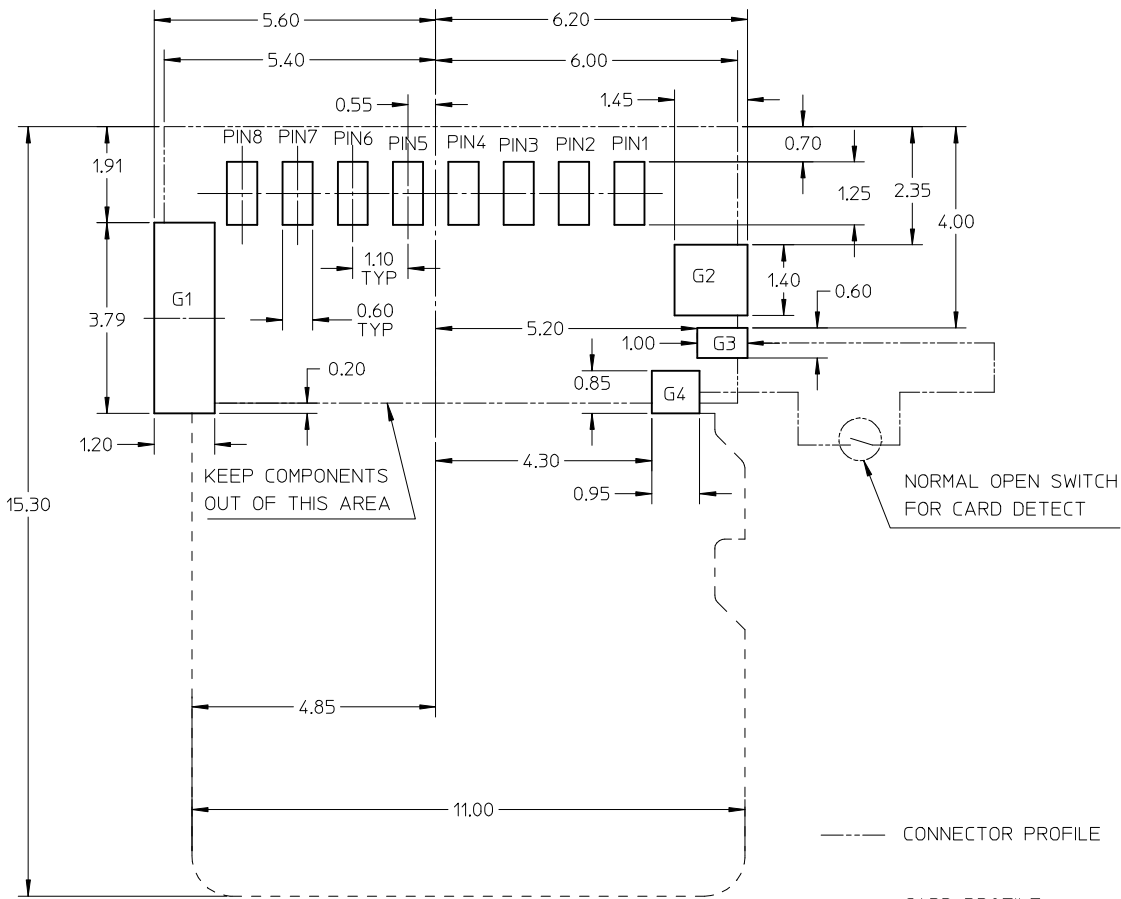
NOTES:

- MATERIAL:
 - 1-1 HOUSING: LCP, 30% G/F, UL 94V-0, BLACK
 - 1-2 SIGNAL TERMINAL AND DETECT TERMINAL: PHOSPHOR BRONZE
 - 1-3 METAL SHELL: STAINLESS STEEL
- FINISH:
 - 2-1 SIGNAL TERMINAL: 125 MICRON NICKEL MIN UNDER-PLATED, CONTACT AREA SEE TABLE, GOLD FLASH ON SOLDER AREA.
 - 2-2 METAL SHELL: GOLD FLASH PLATED OVER NICKEL ON SOLDER AREA.
 - 2-3 DETECT PIN: 125 MICRON NICKEL MIN UNDER-PLATED, GOLD FLASH ON CONTACT AREA, TIN PLATED ON SOLDER AREA.
- PRODUCT SPECIFICATION: PS-47309-001.
- PACKAGE SPECIFICATION: SEE TABLE.
- PRODUCT COMPLIANT TO RoHS DIRECTIVE 2002/95/EC AND ELV 2000/53/EC.



PART NUMBER	DIM A	DIM B	CONTACT AREA PLATING	PACKAGE SPECIFICATION
47309-0375	3.75	2.55	0.38 MICRON MIN. GOLD	PK-47309-375
47309-3751			0.76 MICRON MIN. GOLD	
47309-8751			0.1 MICRON MIN. GOLD	
47309-0355	3.55	2.35	0.38 MICRON MIN. GOLD	PK-47309-335
47309-3551			0.76 MICRON MIN. GOLD	
47309-8551			0.1 MICRON MIN. GOLD	
47309-0335	3.35	2.15	0.38 MICRON MIN. GOLD	PK-47309-265
47309-3351			0.76 MICRON MIN. GOLD	
47309-8351			0.1 MICRON MIN. GOLD	
47309-0285	2.85	1.65	0.38 MICRON MIN. GOLD	PK-47309-265
47309-2851			0.76 MICRON MIN. GOLD	
47309-8851			0.1 MICRON MIN. GOLD	
47309-0265	2.65	1.45	0.38 MICRON MIN. GOLD	PK-47309-265
47309-2651			0.76 MICRON MIN. GOLD	
47309-8651			0.1 MICRON MIN. GOLD	

ADD NEW PART EC NO: SH2012-0261 DRAWN: GLLI CHKD: AYIN APPR: AYIN 2012/02/10 2012/02/23	QUALITY SYMBOLS ▽=0 ▽=0 ▽=0	GENERAL TOLERANCES (UNLESS SPECIFIED)		DIMENSION STYLE MM ONLY		SCALE 1:1		DESIGN UNITS METRIC		TITLE TFR HEADER WITH DETECT PIN
		4 PLACES ± --- ± --- 3 PLACES ± --- ± --- 2 PLACES ± 0.15 ± --- 1 PLACE ± 0.25 ± ---		DRAWN BY GLLI DATE 2012/02/10		CHECKED BY XO ZHANG DATE 2012/02/10		APPROVED BY AYIN DATE 2012/02/23		
		ANGULAR ± 3 °		MATERIAL NO. SEE TABLE		DOCUMENT NO. SD-47309-001		SHEET NO. 1 OF 2		
		DRAFT WHERE APPLICABLE MUST REMAIN WITHIN DIMENSIONS		THIS DRAWING CONTAINS INFORMATION THAT IS PROPRIETARY TO MOLEX INCORPORATED AND SHOULD NOT BE USED WITHOUT WRITTEN PERMISSION						



TFR CARD

--- CONNECTOR PROFILE
 - - - CARD PROFILE

RECOMMENDED PCB LAYOUT
 TOLERANCE FOR PCB LAYOUT : ±0.05

NOTES:
 NO CONDUCTIVE EXPOSURE TRACE IS ALLOWED ON THE SIDE FACE OF THE CARD AT THIS AREA.

G4	DET
G3	POL
G2	GND
G1	GND
P8	DAT1
P7	DAT0
P6	VSS
P5	CLK
P4	VDD
P3	CMD
P2	CD/DAT3
P1	DAT2
NAME	TYPE
PIN ASSIGNMENT	

SEE SHEET 1 EC NO: SH2012-0261 DRAWING: GLL1 2012/02/10 CHKD: APPR: AYIN 2012/02/23 REV:	QUALITY SYMBOLS $F_A=0$ $F_C=0$ $F_P=0$	GENERAL TOLERANCES (UNLESS SPECIFIED) mm INCH 4 PLACES ± --- ± --- 3 PLACES ± --- ± --- 2 PLACES ± 0.15 ± --- 1 PLACE ± 0.25 ± --- ANGULAR ± 3 °	DIMENSION STYLE MM ONLY DRAWN BY: GLL1 DATE: 2012/02/10 CHECKED BY: XQ ZHANG DATE: 2012/02/10 APPROVED BY: AYIN DATE: 2012/02/23	SCALE 1:1 DESIGN UNITS METRIC THIRD ANGLE PROJECTION	TITLE TFR HEADER WITH DETECT PIN	
	DRAFT WHERE APPLICABLE MUST REMAIN WITHIN DIMENSIONS		MATERIAL NO. SEE SHEET 1	MOLEX INCORPORATED DOCUMENT NO. SD-47309-001		
			SIZE A3	THIS DRAWING CONTAINS INFORMATION THAT IS PROPRIETARY TO MOLEX INCORPORATED AND SHOULD NOT BE USED WITHOUT WRITTEN PERMISSION		
				SHEET NO. 2 OF 2		