



Chipsmall Limited consists of a professional team with an average of over 10 year of expertise in the distribution of electronic components. Based in Hongkong, we have already established firm and mutual-benefit business relationships with customers from,Europe,America and south Asia,supplying obsolete and hard-to-find components to meet their specific needs.

With the principle of “Quality Parts,Customers Priority,Honest Operation,and Considerate Service”,our business mainly focus on the distribution of electronic components. Line cards we deal with include Microchip,ALPS,ROHM,Xilinx,Pulse,ON,Everlight and Freescale. Main products comprise IC,Modules,Potentiometer,IC Socket,Relay,Connector.Our parts cover such applications as commercial,industrial, and automotives areas.

We are looking forward to setting up business relationship with you and hope to provide you with the best service and solution. Let us make a better world for our industry!



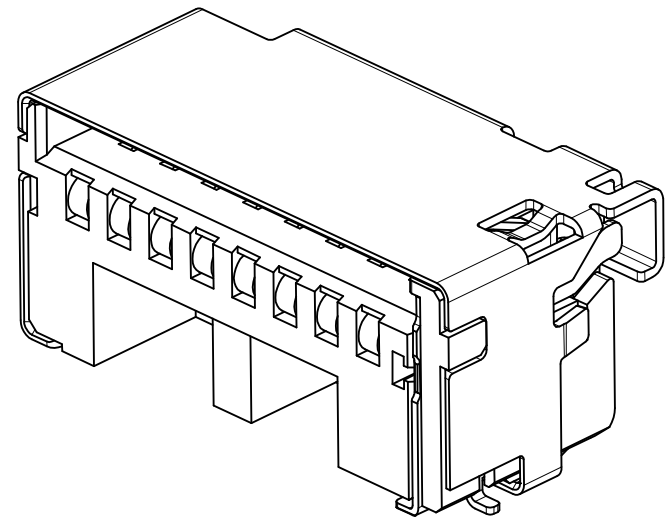
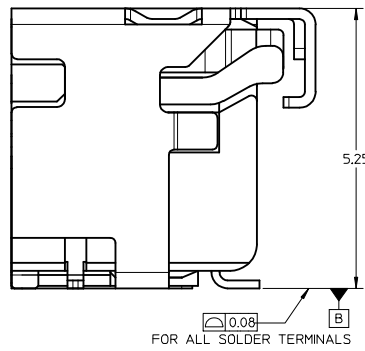
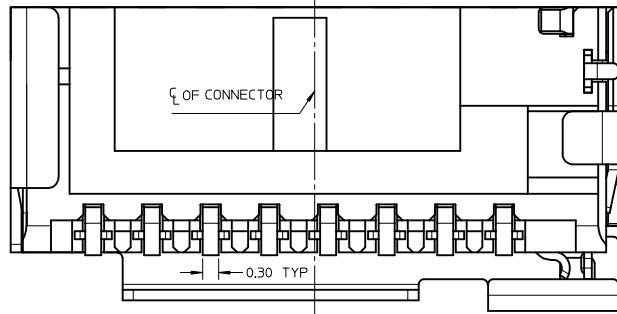
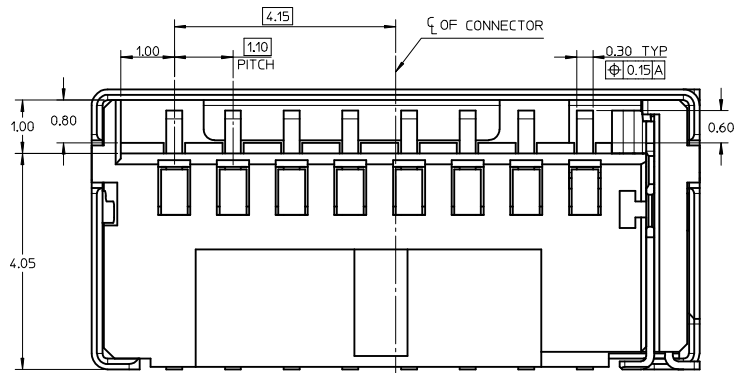
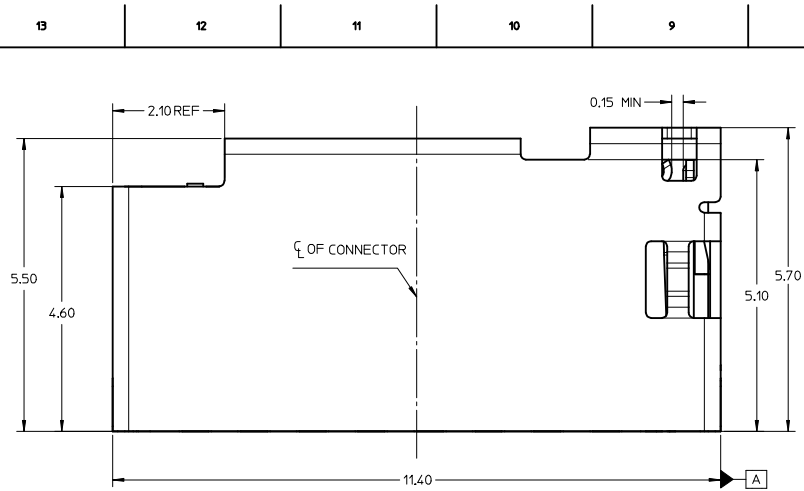
Contact us

Tel: +86-755-8981 8866 Fax: +86-755-8427 6832

Email & Skype: info@chipsmall.com Web: www.chipsmall.com

Address: A1208, Overseas Decoration Building, #122 Zhenhua RD., Futian, Shenzhen, China

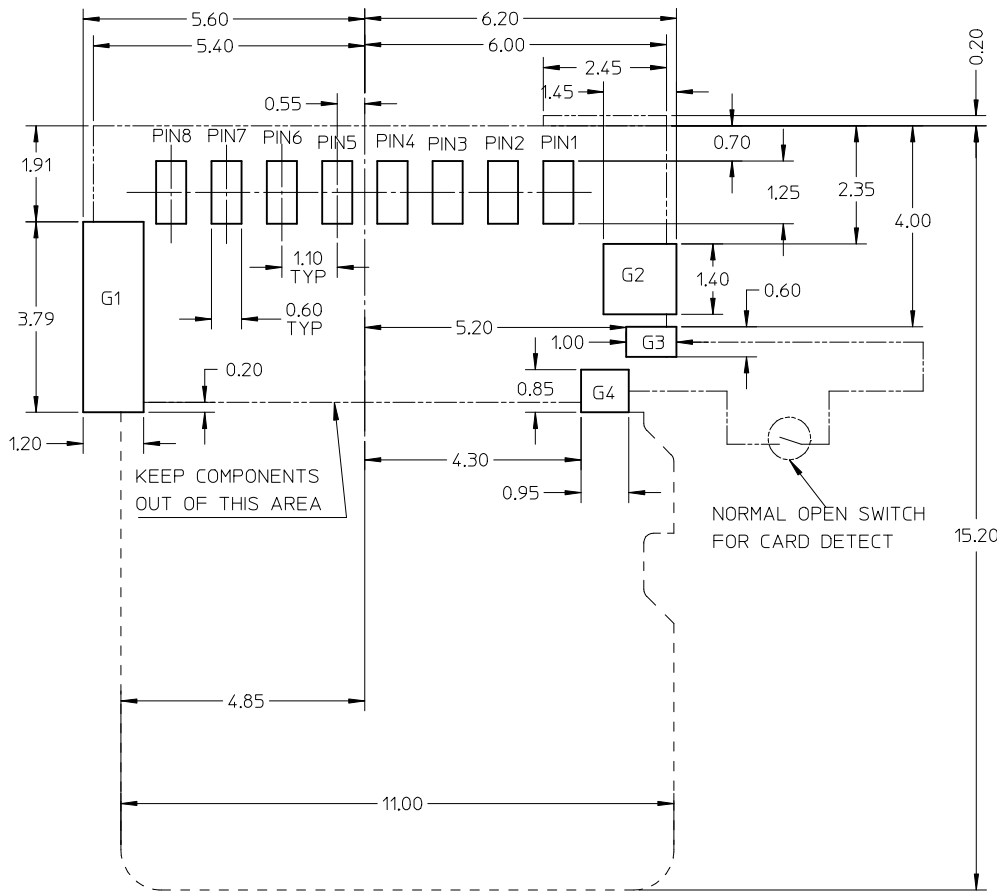




- NOTES:
- MATERIAL:
 - 1-1 HOUSING: LCP, 30% G/F, UL 94V-0, BLACK
 - 1-2 SIGNAL TERMINAL AND DETECT TERMINAL: PHOSPHOR BRONZE
 - 1-3 METAL SHELL: STAINLESS STEEL
 - FINISH:
 - 2-1 SIGNAL TERMINAL: 1.25 MICRON NICKEL MIN UNDER-PLATED, CONTACT AREA SEE TABLE, GOLD FLASH ON SOLDER AREA.
 - 2-2 METAL SHELL: GOLD FLASH PLATED OVER NICKEL ON SOLDER AREA.
 - 2-3 DETECT PIN: 1.25 MICRON NICKEL MIN UNDER-PLATED, GOLD FLASH ON CONTACT AREA, TIN PLATED ON SOLDER AREA.
 - PRODUCT SPECIFICATION: PS-47309-002.
 - PACKAGE SPECIFICATION: SEE TABLE.
 - PRODUCT COMPLIANT TO RoHS DIRECTIVE 2002/95/EC AND ELV 2000/53/EC.

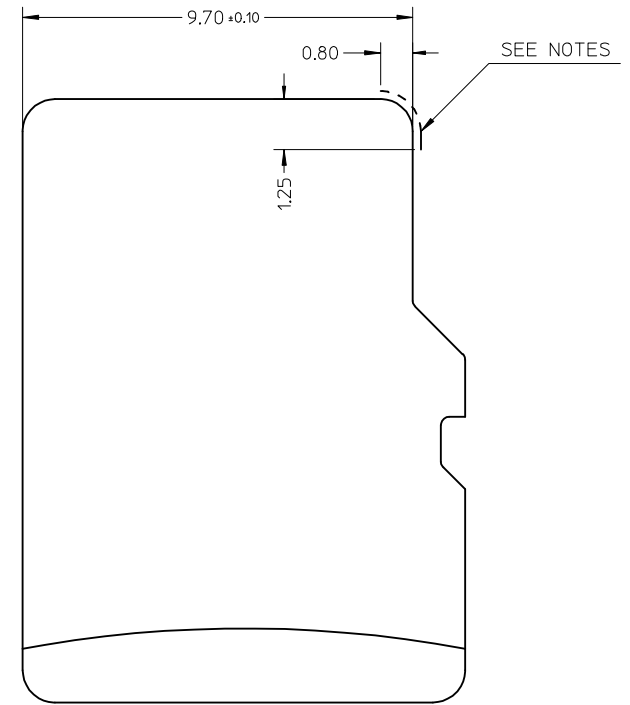
47309-2525	0.38 MICRON MIN. GOLD	INK	PK-47309-500
47309-0525	0.38 MICRON MIN. GOLD		PK-47309-525
47309-5251	0.76 MICRON MIN. GOLD		
47309-8251	0.1 MICRON MIN. GOLD	LASER	
47309-1525	0.76 MICRON MIN. GOLD		
PART NUMBER	CONTACT AREA PLATING	DATE CODE PRINTING TYPE	PACKAGING SPECIFICATION

SEE SHEET 2 IEC NO: SHZ015-0027 DRAWN:AWANG17 2014/07/15 CHKD:XOZHANG 2014/07/15 APPR:AYIN 2014/07/25	QUALITY SYMBOLS ▽=0 ▽=0 ▽=0	GENERAL TOLERANCES (UNLESS SPECIFIED)		DIMENSION STYLE MM ONLY		SCALE 1:1	DESIGN UNITS METRIC	THIRD ANGLE PROJECTION	
			mm	INCH	DRAWN BY LLIU10	DATE 2008/11/05	TITLE 5.25H MICRO-SD HEADER W/DETECT PIN		
		4 PLACES	± ---	± ---	CHECKED BY WFDENG	DATE 2009/07/19			
		3 PLACES	± ---	± ---	APPROVED BY HWANG	DATE 2009/07/19			
			ANGULAR ± 1 °		MATERIAL NO.	DOCUMENT NO.			
			DRAFT WHERE APPLICABLE MUST REMAIN WITHIN DIMENSIONS		SEE TABLE	SD-47309-525		SHEET NO. 1 OF 2	
			THIS DRAWING CONTAINS INFORMATION THAT IS PROPRIETARY TO MOLEX INCORPORATED AND SHOULD NOT BE USED WITHOUT WRITTEN PERMISSION						



RECOMMENDED PCB LAYOUT
TOLERANCE FOR PCB LAYOUT: ± 0.05

----- CONNECTOR PROFILE
..... CARD PROFILE



TFR CARD

NOTES:

NO CONDUCTIVE EXPOSURE TRACE IS ALLOWED ON THE SIDE FACE OF THE CARD AT THIS AREA.

G4	DET
G3	POL
G2	GND
G1	GND
P8	DAT1
P7	DAT0
P6	VSS
P5	CLK
P4	VDD
P3	CMD
P2	CD/DAT3
P1	DAT2
NAME	TYPE
PIN ASSIGNMENT	

UPDATE PCB LAYOUT	
EC NO: SH2015-0027	2014/07/15
DRWN:AWANG17	2014/07/15
CHKD:XOZHANG	2014/07/15
APPR:AYIN	2014/07/15
REV	DESCRIPTION
I	

QUALITY SYMBOLS
$\nabla_A = 0$
$\nabla_C = 0$
$\nabla_B = 0$

GENERAL TOLERANCES (UNLESS SPECIFIED)		
	mm	
	INCH	
4 PLACES	\pm ---	\pm ---
3 PLACES	\pm ---	\pm ---
2 PLACES	± 0.15	\pm ---
1 PLACE	± 0.25	\pm ---
0 PLACE	\pm ---	\pm ---
ANGULAR $\pm 1^\circ$		
DRAFT WHERE APPLICABLE MUST REMAIN WITHIN DIMENSIONS		

DIMENSION STYLE	
MM ONLY	
DRAWN BY	DATE
LLIU10	2008/11/05
CHECKED BY	DATE
WFDENG	2009/07/19
APPROVED BY	DATE
HWWANG	2009/07/19
MATERIAL NO.	
SEE SHEET 1	
SIZE	
A3	

SCALE	DESIGN UNITS	THIRD ANGLE PROJECTION
1:1	METRIC	
TITLE		
5.25H MICRO-SD HEADER W/DETECT PIN		
molex		
MATERIAL NO.	DOCUMENT NO.	SHEET NO.
	SD-47309-525	2 OF 2
THIS DRAWING CONTAINS INFORMATION THAT IS PROPRIETARY TO MOLEX INCORPORATED AND SHOULD NOT BE USED WITHOUT WRITTEN PERMISSION		