



Chipsmall Limited consists of a professional team with an average of over 10 year of expertise in the distribution of electronic components. Based in Hongkong, we have already established firm and mutual-benefit business relationships with customers from,Europe,America and south Asia,supplying obsolete and hard-to-find components to meet their specific needs.

With the principle of “Quality Parts,Customers Priority,Honest Operation,and Considerate Service”,our business mainly focus on the distribution of electronic components. Line cards we deal with include Microchip,ALPS,ROHM,Xilinx,Pulse,ON,Everlight and Freescale. Main products comprise IC,Modules,Potentiometer,IC Socket,Relay,Connector.Our parts cover such applications as commercial,industrial, and automotives areas.

We are looking forward to setting up business relationship with you and hope to provide you with the best service and solution. Let us make a better world for our industry!



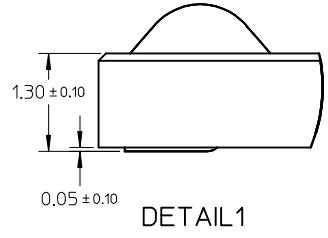
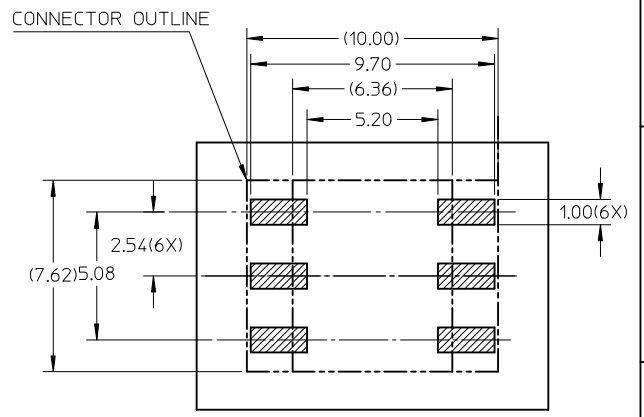
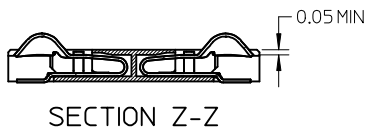
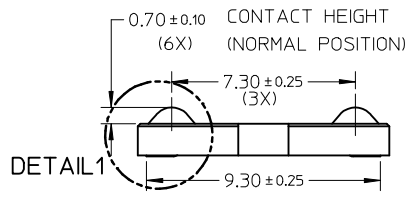
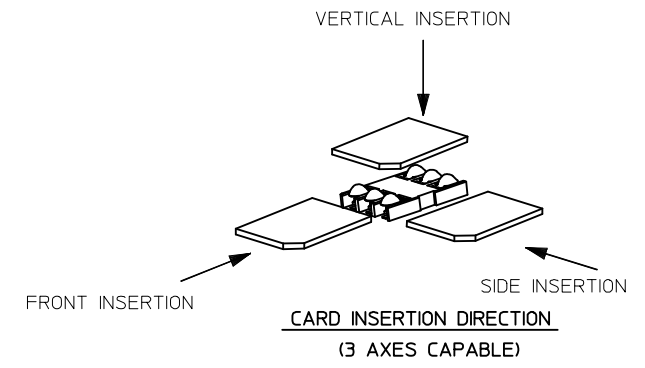
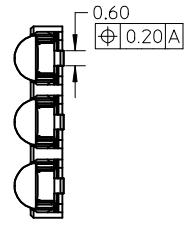
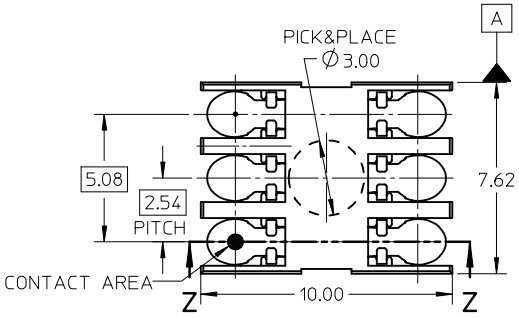
Contact us

Tel: +86-755-8981 8866 Fax: +86-755-8427 6832

Email & Skype: info@chipsmall.com Web: www.chipsmall.com

Address: A1208, Overseas Decoration Building, #122 Zhenhua RD., Futian, Shenzhen, China





RECOMMENDED PCB LAYOUT
(TOLERANCE ±0.05)

NOTES:

- 1.MATERIAL
HOUSING:LCP 30% GLASS FILLED,UL94 V-0,BLACK
TERMINAL:PHOSPHOR BRONZE 0.12MM THICKNESS
- 2.PLATING
CONTACT AREA--0.5 MICROMETER MIN GOLD
SOLDER TAIL--GOLD FLASH
UNDERPLATING--2 MICROMETER NICKEL OVERALL
- 3.PRODUCT COMPLIANT TO ROHS DIRECTIVE 2002/95/EC
AND ELV DIRECTIVE 2000/53/EC

NEW RELEASE	EC NO: 2008/10/16	DRWN:YPMU CHKD:YLZHU02	APPR:	DESCRIPTION	QUALITY SYMBOLS	GENERAL TOLERANCES (UNLESS SPECIFIED)		DIMENSION STYLE	SCALE	DESIGN UNITS	THIRD ANGLE PROJECTION
					▽=0 ▽=0	mm	INCH	MM ONLY	5:1	METRIC	
						4 PLACES ± --- ± ---	DRAWN BY	DATE	TITLE		
						3 PLACES ± --- ± ---	LHSHEN	2006/10/10	1.3 HEIGHT BLOCK SIM CONNECTOR SALES DRAWING		
	2 PLACES ± 0.10 ± ---	CHECKED BY	DATE								
	1 PLACE ± 0.20 ± ---	XUXIANG	2006/10/15	MOLEX INCORPORATED							
	ANGULAR ± 2°	APPROVED BY	DATE								
		JENNY	2006/10/15	MATERIAL NO. 473121001 DOCUMENT NO. SD-47312-101 SHEET NO. 1 OF 1							
		DRAFT WHERE APPLICABLE MUST REMAIN WITHIN DIMENSIONS									
				THIS DRAWING CONTAINS INFORMATION THAT IS PROPRIETARY TO MOLEX INCORPORATED AND SHOULD NOT BE USED WITHOUT WRITTEN PERMISSION							