



Chipsmall Limited consists of a professional team with an average of over 10 year of expertise in the distribution of electronic components. Based in Hongkong, we have already established firm and mutual-benefit business relationships with customers from,Europe,America and south Asia,supplying obsolete and hard-to-find components to meet their specific needs.

With the principle of “Quality Parts,Customers Priority,Honest Operation,and Considerate Service”,our business mainly focus on the distribution of electronic components. Line cards we deal with include Microchip,ALPS,ROHM,Xilinx,Pulse,ON,Everlight and Freescale. Main products comprise IC,Modules,Potentiometer,IC Socket,Relay,Connector.Our parts cover such applications as commercial,industrial, and automotives areas.

We are looking forward to setting up business relationship with you and hope to provide you with the best service and solution. Let us make a better world for our industry!



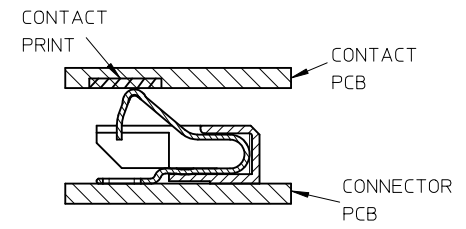
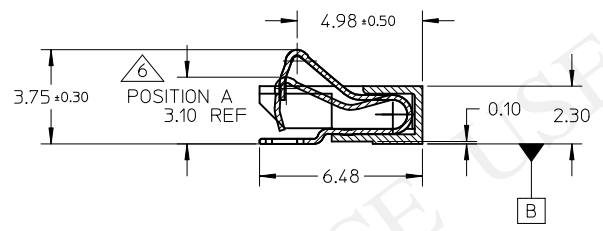
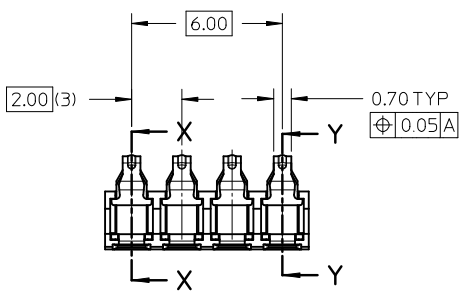
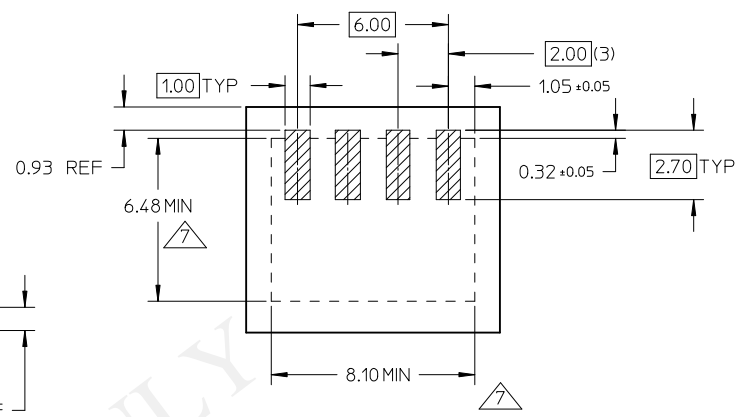
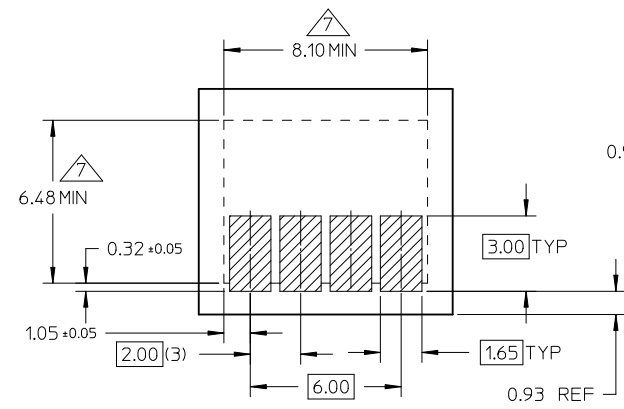
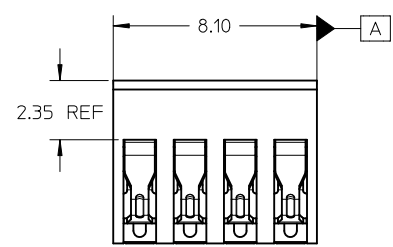
Contact us

Tel: +86-755-8981 8866 Fax: +86-755-8427 6832

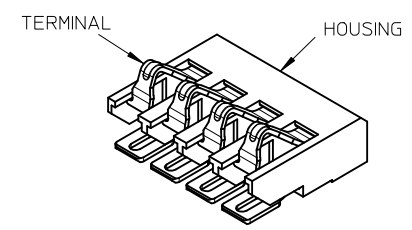
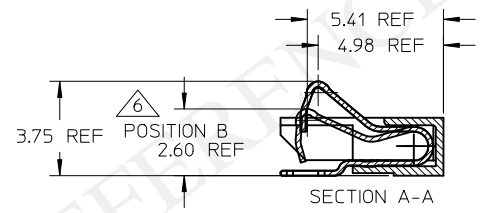
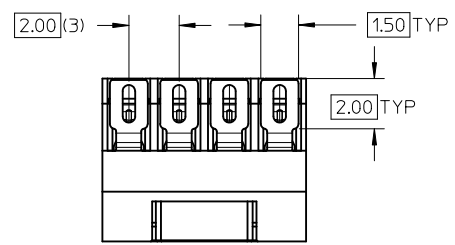
Email & Skype: info@chipsmall.com Web: www.chipsmall.com

Address: A1208, Overseas Decoration Building, #122 Zhenhua RD., Futian, Shenzhen, China





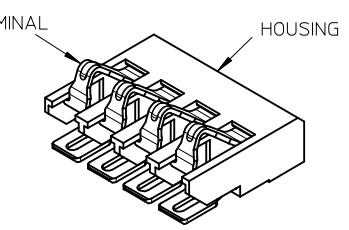
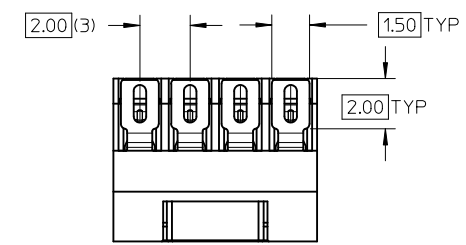
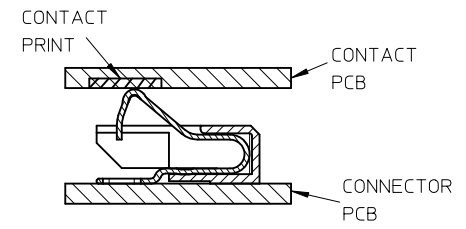
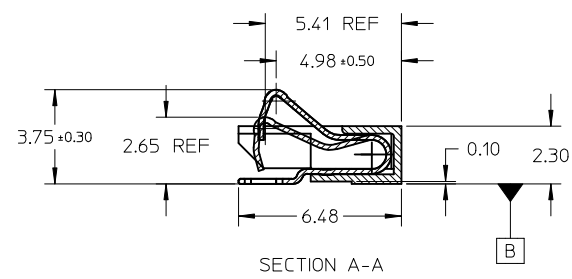
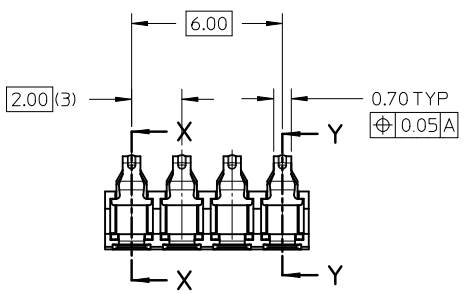
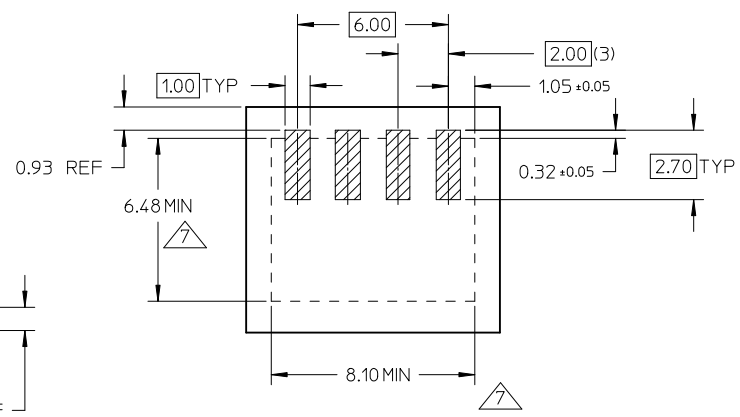
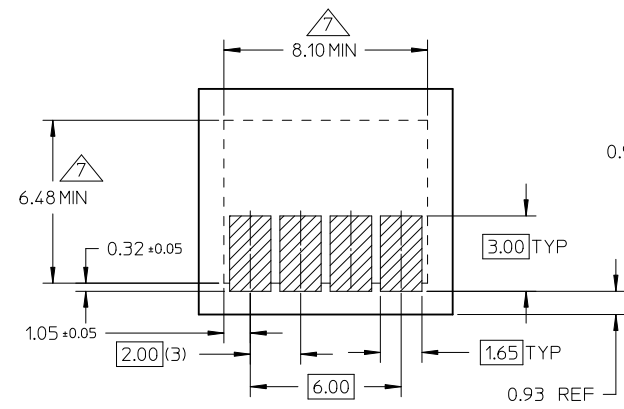
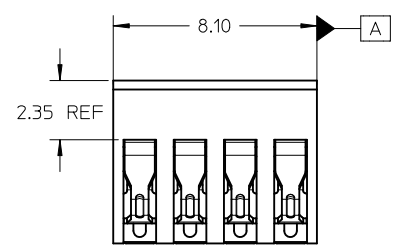
SECTION X-X



NOTE:
 1.MATERIAL:
 HOUSING: LCP, 30% GLASS-FILLED, UL 94V-0, COLOR :BLACK
 TERMINAL: 0.20MM PHOSPHOR BRONZE.
 2.FINISH:
 CONTACT AREA: 0.75 MICRON GOLD MIN OVER 1.25 MICRON NICKEL MIN.
 SOLDER AREA: 3.75 MICRON PURE TIN MIN OVER 1.25 MICRON NICKEL
 MIN.REST AREA: 1.25 MICRON NICKEL MIN.
 3.COPLANARITY: 0.1 MAX AMONG THESE SOLDER TAILS.
 4.PRODUCT SPECIFICATION REFER TO PS-47103-001
 5.PACKAGE REFER TO PK-47103-001
 △ CONTACT NORMAL FORCE RANGE BETWEEN 50gm MIN TO 200gm MAX
 WITHIN SPECIFIED WORKING POSITION A & B.
 △ CONNECTOR KEEP-OUT ZONE

REVISED NOTE 6 EC NO: S2012-0715 DRWN:SHONG CHKD: APPR:SHONG 2	DESCRIPTION 2012/03/27 2012/03/28	QUALITY SYMBOLS ▽=0 ∇=0	GENERAL TOLERANCES (UNLESS SPECIFIED)	DIMENSION STYLE MM ONLY	SCALE 5:1	DESIGN UNITS METRIC	THIRD ANGLE PROJECTION																															
		<table border="1"> <tr> <th></th> <th>mm</th> <th>INCH</th> </tr> <tr> <td>4 PLACES</td> <td>± ---</td> <td>± ---</td> </tr> <tr> <td>3 PLACES</td> <td>± ---</td> <td>± ---</td> </tr> <tr> <td>2 PLACES</td> <td>± 0.15</td> <td>± ---</td> </tr> <tr> <td>1 PLACE</td> <td>± 0.20</td> <td>± ---</td> </tr> </table>		mm	INCH	4 PLACES	± ---	± ---	3 PLACES	± ---	± ---	2 PLACES	± 0.15	± ---	1 PLACE	± 0.20	± ---	<table border="1"> <tr> <th>DRAWN BY</th> <th>DATE</th> <th>TITLE</th> </tr> <tr> <td>SSUN</td> <td>2005/09/12</td> <td rowspan="2">2.0MM PITCH 4 CIRCUITS BATTERY CONNECTOR</td> </tr> <tr> <th>CHECKED BY</th> <th>DATE</th> </tr> <tr> <td>Y JWU</td> <td>2005/09/12</td> <td rowspan="2">MOLEX INCORPORATED</td> </tr> <tr> <th>APPROVED BY</th> <th>DATE</th> </tr> <tr> <td>GARY CHEN</td> <td>2005/09/12</td> <td>DOCUMENT NO. RSD-47327-001</td> </tr> <tr> <td>MATERIAL NO. 473270001</td> <td colspan="2">SHEET NO. 1 OF 1</td> </tr> </table>	DRAWN BY	DATE	TITLE	SSUN	2005/09/12	2.0MM PITCH 4 CIRCUITS BATTERY CONNECTOR	CHECKED BY	DATE	Y JWU	2005/09/12	MOLEX INCORPORATED	APPROVED BY	DATE	GARY CHEN	2005/09/12	DOCUMENT NO. RSD-47327-001	MATERIAL NO. 473270001	SHEET NO. 1 OF 1		THIS DRAWING CONTAINS INFORMATION THAT IS PROPRIETARY TO MOLEX INCORPORATED AND SHOULD NOT BE USED WITHOUT WRITTEN PERMISSION
	mm	INCH																																				
4 PLACES	± ---	± ---																																				
3 PLACES	± ---	± ---																																				
2 PLACES	± 0.15	± ---																																				
1 PLACE	± 0.20	± ---																																				
DRAWN BY	DATE	TITLE																																				
SSUN	2005/09/12	2.0MM PITCH 4 CIRCUITS BATTERY CONNECTOR																																				
CHECKED BY	DATE																																					
Y JWU	2005/09/12	MOLEX INCORPORATED																																				
APPROVED BY	DATE																																					
GARY CHEN	2005/09/12	DOCUMENT NO. RSD-47327-001																																				
MATERIAL NO. 473270001	SHEET NO. 1 OF 1																																					

10 9 8 7 6 5 4 3 2 1



NOTE:
 1.MATERIAL:
 HOUSING: LCP, 30% GLASS-FILLED, UL 94V-0, COLOR :BLACK
 TERMINAL: 0.20MM PHOSPHOR BRONZE.

2.FINISH:
 CONTACT AREA: 0.75 MICRON GOLD MIN OVER 1.25 MICRON NICKEL MIN.
 SOLDER AREA: 3.75 MICRON PURE TIN MIN OVER 1.25 MICRON NICKEL
 MIN.REST AREA: 1.25 MICRON NICKEL MIN.
 3.COPLANARITY: 0.1 MAX AMONG THESE SOLDER TAILS.
 4.PRODUCT SPECIFICATION REFER TO PS-47103-001
 5.PACKAGE REFER TO PK-47103-001
 6.WORKING HEIGHT : 2.65MM REFERENCE
 7.CONNECTOR KEEP-OUT ZONE

DRAWING UPDATE EC NO: S2012-0173 DRW: LK CHEW CHKD: LING APPR: SHONG	2011/09/16	2011/10/27	2011/10/27
	DESCRIPTION		

QUALITY SYMBOLS	▽=0
	∇=0

GENERAL TOLERANCES (UNLESS SPECIFIED)	mm	INCH	
	4 PLACES	± ---	± ---
	3 PLACES	± ---	± ---
	2 PLACES	± 0.15	± ---
	1 PLACE	± 0.20	± ---
ANGULAR ± 2 °			
DRAFT WHERE APPLICABLE MUST REMAIN WITHIN DIMENSIONS			

DIMENSION STYLE MM ONLY	
DRAWN BY SSUN	DATE 2005/09/12
CHECKED BY YJWU	DATE 2005/09/12
APPROVED BY GARY CHEN	DATE 2005/09/12
MATERIAL NO. 473270001	

SCALE 5:1	DESIGN UNITS METRIC	THIRD ANGLE PROJECTION
TITLE 2.0MM PITCH 4 CIRCUITS BATTERY CONNECTOR		
MOLEX INCORPORATED		SHEET NO. 1 OF 1
DOCUMENT NO. SD-47327-001		
THIS DRAWING CONTAINS INFORMATION THAT IS PROPRIETARY TO MOLEX INCORPORATED AND SHOULD NOT BE USED WITHOUT WRITTEN PERMISSION		

9 8 7 6 5 4 3 2 1