



Chipsmall Limited consists of a professional team with an average of over 10 year of expertise in the distribution of electronic components. Based in Hongkong, we have already established firm and mutual-benefit business relationships with customers from,Europe,America and south Asia,supplying obsolete and hard-to-find components to meet their specific needs.

With the principle of "Quality Parts,Customers Priority,Honest Operation,and Considerate Service",our business mainly focus on the distribution of electronic components. Line cards we deal with include Microchip,ALPS,ROHM,Xilinx,Pulse,ON,Everlight and Freescale. Main products comprise IC,Modules,Potentiometer,IC Socket,Relay,Connector.Our parts cover such applications as commercial,industrial, and automotives areas.

We are looking forward to setting up business relationship with you and hope to provide you with the best service and solution. Let us make a better world for our industry!



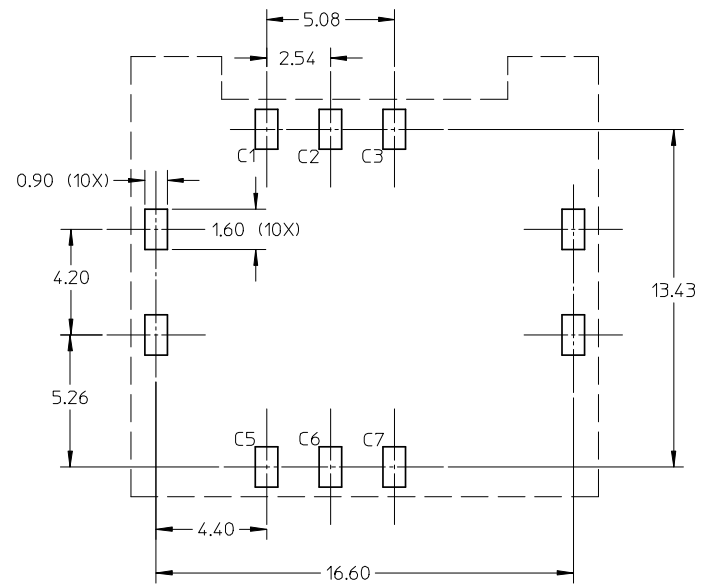
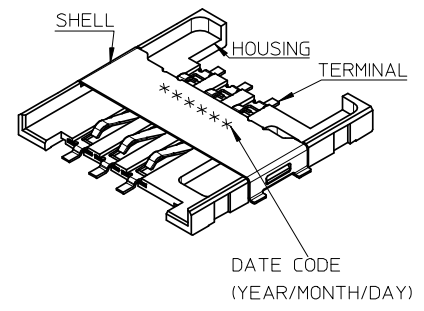
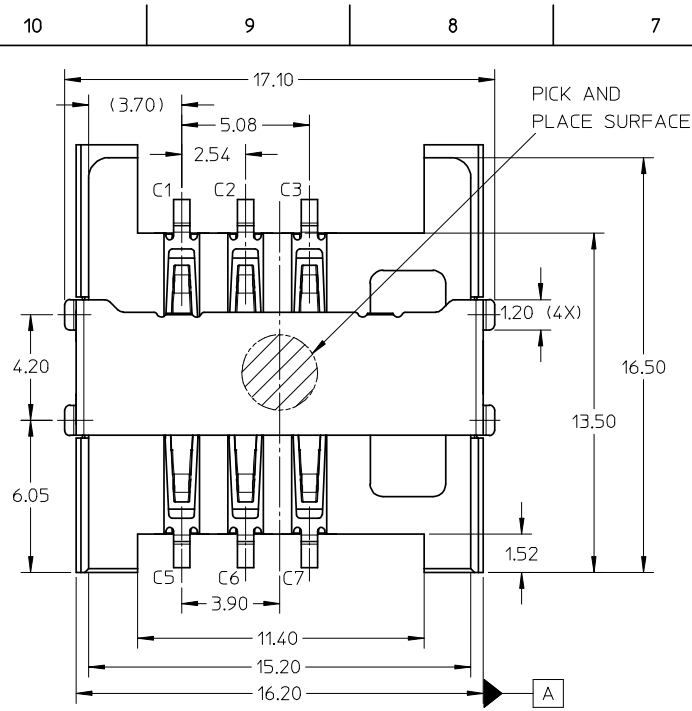
Contact us

Tel: +86-755-8981 8866 Fax: +86-755-8427 6832

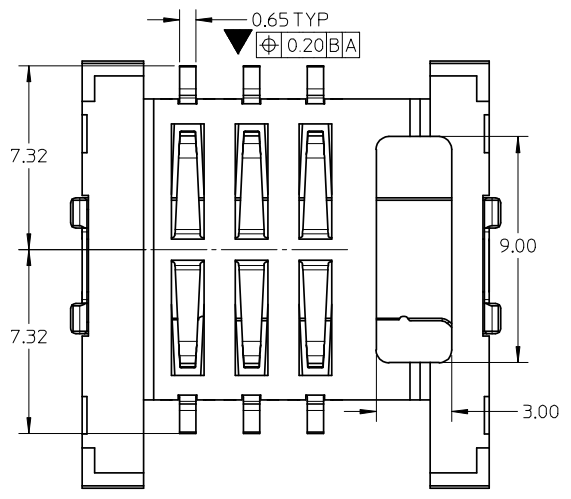
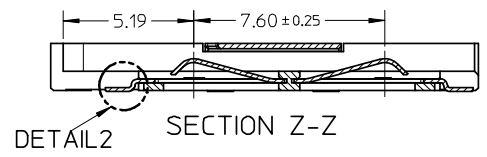
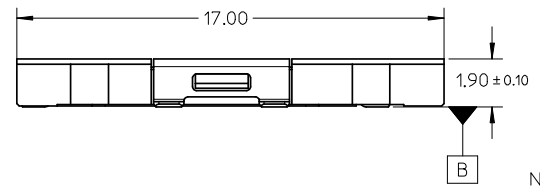
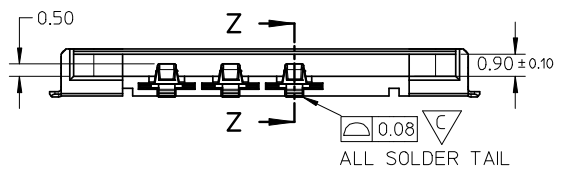
Email & Skype: info@chipsmall.com Web: www.chipsmall.com

Address: A1208, Overseas Decoration Building, #122 Zhenhua RD., Futian, Shenzhen, China





RECOMMENDED PCB LAYOUT
DIMENSIONS GENERAL TOLERANCE : ±0.05



NOTE:
 1 MATERIAL: HOUSING: LCP, GLASS FILLED, UL 94V-0, COLOR:BLACK, TERMINAL: PHOSPHOR BRONZE, THICKNESS:0.15MM SHELL: STAINLESS STEEL, THICKNESS:0.20MM
 2 FINISH: TERMINAL: 50 μ MIN NICKEL PLATING OVER ALL. 15 μ MIN GOLD PLATING ON CONTACT AREA GOLD FLASH PLATING ON SOLDER AREA SHELL: GOLD FLASH OVER 50 μ MIN NICKEL ON SOLDERING AREA
 3 PRODUCT SPECIFICATION: PS-47548-001
 4 PACKAGE INFORMATION: PK-47548-001

RELEASED EC NO: SH2008-0563 DRWN:YWANG91 CHKD:YLZHU APPR:HWANG	QUALITY SYMBOLS ▽=1 C=1	GENERAL TOLERANCES (UNLESS SPECIFIED)		DIMENSION STYLE MM ONLY		SCALE 5:1	DESIGN UNITS METRIC	THIRD ANGLE PROJECTION		
		mm	INCH	DRAWN BY YWANG	DATE 2007/01/16	TITLE ASSEMBLY SIM CARD CONNECTOR 1.9MM HEIGHT				
		4 PLACES ± --- ± ---	3 PLACES ± --- ± ---	CHECKED BY XIXU	DATE 2007/01/17	MOLEX INCORPORATED				
		2 PLACES ± 0.15 ± ---	1 PLACE ± --- ± ---	APPROVED BY JNCHEN	DATE 2007/01/18	DOCUMENT NO. SD-47548-001				
		ANGULAR ± 1 °		MATERIAL NO. 475480001		SHEET NO. 1 OF 1				
		DRAFT WHERE APPLICABLE MUST REMAIN WITHIN DIMENSIONS		THIS DRAWING CONTAINS INFORMATION THAT IS PROPRIETARY TO MOLEX INCORPORATED AND SHOULD NOT BE USED WITHOUT WRITTEN PERMISSION						