



Chipsmall Limited consists of a professional team with an average of over 10 year of expertise in the distribution of electronic components. Based in Hongkong, we have already established firm and mutual-benefit business relationships with customers from,Europe,America and south Asia,supplying obsolete and hard-to-find components to meet their specific needs.

With the principle of "Quality Parts,Customers Priority,Honest Operation,and Considerate Service",our business mainly focus on the distribution of electronic components. Line cards we deal with include Microchip,ALPS,ROHM,Xilinx,Pulse,ON,Everlight and Freescale. Main products comprise IC,Modules,Potentiometer,IC Socket,Relay,Connector.Our parts cover such applications as commercial,industrial, and automotives areas.

We are looking forward to setting up business relationship with you and hope to provide you with the best service and solution. Let us make a better world for our industry!



Contact us

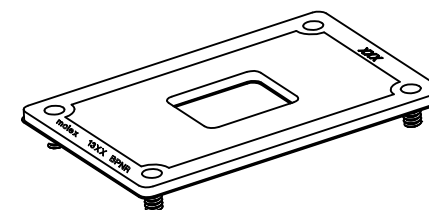
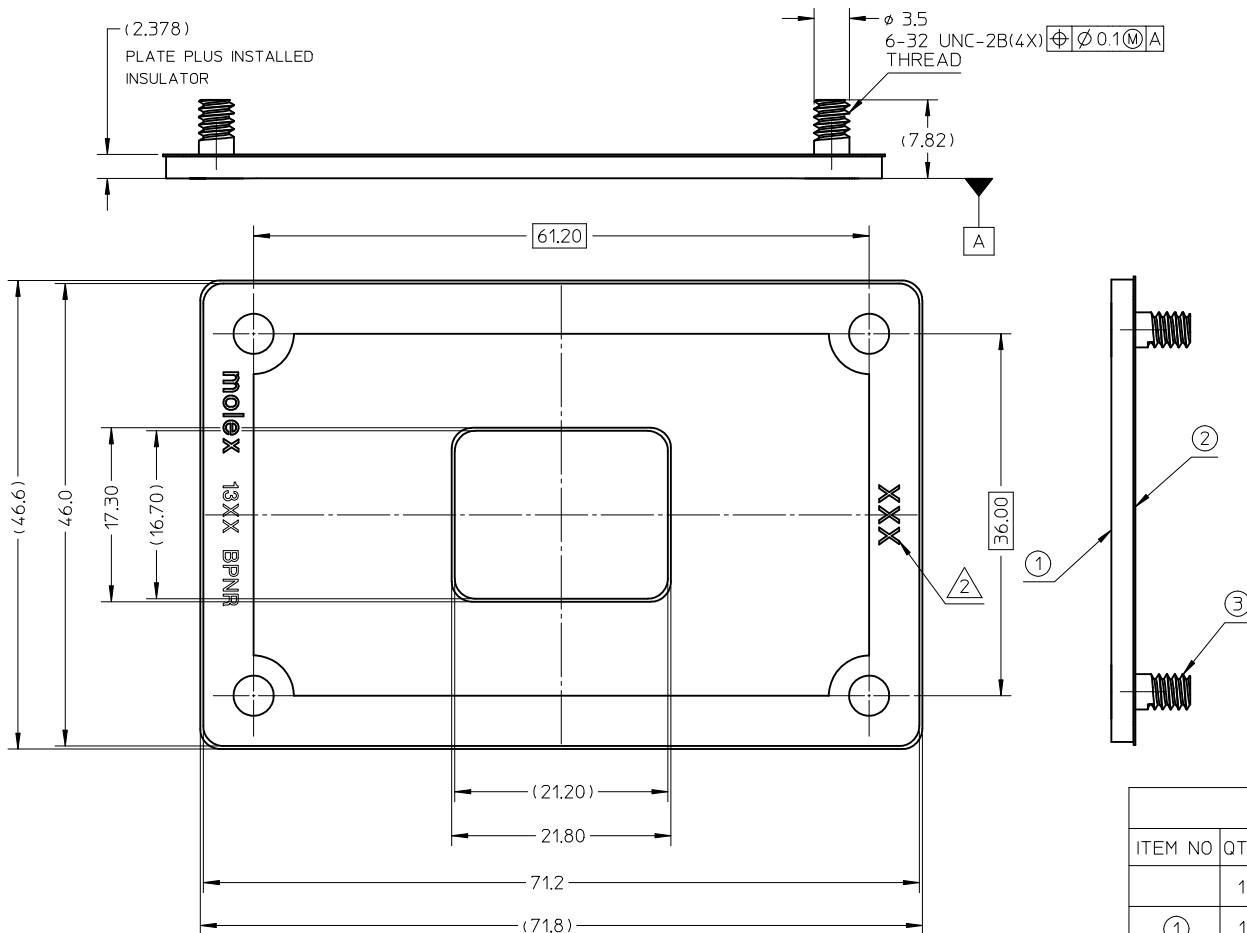
Tel: +86-755-8981 8866 Fax: +86-755-8427 6832

Email & Skype: info@chipsmall.com Web: www.chipsmall.com

Address: A1208, Overseas Decoration Building, #122 Zhenhua RD., Futian, Shenzhen, China



10 9 8 7 6 5 4 3 2 1




NOTES:

1. MATE WITH LGA13XX ILM ASSEMBLY, DETAIL REFER TO SD-47593-900
2. DATE CODE
3. THE PARTS 475938000 COMPLIANT TO RoHS DIRECTIVE 2002/95/EC AND ELV 2000/53/EC

BILL OF MATERIAL

ITEM NO	QTY	DESCRIPTION	MATERIAL
	1	BACK PLATE ASSY FOR DESKTOP	
①	1	BACK PLATE	STEEL WITH NICKEL PLATING
②	1	BACK PLATE INSULATOR	FORMEX GK-5BK
③	4	BACK PLATE SCREW	STEEL WITH NICKEL PLATING

ENTER DESCRIPTION EC NO: SH2011-0324 DRWN: ZHANG11 CHKD: APPR: AYIN REV C	DESCRIPTION 2011/05/19	QUALITY SYMBOLS <div><div>F_A=0</div><div>F_G=0</div><div>F_P=0</div></div>	GENERAL TOLERANCES (UNLESS SPECIFIED)			DIMENSION STYLE MM ONLY		SCALE 1:1	DESIGN UNITS METRIC	 THIRD ANGLE PROJECTION	
				mm	INCH	DRAWN BY YQSUN	DATE 2008/10/13	13XX ILM BACK PLATE FOR DESKTOP APPLICATION			
			4 PLACES	± ---	± ---	CHECKED BY JKACHLIC	DATE 2008/10/13				
			3 PLACES	± ---	± ---	APPROVED BY AYIN	DATE 2010/10/22				
			2 PLACES	± 0.2	± ---	MATERIAL NO. 47593-8000		DOCUMENT NO. SD-47593-800	SHEET NO. 1 OF 1		
			1 PLACE	± 0.3	± ---						
DRAFT WHERE APPLICABLE MUST REMAIN WITHIN DIMENSIONS											