



Chipsmall Limited consists of a professional team with an average of over 10 year of expertise in the distribution of electronic components. Based in Hongkong, we have already established firm and mutual-benefit business relationships with customers from,Europe,America and south Asia,supplying obsolete and hard-to-find components to meet their specific needs.

With the principle of “Quality Parts,Customers Priority,Honest Operation,and Considerate Service”,our business mainly focus on the distribution of electronic components. Line cards we deal with include Microchip,ALPS,ROHM,Xilinx,Pulse,ON,Everlight and Freescale. Main products comprise IC,Modules,Potentiometer,IC Socket,Relay,Connector.Our parts cover such applications as commercial,industrial, and automotives areas.

We are looking forward to setting up business relationship with you and hope to provide you with the best service and solution. Let us make a better world for our industry!



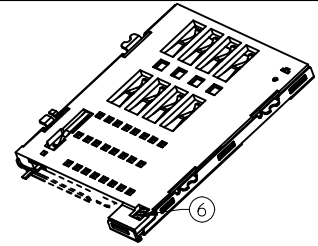
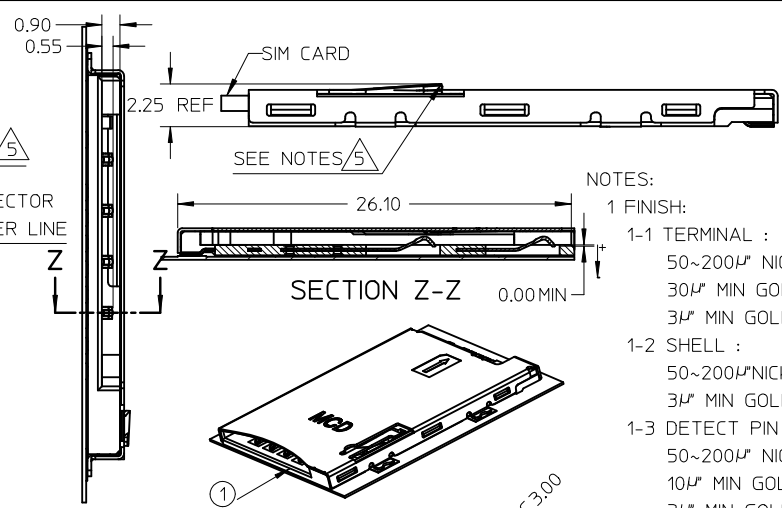
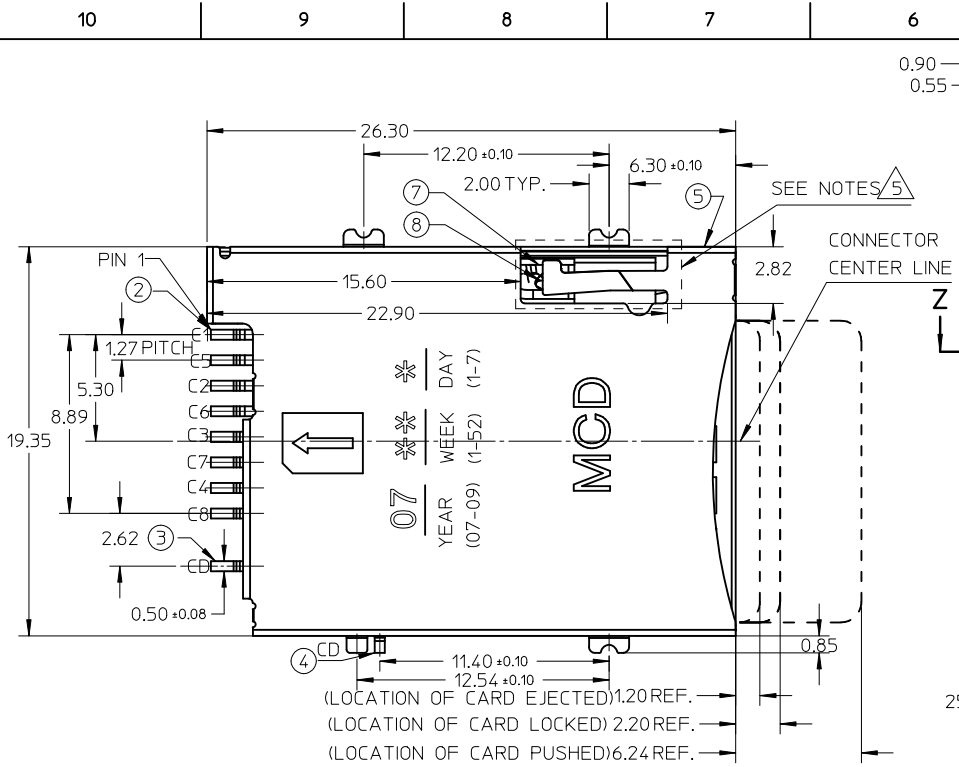
Contact us

Tel: +86-755-8981 8866 Fax: +86-755-8427 6832

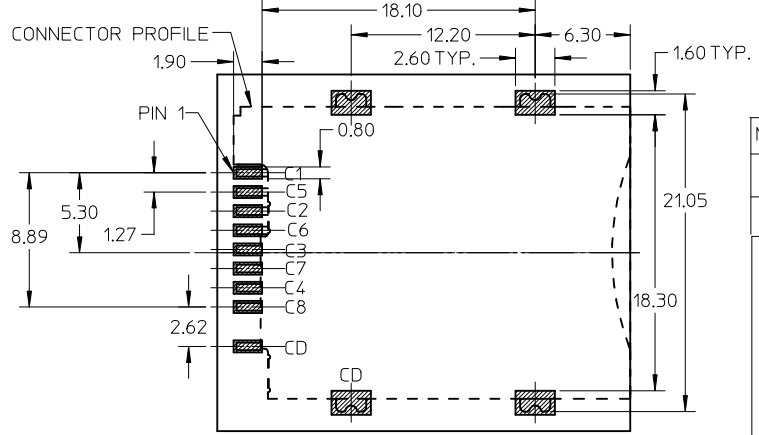
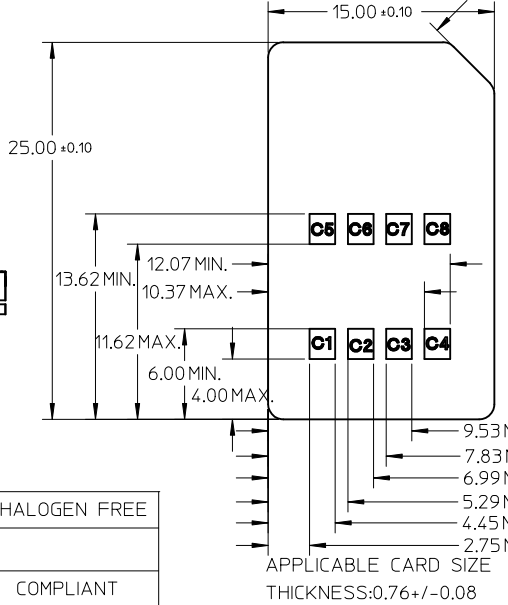
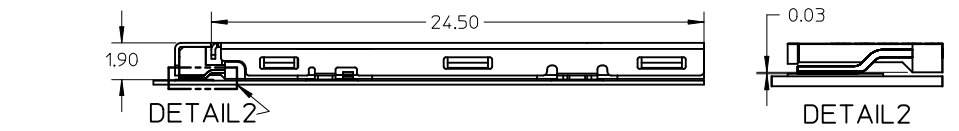
Email & Skype: info@chipsmall.com Web: www.chipsmall.com

Address: A1208, Overseas Decoration Building, #122 Zhenhua RD., Futian, Shenzhen, China





- NOTES:
- 1 FINISH:
 - 1-1 TERMINAL :
 - 50~200μ NICKEL UNDER PLATED
 - 30μ MIN GOLD PLATING ON CONTACT AREA
 - 3μ MIN GOLD FLASH ON SOLDERING AREA
 - 1-2 SHELL :
 - 50~200μ NICKEL UNDER PLATED
 - 3μ MIN GOLD FLASH ON SOLDERING AREA
 - 1-3 DETECT PIN :
 - 50~200μ NICKEL UNDER PLATED
 - 10μ MIN GOLD PLATING ON CONTACT AREA
 - 3μ MIN GOLD FLASH ON SOLDERING AREA
 - 2 SOLDER TAIL COPLANARITY:0.1MM MAX.
 - 3.THIS PART IS LEAD-FREE.
 - 4.DETECT SWITCH: INSERT CARD=OFF (NORMAL=ON)
 - 5.MAXIMAL TOTAL HEIGHT WHEN INSERTING SIM CARD NEED AVOID IN THIS AREA
 - 6.PRODUCT COMPLIANT TO ROHS DIRECTIVE 2002/95/EC AND ELV DIRECTIVE 2000/53/EC



MATERIAL No.	HALOGEN FREE
476030001	
476031001	COMPLIANT

CHG MFG ID	DESCRIPTION
EC NO: S2012-0164	2011/08/29
DRWN:FCS00	2011/09/16
CHKD:JTAN02	2011/09/16
APPR:SKTOH	2011/09/16

QUALITY SYMBOLS	GENERAL TOLERANCES (UNLESS SPECIFIED)														
	<table border="1"> <tr> <td></td> <td>mm</td> <td>INCH</td> </tr> <tr> <td>4 PLACES</td> <td>± ---</td> <td>± ---</td> </tr> <tr> <td>3 PLACES</td> <td>± ---</td> <td>± ---</td> </tr> <tr> <td>2 PLACES</td> <td>± 0.15</td> <td>± ---</td> </tr> <tr> <td>1 PLACE</td> <td>± ---</td> <td>± ---</td> </tr> </table>		mm	INCH	4 PLACES	± ---	± ---	3 PLACES	± ---	± ---	2 PLACES	± 0.15	± ---	1 PLACE	± ---
	mm	INCH													
4 PLACES	± ---	± ---													
3 PLACES	± ---	± ---													
2 PLACES	± 0.15	± ---													
1 PLACE	± ---	± ---													
	ANGULAR ±1/2°														
DRAFT WHERE APPLICABLE MUST REMAIN WITHIN DIMENSIONS															

DIMENSION STYLE	
MM ONLY	
DRAWN BY	DATE
LHSHEN	2007/04/30
CHECKED BY	DATE
XUXIANG	2007/05/22
APPROVED BY	DATE
JENNY CHEN	2007/05/25
MATERIAL NO.	
SEE TABLE	



NO.	DESCRIPTION	Q'TY	MATERIAL
1	HOUSING	1	LCP
2	TERMINAL	8	COPPER ALLOY
3	DETECT PIN #1	1	COPPER ALLOY
4	DETECT PIN #2	1	COPPER ALLOY
5	SHELL	1	SUS
6	COIL SPRING	1	SWP
7	HEART CAM	1	NYLON
8	CAM PIN	1	SUS

SCALE: NTS, DESIGN UNITS: METRIC, THIRD ANGLE PROJECTION

TITLE: PUSH-PUSH 8 PIN SIM WITH DETECT PIN SALES DRAWING

MOLEX MOLEX INCORPORATED

DOCUMENT NO. SD-47603-001, SHEET NO. 1 OF 1

THIS DRAWING CONTAINS INFORMATION THAT IS PROPRIETARY TO MOLEX INCORPORATED AND SHOULD NOT BE USED WITHOUT WRITTEN PERMISSION