



Chipsmall Limited consists of a professional team with an average of over 10 year of expertise in the distribution of electronic components. Based in Hongkong, we have already established firm and mutual-benefit business relationships with customers from,Europe,America and south Asia,supplying obsolete and hard-to-find components to meet their specific needs.

With the principle of “Quality Parts,Customers Priority,Honest Operation,and Considerate Service”,our business mainly focus on the distribution of electronic components. Line cards we deal with include Microchip,ALPS,ROHM,Xilinx,Pulse,ON,Everlight and Freescale. Main products comprise IC,Modules,Potentiometer,IC Socket,Relay,Connector.Our parts cover such applications as commercial,industrial, and automotives areas.

We are looking forward to setting up business relationship with you and hope to provide you with the best service and solution. Let us make a better world for our industry!



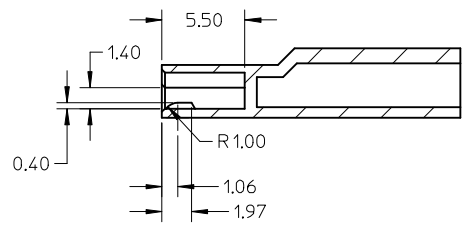
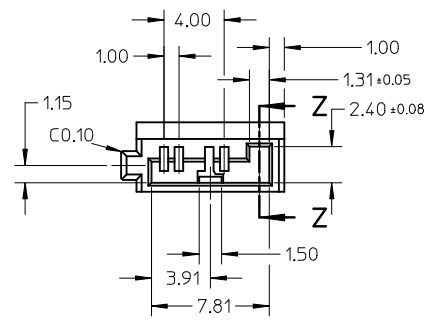
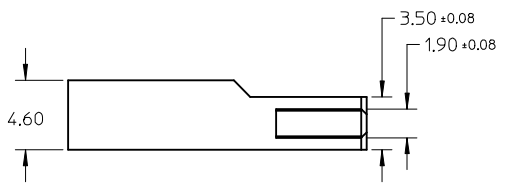
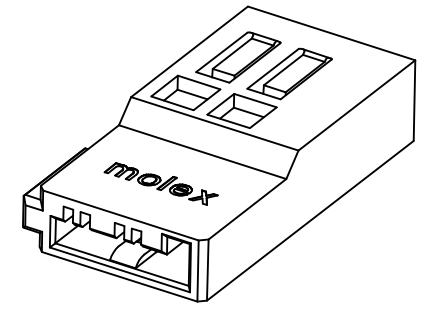
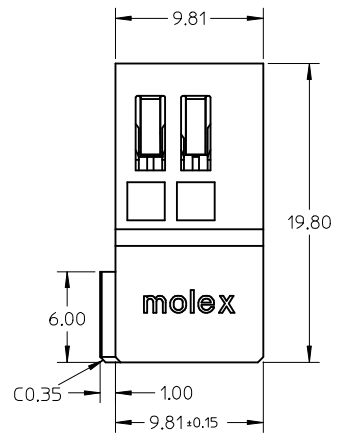
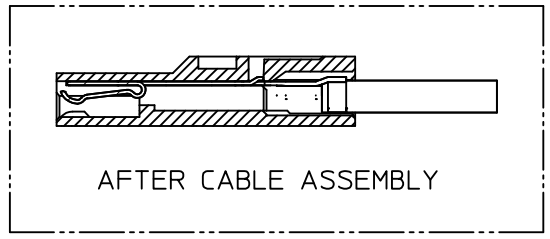
## Contact us

Tel: +86-755-8981 8866 Fax: +86-755-8427 6832

Email & Skype: info@chipsmall.com Web: www.chipsmall.com

Address: A1208, Overseas Decoration Building, #122 Zhenhua RD., Futian, Shenzhen, China





SECTION Z-Z

- NOTES:  
 1. MATERIAL: THERMALPLASTIC, UL94V-0, COLOR: BLACK  
 2. TO BE USED WITH 47634-100\*, 2 SETS TERMINAL PER HOUSING  
 3. PRODUCT SPECIFICATION REFER TO PS-47634-001  
 4. PACKAGE SPECIFICATION REFER TO PK-47634-002

NEW RELEASE EC NO: SH2009-0049 DRW: XQZHANG CHK: XJISONG APPR: HWWANG	2008/08/07 2008/08/12 2008/08/27	DESCRIPTION REV	QUALITY SYMBOLS	GENERAL TOLERANCES (UNLESS SPECIFIED) mm INCH 4 PLACES ± --- ± --- 3 PLACES ± --- ± --- 2 PLACES ± 0.25 ± --- 1 PLACE ± 0.25 ± --- ANGULAR ± 3 °	DIMENSION STYLE	SCALE	DESIGN UNITS	THIRD ANGLE PROJECTION
			▼=0 ◻=0		MM ONLY	4:1	METRIC	
					DRAWN BY	DATE	TITLE	
					HZHAO	2007/10/10	HSG FOR SATA POWER CABLE RECEPTACLE	
	CHECKED BY	DATE	MOLEX INCORPORATED					
	JTIAN	2007/10/10	SD-47634-002					
	APPROVED BY	DATE	MATERIAL NO.					
	HWWANG	2007/10/10	476342000					
			DOCUMENT NO.					
			SD-47634-002					
			SHEET NO.					
			1 OF 1					
			THIS DRAWING CONTAINS INFORMATION THAT IS PROPRIETARY TO MOLEX INCORPORATED AND SHOULD NOT BE USED WITHOUT WRITTEN PERMISSION					