



Chipsmall Limited consists of a professional team with an average of over 10 year of expertise in the distribution of electronic components. Based in Hongkong, we have already established firm and mutual-benefit business relationships with customers from,Europe,America and south Asia,supplying obsolete and hard-to-find components to meet their specific needs.

With the principle of “Quality Parts,Customers Priority,Honest Operation,and Considerate Service”,our business mainly focus on the distribution of electronic components. Line cards we deal with include Microchip,ALPS,ROHM,Xilinx,Pulse,ON,Everlight and Freescale. Main products comprise IC,Modules,Potentiometer,IC Socket,Relay,Connector.Our parts cover such applications as commercial,industrial, and automotives areas.

We are looking forward to setting up business relationship with you and hope to provide you with the best service and solution. Let us make a better world for our industry!



Contact us

Tel: +86-755-8981 8866 Fax: +86-755-8427 6832

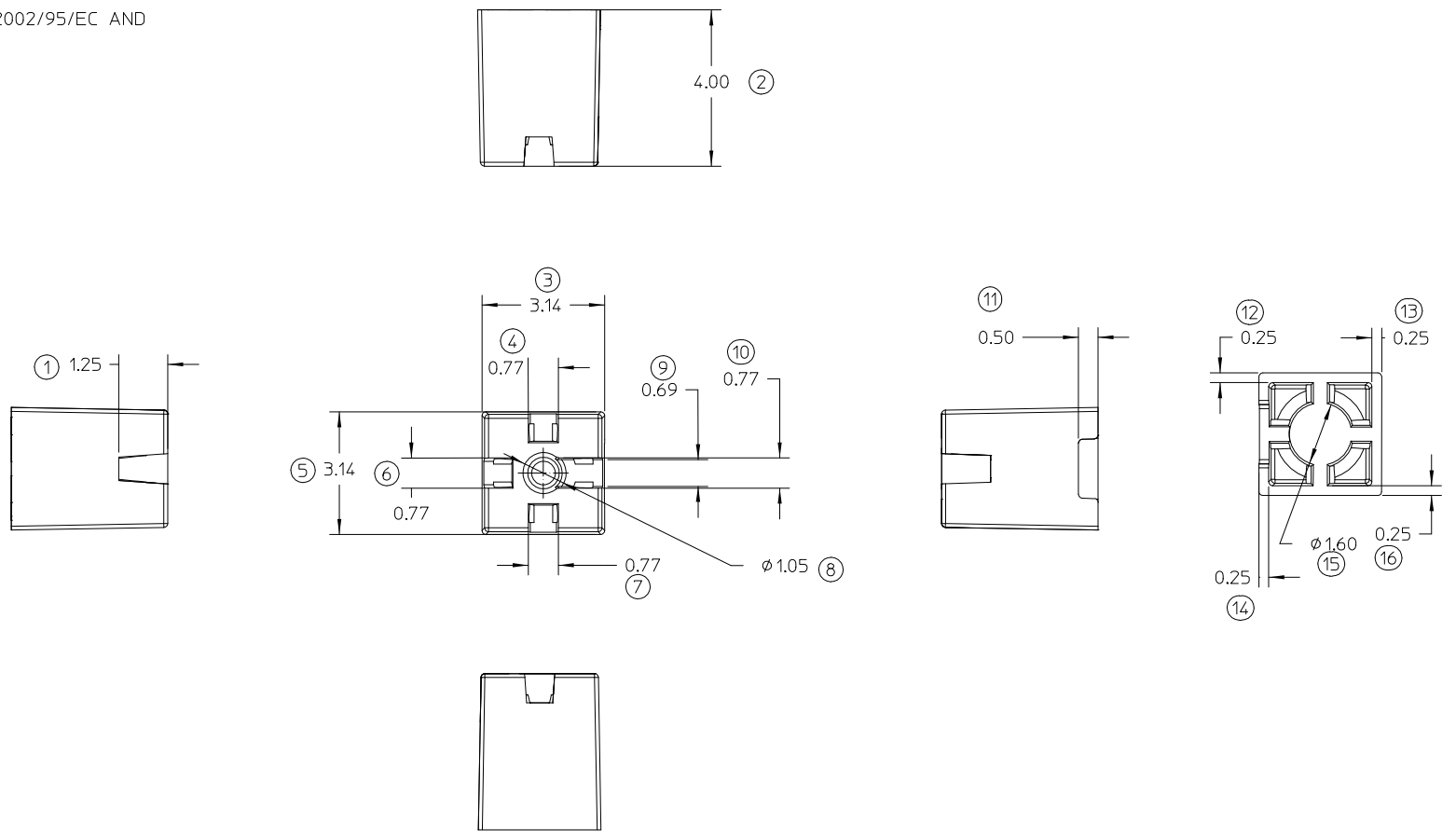
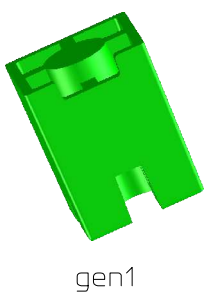
Email & Skype: info@chipsmall.com Web: www.chipsmall.com

Address: A1208, Overseas Decoration Building, #122 Zhenhua RD., Futian, Shenzhen, China



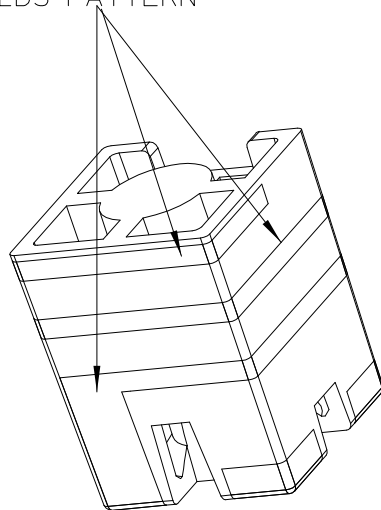
REV	ZONE	EC NO.	DISCRIPTION	DATE
A	ALL	ABU2011-0087	FIRST RELEASE	20110407
B	ALL	ABU2011-0104	DRAWING UPDATE	20110516

NOTE:
 1. MATERIAL :LCP-LDS, VECTRA E840ILDS, 40% MINERAL FILLED LASER DIRECT STRUCTURING GRADE,UL94V-0;
 2.GENERAL TOLERANCE :+/-0.05MM
 3.PRODUCT COMPLANT TO ROHS DIERTIVE 2002/95/EC AND ELV DIRECTIVE2000/53/EC

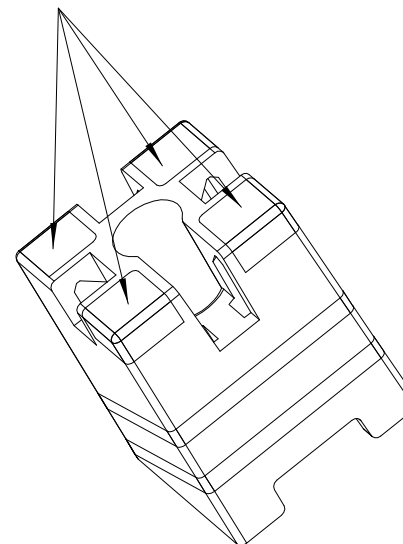


ENTER DESCRIPTION EC NO: DRWN: CHKD: APPR:	QUALITY SYMBOLS F=0 F=0 F=0	GENERAL TOLERANCES (UNLESS SPECIFIED)		DIMENSION STYLE		SCALE 8:1	DESIGN UNITS	THIRD ANGLE PROJECTION
		mm	INCH	DRAWN BY	DATE	TITLE		
		4 PLACES ±	±	COOPRZHOU	20110516	2.4GHZ SMD ON GROND ANTENNA CARRIER		
		3 PLACES ±	±	CHECKED BY	DATE	MOLEX INCORPORATED		
2 PLACES ±	±	ERIC SHI	20110516	DOCUMENT NO.				
1 PLACE ±	±	APPROVED BY	DATE	SD-47948-001				
ANGULAR ± °		DRAFT WHERE APPLICABLE MUST REMAIN WITHIN DIMENSIONS		MATERIAL NO. WELSON TAN 20110516		SHEET NO. 1 OF 3		
SIZE A3		THIS DRAWING CONTAINS INFORMATION THAT IS PROPRIETARY TO MOLEX INCORPORATED AND SHOULD NOT BE USED WITHOUT WRITTEN PERMISSION						

LDS PATTERN



PATTERN FOR SOLDERING



Notes:

1. PLATING SPEC:

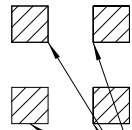
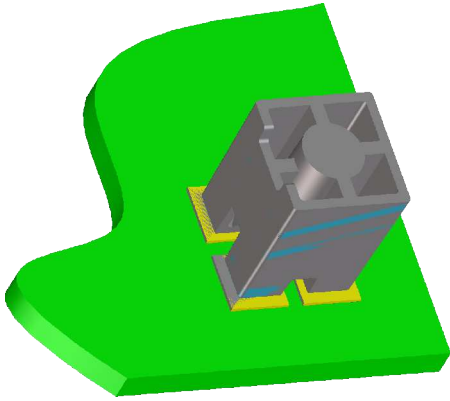
- Cu: 12 um MINIMUM;
- MID P Ni: 2um MINIMUM;
- Au : 0.1uM MINIMUM

2. OVER FLOWING OF PATTERN PROFILE AFTER PLATING:0.03uM MAXIMUM.

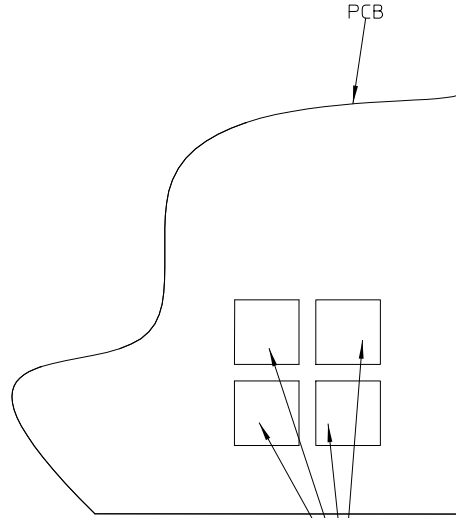
Table-1

Pos	Material Number	Description	Qty
4	479480004	2.4 GHZ SMG ON GROUD (AFTER MOLDING)	1
3	479480003	2.4 GHZ SMG ON GROUD (AFTER LDS)	1
2	479480002	2.4 GHZ SMG ON GROUD (AFTER PLATING)	1
1	479480001	2.4 GHZ SMG ON GROUD (After RF test)	1

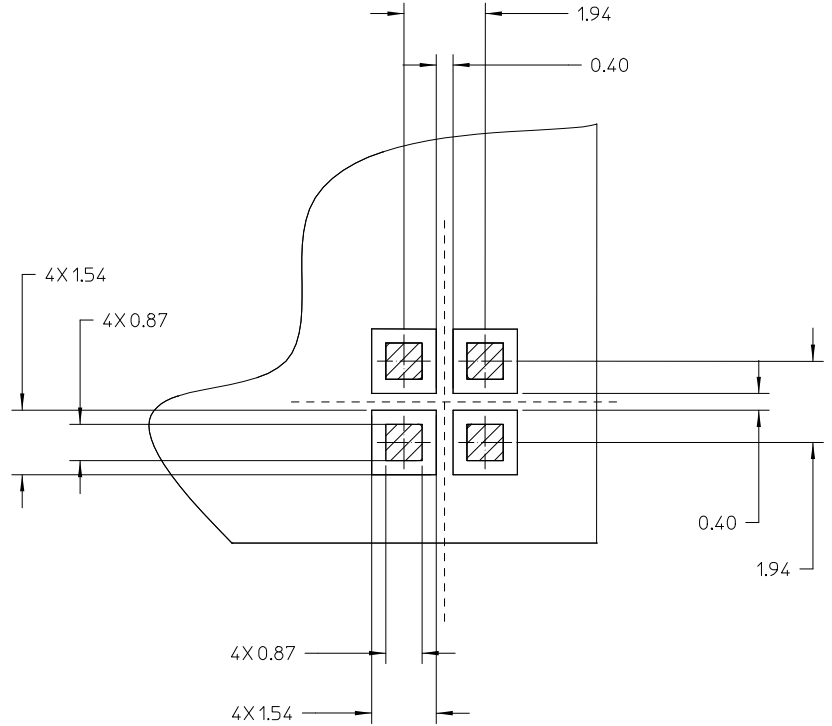
ENTER DESCRIPTION	REV	DESCRIPTION	QUALITY SYMBOLS	GENERAL TOLERANCES (UNLESS SPECIFIED)		DIMENSION STYLE MM ONLY		SCALE 10:1	DESIGN UNITS METRIC	THIRD ANGLE PROJECTION	
			<ul style="list-style-type: none"> ▽=0 ▽C=0 ◇=0 ◆=1 	4 PLACES ±	mm	INCH	DRAWN BY COOPERZHOU	DATE 20110516	TITLE 2.4 GHZ SMG ON GROUD ANTENNA PATTERN		
			3 PLACES ±	±	±	CHECKED BY ERIC SHI	DATE 20110516				
			2 PLACES ±	±	±	APPROVED BY WESTON TAN	DATE 20110516	molex MOLEX INCORPORATED			
			1 PLACE ±	±	±	MATERIAL NO. See Table-1	DOCUMENT NO. SD-47948-001			SHEET NO. 2 OF 3	
DRAFT WHERE APPLICABLE MUST REMAIN WITHIN DIMENSIONS			SIZE A4		THIS DRAWING CONTAINS INFORMATION THAT IS PROPRIETARY TO MOLEX INCORPORATED AND SHOULD NOT BE USED WITHOUT WRITTEN PERMISSION						



THE CONTACT PAD ON PRODUCT FOR SOLDERING



THE FOOTPRINT ON PWB FOR SOLDERING



RECOMENED PWB PATTERN LAYOUT

ENTER DESCRIPTION EC NO: DRWN: CHKD: APPR:	DESCRIPTION REV	QUALITY SYMBOLS	GENERAL TOLERANCES (UNLESS SPECIFIED)		DIMENSION STYLE		SCALE 8:1	DESIGN UNITS	THIRD ANGLE PROJECTION
		$F=0$ $F=0$ $F=0$	mm INCH	DRAWN BY DATE COOPRZHOU 20110516	TITLE				
		4 PLACES ± ± 3 PLACES ± ± 2 PLACES ± ± 1 PLACE ± ±	ANGULAR ± °	CHECKED BY DATE ERIC SHI 20110516	FOOTPRINT FOR 2.4 SMD ON GROND ANTENNA				
		DRAFT WHERE APPLICABLE MUST REMAIN WITHIN DIMENSIONS	SEE SHIFT 2	APPROVED BY DATE WELSON IAN 20110516	MOLEX INCORPORATED DOCUMENT NO. SD-47948-001		SHEET NO. 3 OF 3		