



Chipsmall Limited consists of a professional team with an average of over 10 year of expertise in the distribution of electronic components. Based in Hongkong, we have already established firm and mutual-benefit business relationships with customers from,Europe,America and south Asia,supplying obsolete and hard-to-find components to meet their specific needs.

With the principle of “Quality Parts,Customers Priority,Honest Operation,and Considerate Service”,our business mainly focus on the distribution of electronic components. Line cards we deal with include Microchip,ALPS,ROHM,Xilinx,Pulse,ON,Everlight and Freescale. Main products comprise IC,Modules,Potentiometer,IC Socket,Relay,Connector.Our parts cover such applications as commercial,industrial, and automotives areas.

We are looking forward to setting up business relationship with you and hope to provide you with the best service and solution. Let us make a better world for our industry!



Contact us

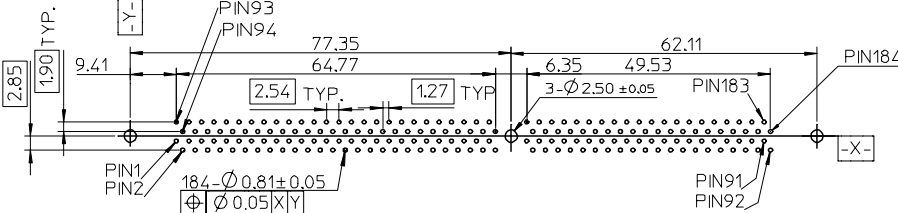
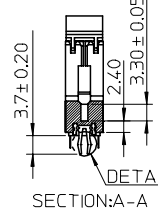
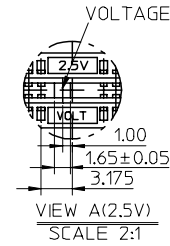
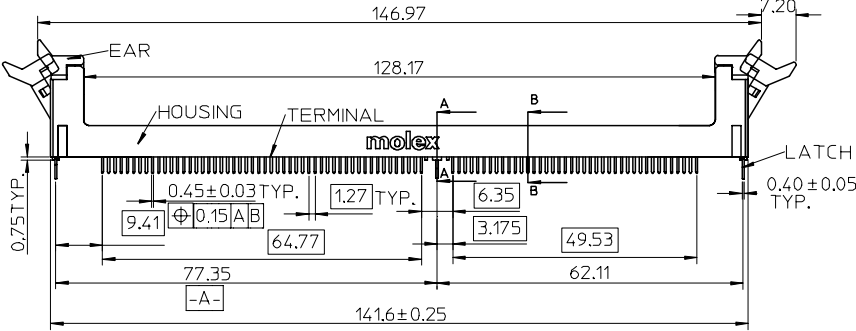
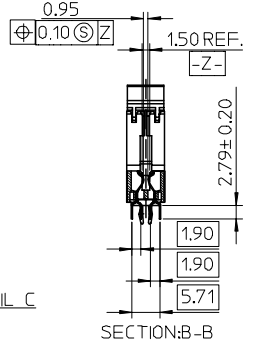
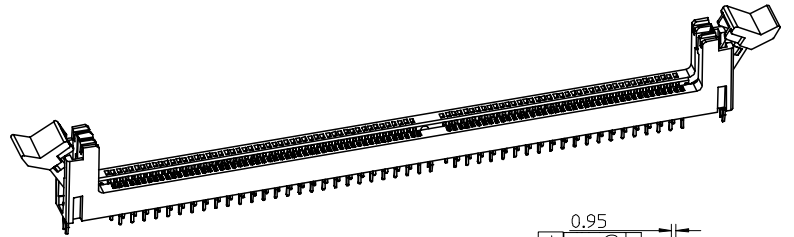
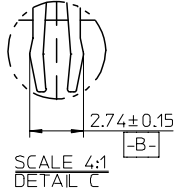
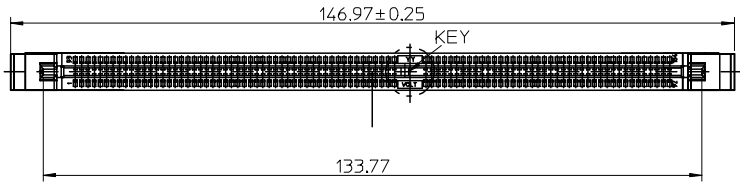
Tel: +86-755-8981 8866 Fax: +86-755-8427 6832

Email & Skype: info@chipsmall.com Web: www.chipsmall.com

Address: A1208, Overseas Decoration Building, #122 Zhenhua RD., Futian, Shenzhen, China



10 9 8 7 6 5 4 3 2 1



RECOMMENDED PCB HOLE LAYOUT
(TOLERANCE ±0.05MM)

- NOTES:
- 1.MATERIALS: HOUSING-POLYAMIDE, GLASS FIBER FILLED, UL94V-0, COLOR: SEE TABLE.
EAR-POLYAMIDE, GLASS FIBER FILLED, UL94V-0, COLOR: WHITE.
TERMINAL-1, PHOSPHOR BRONZE
2, BRASS
LATCH-BRASS
 - 2.FINISHES: TERMINAL:
GOLD PLATED IN CONTACT AREA (SEE TABLE);
TIN ALLOY IN THE SOLDER AREA;
THICKNESS=150 MICRONCH MINIMUM;
UNDER PLATED: NICKEL(NI)
THICKNESS=50 MICRONCH MINIMUM;
LATCH:
TIN PLATED ALL OVER;
THICKNESS=100 MICRONCH MINIMUM;
UNDER PLATED: NICKEL(NI)
THICKNESS=50 MICRONCH MINIMUM;
 - 3.RECOMMENDED PCB THICKNESS: 1.60±0.05MM
 - 4.PRODUCT SPECIFICATION: REFER TO PS-48006-002
 - 5.TEST SUMMARY: REFER TO TS-48006-002
 - 6.PACKAGING: REFER TO PK-48006-002
 - 7.LEAD-FREE AND ROHS COMPLIANCE

48006-1102	15 MICROINCH	PHOSPHOR BRONZE	2.5V	BLACK
48006-2102	15 MICROINCH			BLUE 2945C
48006-5101	GOLD FLASH			YELLOW 115U
48006-4101	GOLD FLASH			LAVENDER 2736U
48006-3101	GOLD FLASH			GREEN 3258U-3268U
48006-2101	GOLD FLASH			BLUE 2945C
48006-1101	GOLD FLASH	BRASS	2.5V	BLACK
48006-2112	15 MICROINCH			BLUE 2945C
48006-1112	15 MICROINCH			BLACK
48006-5111	GOLD FLASH			YELLOW 115U
48006-4111	GOLD FLASH			LAVENDER 2736U
48006-3111	GOLD FLASH			GREEN 3258U-3268U
48006-2111	GOLD FLASH	BLUE 2945C		
48006-1111	GOLD FLASH	BLACK		
MOLEX P/N	CONTACT PLATING	MATERIAL	POWER SUPPLY	COLOR

L/F FOR 48006
EC NO: SH2005-0376
DRWN: JCHEN12
CHKD: 2005/08/04
APPR: WWSCHANG 2005/08/04

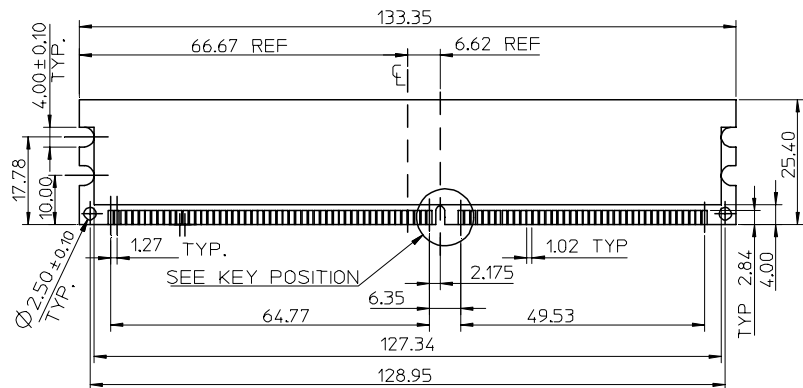
QUALITY SYMBOLS
▽=0
▽=0

GENERAL TOLERANCES (UNLESS SPECIFIED)	
mm	INCH
4 PLACES ± ---	± ---
3 PLACES ± ---	± ---
2 PLACES ± 0.25	± ---
1 PLACE ± 0.25	± ---
ANGULAR ± 3°	
DRAFT WHERE APPLICABLE MUST REMAIN WITHIN DIMENSIONS	

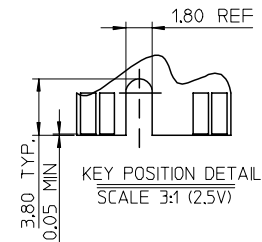
DIMENSION STYLE	
MM ONLY	
DRAWN BY	DATE
JIANG	2005/04/13
CHECKED BY	DATE
ERIC KAO	2005/04/13
APPROVED BY	DATE
WSCHANG	2005/04/13
MATERIAL NO.	DOCUMENT NO.
SEE TABLE	SD-48006-002
SIZE	SHEET NO.
A3	1 OF 2

SCALE 1:1
DESIGN UNITS METRIC
THIRD ANGLE PROJECTION
TITLE
1.27MM PITCH DDR DIMM
SINGLE KEY 2.5V 184CKTS
(LEAD-FREE VERSION)
MOLEX MOLEX INCORPORATED

9 8 7 6 5 4 3 2 1



PLUG COMPONENT:DDR 184P FUNC. CARD



NOTE:
SEE JEDEC SPEC M0-206 FOR COMPLETE MODULE
DETAILS 1.27±0.10 THICK ACROSS CONTACT RADS

SEE SHEET 1 EC NO: SH2005-0376 DRWN: JCHEN12 CHKD: 2005/08/04 APPR: WWSCHANG 2005/08/04	QUALITY SYMBOLS	GENERAL TOLERANCES (UNLESS SPECIFIED)	DIMENSION STYLE	SCALE	DESIGN UNITS	THIRD ANGLE PROJECTION															
	$\nabla = 0$ $\nabla \square = 0$	<table border="1"> <thead> <tr> <th></th> <th>mm</th> <th>INCH</th> </tr> </thead> <tbody> <tr> <td>4 PLACES</td> <td>± ---</td> <td>± ---</td> </tr> <tr> <td>3 PLACES</td> <td>± ---</td> <td>± ---</td> </tr> <tr> <td>2 PLACES</td> <td>± 0.25</td> <td>± ---</td> </tr> <tr> <td>1 PLACE</td> <td>± 0.25</td> <td>± ---</td> </tr> </tbody> </table>		mm	INCH	4 PLACES	± ---	± ---	3 PLACES	± ---	± ---	2 PLACES	± 0.25	± ---	1 PLACE	± 0.25	± ---	MM ONLY	1:1	METRIC	
		mm	INCH																		
	4 PLACES	± ---	± ---																		
3 PLACES	± ---	± ---																			
2 PLACES	± 0.25	± ---																			
1 PLACE	± 0.25	± ---																			
	ANGULAR ± 3 °																				
	DRAFT WHERE APPLICABLE MUST REMAIN WITHIN DIMENSIONS	SIZE A3	DRAWN BY: JIANG DATE: 2005/04/13 CHECKED BY: ERIC KAO DATE: 2005/04/13 APPROVED BY: WSC HANG DATE: 2005/04/13	TITLE: 1.27MM PITCH DDR DIMM SINGLE KEY 2.5V 184CKTS (LEAD-FREE VERSION) MOLEX INCORPORATED		MATERIAL NO. DOCUMENT NO. SD-48006-002 SHEET NO. 2 OF 2															