



Chipsmall Limited consists of a professional team with an average of over 10 year of expertise in the distribution of electronic components. Based in Hongkong, we have already established firm and mutual-benefit business relationships with customers from,Europe,America and south Asia,supplying obsolete and hard-to-find components to meet their specific needs.

With the principle of "Quality Parts,Customers Priority,Honest Operation,and Considerate Service",our business mainly focus on the distribution of electronic components. Line cards we deal with include Microchip,ALPS,ROHM,Xilinx,Pulse,ON,Everlight and Freescale. Main products comprise IC,Modules,Potentiometer,IC Socket,Relay,Connector.Our parts cover such applications as commercial,industrial, and automotives areas.

We are looking forward to setting up business relationship with you and hope to provide you with the best service and solution. Let us make a better world for our industry!



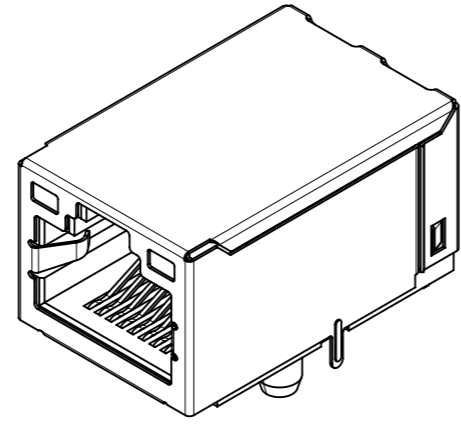
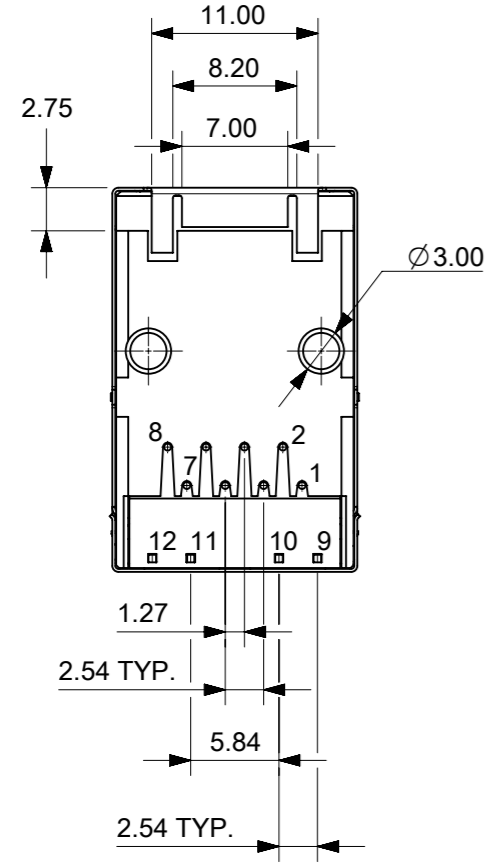
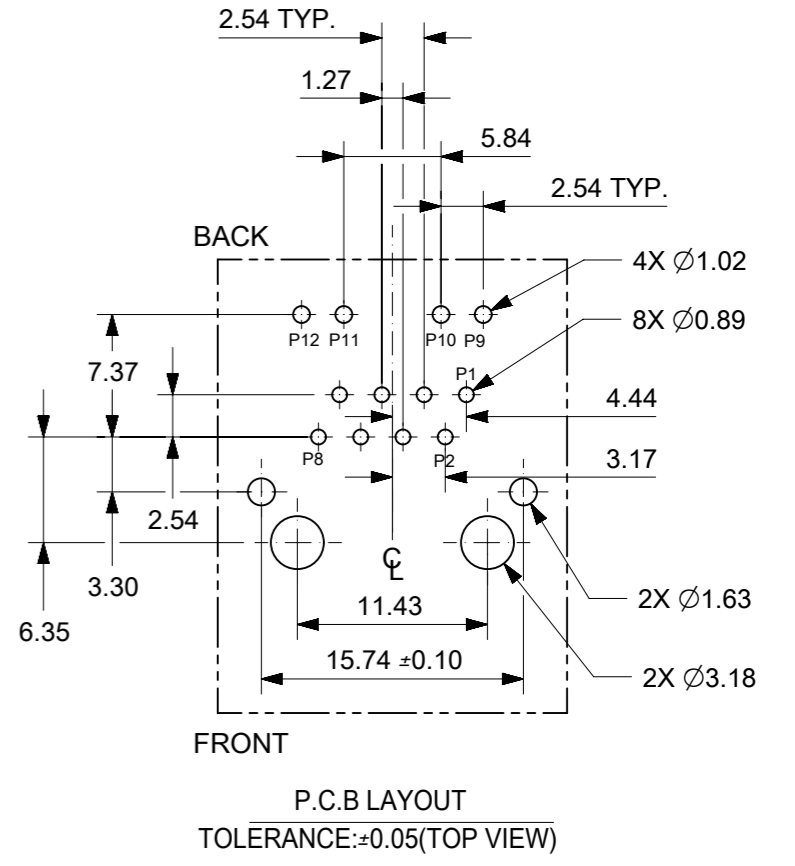
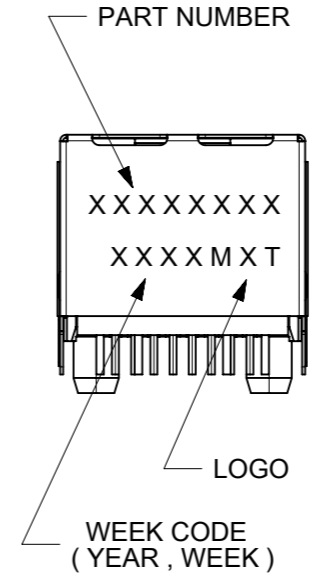
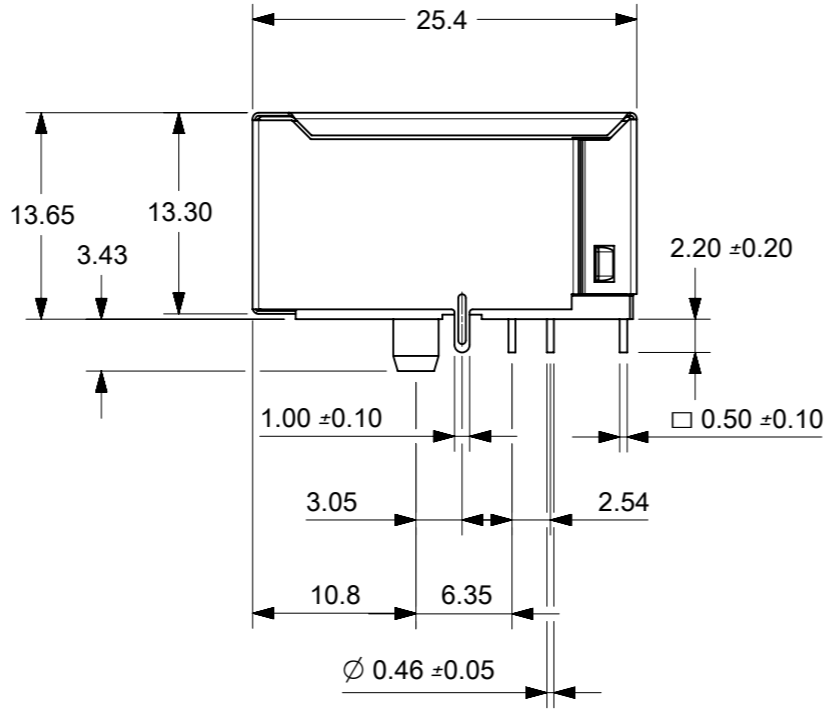
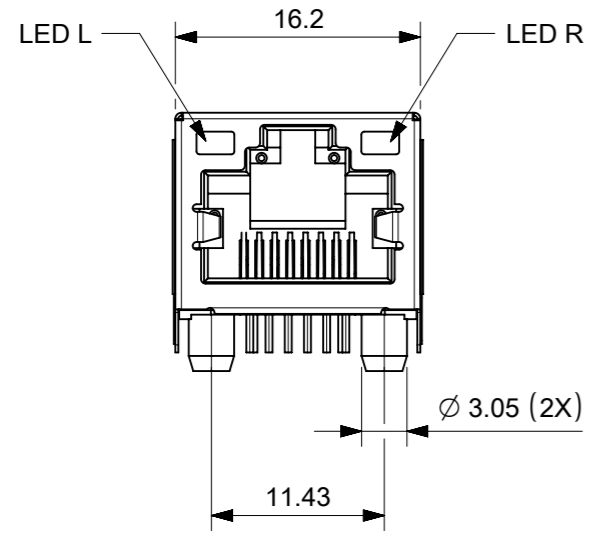
## Contact us

Tel: +86-755-8981 8866 Fax: +86-755-8427 6832

Email & Skype: info@chipsmall.com Web: www.chipsmall.com

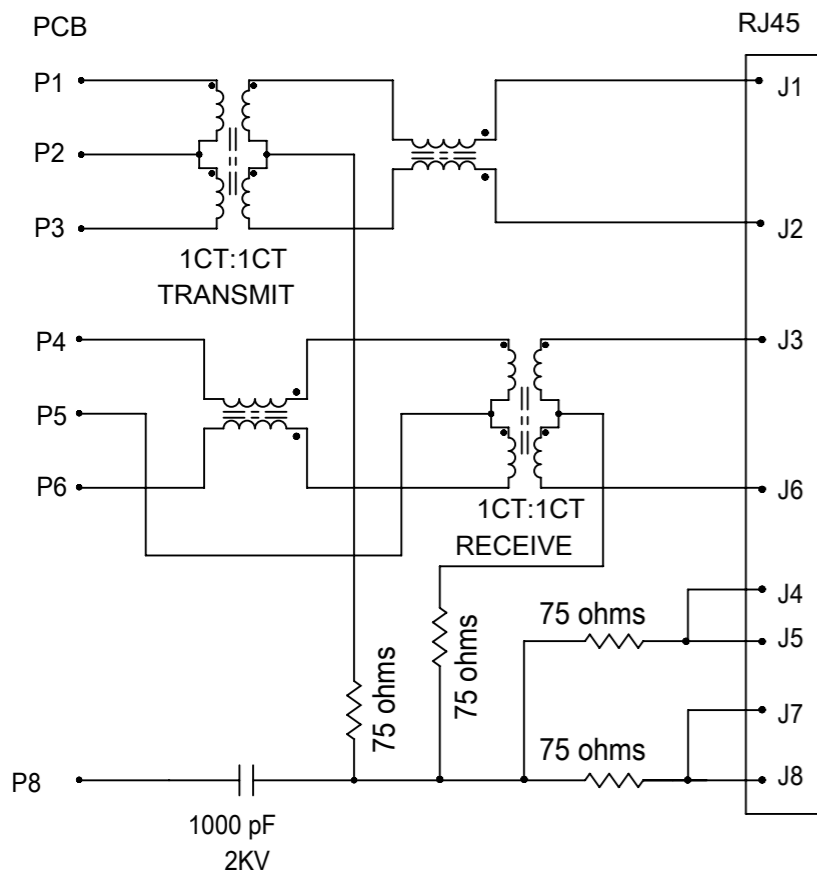
Address: A1208, Overseas Decoration Building, #122 Zhenhua RD., Futian, Shenzhen, China





- NOTES:**
- MATERIAL:**  
METAL SHELL: BRASS.  
HOUSING: HIGH TEMP THERMOPLASTIC, UL94-0, COLOR BLACK.  
INSERT: HIGH TEMP THERMOPLASTIC, UL94-0, COLOR BLACK.  
TERMINAL: PHOSPHOR BRONZE.
  - PLATING:**  
TERMINAL:  
CONTACT AREA: GOLD(Au), THICKNESS=50 MICROINCH/1.27 MICROMETER.  
SOLDER TAIL: TIN(Sn), THICKNESS=100 MICROINCH MINIMUM/2.54 MICROMETER.  
UNDER PLATE: NICKEL (Ni). THICKNESS=50 MICROINCH/1.27 MICROMETER.  
METAL SHELL:  
SOLDER TAIL: PRE-SOLDER TIN(Sn)  
UNDER PLATE: NICKEL (Ni), (SOLDERING AVAILABLE)  
THICKNESS=50 MICROINCH MINIMUM.  
SURFACE APPEARANCE: BRIGHT.
  - RECOMMENDED PCB THICKNESS: 1.60±0.05**
  - PRODUCT SPECIFICATION REFER TO PS-48025-092**
  - TEST SUMMARY REFER TO TS-48025-092**
  - PACKAGING SPECIFICATION REFER TO PK-48025-092**
  - LEAD FREE AND RoHS AND SILICON FREE COMPLIANT PRODUCT**

SYMBOLS	THIS DRAWING CONTAINS INFORMATION THAT IS PROPRIETARY TO MOLEX ELECTRONIC TECHNOLOGIES, LLC AND SHOULD NOT BE USED WITHOUT WRITTEN PERMISSION		CURRENT REV DESC:		<b>molex</b>
	DIMENSION UNITS	SCALE			
▽ = 0	mm	2:1			MODULAR JACK INTERGRATED MAGNETICS WITH LED
▽ = 0	GENERAL TOLERANCES (UNLESS SPECIFIED)				
▽ = 0	ANGULAR TOL ± 3.0°				PRODUCT CUSTOMER DRAWING
▽ = 0	4 PLACES	±			
▽ = 0	3 PLACES	±			DOCUMENT NUMBER <b>SD-48025-013</b>
▽ = 0	2 PLACES	± 0.25			
▽ = 0	1 PLACE	± 0.25			DOC TYPE PSD
▽ = 0	0 PLACES	±			
□ = 0	DRAFT WHERE APPLICABLE MUST REMAIN WITHIN DIMENSIONS		THIRD ANGLE PROJECTION	DRAWING	DOC PART 001
▽ = 0			⊕	A3-SIZE	
			SERIES	MATERIAL NUMBER	DOC PART 001
			48025	48025-1092	
			CUSTOMER	REVISION	
			GENERAL MARKET	B	
			SHEET NUMBER		1 OF 2



MAGNETIC SCHEMATIC

- TEST NOTES:  
 UNLESS OTHERWISE SPECIFIED, TESTING IS PERFORMED AT 25°C±5°C.
- 1.0 HIPOT(100%):
    - 1.1 FIGURE 8. APPLY 2250VDC FOR 10 SEC FROM PCB PINS(1,2,3,4,5,6,7,8) & LED PINS(9,10,11,12) & SHIELD TO CABLE PINS(1,2,3,4,5,6,7,8) MAX. LEAKAGE CURRENT=2mA
    - 1.2 FIGURE 9. APPLY 500VDC FOR 10 SEC BETWEEN ALL PCB PINS & ALL LED PINS TO SHIELD MAX. LEAKAGE CURRENT=1mA
  - 2.0 OCL:100% 100 KHz. 100 mV. 8mADC BIAS  
 PCB(1-3) & CABLE(3-6)=440µH MIN.
  - 3.0 OPENS AND SHORTS(100%):PER PQ 3.064,000
    - 3.1 VERIFY FOLLOWING CONTINUITY:
      - PCB(2-1)=(2-3)=0.7 OHMS MAXIMUM
      - PCB(4-5)=(6-5)=0.8 OHMS MAXIMUM
      - CABLE(1-2)=(3-6)=1.5 OHMS MAXIMUM
      - CABLE(1-3)=(2-6)=140 TO 160 OHMS
      - CABLE(4-5)=(7-8)=0.5 OHMS MAXIMUM
      - CABLE(1-4)=(1-8)=CABLE(5-8)=140 TO 160 OHMS
      - CABLE(3-5)=(3-7)=140 TO 160 OHMS
    - 3.2 VERIFY OPEN (RESISTANCE>10 MEGOHMS)  
 PCB(3) TO PCB(4), PCB(6) TO PCB(7), PCB(6) TO PCB(8).  
 PCB(7) TO PCB(8); LED(9,10,11,12) TO PCB(1,2,3,4,5,6,7,8).
  - 4.0 CAPACITANCE:(100%) 1KHz,1V  
 PCB(8) TO CABLE(8)=0.001µF±25%
  - 5.0 LED OPERATION:(100%)SEE FIGURE 10  
 SET 9.0 VOLT POWER SUPPLY TO CURRENT LIMIT AT 20 mA MAXIMUM.  
 INSERT MODULE INTO FIXTURE AND VERIFY BOTH LEDS LIGHT AND  
 ARE IN THEIR PROPER LOCATION.
  - 6.0 TURNS RATIO:(100%) TEST AT 100 KHz,100mV  
 PCB(1-3)/CABLE(1-2)=PCB(4-6)/CABLE(3-6)=1.00±2%

LED ELECTRICAL SPECIFICATION

PARAMETER	YELLOW (TYP.)		GREEN (TYP.)		UNITS	TEST CONDITIONS
POWER DISSIPATION	105		105		mW	
REVERSE VOLTAGE	5		5		V	
PEAK WAVELENGTH	590		565		nm	I <sub>F</sub> =20mA
FORWARD VOLTAGE	2.1	MAX.=2.5	2.2	MAX.=2.5	V	I <sub>F</sub> =20mA

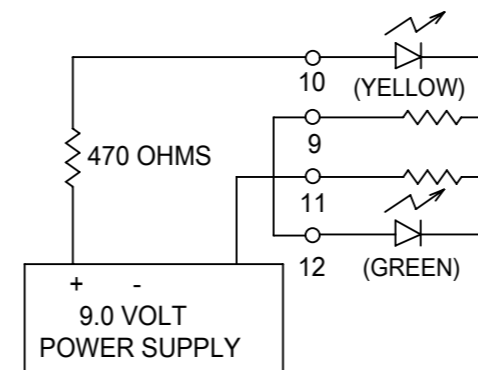


FIGURE 10

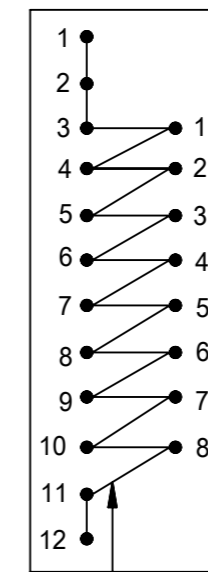


FIGURE 9

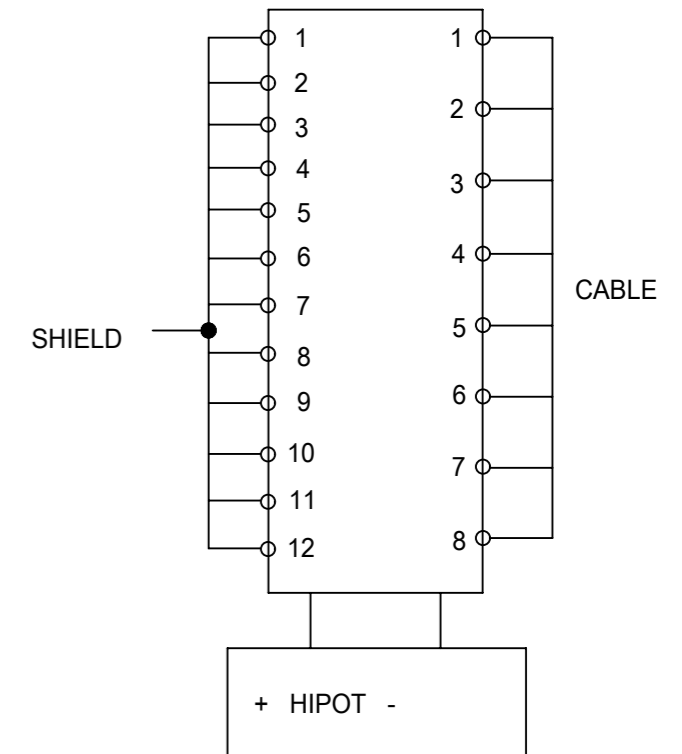
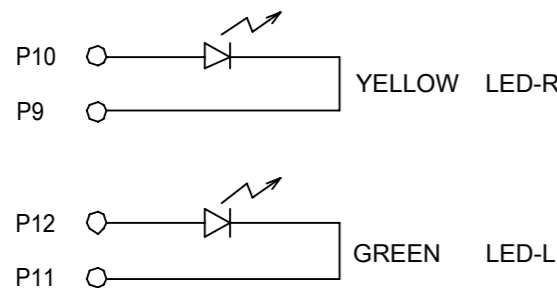
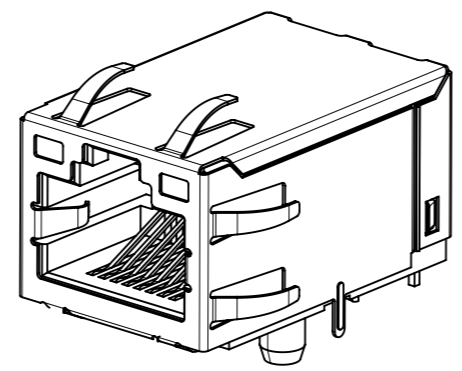
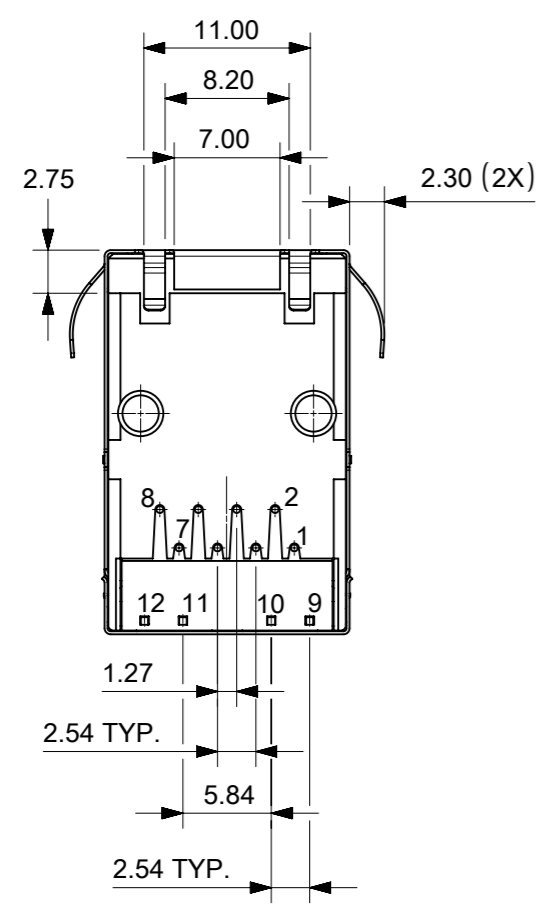
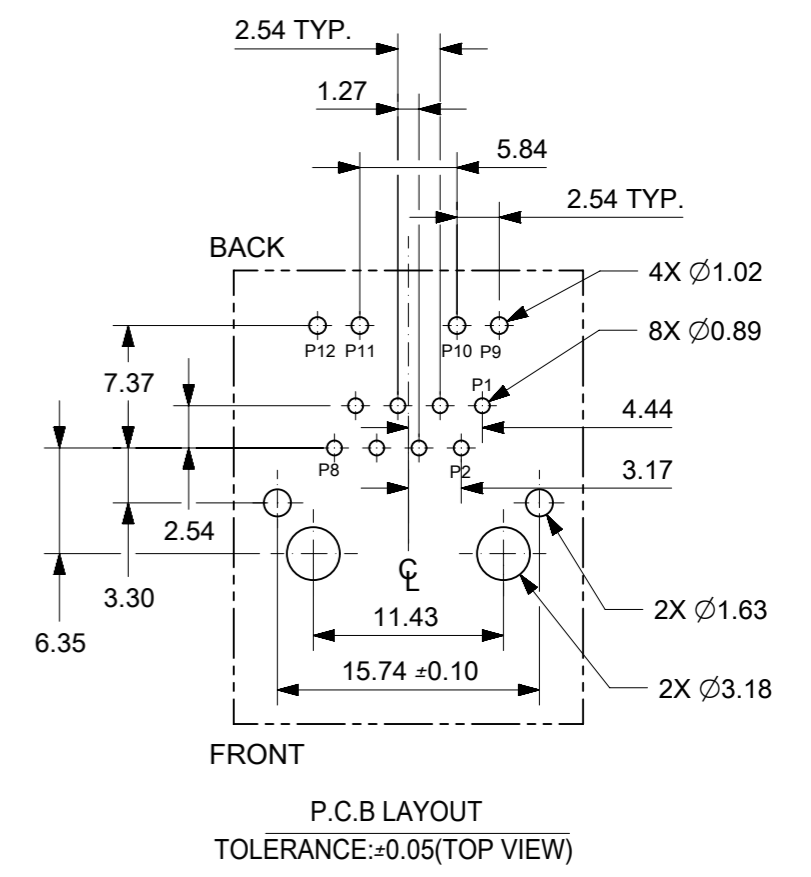
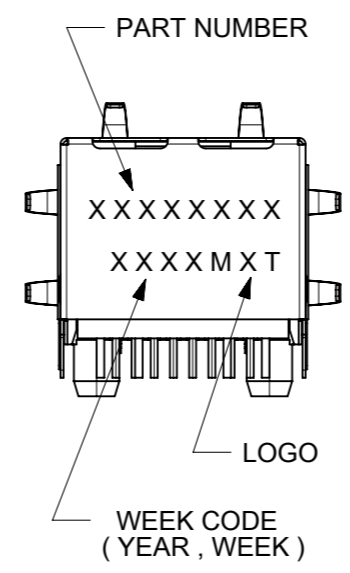
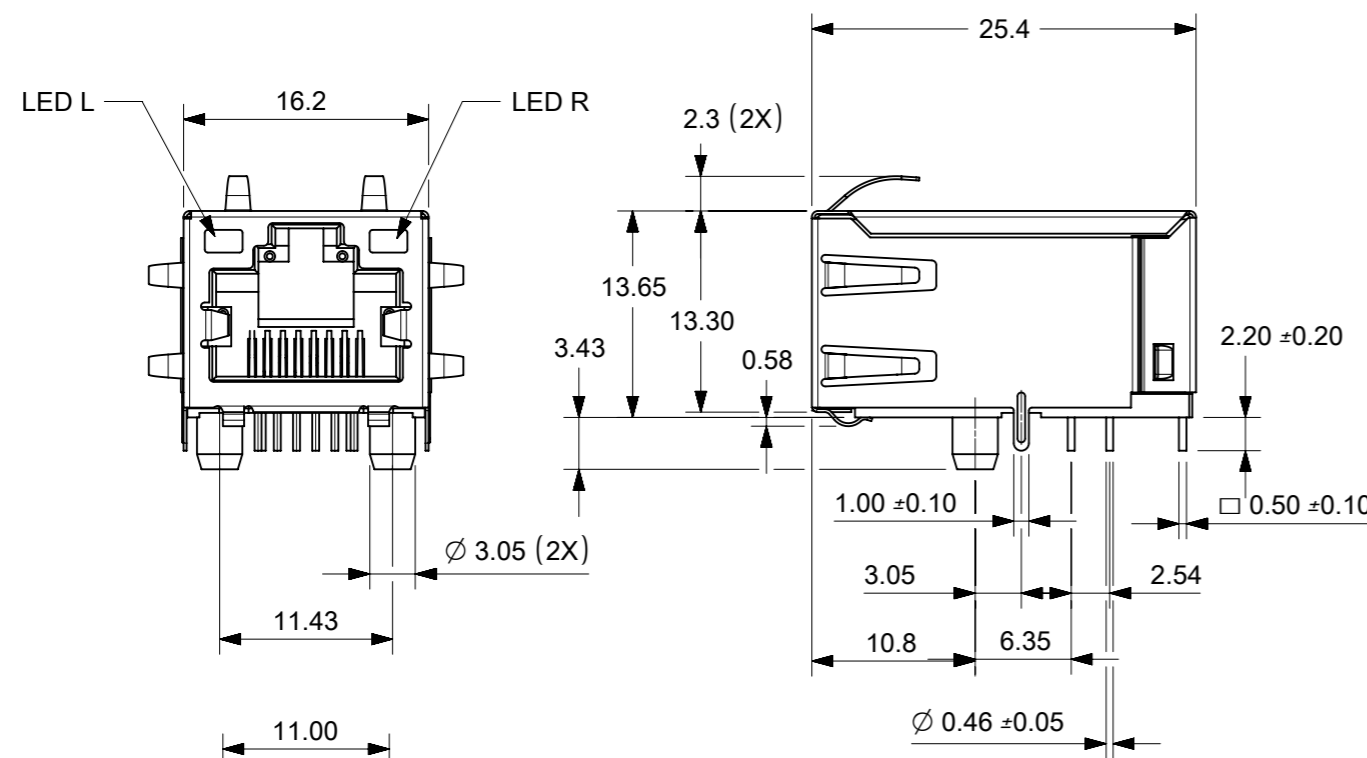


FIGURE 8



LED SCHEMATIC

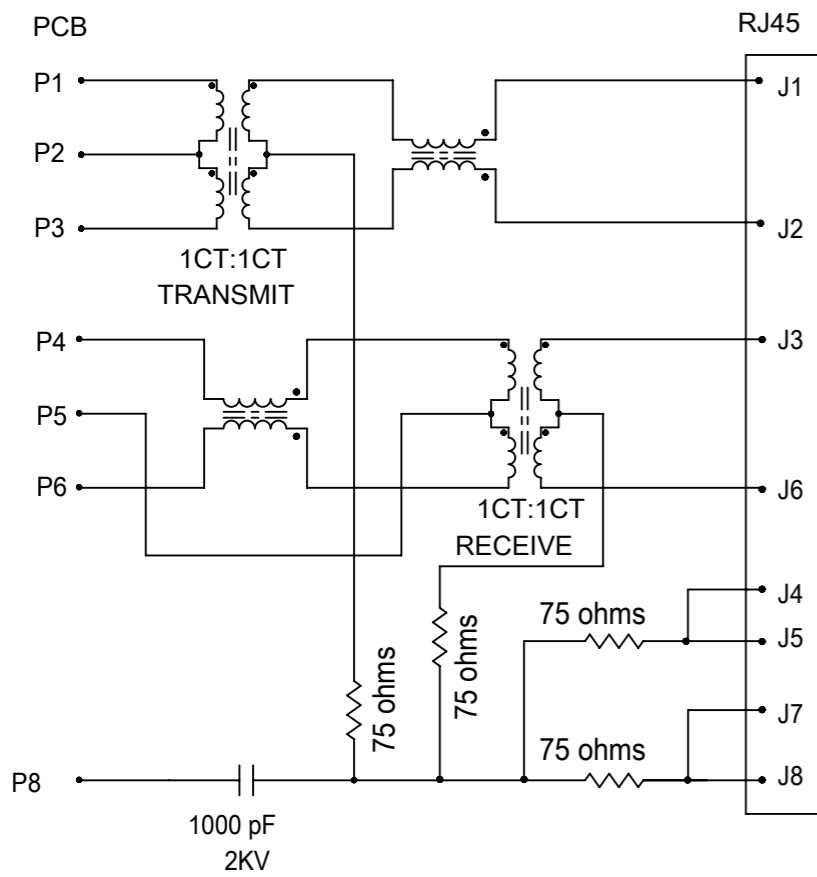
SYMBOLS		THIS DRAWING CONTAINS INFORMATION THAT IS PROPRIETARY TO MOLEX ELECTRONIC TECHNOLOGIES, LLC AND SHOULD NOT BE USED WITHOUT WRITTEN PERMISSION		CURRENT REV DESC:			
▽ = 0	mm	SCALE	1:1	EC NO: 177236			
▽ = 0	GENERAL TOLERANCES (UNLESS SPECIFIED)		DRWN: GB		2018/05/10	MODULAR JACK INTERGRATED MAGNETICS WITH LED	
▽ = 0	ANGULAR TOL ± 3.0°		CHK'D: JKACHLIC		2018/05/25		
▽ = 0	4 PLACES ±		APPR: JKACHLIC		2018/05/25	PRODUCT CUSTOMER DRAWING	
▽ = 0	3 PLACES ±		INITIAL REVISION:				
▽ = 0	2 PLACES ± 0.25		DRWN: FYANG05		2014/06/26	DOCUMENT NUMBER <b>SD-48025-013</b>	
▽ = 0	1 PLACE ± 0.25		APPR: RZHANG		2014/11/06		
▽ = 0	0 PLACES ±		DRAFT WHERE APPLICABLE MUST REMAIN WITHIN DIMENSIONS			DOC TYPE DOC PART REVISION PSD 001 B	
▽ = 0	THIRD ANGLE PROJECTION		DRAWING		SERIES		
		A3-SIZE		48025		CUSTOMER GENERAL MARKET	



- NOTES:
- MATERIAL:  
METAL SHELL: BRASS.  
HOUSING: HIGH TEMP THERMOPLASTIC,UL94-0,COLOR BLACK.  
INSERT: HIGH TEMP THERMOPLASTIC,UL94-0,COLOR BLACK.  
TERMINAL: PHOSPHOR BRONZE.
  - PLATING:  
TERMINAL:  
CONTACT AREA: GOLD(Au), THICKNESS=50 MICROINCH/1.27 MICROMETER.  
SOLDER TAIL: TIN(Sn), THICKNESS=100 MICROINCH MINIMUM/2.54 MICROMETER.  
UNDER PLATE: NICKEL (Ni). THICKNESS=50 MICROINCH/1.27 MICROMETER.  
METAL SHELL:  
SOLDER TAIL:PRE-SOLDER TIN(Sn)  
UNDER PLATE: NICKEL (Ni),(SOLDERING AVAILABLE)  
THICKNESS=50 MICROINCH MINIMUM.  
SURFACE APPEARANCE: BRIGHT.
  - RECOMMENDED PCB THICKNESS: 1.60±0.05
  - PRODUCT SPECIFICATION REFER TO PS-48025-092
  - TEST SUMMARY REFER TO TS-48025-092
  - PACKAGING SPECIFICATION REFER TO PK-48025-092
  - LEAD FREE AND RoHS AND SILICON FREE COMPLIANT PRODUCT

SYMBOLS	THIS DRAWING CONTAINS INFORMATION THAT IS PROPRIETARY TO MOLEX ELECTRONIC TECHNOLOGIES, LLC AND SHOULD NOT BE USED WITHOUT WRITTEN PERMISSION		CURRENT REV DESC:		<b>molex</b>				
	DIMENSION UNITS	SCALE							
▽ = 0	mm	2:1	EC NO: 177236 DRWN: GB 2018/05/10 CHK'D: JKACHLIC 2018/05/25 APPR: JKACHLIC 2018/05/25 INITIAL REVISION: DRWN: DBFAN 2016/09/28 APPR: JKACHLIC 2016/10/13		MODULAR JACK WITH INTERGRATED MAGNETICS WITH LED				
▽ = 0	GENERAL TOLERANCES (UNLESS SPECIFIED)				PRODUCT CUSTOMER DRAWING				
▽ = 0	ANGULAR TOL ± 3.0°				DOCUMENT NUMBER				
▽ = 0	4 PLACES ±				SD-48025-092		DOC TYPE	DOC PART	REVISION
▽ = 0	3 PLACES ±				PSD		001	D	
▽ = 0	2 PLACES ±	0.25			MATERIAL NUMBER		CUSTOMER		
▽ = 0	1 PLACE ±	0.25			48025		GENERAL MARKET		
▽ = 0	0 PLACES ±		SERIES		SHEET NUMBER				
□ = 0	DRAFT WHERE APPLICABLE MUST REMAIN WITHIN DIMENSIONS		THIRD ANGLE PROJECTION	DRAWING	A3-SIZE	48025	48025-1092		





MAGNETIC SCHEMATIC

- TEST NOTES:  
 UNLESS OTHERWISE SPECIFIED, TESTING IS PERFORMED AT 25°C±5°C.
- 1.0 HIPOT(100%):
    - 1.1 FIGURE 8. APPLY 2250VDC FOR 10 SEC FROM PCB PINS(1,2,3,4,5,6,7,8) & LED PINS(9,10,11,12) & SHIELD TO CABLE PINS(1,2,3,4,5,6,7,8) MAX. LEAKAGE CURRENT=2mA
    - 1.2 FIGURE 9. APPLY 500VDC FOR 10 SEC BETWEEN ALL PCB PINS & ALL LED PINS TO SHIELD MAX. LEAKAGE CURRENT=1mA
  - 2.0 OCL:100% 100 KHz. 100 mV. 8mADC BIAS  
 PCB(1-3) & CABLE(3-6)=440µH MIN.
  - 3.0 OPENS AND SHORTS(100%):PER PQ 3.064,000
    - 3.1 VERIFY FOLLOWING CONTINUITY:
      - PCB(2-1)=(2-3)=0.7 OHMS MAXIMUM
      - PCB(4-5)=(6-5)=0.8 OHMS MAXIMUM
      - CABLE(1-2)=(3-6)=1.5 OHMS MAXIMUM
      - CABLE(1-3)=(2-6)=140 TO 160 OHMS
      - CABLE(4-5)=(7-8)=0.5 OHMS MAXIMUM
      - CABLE(1-4)=(1-8)=CABLE(5-8)=140 TO 160 OHMS
      - CABLE(3-5)=(3-7)=140 TO 160 OHMS
    - 3.2 VERIFY OPEN (RESISTANCE>10 MEGOHMS)  
 PCB(3) TO PCB(4), PCB(6) TO PCB(7), PCB(6) TO PCB(8).  
 PCB(7) TO PCB(8); LED(9,10,11,12) TO PCB(1,2,3,4,5,6,7,8).
  - 4.0 CAPACITANCE:(100%) 1KHz,1V  
 PCB(8) TO CABLE(8)=0.001µF±25%
  - 5.0 LED OPERATION:(100%)SEE FIGURE 10  
 SET 9.0 VOLT POWER SUPPLY TO CURRENT LIMIT AT 20 mA MAXIMUM.  
 INSERT MODULE INTO FIXTURE AND VERIFY BOTH LEDS LIGHT AND  
 ARE IN THEIR PROPER LOCATION.
  - 6.0 TURNS RATIO:(100%) TEST AT 100 KHz,100mV  
 PCB(1-3)/CABLE(1-2)=PCB(4-6)/CABLE(3-6)=1.00±2%

LED ELECTRICAL SPECIFICATION

PARAMETER	YELLOW (TYP.)		GREEN (TYP.)		UNITS	TEST CONDITIONS
POWER DISSIPATION	105		105		mW	
REVERSE VOLTAGE	5		5		V	
PEAK WAVELENGTH	590		565		nm	IF=20mA
FORWARD VOLTAGE	2.1	MAX.=2.5	2.2	MAX.=2.5	V	IF=20mA

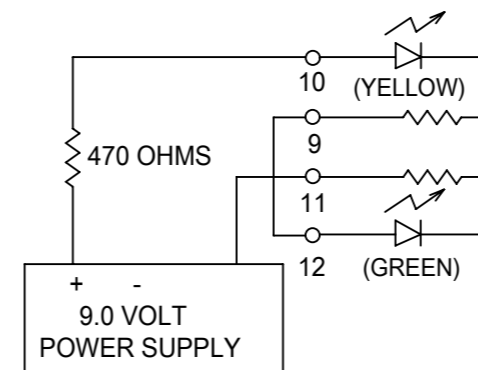


FIGURE 10

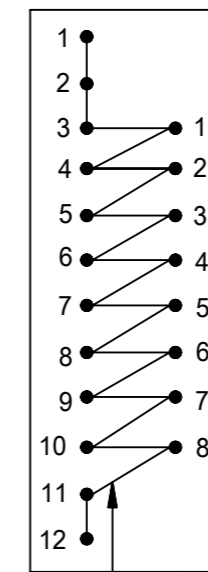


FIGURE 9

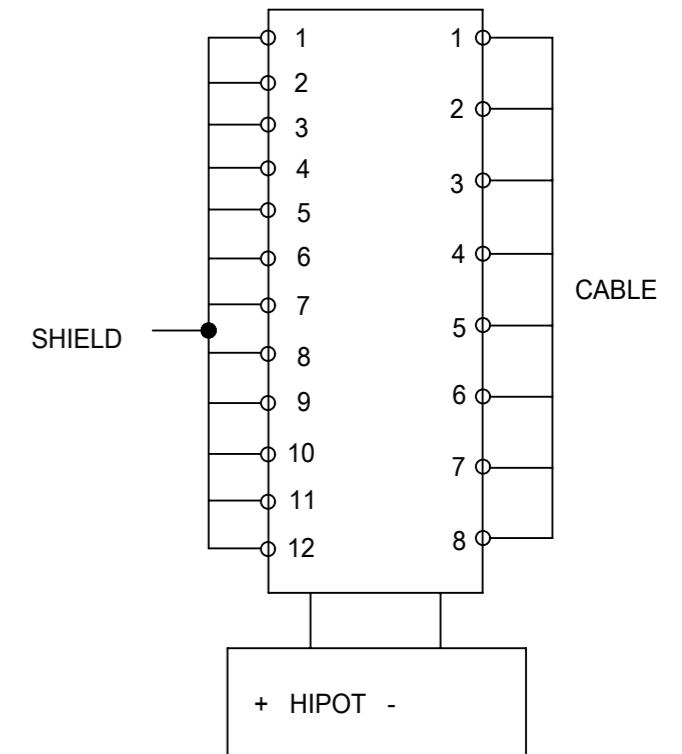
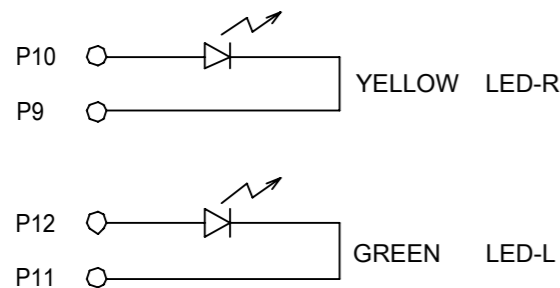


FIGURE 8



LED SCHEMATIC

SYMBOLS		THIS DRAWING CONTAINS INFORMATION THAT IS PROPRIETARY TO MOLEX ELECTRONIC TECHNOLOGIES, LLC AND SHOULD NOT BE USED WITHOUT WRITTEN PERMISSION	
▽ = 0	DIMENSION UNITS	SCALE	CURRENT REV DESC:
▽ = 0	mm	1:1	
▽ = 0	GENERAL TOLERANCES (UNLESS SPECIFIED)		
▽ = 0	ANGULAR TOL	± 3.0°	
▽ = 0	4 PLACES	±	EC NO: 177236
▽ = 0	3 PLACES	±	DRWN: GB 2018/05/10
▽ = 0	2 PLACES	± 0.25	CHK'D: JKACHLIC 2018/05/25
▽ = 0	1 PLACE	± 0.25	APPR: JKACHLIC 2018/05/25
▽ = 0	0 PLACES	±	INITIAL REVISION:
▽ = 0	DRAFT WHERE APPLICABLE MUST REMAIN WITHIN DIMENSIONS		DRWN: DBFAN 2016/09/28
▽ = 0	THIRD ANGLE PROJECTION		APPR: JKACHLIC 2016/10/13
		DRAWING	SERIES
		A3-SIZE	48025
		MATERIAL NUMBER	CUSTOMER
		48025-1092	GENERAL MARKET
		DOCUMENT NUMBER	DOC TYPE DOC PART REVISION
		SD-48025-092	PSD 001 D
		SHEET NUMBER	2 OF 2