



Chipsmall Limited consists of a professional team with an average of over 10 year of expertise in the distribution of electronic components. Based in Hongkong, we have already established firm and mutual-benefit business relationships with customers from,Europe,America and south Asia,supplying obsolete and hard-to-find components to meet their specific needs.

With the principle of “Quality Parts,Customers Priority,Honest Operation,and Considerate Service”,our business mainly focus on the distribution of electronic components. Line cards we deal with include Microchip,ALPS,ROHM,Xilinx,Pulse,ON,Everlight and Freescale. Main products comprise IC,Modules,Potentiometer,IC Socket,Relay,Connector.Our parts cover such applications as commercial,industrial, and automotives areas.

We are looking forward to setting up business relationship with you and hope to provide you with the best service and solution. Let us make a better world for our industry!



Contact us

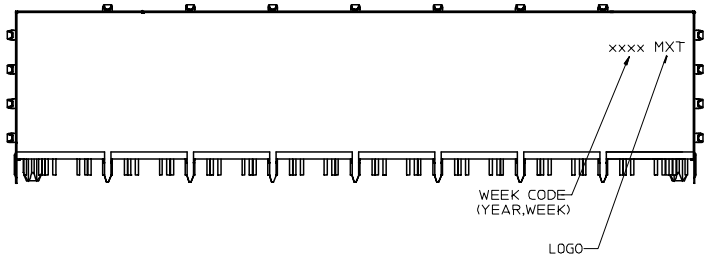
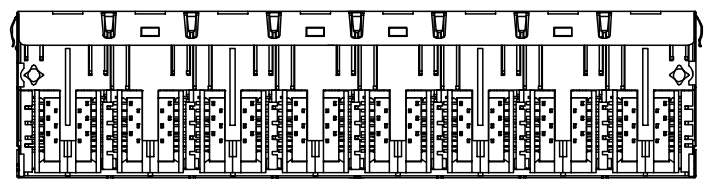
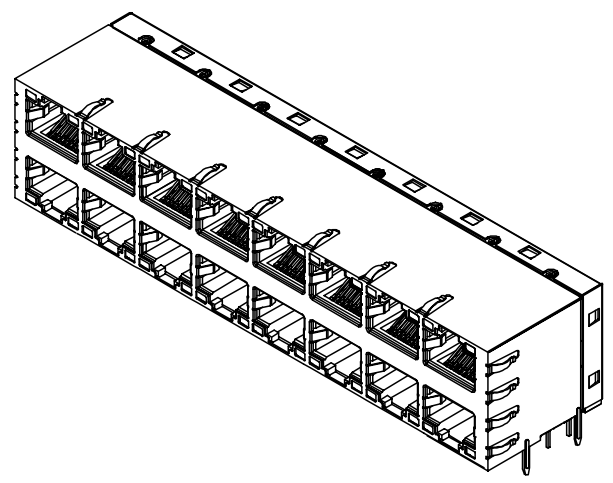
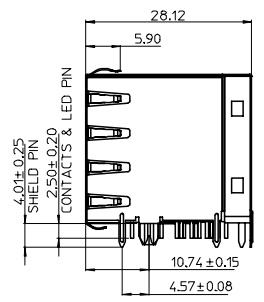
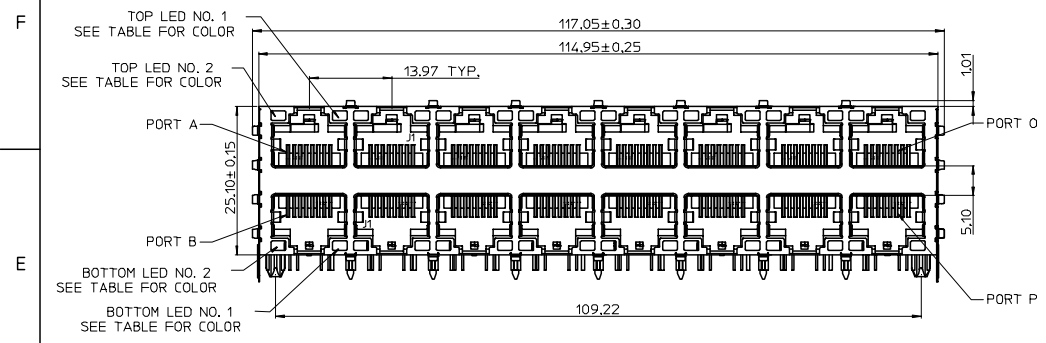
Tel: +86-755-8981 8866 Fax: +86-755-8427 6832

Email & Skype: info@chipsmall.com Web: www.chipsmall.com

Address: A1208, Overseas Decoration Building, #122 Zhenhua RD., Futian, Shenzhen, China



10 9 8 7 6 5 4 3 2 1



B A

9 8 7 6 5 4 3 2 1

RoHS FOR 48033-4900 EC NO: SH2007-0131 DRWN: ALLIN CHKD: APPR: WWSCHANG	2006/10/04 2006/10/04 2006/10/04	QUALITY SYMBOLS ▽=0 ▽=0	GENERAL TOLERANCES (UNLESS SPECIFIED) mm INCH	DIMENSION STYLE MM ONLY	SCALE DESIGN UNITS METRIC	THIRD ANGLE PROJECTION	
	4 PLACES ± --- ± --- 3 PLACES ± --- ± --- 2 PLACES ± 0.25 ± --- 1 PLACE ± 0.25 ± ---	DRAWN BY LINDA CHECKED BY ALLEN LIN APPROVED BY ERICK LAN	DATE 2006/08/08 DATE 2006/08/10 DATE 2006/08/10	TITLE MODULAR JACK STACKED 2X8 RA, 10/100 ETHERNET W/ LEDS, MAGNETICS	MATERIAL NO. 48033-4900	DOCUMENT NO. SD-48033-005	SHEET NO. 1 OF 3
	DRAFT WHERE APPLICABLE MUST REMAIN WITHIN DIMENSIONS	SIZE A3	THIS DRAWING CONTAINS INFORMATION THAT IS PROPRIETARY TO MOLEX INCORPORATED AND SHOULD NOT BE USED WITHOUT WRITTEN PERMISSION				
	REV B	DESCRIPTION					

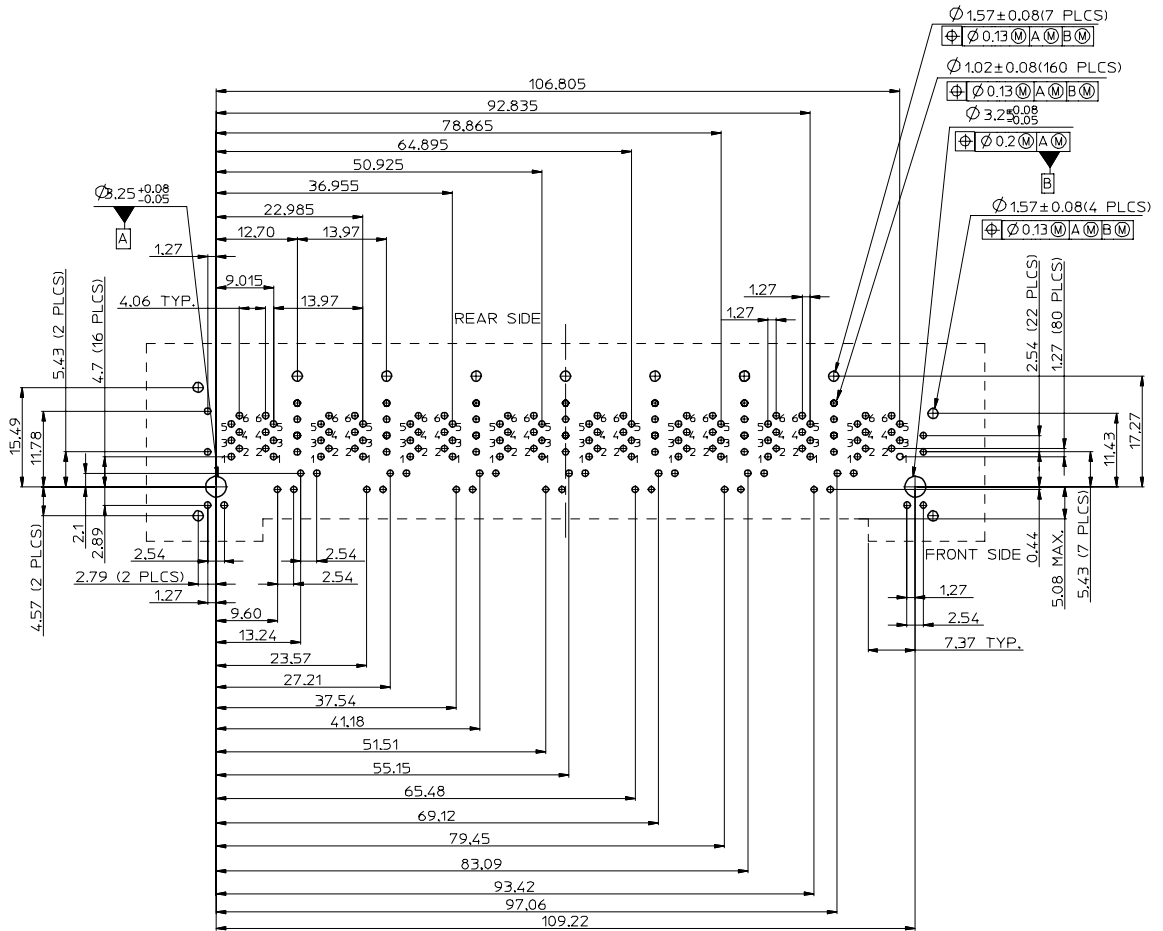
NOTES:
 1.MATERIAL:
 PLASTIC HOUSING: POLYAMIDE, GLASS FIBER FILLED,UL94V-0,COLOR:BLACK
 SHIELD: BRASS.
 BACK SHIELD: BRASS.
 CONTACTS: PHOSPHOR BRONZE.
 LED: DIFFUSED EPOXY LENS,CARBON STEEL LEAD FRAME
 2.PLATING:
 SHIELD:SOLDER TAIL:TN(Sn) THICKNESS-100 MICRONCH MINIMUM UNDER PLATE(NICKEL(Ni) PLATED OVERALL (SOLDERING AVAILABLE).
 TERMINAL CONTACT AREA:GOLD(Au) THICKNESS-50 MICRONCH/127 MICROMETER
 SOLDER TAIL:TN(Sn) THICKNESS-100 MICRONCH MINIMUM UNDER PLATE(NICKEL(Ni) PLATED OVERALL.
 LED:TN/SILVER/NICKEL/COPPER PLATING
 3.MAGNETICS:
 IMPEDANCE:100 OHMS
 TRANSMIT OPEN CIRCUIT INDUCTANCE (OCL):350uH (MIN)@ 100KHZ,0.1 VRMS WITH 8 mA DC BIAS
 TURNS RATIO (CHIP:CABLE):TX:41,RX:14
 PERFORMANCE:
 TRANSMIT BIDIRECTIONAL J3 AND J6
 RECIEVE BIDIRECTIONAL J1 AND J2

FREQUENCY	INSERTION LOSS	RETURN LOSS	CROSSTALK ATTENUATION	COMMON MODE REJECTION RATIO	
				TX	RX
1.0MHZ-15.0MHZ	0.3dB(MAX)	18.0dB(MIN)	35.0dB(MIN)	46.0dB(MIN)	35.0dB(MIN)
15.1MHZ-60.0MHZ	0.6dB(MAX)	16.0dB(MIN)	26.0dB(MIN)	46.0dB(MIN)	35.0dB(MIN)
60.1MHZ-80.0MHZ	1.1dB(MAX)	15.0dB(MIN)	24.0dB(MIN)	42.0dB(MIN)	33.0dB(MIN)
80.1MHZ-100.0MHZ	1.1dB(MAX)	12.0dB(MIN)	24.0dB(MIN)	42.0dB(MIN)	33.0dB(MIN)

DIELECTRIC (ISOLATION VOLTAGE):
 2250 VDC (1mA CUTOFF CURRENT) FOR 60 SECONDS DURATION WITH DECOUPLING CAP
 ALL BRIDGED ON EITHER SIDE OF MAGNETICS PACKAGE FOR RJ-45 CONTACT
 4.RECOMMENDED PCB THICKNESS 2.00mm(.079")
 5.SUGGESTED OPERATING CURRENT FOR THE LED IS 20mA
 6.PRODUCT SPECIFICATION REFER TO PS-48033-002
 7.TEST SUMMARY REFER TO TS-48033-005
 8.PACKAGING SPECIFICATION REFER TO PK-48033-005
 9.LEAD FREE AND RoHS COMPLIANT PRODUCT

LED ELECTRICAL SPECIFICATION

PARAMETER	YELLOW (TYP.)	GREEN (TYP.)	UNITS	TEST CONDITIONS
POWER DISSIPATION	100	100	mW	
REVERSE VOLTAGE	5	5	V	
PEAK WAVELENGTH	585	565	nm	IF=20mA
FORWARD VOLTAGE	2.1 MAX.=2.5	2.1 MAX.=2.5	V	IF=20mA

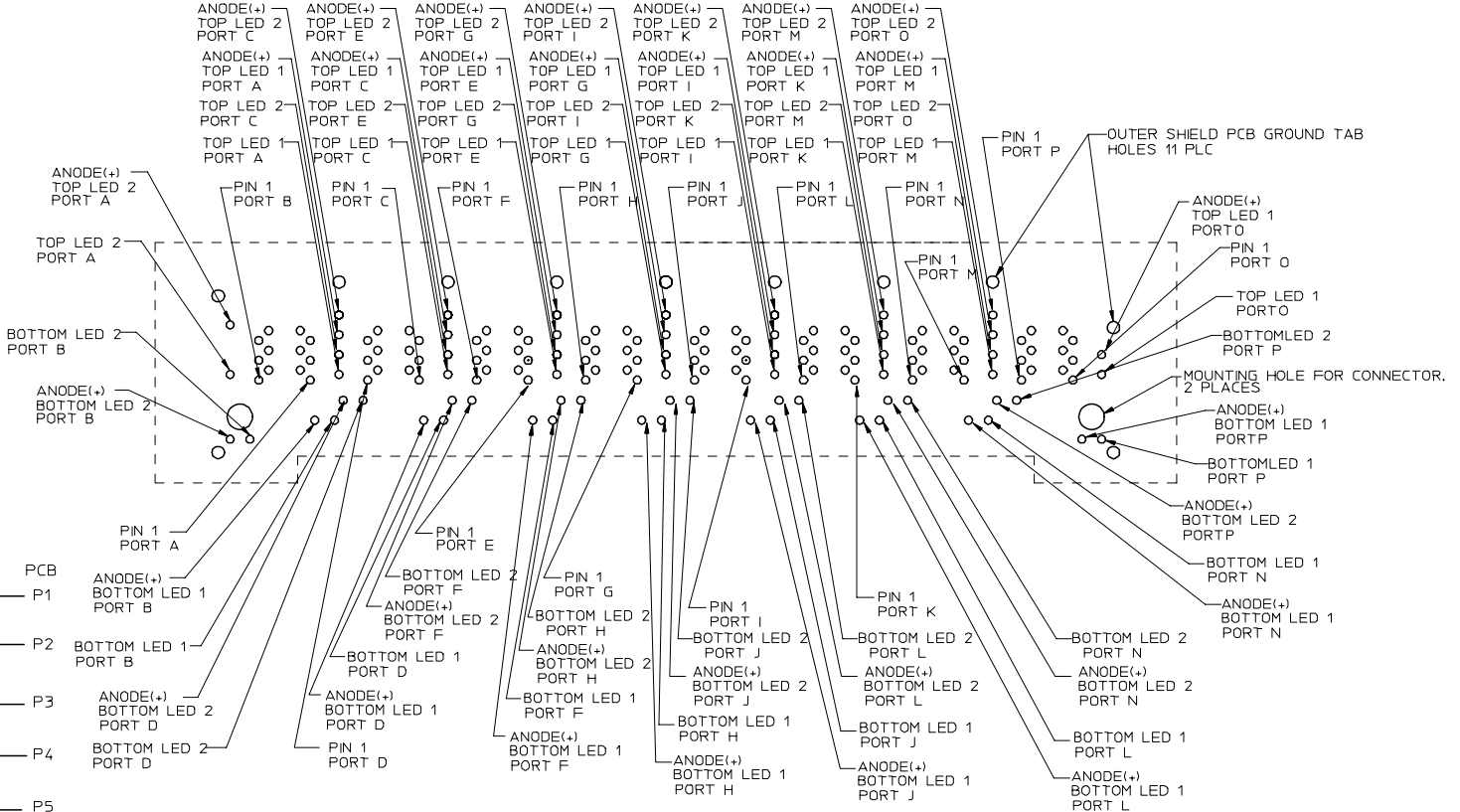
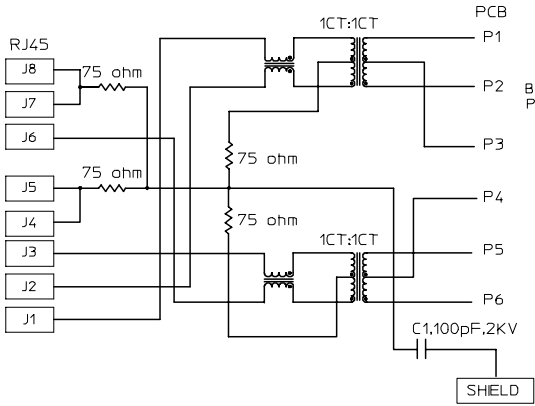
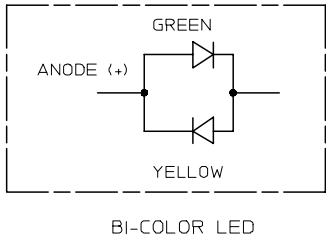


RECOMMENDED PC BOARD LAYOUT (VIEWED FROM COMPONENT SIDE)

SEE SHEET 1 EC NO: SH2007-0131 DRWN:ALLIN 2006/10/04 CHKD: 2006/10/04 APPR:WWSCHANG 2006/10/04	QUALITY SYMBOLS ▽=0 ▽=0	GENERAL TOLERANCES (UNLESS SPECIFIED)		DIMENSION STYLE MM ONLY		SCALE 1:1	DESIGN UNITS METRIC	THIRD ANGLE PROJECTION			
		4 PLACES ± --- ± ---	3 PLACES ± --- ± ---	2 PLACES ± 0.25 ± ---	1 PLACE ± 0.25 ± ---	ANGULAR ± 3°	DRAWN BY LINDA 2006/08/08	DATE 2006/08/08	TITLE MODULAR JACK STACKED 2X8 RA, 10/100 ETHERNET W/ LEDS, MAGNETICS		
		DRAFT WHERE APPLICABLE MUST REMAIN WITHIN DIMENSIONS					APPROVED BY ERICK LAN 2006/08/10	DATE 2006/08/10	MOLEX INCORPORATED		
		MATERIAL NO. 48033-4900					DOCUMENT NO. SD-48033-005		SHEET NO. 2 OF 3		

10 9 8 7 6 5 4 3 2 1

F
E
D
C
B
A



LED HOLE DESIGNATIONS (VIEWED FROM COMPONENT SIDE)

SEE SHEET 1 EC NO: SH2007-0131 DRWN: ALLIN CHKD: APPR: WWSCHANG 2006/10/04 2006/10/04 2006/10/04	QUALITY SYMBOLS ▽=0 ▽=0	GENERAL TOLERANCES (UNLESS SPECIFIED) mm INCH 4 PLACES ± --- ± --- 3 PLACES ± --- ± --- 2 PLACES ± 0.25 ± --- 1 PLACE ± 0.25 ± --- ANGULAR ± 3 °	DIMENSION STYLE MM ONLY DRAWN BY DATE LINDA 2006/08/08 CHECKED BY DATE ALLEN LIN 2006/08/10 APPROVED BY DATE ERICK LAN 2006/08/10	SCALE 1:1 DESIGN UNITS METRIC THIRD ANGLE PROJECTION	TITLE MODULAR JACK STACKED 2X8 RA, 10/100 ETHERNET W/ LEDS, MAGNETICS MOLEX INCORPORATED	SHEET NO. 3 OF 3
	DRAFT WHERE APPLICABLE MUST REMAIN WITHIN DIMENSIONS	MATERIAL NO. 48033-4900	DOCUMENT NO. SD-48033-005	THIS DRAWING CONTAINS INFORMATION THAT IS PROPRIETARY TO MOLEX INCORPORATED AND SHOULD NOT BE USED WITHOUT WRITTEN PERMISSION		
	REV B	DESCRIPTION	SIZE A3	MOLEX		
	SEE SHEET 1	DESCRIPTION	SIZE	MOLEX		

9 8 7 6 5 4 3 2 1