



Chipsmall Limited consists of a professional team with an average of over 10 year of expertise in the distribution of electronic components. Based in Hongkong, we have already established firm and mutual-benefit business relationships with customers from,Europe,America and south Asia,supplying obsolete and hard-to-find components to meet their specific needs.

With the principle of “Quality Parts,Customers Priority,Honest Operation,and Considerate Service”,our business mainly focus on the distribution of electronic components. Line cards we deal with include Microchip,ALPS,ROHM,Xilinx,Pulse,ON,Everlight and Freescale. Main products comprise IC,Modules,Potentiometer,IC Socket,Relay,Connector.Our parts cover such applications as commercial,industrial, and automotives areas.

We are looking forward to setting up business relationship with you and hope to provide you with the best service and solution. Let us make a better world for our industry!



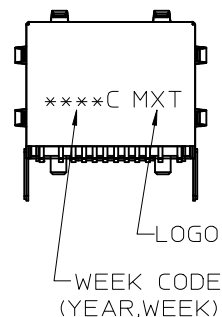
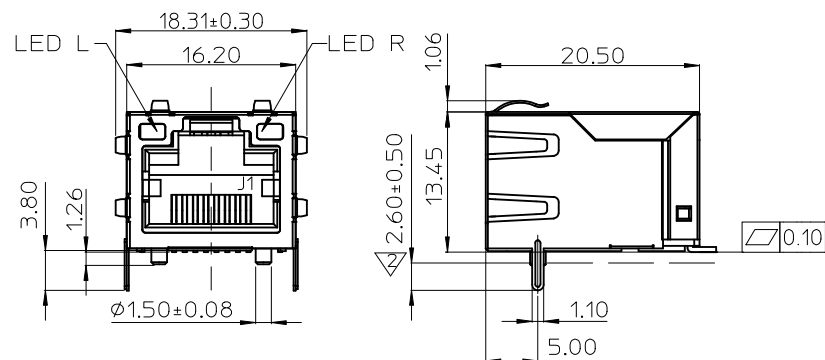
## Contact us

Tel: +86-755-8981 8866 Fax: +86-755-8427 6832

Email & Skype: [info@chipsmall.com](mailto:info@chipsmall.com) Web: [www.chipsmall.com](http://www.chipsmall.com)

Address: A1208, Overseas Decoration Building, #122 Zhenhua RD., Futian, Shenzhen, China





#### NOTES:

##### 1.MATERIAL:

METAL SHELL: BRASS  
HOUSING: HIGH TEMP THERMOPLASTIC,  
UL94-0,COLOR:BLACK  
INSERT: HIGH TEMP THERMOPLASTIC,  
UL94-0,COLOR:BLACK  
TERMINAL: PHOSPHOR BRONZE

##### PLATING:

##### TERMINAL:

CONTACT AREA: SEE PART NUMBER LEGEED  
SOLDER TAIL: TIN(Sn), THICKNESS=100 MICROINCH MINIMUM.  
UNDER PLATE: NICKEL (Ni).

##### METAL SHELL:

SOLDER TAIL: TIN(Sn), THICKNESS=100 MICROINCH MINIMUM.  
UNDER PLATE: NICKEL (Ni),(SOLDERING AVAILABLE)

SURFACE APPEARANCE: BRIGHT.

3.FOR IR REFLOW PROCESS, TIN PLATED AREA.

4.RECOMMENDED PCB THICKNESS: 1.60±0.05

5.PRODUCT SPECIFICATION REFER TO PS-48074-002

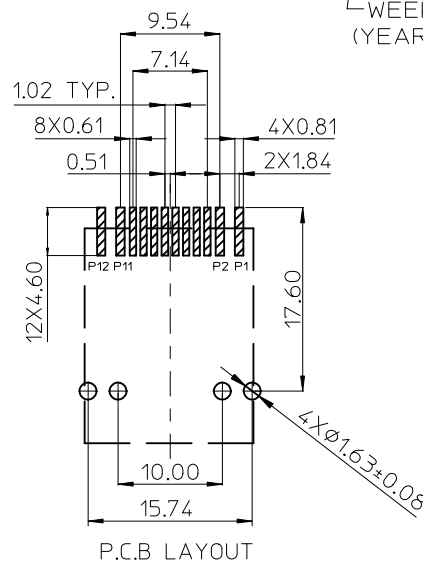
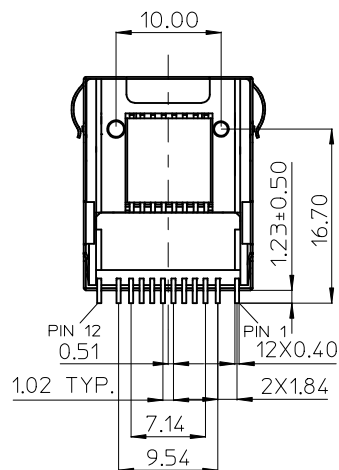
6.TEST SUMMARY REFER TO TS-48074-002

7.PACKAGING SPECIFICATION REFER TO PK-48074-001

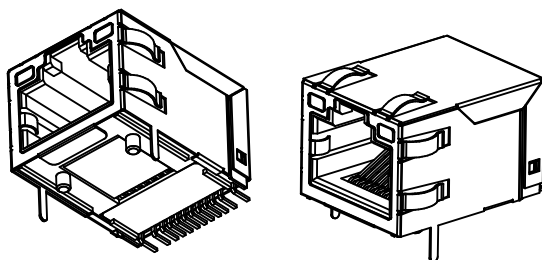
8.RETENTION FORCE: 30 lbf.

9.COPLANARITY: 0.10 MAX

10.LEAD FREE AND ROHS COMPLIANT PRODUCT



P/N	CONTACT PLATING
48074-9001	30 MICROINCH
48074-9004	GOLD FLASH
48074-9005	15 MICROINCH



ADD NEW P/N  
EC NO: SH2012-0218  
DRAWN: RL 109  
CHKD:  
APPR: RZHUANG  
REV

QUALITY SYMBOLS  
F=0  
F=1  
F=0

#### GENERAL TOLERANCES (UNLESS SPECIFIED)

	mm	INCH
4 PLACES	± ---	± ---
3 PLACES	± ---	± ---
2 PLACES	± 0.25	± ---
1 PLACE	± 0.25	± ---
ANGULAR	± 3 °	

DRAFT WHERE APPLICABLE  
MUST REMAIN  
WITHIN DIMENSIONS

#### DIMENSION STYLE MM ONLY

DRAWN BY: RL 109  
DATE: 2012/01/11  
CHECKED BY:  
DATE:  
APPROVED BY:  
DATE:

MATERIAL NO.  
SEE TABLE

SIZE: A3  
THIS DRAWING CONTAINS INFORMATION THAT IS PROPRIETARY TO MOLEX INCORPORATED AND SHOULD NOT BE USED WITHOUT WRITTEN PERMISSION

SCALE  
1:1

DESIGN UNITS  
METRIC

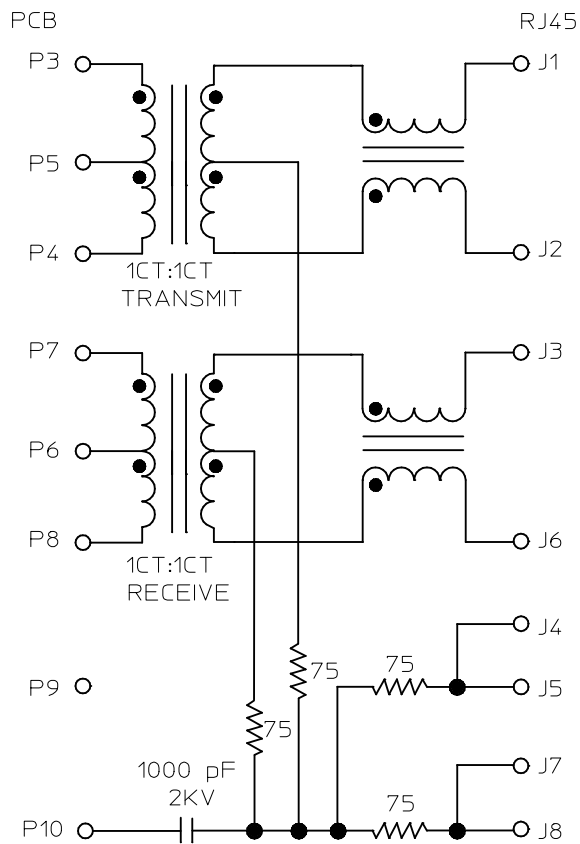
THIRD ANGLE  
PROJECTION

TITLE  
MODULAR JACK WITH LED &  
INTEGRATED MAGNETICS  
SMT TYPE

MOLEX MOLEX INCORPORATED

DOCUMENT NO.  
SD-48074-002

SHEET NO.  
1 OF 2

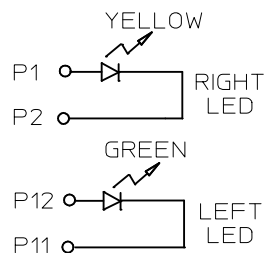


MAGNETIC SCHEMATIC

MAGNETIC ELECTRICAL SPECIFICATION

PARAMETER	SPECIFICATIONS		
INSERTION LOSS	100 KHz		
	1.0 dB MAX.		
RETURN LOSS (Z OUT=100 OHM±15%)	1-10 MHz	30 MHz	60-80 MHz
	20 dB MIN	16 dB MIN	12 dB MIN
CROSSTALK	1-10 MHz	30-60 MHz	60-100 MHz
	40 dB MIN	35 dB MIN	30 dB MIN
COMMON MODE REJECTION RATIO	1-50 MHz	50-130 MHz	
	30 dB MIN	20 dB MIN	
HIPOT	@60 Hz, 1 MIN		
	1500 Vrms		

NOTE:f IS FREQUENCY IN MHZ.



LED SCHEMATIC

LED ELECTRICAL SPECIFICATION

PARAMETER	YELLOW (TYP.)	GREEN (TYP.)	UNITS	TEST CONDITIONS
POWER DISSIPATION	105	105	mW	
REVERSE VOLTAGE	5	5	V	
PEAK WAVELENGTH	590	565	nm	IF=20mA
FORWARD VOLTAGE	2.1	MAX.=2.5	2.2	MAX.=2.5
		V		IF=20mA

SEE SHEET 1 EC NO: SH2012-0218 DRAWN:RL109 CHKD: APPR:RZHANG	2012/01/11  2012/01/31	DESCRIPTION	QUALITY SYMBOLS  $F_A=0$ $F_G=0$ $F_P=0$	GENERAL TOLERANCES (UNLESS SPECIFIED)		DIMENSION STYLE MM ONLY		SCALE 1:1	DESIGN UNITS METRIC	 THIRD ANGLE PROJECTION		
					mm	INCH	DRAWN BY RL109	DATE 2012/01/11	TITLE MODULAR JACK WITH LED & INTEGRATED MAGNETICS SMT TYPE			
				4 PLACES	± ---	± ---	CHECKED BY	DATE				
				3 PLACES	± ---	± ---						
				2 PLACES	± 0.25	± ---	APPROVED BY		DATE		 MOLEX INCORPORATED	
				1 PLACE	± 0.25	± ---						
				ANGULAR ± 3 °		MATERIAL NO.		DOCUMENT NO.			SHEET NO.	
DRAFT WHERE APPLICABLE MUST REMAIN WITHIN DIMENSIONS		SEE TABLE		SD-48074-002		2 OF 2						
C	REV					SIZE A3	THIS DRAWING CONTAINS INFORMATION THAT IS PROPRIETARY TO MOLEX INCORPORATED AND SHOULD NOT BE USED WITHOUT WRITTEN PERMISSION					