



Chipsmall Limited consists of a professional team with an average of over 10 year of expertise in the distribution of electronic components. Based in Hongkong, we have already established firm and mutual-benefit business relationships with customers from,Europe,America and south Asia,supplying obsolete and hard-to-find components to meet their specific needs.

With the principle of “Quality Parts,Customers Priority,Honest Operation,and Considerate Service”,our business mainly focus on the distribution of electronic components. Line cards we deal with include Microchip,ALPS,ROHM,Xilinx,Pulse,ON,Everlight and Freescale. Main products comprise IC,Modules,Potentiometer,IC Socket,Relay,Connector.Our parts cover such applications as commercial,industrial, and automotives areas.

We are looking forward to setting up business relationship with you and hope to provide you with the best service and solution. Let us make a better world for our industry!



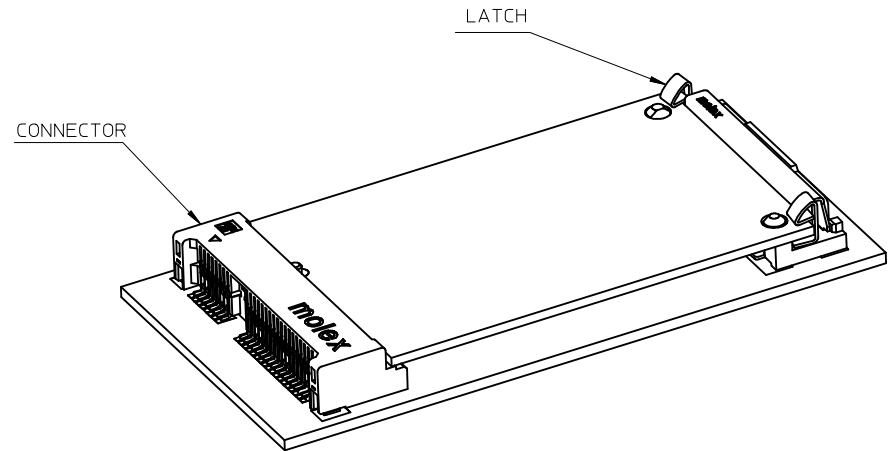
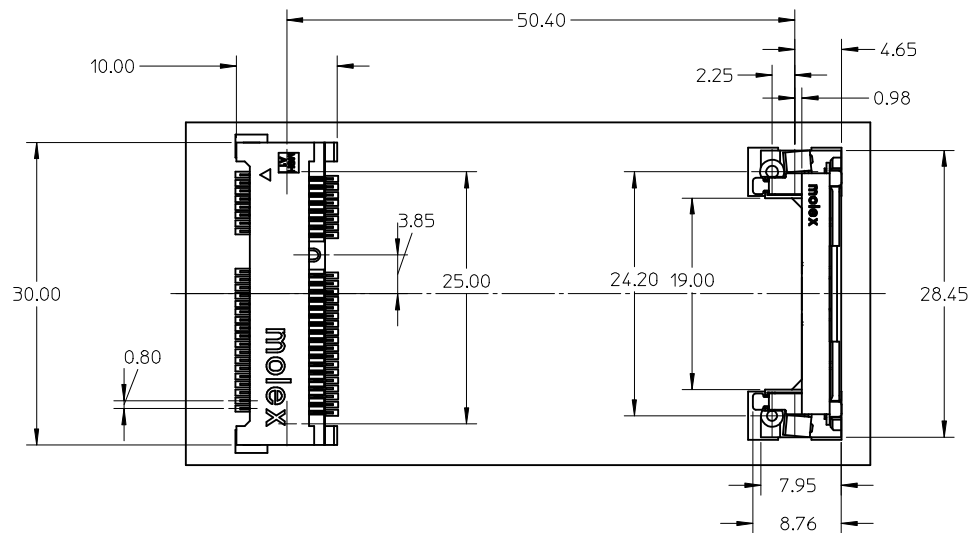
## Contact us

Tel: +86-755-8981 8866 Fax: +86-755-8427 6832

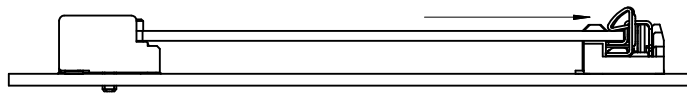
Email & Skype: [info@chipsmall.com](mailto:info@chipsmall.com) Web: [www.chipsmall.com](http://www.chipsmall.com)

Address: A1208, Overseas Decoration Building, #122 Zhenhua RD., Futian, Shenzhen, China





PUSH LATCH TO RELEASE MODULE




QUALITY SYMBOLS	
	=0
	=0

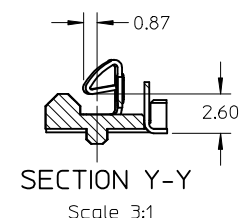
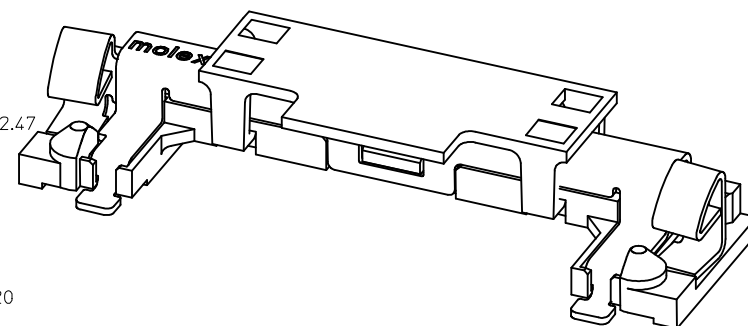
SEE SHEET 2	EC NO: S2015-0122
	DRWN:SKANG
	CHKD:BOKOK
	APPR:SHLENI
REV	DESCRIPTION
1	

QUALITY SYMBOLS	
	=0
	=0
	=0


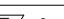
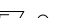
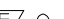
GENERAL TOLERANCES (UNLESS SPECIFIED)		
	mm	INCH
4 PLACES	± ---	± ---
3 PLACES	± ---	± ---
2 PLACES	± 0.25	± ---
1 PLACE	± 0.25	± ---
ANGULAR ± 3 °		
DRAFT WHERE APPLICABLE MUST REMAIN WITHIN DIMENSIONS		

DIMENSION STYLE	
MM ONLY	
DRAWN BY	DATE
DAVID HU	2005/11/10
CHECKED BY	DATE
HARVEY	2005/11/10
APPROVED BY	DATE
NAGESHKN	2010/04/07
MATERIAL NO.	
480994000	
SIZE	
A3	

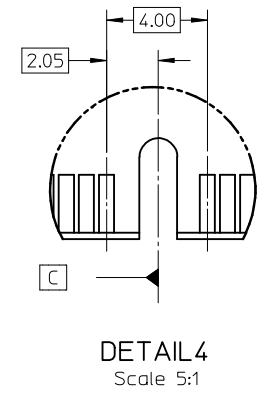
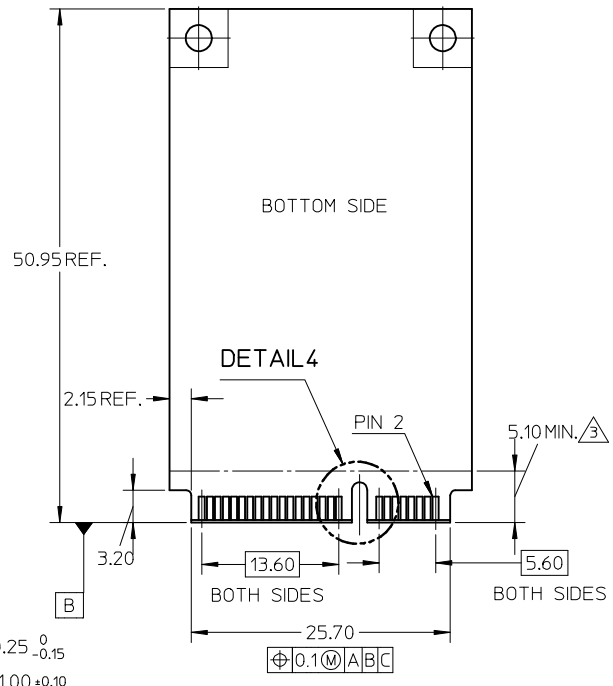
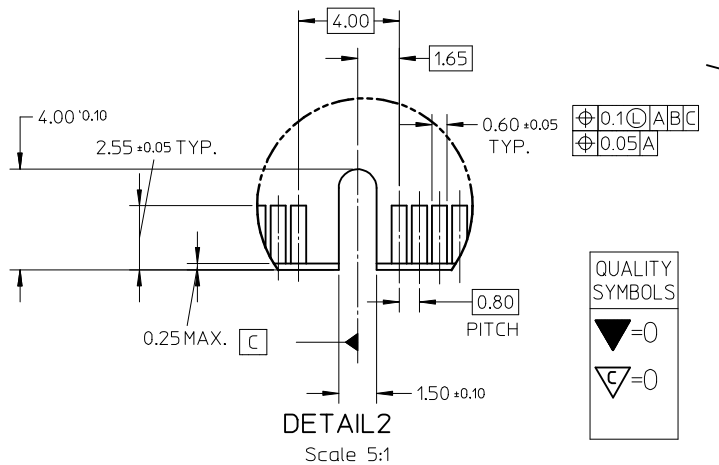
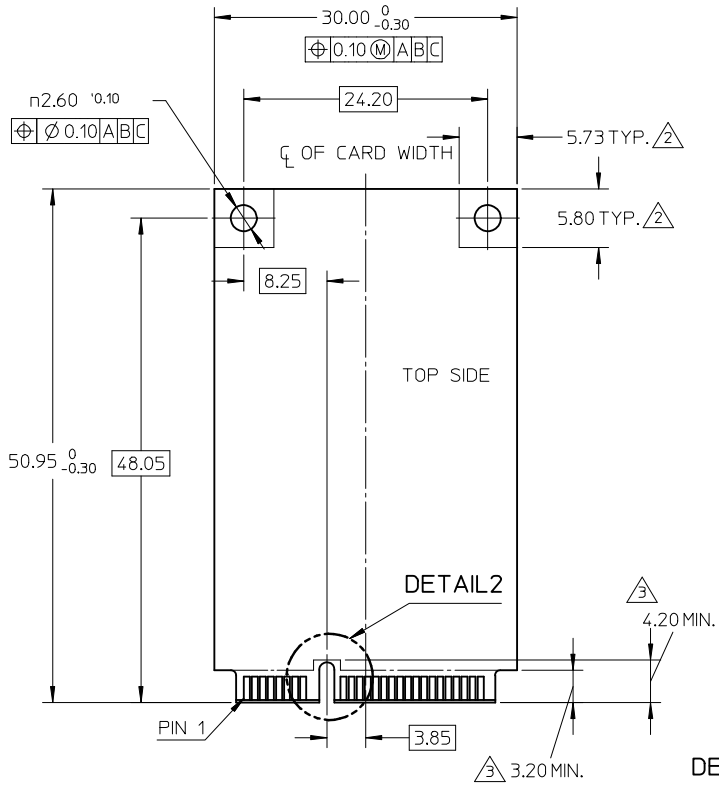
SCALE NTS	DESIGN UNITS METRIC		THIRD ANGLE PROJECTION
TITLE			
LATCH FOR MINIPCI-E 4.0H 0.8MM PITCH 52 CIRCUIT WITH COVER LEAD-FREE			
	MOLEX INCORPORATED		
DOCUMENT NO. SD-48099-400			SHEET NO. 1 OF 3
THIS DRAWING CONTAINS INFORMATION THAT IS PROPRIETARY TO MOLEX SHOULD NOT BE USED WITHOUT WRITTEN PERMISSION			



- NOTES:
1. THIS LATCH USES WITH MINIPCI EXPRESS CONN.
  2. HOUSING:PA46  
GLASS FILLED,COLOR:BLACK UL94V-0  
METAL SHELL:STAINLESS STEEL,THICKNESS:0.3MM  
BEAM:STAINLESS STEEL,THICKNESS:0.3MM
  3. FINISH:GOLD FLASH PLATED IN SOLDER AREA.
  4. DATE CODE:YY:YEAR MM:MONTH DD:DATE
  5. THE MODULE CARD REFERS TO MINI PCI EXPRESS CARD  
ELECTROMECHANICAL SPECIFICATION.
  6. FOR PICK AND PLACE AREA.
  7. MATCHED CONNECTOR:67910-0002,67910-1002
  8. DATUM D IS THE TOP SURFACE OF PCB.
  9. PART 48099\*\*\*\* COMPLIANT TO ROHS DIRECTIVE 2002/95/EC  
AND ELV DIRECTIVE 2000/53/EC.

[C6] CORRECT VIEW EC NO: S2015-0122 DRWNS:SKANG CHKD:BOKANG APPR:SHLENI 2014/08/07 2014/08/26 2014/08/26	DESCRIPTION REV	QUALITY SYMBOLS	GENERAL TOLERANCES (UNLESS SPECIFIED)			DIMENSION STYLE MM ONLY		SCALE NTS	DESIGN UNITS METRIC	 THIRD ANGLE PROJECTION	
		 =0	4 PLACES	± ---	± ---	DRAWN BY DAVID HU	DATE 2005/11/10	TITLE LATCH FOR MINIPCI-E 4.0H 0.8MM PITCH 52 CIRCUIT WITH COVER LEAD-FREE			
		 =0	3 PLACES	± ---	± ---	CHECKED BY HARVEY	DATE 2005/11/10				
		 =0	2 PLACES	± 0.25	± ---	APPROVED BY NAGESHKN	DATE 2010/04/07				
		1 PLACE			± 0.25	± ---	MATERIAL NO. 480994000		DOCUMENT NO. SD-48099-400		SHEET NO. 2 OF 3
ANGULAR ± 3 °			DRAFT WHERE APPLICABLE MUST REMAIN WITHIN DIMENSIONS			THIS DRAWING CONTAINS INFORMATION THAT IS PROPRIETARY TO MOLEX INCORPORATED AND SHOULD NOT BE USED WITHOUT WRITTEN PERMISSION					

NOTES;  
1. PIN NUMBERING REFERENCE:  
ODD PINS-TOP SIDE  
EVEN PINS-BOTTOM SIDE  
2. COMPONENT AND ROUTING(ALL LAYERS)  
KEEP OUT AREA FOR HOLD DOWN SOLUTIONS  
3. COMPONENT KEEP OUT AREA FOR CONNECTOR



SEE SHEET 2		QUALITY SYMBOLS		GENERAL TOLERANCES (UNLESS SPECIFIED)		DIMENSION STYLE		SCALE		DESIGN UNITS		THIRD ANGLE PROJECTION	
EC NO: S2015-0122		F <sub>A</sub> =0		mm		MM ONLY		NTS		METRIC		⊙	
DRWN:SKANG		F <sub>G</sub> =0		INCH		DRAWN BY		DATE		TITLE		LATCH FOR MINIPCI-E 4.0H	
CHKD:BOKOK		F <sub>P</sub> =0		4 PLACES ± --- ± ---		CHECKED BY		DATE		DAVID HU		0.8MM PITCH 52 CIRCUIT	
APPR:SHLENI		ANGULAR ± 3 °		3 PLACES ± --- ± ---		APPROVED BY		DATE		HARVEY		WITH COVER LEAD-FREE	
REV		DRAFT WHERE APPLICABLE MUST REMAIN WITHIN DIMENSIONS		2 PLACES ± 0.25 ± ---		MATERIAL NO.		DOCUMENT NO.		NAGESHKN		MOLEX INCORPORATED	
1				1 PLACE ± 0.25 ± ---		480994000		SD-48099-400		2010/04/07		3 OF 3	
						THIS DRAWING CONTAINS INFORMATION THAT IS PROPRIETARY TO MOLEX INCORPORATED AND SHOULD NOT BE USED WITHOUT WRITTEN PERMISSION							