



Chipsmall Limited consists of a professional team with an average of over 10 year of expertise in the distribution of electronic components. Based in Hongkong, we have already established firm and mutual-benefit business relationships with customers from,Europe,America and south Asia,supplying obsolete and hard-to-find components to meet their specific needs.

With the principle of “Quality Parts,Customers Priority,Honest Operation,and Considerate Service”,our business mainly focus on the distribution of electronic components. Line cards we deal with include Microchip,ALPS,ROHM,Xilinx,Pulse,ON,Everlight and Freescale. Main products comprise IC,Modules,Potentiometer,IC Socket,Relay,Connector.Our parts cover such applications as commercial,industrial, and automotives areas.

We are looking forward to setting up business relationship with you and hope to provide you with the best service and solution. Let us make a better world for our industry!



## Contact us

Tel: +86-755-8981 8866 Fax: +86-755-8427 6832

Email & Skype: [info@chipsmall.com](mailto:info@chipsmall.com) Web: [www.chipsmall.com](http://www.chipsmall.com)

Address: A1208, Overseas Decoration Building, #122 Zhenhua RD., Futian, Shenzhen, China



10 9 8 7 6 5 4 3 2 1

F

E

D

C

B

A

F

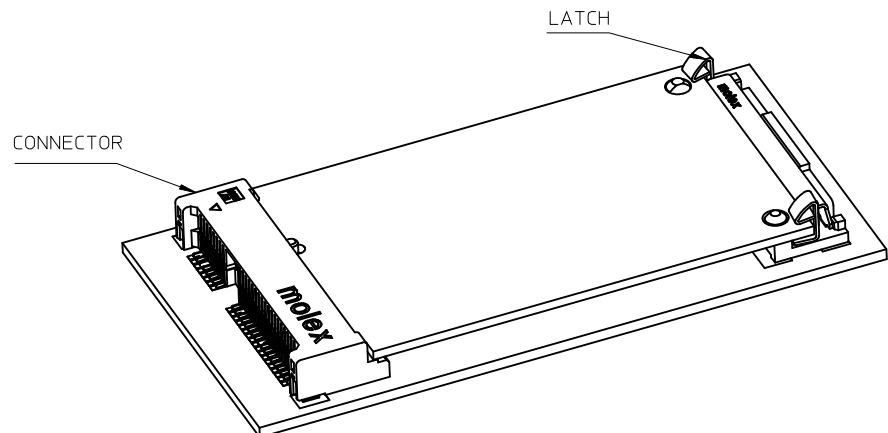
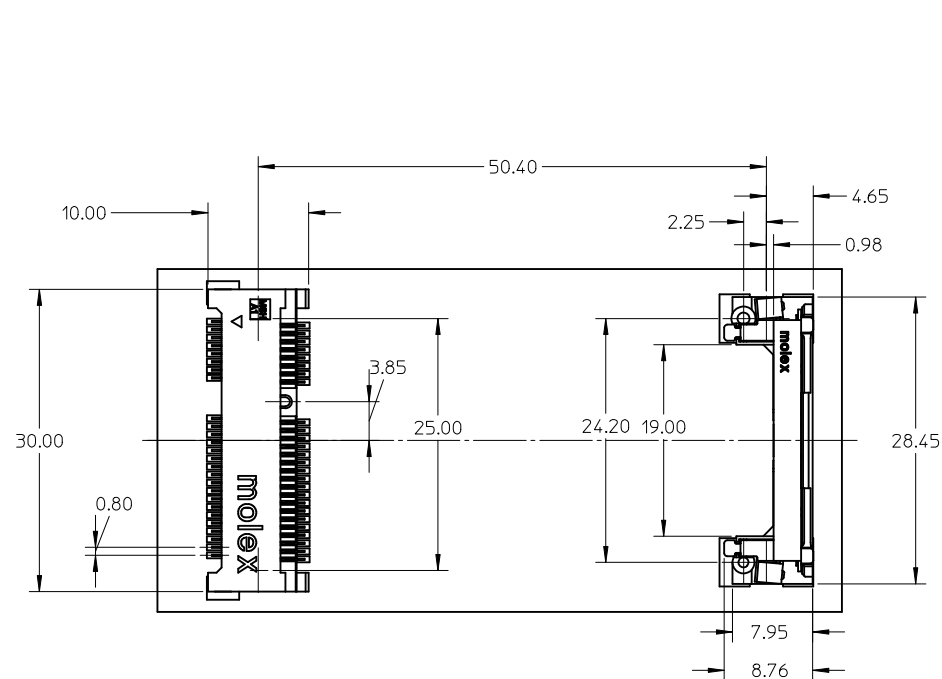
E

D

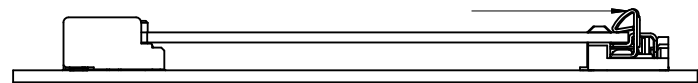
C

B

A



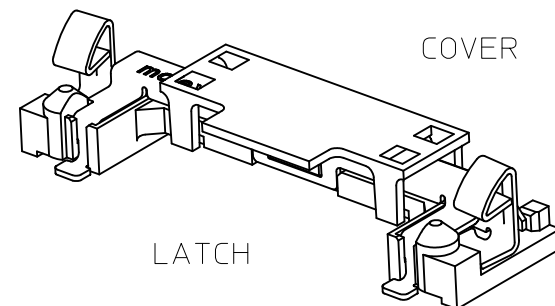
PUSH LATCH TO RELEASE MODULE



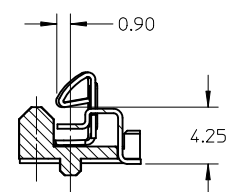
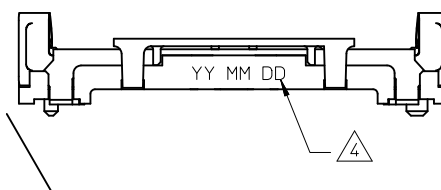
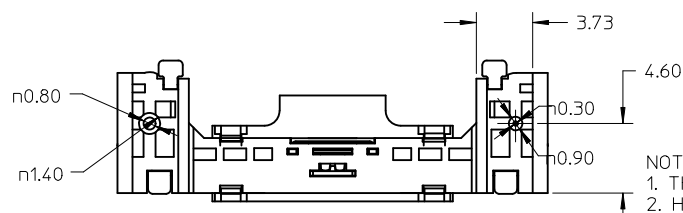
QUALITY SYMBOLS	
	=0
	=0

REVISED EC NO: S2010-0835 DRWN: CWANG25 CHKD: HARVEY APPR: NAGESHKN		2010/04/05 2005/12/14 2010/04/07		DESCRIPTION REV	QUALITY SYMBOLS	GENERAL TOLERANCES (UNLESS SPECIFIED)			DIMENSION STYLE MM ONLY		SCALE NTS	DESIGN UNITS METRIC	THIRD ANGLE PROJECTION	
DRAFT WHERE APPLICABLE MUST REMAIN WITHIN DIMENSIONS		mm			INCH	DRAWN BY DAVID HU		DATE 2005/12/14		TITLE LATCH FOR MINIPCI-E 0.8MM PITCH 52 CIRCUIT LEAD-FREE  MOLEX INCORPORATED				
		4 PLACES ± ---			± ---	CHECKED BY HARVEY		DATE 2005/12/14						
		3 PLACES ± ---			± ---	APPROVED BY NAGESHKN		DATE 2010/04/07						
		2 PLACES ± 0.25			± ---	MATERIAL NO. 480995701		DOCUMENT NO. SD-48099-006		SHEET NO. 1 OF 3				
		1 PLACE ± 0.25			± ---	SIZE A3		THIS DRAWING CONTAINS INFORMATION THAT IS PROPRIETARY TO MOLEX INCORPORATED AND SHOULD NOT BE USED WITHOUT WRITTEN PERMISSION						

9 8 7 6 5 4 3 2 1




## RECOMMENDED PCB LAYOUT

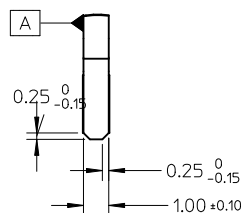
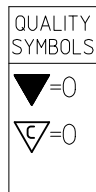
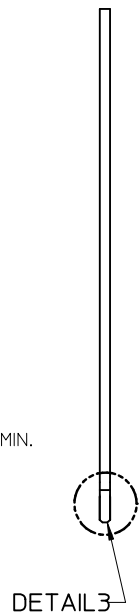


SECTION Y-Y

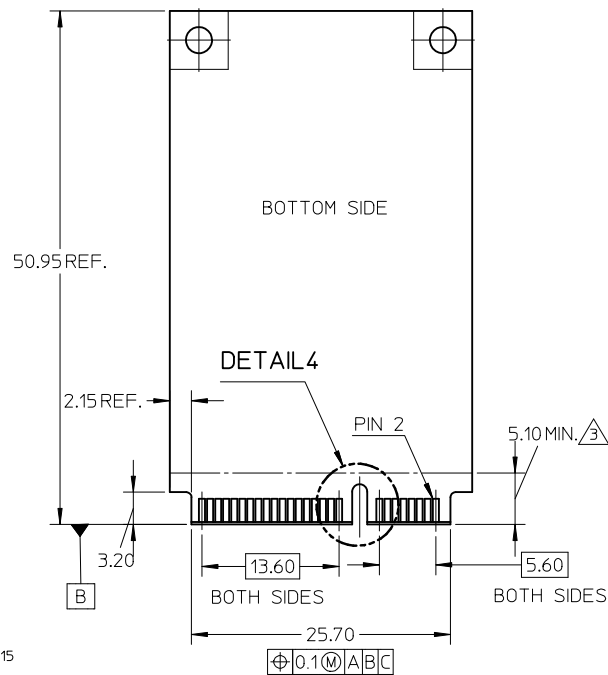
Scale 3:1

- NOTES:
1. THIS LATCH USES WITH MINIPCI EXPRESS CONN.
  2. HOUSING:PA46 GLASS FILLED,COLOR:BLACK UL94V-0  
METAL SHELL:STAINLESS STEEL,THICKNESS:0.3MM  
BEAM:STAINLESS STEEL,THICKNESS:0.3MM
  3. FINISH:GOLD FLASH PLATED IN SOLDER AREA.
  4. DATE CODE:YY:YEAR MM:MONTH DD:DATE
  5. THE MOUDLE CARD REFERS TO MINI PCI EXPRESS CARD  
ELECTROMECHANICAL SPECIFICATION.
  6. MATCHED CONNECTOR:67910 SERIES.
  7. FOR PICK AND PLACE AREA.
  8. PART 48099-5701 COMPLIANT TO ROHS DIRECTIVE 2002/95/EC  
AND ELV DIRECTIVE 2000/53/EC.

REVISED EC NO: S2010-0835 DRWN: CWANG25 CHK'D: HARVEY APPR: NAGESHKN	2010/04/05 2005/12/14 2010/04/07	DESCRIPTION	QUALITY SYMBOLS	GENERAL TOLERANCES (UNLESS SPECIFIED)		DIMENSION STYLE MM ONLY		SCALE NTS	DESIGN UNITS METRIC	 THIRD ANGLE PROJECTION		
					mm	INCH	DRAWN BY DAVID HU	DATE 2005/12/14	TITLE LATCH FOR MINIPCI-E 0.8MM PITCH 52 CIRCUIT LEAD-FREE			
				4 PLACES	± ---	± ---	CHECKED BY HARVEY	DATE 2005/12/14				
				3 PLACES	± ---	± ---	APPROVED BY NAGESHKN	DATE 2010/04/07				
				2 PLACES	± 0.25	± ---	MATERIAL NO. 480995701		DOCUMENT NO. SD-48099-006		SHEET NO. 2 OF 3	
1 PLACE	± 0.25	± ---	DRAFT WHERE APPLICABLE MUST REMAIN WITHIN DIMENSIONS		SIZE A3		THIS DRAWING CONTAINS INFORMATION THAT IS PROPRIETARY TO MOLEX INCORPORATED AND SHOULD NOT BE USED WITHOUT WRITTEN PERMISSION					
				ANGULAR ± 3 °								



DETAIL 3  
Scale 5:1



DETAIL 4  
Scale 5:1

NOTES:

1. PIN NUMBERING REFERENCE:  
ODD PINS-TOP SIDE  
EVEN PINS-BOTTOM SIDE
2. COMPONENT AND ROUTING(ALL LAYERS)  
KEEP OUT AREA FOR HOLD DOWN SOLUTIONS
3. COMPONENT KEEP OUT AREA FOR CONNECTOR

REVISED EC NO: S2010-0835 DRWN: CWANG25 CHK'D: HARVEY APPR: NAGESHKN	2010/04/05 2005/12/14 2010/04/07	DESCRIPTION	QUALITY SYMBOLS	GENERAL TOLERANCES (UNLESS SPECIFIED)		DIMENSION STYLE MM ONLY		SCALE NTS	DESIGN UNITS METRIC	THIRD ANGLE PROJECTION	
				mm	INCH	DRAWN BY DAVID HU	DATE 2005/12/14	TITLE LATCH FOR MINIPCI-E 0.8MM PITCH 52 CIRCUIT LEAD-FREE			
				4 PLACES ± ---	± ---	CHECKED BY HARVEY	DATE 2005/12/14				
				3 PLACES ± ---	± ---	APPROVED BY NAGESHKN	DATE 2010/04/07	MOLEX INCORPORATED			
				2 PLACES ± 0.25	± ---	MATERIAL NO. 480995701					
				1 PLACE ± 0.25	± ---	DRAFT WHERE APPLICABLE MUST REMAIN WITHIN DIMENSIONS		THIS DRAWING CONTAINS INFORMATION THAT IS PROPRIETARY TO MOLEX INCORPORATED AND SHOULD NOT BE USED WITHOUT WRITTEN PERMISSION			