



Chipsmall Limited consists of a professional team with an average of over 10 year of expertise in the distribution of electronic components. Based in Hongkong, we have already established firm and mutual-benefit business relationships with customers from,Europe,America and south Asia,supplying obsolete and hard-to-find components to meet their specific needs.

With the principle of “Quality Parts,Customers Priority,Honest Operation,and Considerate Service”,our business mainly focus on the distribution of electronic components. Line cards we deal with include Microchip,ALPS,ROHM,Xilinx,Pulse,ON,Everlight and Freescale. Main products comprise IC,Modules,Potentiometer,IC Socket,Relay,Connector.Our parts cover such applications as commercial,industrial, and automotives areas.

We are looking forward to setting up business relationship with you and hope to provide you with the best service and solution. Let us make a better world for our industry!



Contact us

Tel: +86-755-8981 8866 Fax: +86-755-8427 6832

Email & Skype: info@chipsmall.com Web: www.chipsmall.com

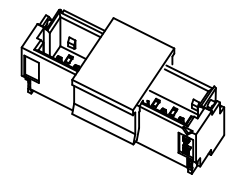
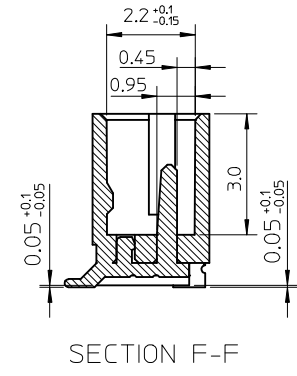
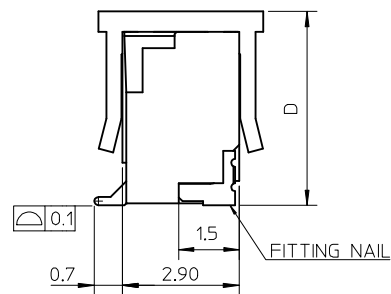
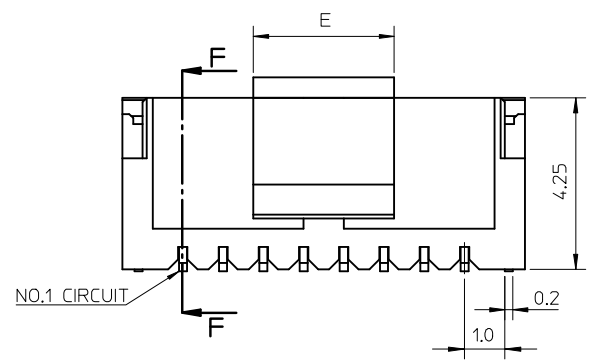
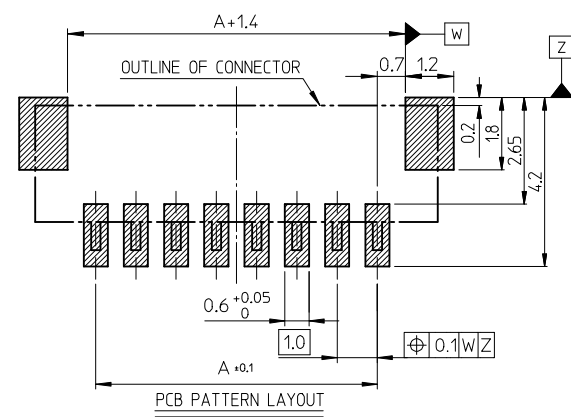
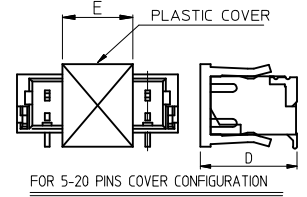
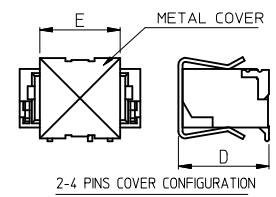
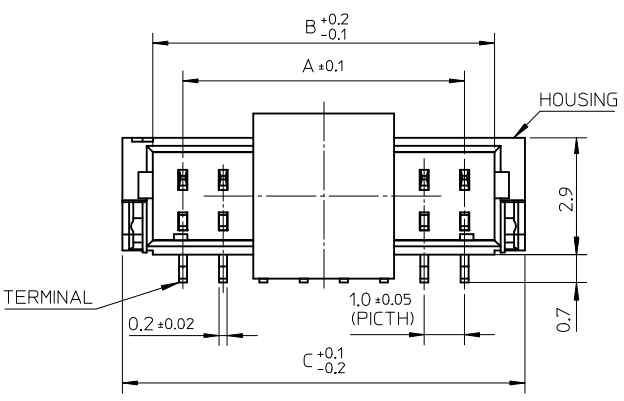
Address: A1208, Overseas Decoration Building, #122 Zhenhua RD., Futian, Shenzhen, China



10 9 8 7 6 5 4 3 2 1

F
E
D
C
B
A

F
E
D
C
B
A



NOTES:
 1.COPLANARITY IS 0.1 mm MAX.
 2.MATERIAL : HOUSING: FOR 48226-XXX1 & 48226-XXX2
 NYLON, GLASS FILLED,UL 94V-0,
 COLOR: SEE TABLE
 FOR 48226-XXX3
 LCP, HALOGEN FREE,
 40% GLASS FILLED,UL 94V-0,
 COLOR: SEE TABLE
 TERMINAL: COPPER ALLOY
 FITTING NAIL: COPPER ALLOY
 PICK AND PLACE COVER :
 (FOR 2~4 PINS) COPPER ALLOY
 (FOR 5~20 PINS) NYLON, GLASS FILLED, UL94V-0,
 COLOR: NATURE(WHITE)

3.FINISHES :
 TERMINAL: SEE TABLE
 FITTING NAIL: SEE TABLE
 PICK AND PLACE COVER (FOR 2~4 PINS): NICKEL PLATED.

4.PRODUCT SPECIFICATION REFER TO PS-48226-001
 5.PACKAGING DRAWING REFER TO PK-48226-001
 6.TEST SUMMARY REFER TO TS-48226-001
 7.APPLICABLE PLUG HOUSING: 48228 SERIES.
 8.LEAD-FREE AND RoHS COMPLIANT PRODUCT

REVISE	EC NO: SH2014-0549	2014/06/20	QUALITY SYMBOLS
	DRWN:FYANG05	2014/07/15	$\nabla_A = 0$
	CHKD:		$\nabla_B = 0$
	APPR:RZHANG		$\nabla_C = 0$
REV	DESCRIPTION		

GENERAL TOLERANCES (UNLESS SPECIFIED)	
	mm INCH
4 PLACES	\pm --- \pm ---
3 PLACES	\pm --- \pm ---
2 PLACES	± 0.25 \pm ---
1 PLACE	± 0.25 \pm ---
ANGULAR $\pm 3^\circ$	
DRAFT WHERE APPLICABLE MUST REMAIN WITHIN DIMENSIONS	

DIMENSION STYLE	
MM ONLY	
DRAWN BY	DATE
BERNIE	2005/11/04
CHECKED BY	DATE
ERIC KAO	2005/11/04
APPROVED BY	DATE
RZHANG	2010/04/14
MATERIAL NO.	
SEE TABLE	

SCALE	DESIGN UNITS	THIRD ANGLE PROJECTION
8:1	METRIC	
TITLE		
1.0 MM WTB VERTICAL HEADER SMT TYPE		
MOLEX INCORPORATED		SHEET NO.
DOCUMENT NO.		1 OF 5
SD-48226-001		
THIS DRAWING CONTAINS INFORMATION THAT IS PROPRIETARY TO MOLEX INCORPORATED AND SHOULD NOT BE USED WITHOUT WRITTEN PERMISSION		

9 8 7 6 5 4 3 2 1

MOLEX PART NO.	HOUSING COLOR&MATERIAL	TERMINAL PLATING	FITTING NAIL PLATING	DIMA	DIMB	DIMC	DIMD	DIME	CKT	COVER MATERIAL
48226-0201	NATURE(WHITE) NYLON	GOLD FLASH OVER ALL THICKNESS : 0.025 MICROMETER MINIMUM NICKEL UNDER PLATED OVER ALL	GOLD FLASH OVER ALL THICKNESS : 0.025 MICROMETER MINIMUM NICKEL UNDER PLATED OVER ALL	1.0	2.4	4.0	4.5	4.0	2	COPPER ALLOY
48226-0301				2.0	3.4	5.0			3	
48226-0302	BLACK NYLON			3.0	4.4	6.0			4	
48226-0401	NATURE(WHITE) NYLON			4.0	5.4	7.0			4.8	
48226-0501				5.0	6.4	8.0	6			
48226-0601				6.0	7.4	9.0	7			
48226-0701				7.0	8.4	10.0	8			
48226-0801				8.0	9.4	11.0	9			
48226-0901				9.0	10.4	12.0	10			
48226-1001				10.0	11.4	13.0	11			
48226-1101				11.0	12.4	14.0	12			
48226-1201				12.0	13.4	15.0	13			
48226-1301				13.0	14.4	16.0	14			
48226-1401				14.0	15.4	17.0	15			
48226-1501				15.0	16.4	18.0	16			
48226-1601				16.0	17.4	19.0	17			
48226-1701				17.0	18.4	20.0	18			
48226-1801				18.0	19.4	21.0	19			
48226-1901				19.0	20.4	22.0	20			
48226-0211	NATURE(WHITE) NYLON			TIN PLATED (MATTE) OVER ALL THICKNESS : 2.54 MICROMETER MINIMUM NICKEL UNDER PLATED OVER ALL	TIN PLATED (MATTE) OVER ALL THICKNESS : 2.54 MICROMETER MINIMUM NICKEL UNDER PLATED OVER ALL	1.0	2.4	4.0	4.5	4.0
48226-0311	BLACK NYLON	2.0	3.4			5.0	3			
48226-0312	BLACK NYLON	3.0	4.4			6.0	4			
48226-0511	NATURE(WHITE) NYLON	4.0	5.4			7.0	4.8	3.5	5	NYLON UL94 V-0
48226-0611		5.0	6.4			8.0			6	
48226-0711		6.0	7.4			9.0			7	
48226-0811		7.0	8.4			10.0			8	
48226-0911		8.0	9.4			11.0			9	

REVISE EC NO: SH2014-0549 DRW:FWYANG05 2014/06/20 CHKD: APPR:RZHANG 2014/07/15	QUALITY SYMBOLS	GENERAL TOLERANCES (UNLESS SPECIFIED)	DIMENSION STYLE	SCALE	DESIGN UNITS	THIRD ANGLE PROJECTION
	▽F=0	mm INCH	MM ONLY	1:1	METRIC	
	▽F=0	4 PLACES ± --- ± ---	DRAWN BY DATE	TITLE		
	▽F=0	3 PLACES ± --- ± ---	BERNIE 2005/11/04	1.0 MM WTB VERTICAL HEADER SMT TYPE		
	2 PLACES ± 0.25 ± ---	CHECKED BY DATE	MATERIAL NO. DOCUMENT NO.			
	1 PLACE ± 0.25 ± ---	ERIC KAO 2005/11/04	MOLEX INCORPORATED			
	ANGULAR ± 3 °	APPROVED BY DATE	SD-48226-001			
		RZHANG 2010/04/14	SEE TABLE			
		MATERIAL NO. DOCUMENT NO.	SHEET NO.			
			2 OF 5			
			THIS DRAWING CONTAINS INFORMATION THAT IS PROPRIETARY TO MOLEX INCORPORATED AND SHOULD NOT BE USED WITHOUT WRITTEN PERMISSION			

MOLEX PART NO.	HOUSING COLOR&MATERIAL	TERMINAL PLATING	FITTING NAIL PLATING	DIMA	DIMB	DMC	DIMD	DIME	CKT	COVER MATERIAL			
48226-1011	NATURE(WHITE) NYLON	TIN PLATED (MATTE) OVER ALL THICKNESS : 2.54 MICROMETER MINIMUM NICKEL UNDER PLATED OVER ALL	TIN PLATED (MATTE) OVER ALL THICKNESS : 2.54 MICROMETER MINIMUM NICKEL UNDER PLATED OVER ALL	9.0	10.4	12.0	4.8	3.5	10	NYLON UL94 V-0			
48226-1111				10.0	11.4	13.0			11				
48226-1211				11.0	12.4	14.0			12				
48226-1311				12.0	13.4	15.0			13				
48226-1411				13.0	14.4	16.0			14				
48226-1511				14.0	15.4	17.0			15				
48226-1611				15.0	16.4	18.0			16				
48226-1711				16.0	17.4	19.0			17				
48226-1811				17.0	18.4	20.0			18				
48226-1911				18.0	19.4	21.0			19				
48226-2011	19.0	20.4	22.0	20									
48226-0221	NATURE(WHITE) NYLON	TIN PLATED (BRIGHT) OVER ALL THICKNESS : 0.025 MICROMETER MINIMUM NICKEL UNDER PLATED OVER ALL	TIN PLATED (BRIGHT) OVER ALL THICKNESS : 0.025 MICROMETER MINIMUM NICKEL UNDER PLATED OVER ALL	1.0	2.4	4.0	4.5	4.0	2	COPPER ALLOY			
48226-0321	BLACK NYLON			2.0	3.4	5.0			3				
48226-0322				3.0	4.4	6.0			4				
48226-0421	NATURE(WHITE) NYLON			4.0	5.4	7.0			4.8		3.5	5	NYLON UL94 V-0
48226-0521				5.0	6.4	8.0						6	
48226-0621				6.0	7.4	9.0						7	
48226-0721				7.0	8.4	10.0						8	
48226-0821				8.0	9.4	11.0						9	
48226-0921				9.0	10.4	12.0						10	
48226-1021				10.0	11.4	13.0						11	
48226-1121		11.0	12.4	14.0	12								
48226-1221		12.0	13.4	15.0	13								
48226-1321		13.0	14.4	16.0	14								
48226-1421	14.0	15.4	17.0	15									
48226-1521	15.0	16.4	18.0	16									
48226-1621	16.0	17.4	19.0	17									
48226-1721	17.0	18.4	20.0	18									
48226-1821	18.0	19.4	21.0	19									
48226-1921	19.0	20.4	22.0	20									

REVISE EC NO: SH2014-0549 DRWN: FYANG05 2014/06/20 CHKD: CHYD APPR: RZHANG 2014/07/15 REV	QUALITY SYMBOLS	GENERAL TOLERANCES (UNLESS SPECIFIED)	DIMENSION STYLE	SCALE	DESIGN UNITS	THIRD ANGLE PROJECTION
	$\nabla_A = 0$ $\nabla_G = 0$ $\nabla_P = 0$	mm INCH 4 PLACES ± --- ± --- 3 PLACES ± --- ± --- 2 PLACES ± 0.25 ± --- 1 PLACE ± 0.25 ± --- ANGULAR ± 3 °	MM ONLY	1:1	METRIC	
			DRAWN BY: BERNIE DATE: 2005/11/04	TITLE: 1.0 MM WTB VERTICAL HEADER SMT TYPE		
			CHECKED BY: ERIC KAO DATE: 2005/11/04	MATERIAL NO. SEE TABLE DOCUMENT NO. SD-48226-001		
		APPROVED BY: RZHANG DATE: 2010/04/14	SHEET NO. 3 OF 5			
		DRAFT WHERE APPLICABLE MUST REMAIN WITHIN DIMENSIONS	THIS DRAWING CONTAINS INFORMATION THAT IS PROPRIETARY TO MOLEX INCORPORATED AND SHOULD NOT BE USED WITHOUT WRITTEN PERMISSION			

MOLEX PART NO.	HOUSING COLOR&MATERIAL	TERMINAL PLATING	FITTING NAIL PLATING	DIMA	DIMB	DIMC	DIMD	DIME	CKT	COVER MATERIAL
48226-0203	BLACK LCP HALOGEN FREE	GOLD FLASH OVER ALL THICKNESS : 0.025 MICROMETER MINIMUM NICKEL UNDER PLATED OVER ALL	GOLD FLASH OVER ALL THICKNESS : 0.025 MICROMETER MINIMUM NICKEL UNDER PLATED OVER ALL	1.0	2.4	4.0	4.5	4.0	2	COPPER ALLOY
48226-0303				2.0	3.4	5.0			3	
48226-0403				3.0	4.4	6.0			4	
48226-0503				4.0	5.4	7.0	5	NYLON UL94 V-0		
48226-0603				5.0	6.4	8.0	6			
48226-0703				6.0	7.4	9.0	7			
48226-0803				7.0	8.4	10.0	8			
48226-0903				8.0	9.4	11.0	9			
48226-1003				9.0	10.4	12.0	4.8		3.5	10
48226-1103				10.0	11.4	13.0				11
48226-1203				11.0	12.4	14.0				12
48226-1303				12.0	13.4	15.0				13
48226-1403				13.0	14.4	16.0				14
48226-1503				14.0	15.4	17.0				15
48226-1603				15.0	16.4	18.0				16
48226-1703				16.0	17.4	19.0				17
48226-1803				17.0	18.4	20.0	18			
48226-1903				18.0	19.4	21.0	19			
48226-2003				19.0	20.4	22.0	20			
48226-0213				BLACK LCP HALOGEN FREE	TIN PLATED (MATTE) OVER ALL THICKNESS : 2.54 MICROMETER MINIMUM NICKEL UNDER PLATED OVER ALL	TIN PLATED (MATTE) OVER ALL THICKNESS : 2.54 MICROMETER MINIMUM NICKEL UNDER PLATED OVER ALL	1.0	2.4	4.0	4.5
48226-0313	2.0	3.4	5.0				3			
48226-0413	3.0	4.4	6.0				4			
48226-0513	4.0	5.4	7.0				5	NYLON UL94 V-0		
48226-0613	5.0	6.4	8.0				6			
48226-0713	6.0	7.4	9.0				7			
48226-0813	7.0	8.4	10.0				8			
48226-0913	8.0	9.4	11.0				9			

REVISE IEC NO: SH2014-0549 T1 DRW:NYANG05 2014/06/20 CHKD: APPR:RZHANG 2014/07/15 REV	QUALITY SYMBOLS	GENERAL TOLERANCES (UNLESS SPECIFIED)	DIMENSION STYLE	SCALE	DESIGN UNITS	THIRD ANGLE PROJECTION	
	$\nabla_A = 0$ $\nabla_B = 0$ $\nabla_C = 0$	mm INCH 4 PLACES ± --- ± --- 3 PLACES ± --- ± --- 2 PLACES ± 0.25 ± --- 1 PLACE ± 0.25 ± --- ANGULAR ± 3°	MM ONLY	1:1	METRIC		
		DRAFT WHERE APPLICABLE MUST REMAIN WITHIN DIMENSIONS	DRAWN BY DATE BERNIE 2005/11/04 CHECKED BY DATE ERIC KAO 2005/11/04 APPROVED BY DATE RZHANG 2010/04/14 MATERIAL NO.	TITLE	1.0 MM WTB VERTICAL HEADER SMT TYPE		
			SEE TABLE SIZE A3 THIS DRAWING CONTAINS INFORMATION THAT IS PROPRIETARY TO MOLEX INCORPORATED AND SHOULD NOT BE USED WITHOUT WRITTEN PERMISSION	MOLEX INCORPORATED DOCUMENT NO. SD-48226-001 SHEET NO. 4 OF 5			

MOLEX PART NO.	HOUSING COLOR&MATERIAL	TERMINAL PLATING	FITTING NAIL PLATING	DIMA	DIMB	DIMC	DIMD	DIME	CKT	COVER MATERIAL
48226-1013	BLACK LCP HALOGEN FREE	TIN PLATED (MATTE) OVER ALL THICKNESS : 2.54 MICROMETER MINIMUM NICKEL UNDER PLATED OVER ALL	TIN PLATED (MATTE) OVER ALL THICKNESS : 2.54 MICROMETER MINIMUM NICKEL UNDER PLATED OVER ALL	9.0	10.4	12.0	4.8	3.5	10	NYLON UL94 V-0
48226-1113				10.0	11.4	13.0			11	
48226-1213				11.0	12.4	14.0			12	
48226-1313				12.0	13.4	15.0			13	
48226-1413				13.0	14.4	16.0			14	
48226-1513				14.0	15.4	17.0			15	
48226-1613				15.0	16.4	18.0			16	
48226-1713				16.0	17.4	19.0			17	
48226-1813				17.0	18.4	20.0			18	
48226-1913				18.0	19.4	21.0			19	
48226-2013	19.0	20.4	22.0	20						
48226-0223	BLACK LCP HALOGEN FREE	TIN PLATED (BRIGHT) OVER ALL THICKNESS : 0.025 MICROMETER MINIMUM NICKEL UNDER PLATED OVER ALL	TIN PLATED (BRIGHT) OVER ALL THICKNESS : 0.025 MICROMETER MINIMUM NICKEL UNDER PLATED OVER ALL	1.0	2.4	4.0	4.5	4.0	2	COPPER ALLOY
48226-0323				2.0	3.4	5.0			3	
48226-0423				3.0	4.4	6.0			4	
48226-0523				4.0	5.4	7.0			5	
48226-0623				5.0	6.4	8.0	6			
48226-0723				6.0	7.4	9.0	7			
48226-0823				7.0	8.4	10.0	8			
48226-0923				8.0	9.4	11.0	9			
48226-1023				9.0	10.4	12.0	10			
48226-1123				10.0	11.4	13.0	11			
48226-1223				11.0	12.4	14.0	12			
48226-1323				12.0	13.4	15.0	13			
48226-1423				13.0	14.4	16.0	14			
48226-1523				14.0	15.4	17.0	15			
48226-1623				15.0	16.4	18.0	16			
48226-1723				16.0	17.4	19.0	17			
48226-1823				17.0	18.4	20.0	18			
48226-1923				18.0	19.4	21.0	19			
48226-2023				19.0	20.4	22.0	20			

REVISE EC NO: SH2014-0549 2014/06/20 TDRW: F YANG05 CHKD: APPR: RZHANG 2014/07/15 REV	QUALITY SYMBOLS	GENERAL TOLERANCES (UNLESS SPECIFIED)	DIMENSION STYLE	SCALE	DESIGN UNITS	THIRD ANGLE PROJECTION
	$F_A = 0$ $F_G = 0$ $F_P = 0$	mm INCH 4 PLACES ± --- ± --- 3 PLACES ± --- ± --- 2 PLACES ± 0.25 ± --- 1 PLACE ± 0.25 ± --- ANGULAR ± 3 °	MM ONLY	1:1	METRIC	
		DRAFT WHERE APPLICABLE MUST REMAIN WITHIN DIMENSIONS	DRAWN BY DATE BERNIE 2005/11/04 CHECKED BY DATE ERIC KAO 2005/11/04 APPROVED BY DATE RZHANG 2010/04/14 MATERIAL NO.	TITLE 1.0 MM WTB VERTICAL HEADER SMT TYPE		
			SEE TABLE SIZE A3 THIS DRAWING CONTAINS INFORMATION THAT IS PROPRIETARY TO MOLEX INCORPORATED AND SHOULD NOT BE USED WITHOUT WRITTEN PERMISSION	MOLEX INCORPORATED DOCUMENT NO. SD-48226-001		SHEET NO. 5 OF 5