



Chipsmall Limited consists of a professional team with an average of over 10 year of expertise in the distribution of electronic components. Based in Hongkong, we have already established firm and mutual-benefit business relationships with customers from,Europe,America and south Asia,supplying obsolete and hard-to-find components to meet their specific needs.

With the principle of “Quality Parts,Customers Priority,Honest Operation,and Considerate Service”,our business mainly focus on the distribution of electronic components. Line cards we deal with include Microchip,ALPS,ROHM,Xilinx,Pulse,ON,Everlight and Freescale. Main products comprise IC,Modules,Potentiometer,IC Socket,Relay,Connector.Our parts cover such applications as commercial,industrial, and automotives areas.

We are looking forward to setting up business relationship with you and hope to provide you with the best service and solution. Let us make a better world for our industry!



Contact us

Tel: +86-755-8981 8866 Fax: +86-755-8427 6832

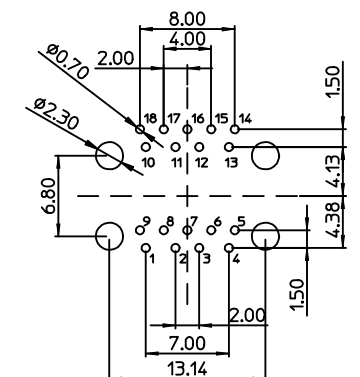
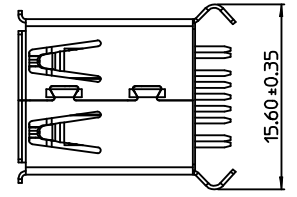
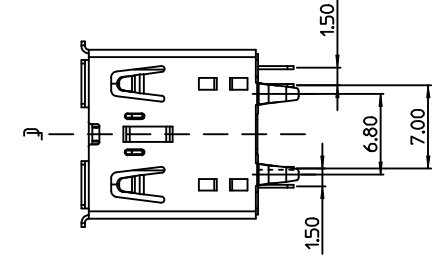
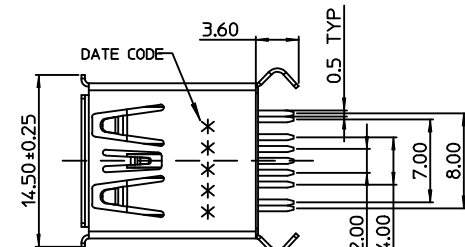
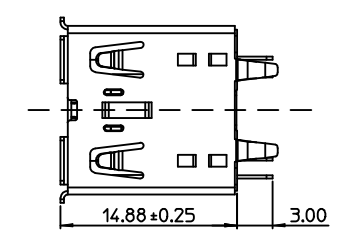
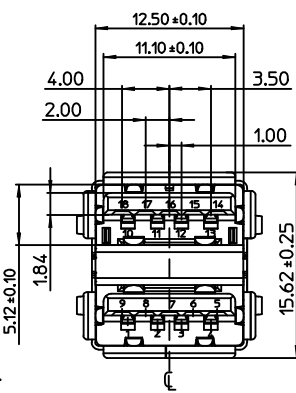
Email & Skype: info@chipsmall.com Web: www.chipsmall.com

Address: A1208, Overseas Decoration Building, #122 Zhenhua RD., Futian, Shenzhen, China

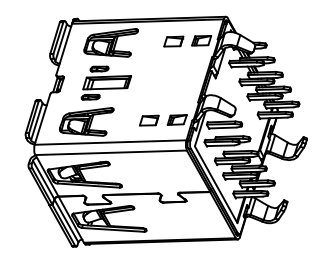


| Pin Number | Signal Name | Description |
|------------|-------------|--|
| 1,10 | VBUS | Power |
| 2,11 | D- | USB2.0 differential pair |
| 3,12 | D+ | |
| 4,13 | GND | Ground for power return |
| 5,14 | StdA_SSRX- | SuperSpeed receiver differential pair |
| 6,15 | StdA_SSRX+ | |
| 7,16 | GND_DRAIN | Ground for signal return |
| 8,17 | StdA_SSTX- | SuperSpeed transmitter differential pair |
| 9,18 | StdA_SSTX+ | |
| Shell | Shield | Connector metal shell |

USB3.0 Standard-A Connector Pin Assignments



RECOMMEND P.C.B LAYOUT (THICKNESS=1.2mm)
(COMPONENT SIDE) TOLERANCE±0.05



NOTES:
1.MATERIAL:
HOUSING: THERMOPLASTIC, GLASS FIBER FILLED, HALOGEN FREE, UL94-HB, COLOR: BLUE.
COVER: THERMOPLASTIC, GLASS FIBER FILLED, HALOGEN FREE, UL94-HB, COLOR: BLUE.
USB2.0 CONTACT(SHORT PIN&LONG PIN): COPPER ALLOY.
USB3.0 CONTACT(SHORT PIN&LONG PIN): COPPER ALLOY.
SHELL: STAINLESS STEEL.
IN CLIP SHELL:STAINLESS STEEL.
2.FINISH:
CONTACT:
SELECTIVE GOLD(Au) IN CONTACT AREA(SEE TABLE)
SELECTIVE MATTE TIN(Sn) ALLOY IN SOLDER TAIL AREA THICKNESS=120 MICROINCH MINIMUM.
NICKEL(Ni) OVERALL THICKNESS=80 MICROINCH MINIMUM.
SHELL:
NICKEL(Ni) OVERALL THICKNESS=30 MICROINCH MINIMUM.
IN CLIP SHELL:
NICKEL(Ni) OVERALL THICKNESS=30 MICROINCH MINIMUM.
3. PRODUCT SPECIFICATION REFERS TO PS-48409-001
4. PACKAGE SPECIFICATION REFERS TO PK-48409-001
5. TEST SUMMARY REFERS TO TS-48409-001
6. LEAD FREE AND RoHS COMPLIANT PRODUCT.
7. DATE CODE: X X X X X
 YEAR WEEK DAY

| PLATING | MOLEX P/N |
|-------------------------|------------|
| 30u" Au | 48409-0001 |
| 2u" Au & 30u" Pd-Ni | 48409-0002 |
| 15u" Au | 48409-0003 |
| GOLD FLASH(3u" Au MIN.) | 48409-0004 |

| | | | | | | | | | | | |
|------------------------|------|-------------|---|---------------------------------------|------------|-----------------------|---|---|------------------------------|------------------------|--|
| RELEASE EC NO: A | REV | DESCRIPTION | QUALITY SYMBOLS F=0 F=0 F=0 | GENERAL TOLERANCES (UNLESS SPECIFIED) | | DIMENSION STYLE | | SCALE 1:1 | DESIGN UNITS | THIRD ANGLE PROJECTION | |
| | | | | mm | INCH | DRAWN BY RUBY | DATE 2013.9.22 | TITLE USB 3.0 CONNECTOR A RECEPTACLE DOUBLE 180° VERTICAL | | | |
| | | | | 4 PLACES ± | + | CHECKED BY FYANG | DATE 2013.9.22 | MOLEX INCORPORATED | | | |
| | | | | 3 PLACES ± | + | APPROVED BY RZHANG | DATE 2013.9.22 | | DOCUMENT NO. SD-48409-001 | | |
| 2 PLACES ± | 0.20 | + | MATERIAL NO. SEE TABLE | SHEET NO. 1 OF 1 | | | | | | | |
| 1 PLACE ± | 0.25 | ± | DRAFT WHERE APPLICABLE MUST REMAIN WITHIN DIMENSIONS | | SIZE A3 | | THIS DRAWING CONTAINS INFORMATION THAT IS PROPRIETARY TO MOLEX INCORPORATED AND SHOULD NOT BE USED WITHOUT WRITTEN PERMISSION | | | | |