



Chipsmall Limited consists of a professional team with an average of over 10 year of expertise in the distribution of electronic components. Based in Hongkong, we have already established firm and mutual-benefit business relationships with customers from,Europe,America and south Asia,supplying obsolete and hard-to-find components to meet their specific needs.

With the principle of “Quality Parts,Customers Priority,Honest Operation,and Considerate Service”,our business mainly focus on the distribution of electronic components. Line cards we deal with include Microchip,ALPS,ROHM,Xilinx,Pulse,ON,Everlight and Freescale. Main products comprise IC,Modules,Potentiometer,IC Socket,Relay,Connector.Our parts cover such applications as commercial,industrial, and automotives areas.

We are looking forward to setting up business relationship with you and hope to provide you with the best service and solution. Let us make a better world for our industry!



Contact us

Tel: +86-755-8981 8866 Fax: +86-755-8427 6832

Email & Skype: info@chipsmall.com Web: www.chipsmall.com

Address: A1208, Overseas Decoration Building, #122 Zhenhua RD., Futian, Shenzhen, China



DO NOT SCALE DRAWING
DIMENSION IN METRIC

PROJECT NO.

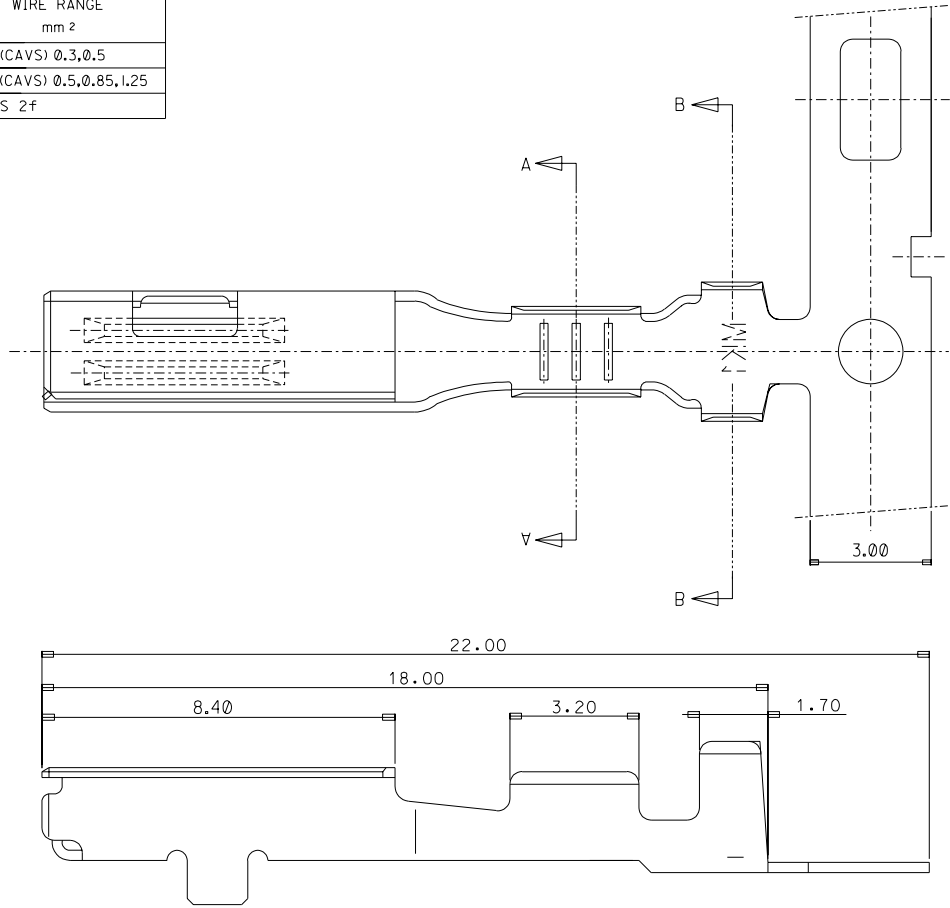
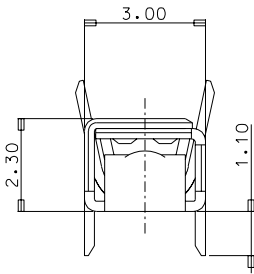
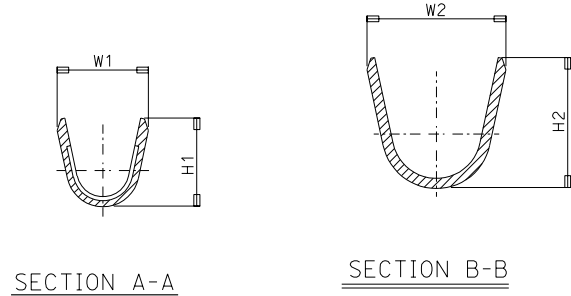
SIMILAR ITEM

DWG. NO.



SD-49702-001

8 7 6 5 4 3 2 1

ENG.NO	DESCRIPTION	DIMENSION				WIRE RANGE mm 2
		W1	H1	W2	H2	
49702-6702	.090 FEMALE TERMINAL-LIF TYPE (S)	2.1	2.2	3.4	3.25	AVS(CAVS) 0.3,0.5
49702-6802	.090 FEMALE TERMINAL-LIF TYPE (M)	2.6	2.95	4.0	3.8	AVS(CAVS) 0.5,0.85,1.25
49702-6902	.090 FEMALE TERMINAL-LIF TYPE (L)	3.6	4.0	4.3	3.9	AVSS 2f



- NOTES
1. MATERIAL: COPPER ALLOY 0.25 \pm 0.01
 2. FINISH: PRE-TIN PLATING
 3. MATING TERMINAL: 57919-6*02
APPLICABLE HOUSING: 49009-4610

NEW RELEASED EC NO. KOR2004-0071 DRWN: B.C.YOON 03/12/11 CHK: B.C.YOON 03/12/11 APPR: C.W.LEE		DESCRIPTION	QUALITY SYMBOLS MAJOR △ = 0 CRITICAL ▽ = 0	GENERAL TOLERANCES: (UNLESS SPECIFIED)		SCALE 8:1	DESIGN UNITS <input checked="" type="checkbox"/> mm <input type="checkbox"/> INCH	 THIRD ANGLE PROJECTION	DIMENSIONS: <input type="checkbox"/> mm <input type="checkbox"/> INCH <input checked="" type="checkbox"/> mm ONLY		SHT	REV			
											REVISE ON CAD ONLY				
				4 PLACES	±0.	±.	DRAWN BY & DATE B.C.YOON 03/08/13		TITLE: .090 FEMALE TERMINAL(LIF TYPE)						
				3 PLACES	±0.	±.	CHECKED BY & DATE B.C.YOON 03/08/13								
2 PLACES	±0.30	±.	APPROVED BY & DATE C.W.LEE 03/08/13		 MOLEX INCORPORATED										
1 PLACE	±0.30	±.													
A		REV	ANGULAR: ± 3 °		CAD FILENAME SD49702.DGN		MATERIAL NO. SEETABLE		DRAWING NO. SD-49702-001		SHEET NO. 10F1				
			DRAFT WHERE APPLICABLE MUST REMAIN WITHIN DIMENSIONS		THIS DRAWING CONTAINS INFORMATION THAT IS PROPRIETARY TO MOLEX INCORPORATED AND SHOULD NOT BE USED WITHOUT WRITTEN PERMISSION.										
					SIZE B										

8 7 6 5 4 3 2 1 MX-A3