



Chipsmall Limited consists of a professional team with an average of over 10 year of expertise in the distribution of electronic components. Based in Hongkong, we have already established firm and mutual-benefit business relationships with customers from,Europe,America and south Asia,supplying obsolete and hard-to-find components to meet their specific needs.

With the principle of “Quality Parts,Customers Priority,Honest Operation,and Considerate Service”,our business mainly focus on the distribution of electronic components. Line cards we deal with include Microchip,ALPS,ROHM,Xilinx,Pulse,ON,Everlight and Freescale. Main products comprise IC,Modules,Potentiometer,IC Socket,Relay,Connector.Our parts cover such applications as commercial,industrial, and automotives areas.

We are looking forward to setting up business relationship with you and hope to provide you with the best service and solution. Let us make a better world for our industry!



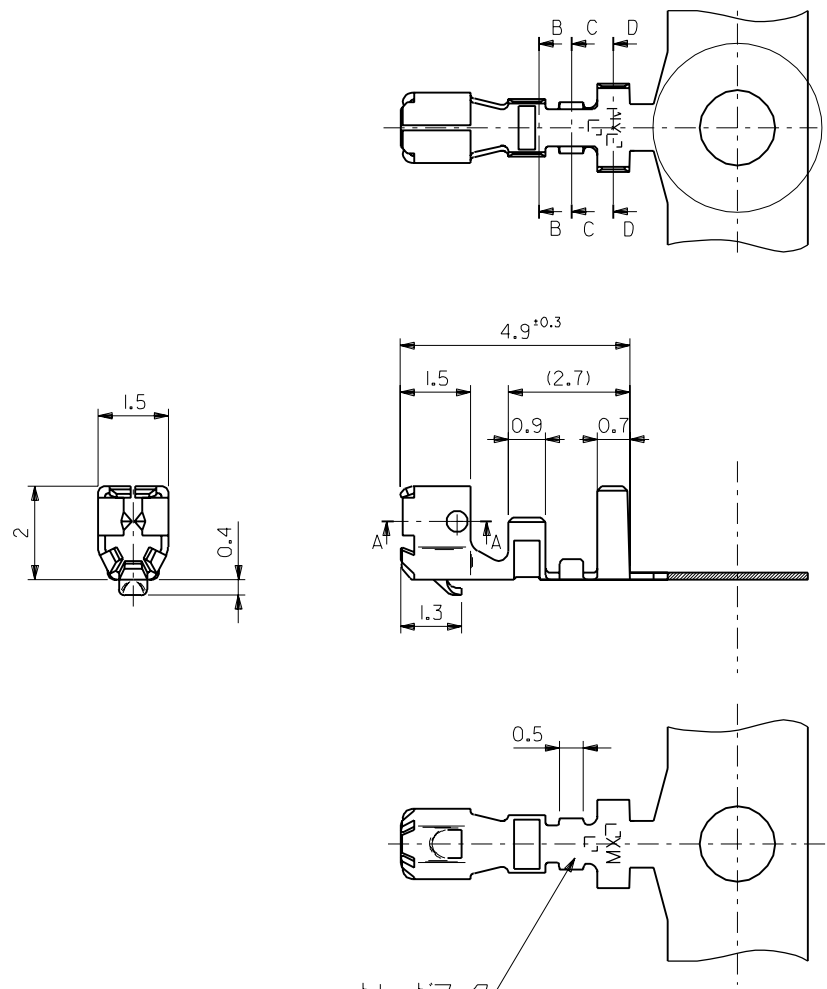
Contact us

Tel: +86-755-8981 8866 Fax: +86-755-8427 6832

Email & Skype: info@chipsmall.com Web: www.chipsmall.com

Address: A1208, Overseas Decoration Building, #122 Zhenhua RD., Futian, Shenzhen, China

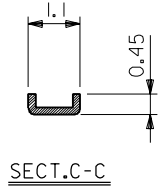
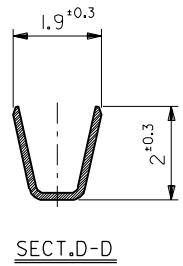
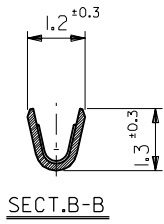
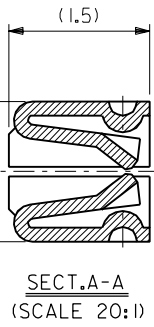




注記
NOTE

1. 適用ハウジング : 51004, 51049 シリーズ
 APPLICABLE HOUSING : 51004, 51049 SERIES

トレードマーク
TRADE MARK



50011-8100	バラ状 LOOSE
50011-8000	連鎖状 CHAIN
ENG. NO.	端子形状 FORM

角度 ANGLE	±3°								材料 MATERIAL	リン青銅 錫メッキ (t=0.15) PHOS.BRO. PRE-TINNED (t=0.15)
30以上 OVER	+0.3								仕上げ FINISH	—#—
10以上 30未満 OVER UNDER	+0.25								適用電線範囲 WIRE RANGE	AWG #24~#30
10未満 UNDER	+0.2								被覆外径 INS. RANGE	φ0.8~φ1.4
一般公差 GENERAL TOLERANCES		記号 LTR	変更内容 REVISION RECORD	DR.	日付 DATE	T.Y. H.H.	'95/8/21	再作図 REDRAWN	(JC60071)	CHK'D BY '95/8/22 H.HIRAMOTO
									APP'D BY '95/8/22 M.FUKUSHIMA	尺度 SCALE 10 : 1

MOLEX-JAPAN CO.,LTD. 日本モレックス株式会社	
REVISE ONLY ON CAD SYSTEM	
TITLE 名称 2.0 LOW PROFILE CRIMP RECEPTACLE	
DWG. NO. SD-50011-8*00	REV H