



Chipsmall Limited consists of a professional team with an average of over 10 year of expertise in the distribution of electronic components. Based in Hongkong, we have already established firm and mutual-benefit business relationships with customers from,Europe,America and south Asia,supplying obsolete and hard-to-find components to meet their specific needs.

With the principle of “Quality Parts,Customers Priority,Honest Operation,and Considerate Service”,our business mainly focus on the distribution of electronic components. Line cards we deal with include Microchip,ALPS,ROHM,Xilinx,Pulse,ON,Everlight and Freescale. Main products comprise IC,Modules,Potentiometer,IC Socket,Relay,Connector.Our parts cover such applications as commercial,industrial, and automotives areas.

We are looking forward to setting up business relationship with you and hope to provide you with the best service and solution. Let us make a better world for our industry!



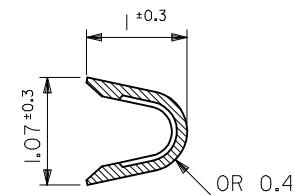
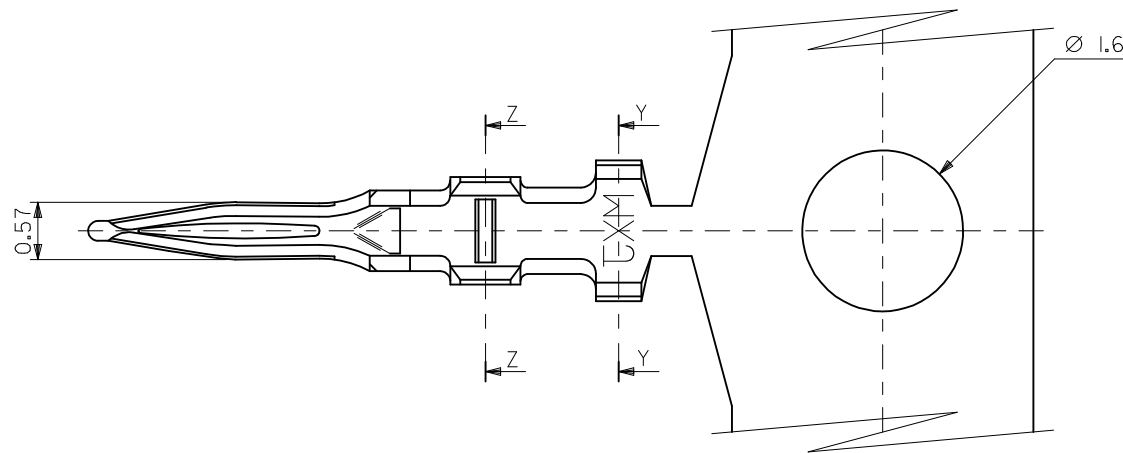
Contact us

Tel: +86-755-8981 8866 Fax: +86-755-8427 6832

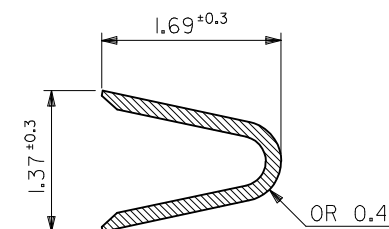
Email & Skype: info@chipsmall.com Web: www.chipsmall.com

Address: A1208, Overseas Decoration Building, #122 Zhenhua RD., Futian, Shenzhen, China

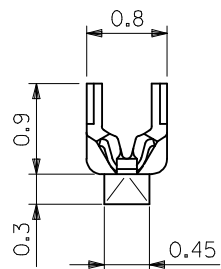




SECT. Z-Z



SECT. Y-Y



注記
NOTES

- 適合ハウジング：51022 シリーズ
APPLICABLE HOUSING : 51022 SERIES
- メッキ仕様 PLATING
錫 0.9μm MIN. リフロー処理 (前メッキ)
TIN 0.9μm MIN. REFLOW TREATMENT (PRE-PLATED)

材料 MATERIAL	リン青銅 PHOSPHOR BRONZE (t=0.15)
仕上げ FINISH	—H—
適用電線範囲 WIRE RANGE	AWG #28-32
被覆外径 INS. RANGE	Ø 0.5-1.0

REVISED	EC NO: J2017-0317	2017/02/09	2017/03/15
DRMNGES	CHKD:	APPR: MSASAO	
REV			

GENERAL TOLERANCES (UNLESS SPECIFIED)			
0.25 UNDER	±0.03		
0.25 OVER 0.5 UNDER	±0.05		
0.5 OVER 1.0 UNDER	±0.1		
1.0 OVER 3.0 UNDER	±0.2		
3.0 OVER	±0.25		
ANGULAR	±3 °		
DRAFT WHERE APPLICABLE MUST REMAIN WITHIN DIMENSIONS			

DIMENSION STYLE MM ONLY	
DRAWN BY	DATE
H.HIRAMOTO	1992/10/22
CHECKED BY	DATE
H.HIRAMOTO	1992/10/22
APPROVED BY	DATE
H.FUKUSHIMA	1993/07/12
MATERIAL NO.	
SEE CHART	
SIZE	A3

SCALE 20:1	DESIGN UNITS METRIC	THIRD ANGLE PROJECTION	TITLE 1.25 WIRE TO BOARD TERM. NAL
DOCUMENT NO. SD-50061-8*00			SHEET NO. 1 OF 1
THIS DRAWING CONTAINS INFORMATION THAT IS PROPRIETARY TO MOLEX ELECTRONIC TECHNOLOGIES, LLC AND SHOULD NOT BE USED WITHOUT WRITTEN PERMISSION			

50061-8000	連鎖状 CHAIN
ENG. NO.	端子形状 FORM