



Chipsmall Limited consists of a professional team with an average of over 10 year of expertise in the distribution of electronic components. Based in Hongkong, we have already established firm and mutual-benefit business relationships with customers from,Europe,America and south Asia,supplying obsolete and hard-to-find components to meet their specific needs.

With the principle of “Quality Parts,Customers Priority,Honest Operation,and Considerate Service”,our business mainly focus on the distribution of electronic components. Line cards we deal with include Microchip,ALPS,ROHM,Xilinx,Pulse,ON,Everlight and Freescale. Main products comprise IC,Modules,Potentiometer,IC Socket,Relay,Connector.Our parts cover such applications as commercial,industrial, and automotives areas.

We are looking forward to setting up business relationship with you and hope to provide you with the best service and solution. Let us make a better world for our industry!



Contact us

Tel: +86-755-8981 8866 Fax: +86-755-8427 6832

Email & Skype: info@chipsmall.com Web: www.chipsmall.com

Address: A1208, Overseas Decoration Building, #122 Zhenhua RD., Futian, Shenzhen, China



E

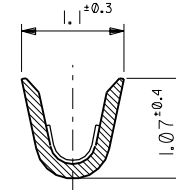
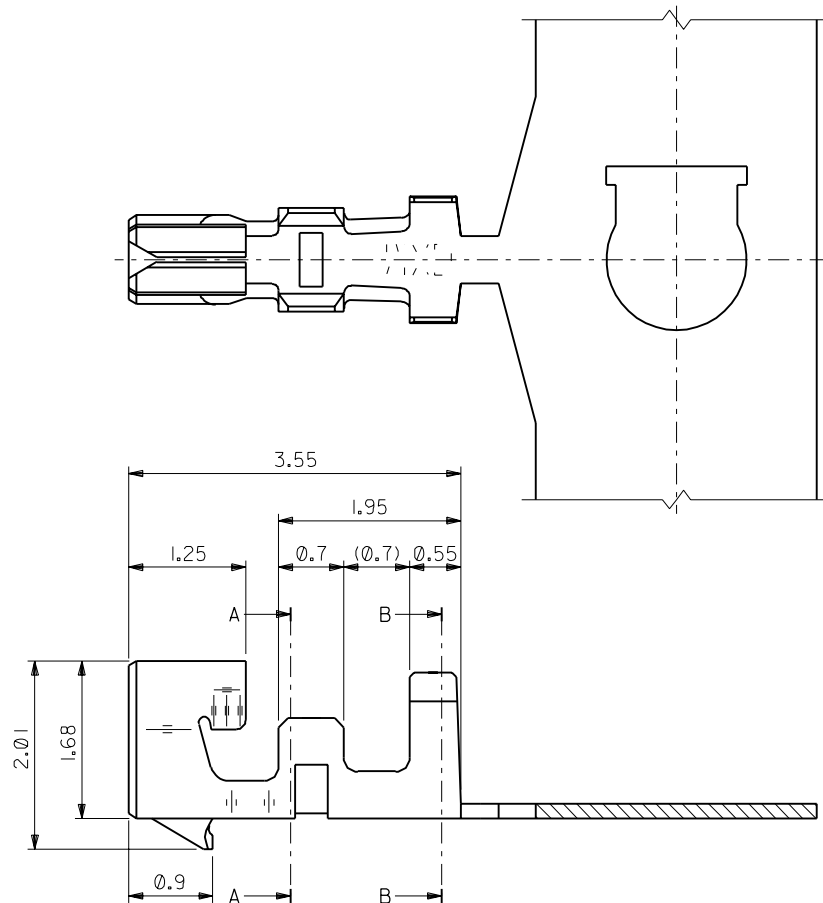
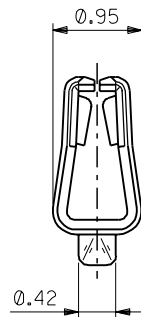
D

C
DIMENSIONS IN METRIC DO NOT SCALE DRAWING

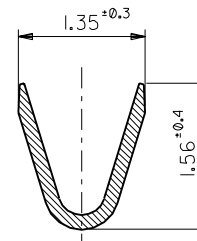
B

A

8 7 6 5 4 3 2 1



SECT. A-A
(SCALE 20:1)



SECT. B-B
(SCALE 20:1)

注記 NOTES

★

- 適合ハウジング : 51127 シリーズ
APPLICABLE HOUSING : 51127 SERIES.
- 材質
MATERIAL
リン青銅 (t=0.152)
PHOSPHOR BRONZE (t=0.152)
- メッキ仕様
PLATING
金メッキ 0.2 μmMIN. (ニッケル下地 2.0 μmMIN.)
Au 0.2 μmMIN., Ni (UNDER) 2.0 μmMIN.

角度 ANGLE		±3°			材料 MATERIAL
30° 以上	OVER	±0.3			注記参照 SEE NOTES
10° 以上 30° 未満	OVER UNDER	±0.25	A	変更 (J40641)	仕上げ FINISH
10° 未満	UNDER	±0.2	0	新規作成 (J40269)	注記参照 SEE NOTES
一般公差 GENERAL TOLERANCES			記号 LTR	変更内容 REVISION RECORD	適用電線範囲 WIRE RANGE
					AWG #28~#32
					被覆外径 INS. RANGE
					0.5~0.10
					DRAWN BY '94/4/4 M.FUJIKURA
					CHK'D BY '94/8/3 S.KUNISHI
					APP'D BY '94/8/3 M.FUKUSHIMA
					尺度 SCALE 10 : 1
					DR. CHK. 日付 DATE

50516-8041	連続状 CHAIN
ENG. NO.	端子形状 FORM

molex MOLEX-JAPAN CO.,LTD.
日本モレックス株式会社

REVISE ONLY ON CAD SYSTEM
TITLE 名称

1.25 DUAL WIRE TO BOARD
CONN. CRIMP RECEPTACLE

DWG. NO. SD-50516-*****
REV A