



Chipsmall Limited consists of a professional team with an average of over 10 year of expertise in the distribution of electronic components. Based in Hongkong, we have already established firm and mutual-benefit business relationships with customers from,Europe,America and south Asia,supplying obsolete and hard-to-find components to meet their specific needs.

With the principle of “Quality Parts,Customers Priority,Honest Operation,and Considerate Service”,our business mainly focus on the distribution of electronic components. Line cards we deal with include Microchip,ALPS,ROHM,Xilinx,Pulse,ON,Everlight and Freescale. Main products comprise IC,Modules,Potentiometer,IC Socket,Relay,Connector.Our parts cover such applications as commercial,industrial, and automotives areas.

We are looking forward to setting up business relationship with you and hope to provide you with the best service and solution. Let us make a better world for our industry!



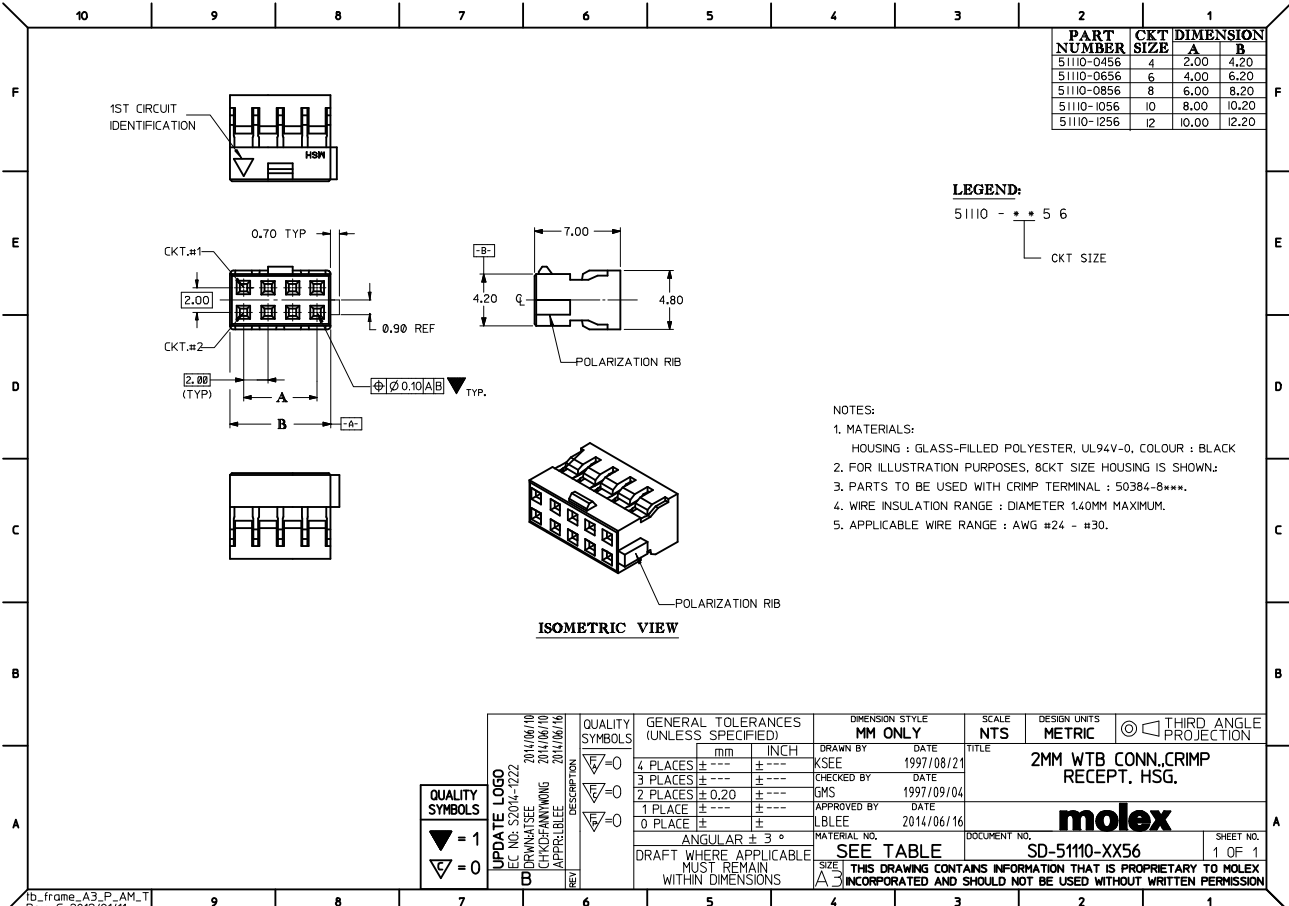
Contact us

Tel: +86-755-8981 8866 Fax: +86-755-8427 6832

Email & Skype: info@chipsmall.com Web: www.chipsmall.com

Address: A1208, Overseas Decoration Building, #122 Zhenhua RD., Futian, Shenzhen, China





QUALITY SYMBOLS	DESCRIPTION
$\nabla = 1$	
$\nabla = 0$	

UPDATE LOGO	2014/06/10
EC NO. S2014-0222	2014/06/10
DRAWN BY SEE	2014/06/10
CHKD-FANWONG	2014/06/10
APPR-LLEE	2014/06/16
REV	DESCRIPTION

QUALITY SYMBOLS	GENERAL TOLERANCES (UNLESS SPECIFIED)	
	mm	INCH
$\nabla = 0$	4 PLACES ± 0.20	± 0.008
$\nabla = 0$	3 PLACES ± 0.25	± 0.010
$\nabla = 0$	2 PLACES ± 0.30	± 0.012
$\nabla = 0$	1 PLACE ± 0.40	± 0.016
$\nabla = 0$	0 PLACE ± 0.50	± 0.020

DIMENSION STYLE		SCALE	DESIGN UNITS	THIRD ANGLE PROJECTION
MM ONLY		NTS	METRIC	\odot
DRAWN BY	DATE	TITLE		
KSEE	1997/08/21	2MM WT8 CONN. CRIMP RECEPT. HSG.		
CHECKED BY	DATE			
GMS	1997/09/04			
APPROVED BY	DATE			
LBLEE	2014/06/16			

MATERIAL NO.	DOCUMENT NO.	SHEET NO.
SEE TABLE	SD-51110-XX56	1 OF 1