



Chipsmall Limited consists of a professional team with an average of over 10 year of expertise in the distribution of electronic components. Based in Hongkong, we have already established firm and mutual-benefit business relationships with customers from,Europe,America and south Asia,supplying obsolete and hard-to-find components to meet their specific needs.

With the principle of "Quality Parts,Customers Priority,Honest Operation,and Considerate Service",our business mainly focus on the distribution of electronic components. Line cards we deal with include Microchip,ALPS,ROHM,Xilinx,Pulse,ON,Everlight and Freescale. Main products comprise IC,Modules,Potentiometer,IC Socket,Relay,Connector.Our parts cover such applications as commercial,industrial, and automotives areas.

We are looking forward to setting up business relationship with you and hope to provide you with the best service and solution. Let us make a better world for our industry!



Contact us

Tel: +86-755-8981 8866 Fax: +86-755-8427 6832

Email & Skype: info@chipsmall.com Web: www.chipsmall.com

Address: A1208, Overseas Decoration Building, #122 Zhenhua RD., Futian, Shenzhen, China



E

D

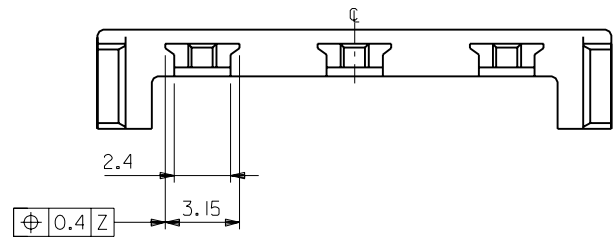
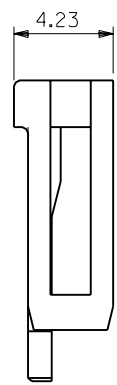
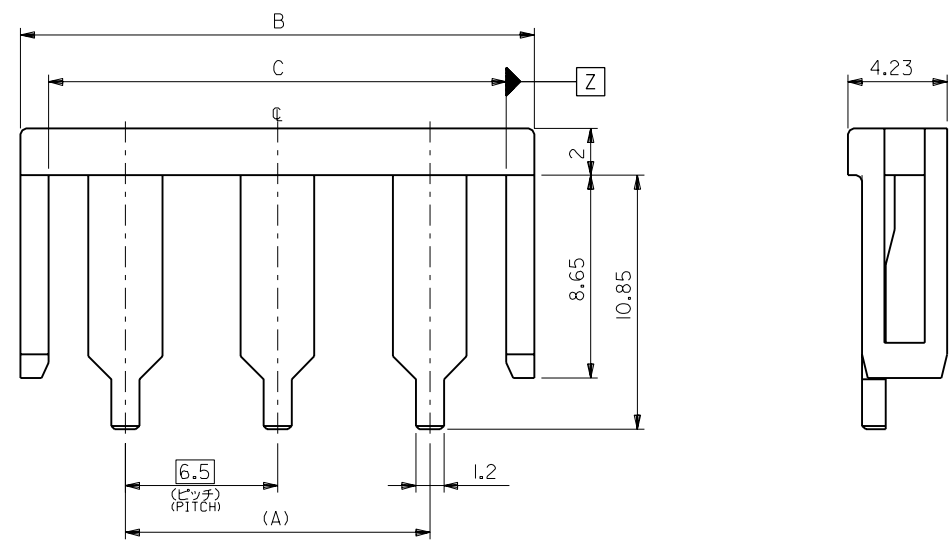
C

B

A

MM

DIMENSIONS IN METRIC DO NOT SCALE DRAWING



注記 NOTE

1. 適合ハウジング：51142 シリーズ
APPLICABLE HOUSING : 51142 SERIES.

| | | | | |
|-------|-------|------|------------|-------------|
| 19.54 | 21.94 | 13.0 | 51143-0305 | 3 |
| 13.04 | 15.44 | 6.5 | 51143-0205 | 2 |
| 6.54 | 8.94 | — | 51143-0105 | 1 |
| C | B | A | ENG. NO. | NO. OF CKT. |

| | | | | | | | | | | |
|-------------------------|-------|--------|----------------------|-----------|----------|---------|----------|--|--------------------|--|
| 角度 ANGLE | ±3° | | | | | | | | 材料 MATERIAL | PBTP,UL94V-0 (色：灰色) (COLOR : GRAY) |
| 30 以上 OVER | +0.3 | | | | | | | | 仕上げ FINISH | — |
| 10 以上 30 未満 OVER UNDER | +0.25 | A | 変更 REVISD | (JC60546) | D.H | H.H | 96/02/08 | | 適用電線範囲 WIRE RANGE | — |
| 10 未満 UNDER | +0.2 | O | 新規作成 RELEASED | (JC60393) | S.M | H.H | 95/12/5 | | 被覆外径 INS. RANGE | — |
| 一般公差 GENERAL TOLERANCES | | 記号 LTR | 変更内容 REVISION RECORD | | DR. CHK. | 日付 DATE | | | DRAWN BY '95/12/5 | CHK'D BY '96/02/08 |
| | | | | | | | | | H.HASEGAWA | H.HIRAMOTO |
| | | | | | | | | | APP'D BY '96/02/08 | 尺度 SCALE 5 : 1 |
| | | | | | | | | | M.FUKUSHIMA | |

| | |
|---|----------|
| MOLEX-JAPAN CO.,LTD. 日本モレックス株式会社 | |
| REVISE ONLY ON CAD SYSTEM | |
| TITLE 名称 6.5 WIRE TO BOARD CONN. RETAINER | |
| DWG. NO. SD-51143-**-05 | REV A |