



Chipsmall Limited consists of a professional team with an average of over 10 year of expertise in the distribution of electronic components. Based in Hongkong, we have already established firm and mutual-benefit business relationships with customers from,Europe,America and south Asia,supplying obsolete and hard-to-find components to meet their specific needs.

With the principle of “Quality Parts,Customers Priority,Honest Operation,and Considerate Service”,our business mainly focus on the distribution of electronic components. Line cards we deal with include Microchip,ALPS,ROHM,Xilinx,Pulse,ON,Everlight and Freescale. Main products comprise IC,Modules,Potentiometer,IC Socket,Relay,Connector.Our parts cover such applications as commercial,industrial, and automotives areas.

We are looking forward to setting up business relationship with you and hope to provide you with the best service and solution. Let us make a better world for our industry!



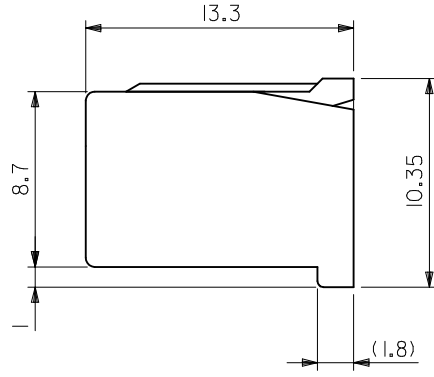
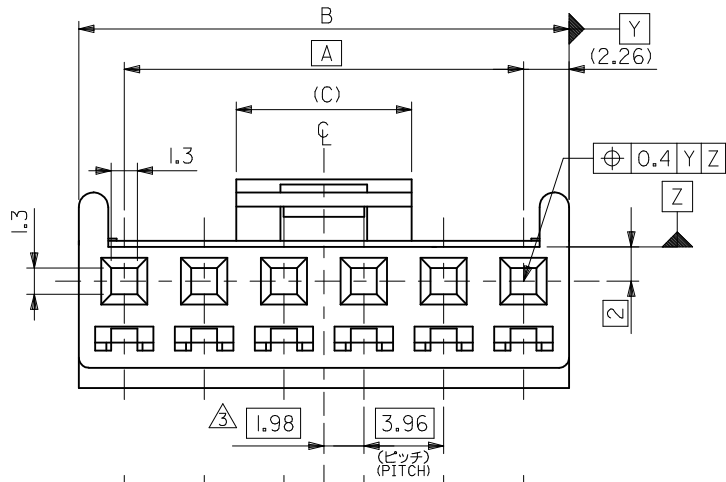
Contact us

Tel: +86-755-8981 8866 Fax: +86-755-8427 6832

Email & Skype: info@chipsmall.com Web: www.chipsmall.com

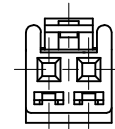
Address: A1208, Overseas Decoration Building, #122 Zhenhua RD., Futian, Shenzhen, China





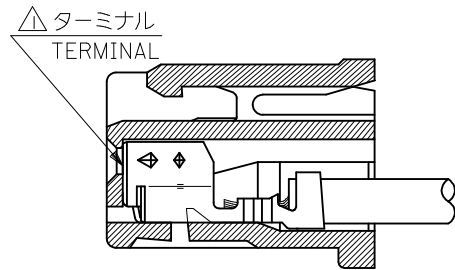
注記 NOTES

- △ 適合ターミナル : 50539-****
APPLICABLE TERMINAL : 50539-****
- 2. 嵌合相手 : 53520,53521,53525 シリーズ
MATE WITH : 53520,53521,53525 SERIES
- △ 3. 偶数極にのみ適用
APPLY FOR EVEN CKT.
- 4. ELV AND RoHS COMPLIANT.
- 5. MATERIAL:PBT
GF:0% UL94V-0



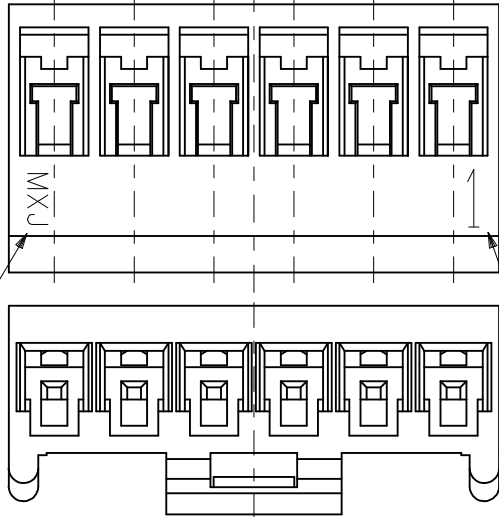
2極に適用
APPLY FOR 2 CKT.

| | | | | |
|------|-------|-------|--------------|---------|
| 8.7 | 59.96 | 55.44 | 51144-150* | 15 |
| | 56 | 51.48 | -140* | 14 |
| | 52.04 | 47.52 | -130* | 13 |
| | 48.08 | 43.56 | -120* | 12 |
| | 44.12 | 39.6 | -110* | 11 |
| | 40.16 | 35.64 | -100* | 10 |
| | 36.2 | 31.68 | -090* | 9 |
| | 32.24 | 27.72 | -080* | 8 |
| | 28.28 | 23.76 | -070* | 7 |
| | 24.32 | 19.8 | -060* | 6 |
| | 20.36 | 15.84 | -050* | 5 |
| | 16.4 | 11.88 | -040* | 4 |
| 8.7 | 12.44 | 7.92 | -030* | 3 |
| 4.74 | 8.48 | 3.96 | 51144-020* | 2 |
| (C) | B | A | MATERIAL NO. | CKT. 極数 |



トレードマーク
TRADE MARK

回路番号
CIRCUIT NO.



| | | | | | | | | |
|---|--|-------|-----------------------------|--------------------|---|------------------------|--------------------------|--|
| REVISED EC NO: J2009-0817 DRWN:YA0YAGI 2009/02/19 CHKD:NUKITA 2009/02/20 APPR:NUKITA 2009/02/20 | GENERAL TOLERANCES (UNLESS SPECIFIED) | | DIMENSION STYLE MM ONLY | | SCALE --- | DESIGN UNITS METRIC | MODEL NO. 51144-***0* | |
| | 10 UNDER | ±0.2 | DRAWN BY T. TSUBOI | DATE 2002/10/25 | TITLE 3.96 WIRE TO BOARD CONNECTOR HOUSING | | | |
| | 10 OVER 30 UNDER | ±0.25 | CHECKED BY K. ASAKAWA | DATE 2002/10/25 | MATERIAL NO. SEE SHEET 2 | | | |
| | 30 OVER | ±0.3 | APPROVED BY T. YAMAGUCHI | DATE 2002/10/25 | DOCUMENT NO. SD-51144-001 | | | |
| | ANGULAR ±3 ° DRAFT WHERE APPLICABLE MUST REMAIN WITHIN DIMENSIONS | | SIZE A3 | | SHEET NO. 1 OF 2 | | | |

| PINK | ORANGE | BROWN | GREEN | GRAY | BLUE | YELLOW | RED | BLACK | WHITE | COLOR |
|--------------|--------------|--------------|--------------|--------------|--------------|--------------|--------------|--------------|--------------|-------|
| | | | | | | | | | | 15 |
| | | | | | | | | | | 14 |
| | | | | | | | | | 51144-1300 | 13 |
| | | | | | | | | | 51144-1200 | 12 |
| | | | | | | | | | 51144-1100 | 11 |
| | | | | | | | | | 51144-1000 | 10 |
| | | | | | | | | | 51144-0900 | 9 |
| | | | | | | | | | 51144-0800 | 8 |
| | | | | | | | 51144-0702 | | 51144-0700 | 7 |
| | | | | | | | | | 51144-0600 | 6 |
| | | | | | | | 51144-0502 | | 51144-0500 | 5 |
| | | | | | | | | | 51144-0400 | 4 |
| 51144-0309 | 51144-0308 | | 51144-0306 | 51144-0305 | 51144-0304 | 51144-0303 | 51144-0302 | 51144-0301 | 51144-0300 | 3 |
| | | | | | | | | | 51144-0200 | 2 |
| MATERIAL NO. | MATERIAL NO. | MATERIAL NO. | MATERIAL NO. | MATERIAL NO. | MATERIAL NO. | MATERIAL NO. | MATERIAL NO. | MATERIAL NO. | MATERIAL NO. | CKT. |

| | | | | | | | |
|---|---------------------------------------|--|-----------------------------------|--------------------|---|---------------------|-----------|
| REVISED EC NO: J2009-0817 DRWN: YA0YAGI CHKD: NUKITA APPR: NUKITA | GENERAL TOLERANCES (UNLESS SPECIFIED) | | DIMENSION STYLE MM ONLY | | SCALE --- | 51144-***0* | MODEL NO. |
| | 10 UNDER | ±0.2 | DRAWN BY T. TSUBOI | DATE 2002/10/25 | TITLE 3.96 WIRE TO BOARD CONNECTOR HOUSING | | |
| | 10 OVER 30 UNDER | ±0.25 | CHECKED BY K. ASAKAWA | DATE 2002/10/25 | MATERIAL NO. | | |
| | 30 OVER | ±0.3 | APPROVED BY T. YAMAGUCHI | DATE 2002/10/25 | DOCUMENT NO. SD-51144-001 | | |
| ANGULAR ±3 ° | | DRAFT WHERE APPLICABLE MUST REMAIN WITHIN DIMENSIONS | | SEE TABLE | | SHEET NO. 2 OF 2 | |
| THIS DRAWING CONTAINS INFORMATION THAT IS PROPRIETARY TO MOLEX INCORPORATED AND SHOULD NOT BE USED WITHOUT WRITTEN PERMISSION | | | | MATERIAL NO. | | | |