



Chipsmall Limited consists of a professional team with an average of over 10 year of expertise in the distribution of electronic components. Based in Hongkong, we have already established firm and mutual-benefit business relationships with customers from,Europe,America and south Asia,supplying obsolete and hard-to-find components to meet their specific needs.

With the principle of “Quality Parts,Customers Priority,Honest Operation,and Considerate Service”,our business mainly focus on the distribution of electronic components. Line cards we deal with include Microchip,ALPS,ROHM,Xilinx,Pulse,ON,Everlight and Freescale. Main products comprise IC,Modules,Potentiometer,IC Socket,Relay,Connector.Our parts cover such applications as commercial,industrial, and automotives areas.

We are looking forward to setting up business relationship with you and hope to provide you with the best service and solution. Let us make a better world for our industry!



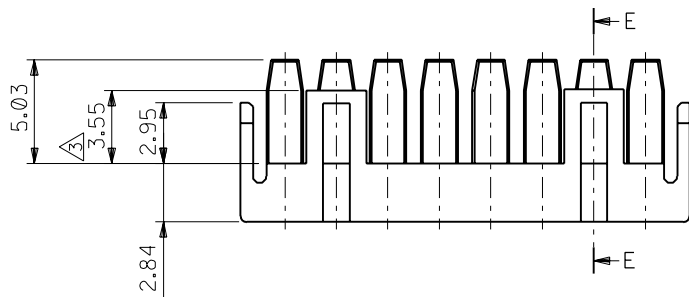
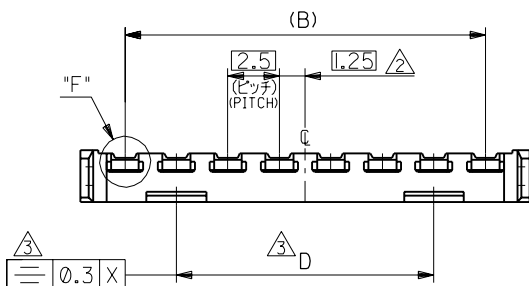
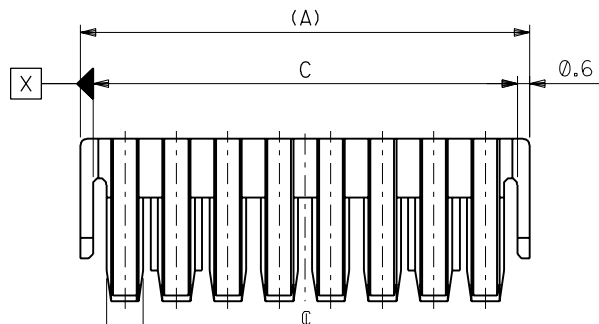
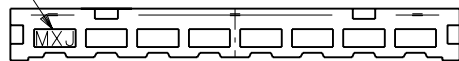
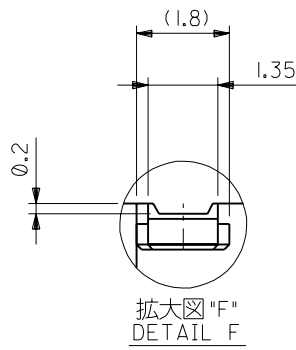
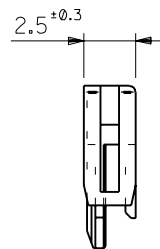
Contact us

Tel: +86-755-8981 8866 Fax: +86-755-8427 6832

Email & Skype: info@chipsmall.com Web: www.chipsmall.com

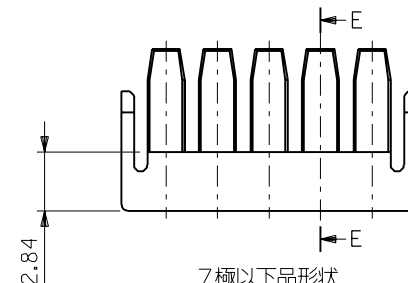
Address: A1208, Overseas Decoration Building, #122 Zhenhua RD., Futian, Shenzhen, China



トレードマーク
TRADE MARK断面 E-E
SECT.E-E
(8極以上)
(OVER 8CKT.)断面 E-E
SECT.E-E
(7極以下)
(UNDER 7CKT.)拡大図 "F"
DETAIL F

注記 NOTES

1. 適合ターミナル : 50752-8*00
APPLICABLE TERMINAL : 50752-8*00
適合ハウジング : 51163-**-00
APPLICABLE HOUSING : 51163-**-00
2. 偶数極の製品に適用。
APPLY EVEN CIRCUIT PRODUCTS.
3. 8~15極品に適用。
APPLY 8~15 CKT PRODUCTS.



7極以下品形状

SHAPE OF UNDER 7CKT.

12.5	38.1	35	39.3	51164-1505	15
↑	35.6	32.5	36.8	↑	-1405
	33.1	30	34.3		-1305
	30.6	27.5	31.8		-1205
	28.1	25	29.3		-1105
	25.6	22.5	26.8		-1005
↓	23.1	20	24.3		-0905
12.5	20.6	17.5	21.8		-0805
X	18.1	15	19.3		-0705
	15.6	12.5	16.8		-0605
	13.1	10	14.3		-0505
	10.6	7.5	11.8		-0405
	8.1	5	9.3		-0305
	5.6	2.5	6.8	51164-0205	2
D	C	(B)	(A)	ENG. NO.	極数 NO. OF CKT.

				材料 MATERIAL PBTP, UL94V-0 (灰色 GRAY)		molex MOLEX-JAPAN CO.,LTD. 日本モレックス株式会社	
				仕上げ FINISH —		REVISE ONLY ON CAD SYSTEM	
				適用電線範囲 WIRE RANGE —		TITLE 名称	
				被覆外径 INS. RANGE —		2.5 WIRE TO BOARD CONN. RETAINER	
				DRAWN BY '97/11/26 S.AIHARA		CHK'D BY '97/11/27 T.ITO	
				APP'D BY '97/11/27 M.FUKUSHIMA		尺度 SCALE 4 : 1	
				角 度 ANGLE ±3°		DWG. NO.	
				30 以上 OVER ±0.3		SD-51164-**-05	
				10 以上 OVER 30 未満 UNDER ±0.25		REV	
				10 未満 UNDER ±0.2		0	
一般公差 GENERAL TOLERANCES				記号 LTR	新規作成 PROPOSED (JC80469)	変更内容 REVISION RECORD	日付 DATE