



Chipsmall Limited consists of a professional team with an average of over 10 year of expertise in the distribution of electronic components. Based in Hongkong, we have already established firm and mutual-benefit business relationships with customers from,Europe,America and south Asia,supplying obsolete and hard-to-find components to meet their specific needs.

With the principle of “Quality Parts,Customers Priority,Honest Operation,and Considerate Service”,our business mainly focus on the distribution of electronic components. Line cards we deal with include Microchip,ALPS,ROHM,Xilinx,Pulse,ON,Everlight and Freescale. Main products comprise IC,Modules,Potentiometer,IC Socket,Relay,Connector.Our parts cover such applications as commercial,industrial, and automotives areas.

We are looking forward to setting up business relationship with you and hope to provide you with the best service and solution. Let us make a better world for our industry!



## Contact us

Tel: +86-755-8981 8866 Fax: +86-755-8427 6832

Email & Skype: [info@chipsmall.com](mailto:info@chipsmall.com) Web: [www.chipsmall.com](http://www.chipsmall.com)

Address: A1208, Overseas Decoration Building, #122 Zhenhua RD., Futian, Shenzhen, China



DWG. NO. SD-51201-002

F

D

V

C

B

DO NOT SCALE DRAWING

8

7

6

5

4

3

2

1

F

E

D

C

B

A  
51201002.S01

EC NO.  
DRWN:  
CHK:  
APPR:

EC NO.  
DRWN:  
CHK:  
APPR:

REVISED '04/03/12  
EC NO. J2004-3078  
DRWN: S.AKIYAMA  
CHK: N.MATSUURA  
APPR: J.MIYAZAWA

B

REVISED '98/11/06  
EC NO. JD90675  
DRWN: Y.TETSUKA  
CHK: S.AKIYAMA/YO.ITO  
APPR: H.IKESUGI

A

RELEASED '98/09/28  
EC NO. JD90457  
DRWN: Y.TETSUKA  
CHK: S.AKIYAMA/YO.ITO  
APPR: H.IKESUGI

0

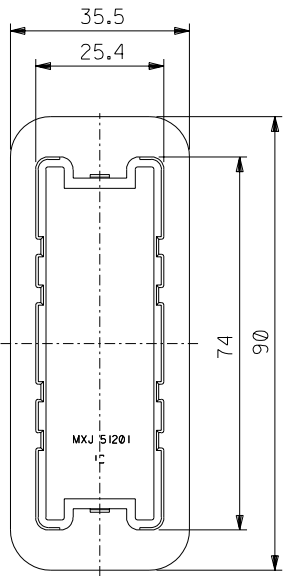
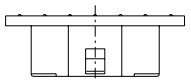
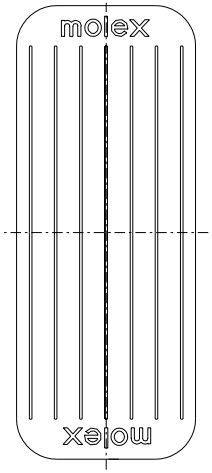
REV DESCRIPTION

MATERIAL  
材料 ABS樹脂 UL94V-2  
色:黒色  
COLOR : BLACK

FINISH  
仕上り

WIRE RANGE  
適用電線範囲

INS. RANGE  
被覆外径



58691-0020	B	51201-0001	51201-0001
58691-0010	A		
適用レセプタクルシェルアッセンブリ APPLICABLE RECEPTACLE SHELL ASS'Y	TYPE	MATERIAL NO.	MODEL NO.

GENERAL TOLERANCES:  
(UNLESS SPECIFIED)  
一般公差

10 UNDER  
未満 ±0.2

10 OVER 30 UNDER  
以上 未満 ±0.25

30 OVER  
以上 ±0.3

ANGLE 角度 ±3°

SCALE  
1-1

DESIGN UNITS  
mm INCH

THIRD ANGLE  
PROJECTION

DIMENSIONS:  
mm INCH mm ONLY SHT REV  
REVISE ON  
CAD ONLY

DRAWN BY & DATE  
Y.TETSUKA '98/09/28

CHECKED BY & DATE  
S.Akiyama/Y.O.Ito '98/09/28

APPROVED BY & DATE  
H.Ikessugi '98/09/28

CAD FILENAME  
51201002.S01

TITLE: POWER CONN. 36P  
REC.DUST COVER  
FOR 58691

MOLEX INCORPORATED

MATERIAL NO.  
SEE CHART

DRAWING NO.  
SD-51201-002

SHEET NO.  
1 OF 1

THIS DRAWING CONTAINS INFORMATION THAT IS PROPRIETARY TO MOLEX  
INCORPORATED AND SHOULD NOT BE USED WITHOUT WRITTEN PERMISSION.

SIZE  
B

8

7

6

5

4

3

2

EN-02J(097) MXJ-54