



Chipsmall Limited consists of a professional team with an average of over 10 year of expertise in the distribution of electronic components. Based in Hongkong, we have already established firm and mutual-benefit business relationships with customers from,Europe,America and south Asia,supplying obsolete and hard-to-find components to meet their specific needs.

With the principle of "Quality Parts,Customers Priority,Honest Operation,and Considerate Service",our business mainly focus on the distribution of electronic components. Line cards we deal with include Microchip,ALPS,ROHM,Xilinx,Pulse,ON,Everlight and Freescale. Main products comprise IC,Modules,Potentiometer,IC Socket,Relay,Connector.Our parts cover such applications as commercial,industrial, and automotives areas.

We are looking forward to setting up business relationship with you and hope to provide you with the best service and solution. Let us make a better world for our industry!



Contact us

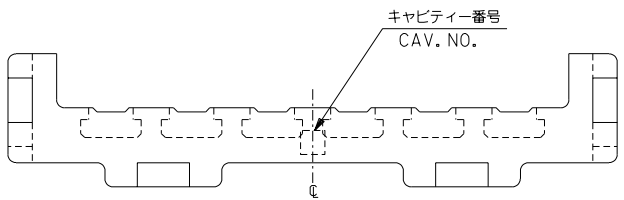
Tel: +86-755-8981 8866 Fax: +86-755-8427 6832

Email & Skype: info@chipsmall.com Web: www.chipsmall.com

Address: A1208, Overseas Decoration Building, #122 Zhenhua RD., Futian, Shenzhen, China

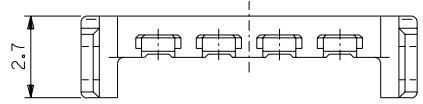
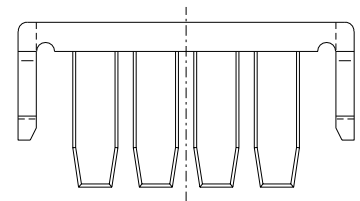


DWG. NO. SD-51217-003

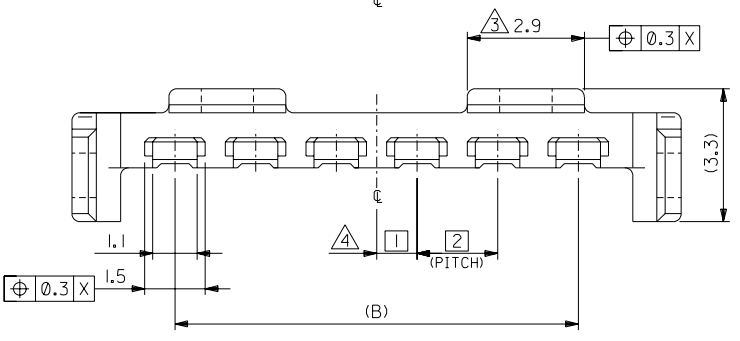
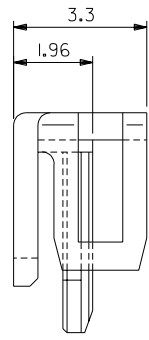
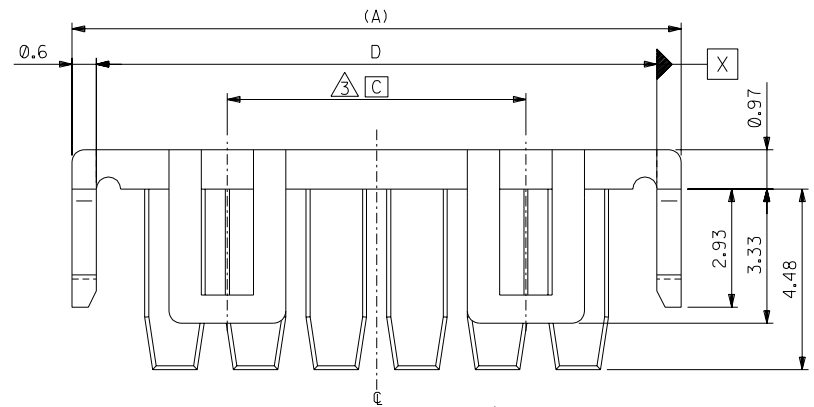


注記 NOTES

1. 適合ターミナル : 59370シリーズ
APPLICABLE TERMINAL : 59370 SERIES
2. 適合ハウジング : 51216シリーズ
APPLICABLE HOUSING : 51216 SERIES
- ③ 5~15種に適用。
APPLY 5-15 CIRCUITS.
- ④ 偶数極に適用。
APPLY EVEN CIRCUIT PRODUCTS.



4極以下品形状
DESIGN OF UNDER 4CKTS.
(SCALE 6:1)



31.9	7.4	28	33.1	51217-1505	15
29.9		26	31.1	-1405	14
27.9		24	29.1	-1305	13
25.9		22	27.1	-1205	12
23.9		20	25.1	-1105	11
21.9		18	23.1	-1005	10
19.9		16	21.1	-0905	9
17.9		14	19.1	-0805	8
15.9		12	17.1	-0705	7
13.9		10	15.1	-0605	6
11.9	7.4	8	13.1	-0505	5
9.9		6	11.1	-0405	4
7.9		4	9.1	-0305	3
5.9		2	7.1	51217-0205	2
D	C	B	A	MATERIAL NO.	CKT.

DO NOT SCALE DRAWING

EC NO. DRWN: CHK: APPR:	EC NO. DRWN: CHK: APPR:	EC NO. DRWN: CHK: APPR:	REVISED	MATERIAL 材料	GENERAL TOLERANCES: (UNLESS SPECIFIED) 一般公差	51217-**-05		MODEL NO.		DIMENSIONS:		SHT	REV
			EC NO. J2004-1674 DRWN:K.SETO '03/12/22 CHK: H.TAKASE APPR:J.MIYAZAWA 12/22			PBTP, UL94V-0 [色:灰色] [COLOR: GRAY]	SCALE 8:1	DESIGN UNITS <input checked="" type="checkbox"/> mm <input type="checkbox"/> INCH	<input checked="" type="checkbox"/> THIRD ANGLE <input type="checkbox"/> PROJECTION	<input type="checkbox"/> mm <input type="checkbox"/> INCH	<input type="checkbox"/> mm <input type="checkbox"/> mm	<input checked="" type="checkbox"/> mm <input type="checkbox"/> ONLY	
			RELEASED	FINISH 仕上げ	WIRE RANGE 適用線径範囲	ANGLE 角度	DRAWN BY & DATE T.YASUI '00/ 2/22	TITLE: 2.0 mm WIRE TO BOARD CONN. RETAINER					
			EC NO. JC2000-0550 DRWN:T.YASUI '00/2/22 CHK: T.YAMAGUCHI APPR:M.FUKUSHIMA 2/22				//						10 UNDER 未満 ±0.2
			0		30 UNDER 未満 ±0.25	30 OVER 以上 ±0.3	APPROVED BY & DATE M.FUKUSHIMA '00/ 2/22	MOLEX MOLEX INCORPORATED					
			REV	INS. RANGE 被覆外径	//	±3°	CAD FILENAME 51217003.S01						MATERIAL NO. SEE CHART

THIS DRAWING CONTAINS INFORMATION THAT IS PROPRIETARY TO MOLEX INCORPORATED AND SHOULD NOT BE USED WITHOUT WRITTEN PERMISSION.