



Chipsmall Limited consists of a professional team with an average of over 10 year of expertise in the distribution of electronic components. Based in Hongkong, we have already established firm and mutual-benefit business relationships with customers from,Europe,America and south Asia,supplying obsolete and hard-to-find components to meet their specific needs.

With the principle of “Quality Parts,Customers Priority,Honest Operation,and Considerate Service”,our business mainly focus on the distribution of electronic components. Line cards we deal with include Microchip,ALPS,ROHM,Xilinx,Pulse,ON,Everlight and Freescale. Main products comprise IC,Modules,Potentiometer,IC Socket,Relay,Connector.Our parts cover such applications as commercial,industrial, and automotives areas.

We are looking forward to setting up business relationship with you and hope to provide you with the best service and solution. Let us make a better world for our industry!



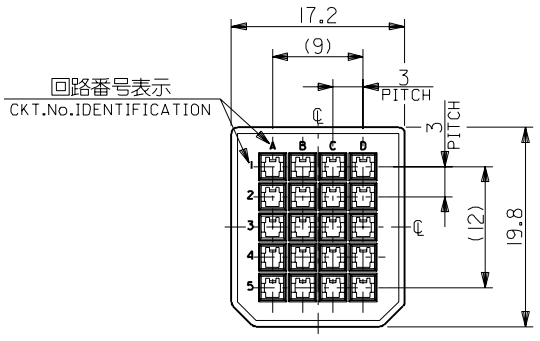
Contact us

Tel: +86-755-8981 8866 Fax: +86-755-8427 6832

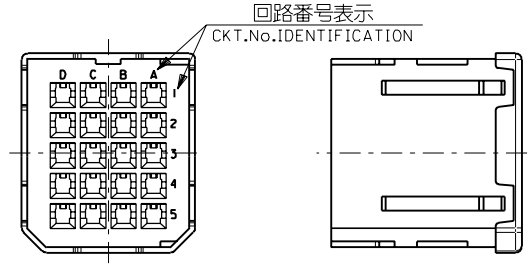
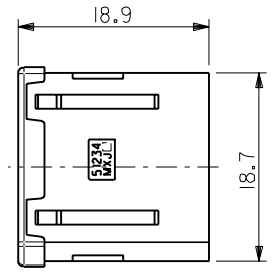
Email & Skype: info@chipsmall.com Web: www.chipsmall.com

Address: A1208, Overseas Decoration Building, #122 Zhenhua RD., Futian, Shenzhen, China

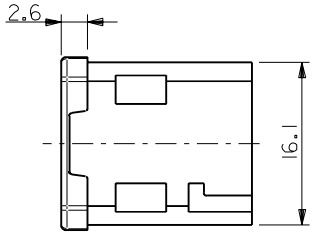




嵌合側
MATING SIDE



電線挿入側
WIRE SIDE



注記
NOTES

1. 材質
MATERIAL
ガラス入りPBT樹脂 UL94V-0 色:黒
HOUSING : PBT G.F. UL94V-0 COLOR : BLACK
2. 適用端子 : 56116-8*90 , 56117-8*90
56118-8*90 , 56119-8*90
APPLICABLE CRIMP PIN : 56116-8*90 , 56117-8*90
56118-8*90 , 56119-8*90
3. 適用シエルボディ : 56380-2000
APPLICABLE SHELL BODY : 56380-2000
4. 適用シエルカバー : 56381-2000
APPLICABLE SHELL COVER : 56381-2000
5. 嵌合相手 : 51238-201*
MEET WITH : 51238-201*

<誤嵌合防止キー(極性)タイプ> <POLARITY KEY TYPE>

51234-2001	51234-2002	51234-2003	51234-2004	51234-2005
STANDARD TYPE	A TYPE	B TYPE	C TYPE	D TYPE

C-4	D	51234-2005	51234-**0*	20
C-3	C	51234-2004		
B-3	B	51234-2003		
B-2	A	51234-2002		
—	STANDARD	51234-2001		
POLARITY POSITION (CIRCUIT No.)	POLARITY TYPE	MATERIAL No.	MODEL No.	CIRCUIT

EC NO. DRWN: CHK: APPR:	EC NO. DRWN: CHK: APPR:	EC NO. DRWN: CHK: APPR:	REVISED 01/10/04 EC NO. J2002-0786 DRWN: S.AKIYAMA CHK: J.MIYAZAWA APPR: Y.O.ITO	RELEASED 01/02/09 EC NO. JD2001-1040 DRWN: S.AKIYAMA CHK: J.MIYAZAWA APPR: H.IKESUGI	MATERIAL 材料 注記参照 SEE NOTES	GENERAL TOLERANCES: (UNLESS SPECIFIED) 一般公差	SCALE 2-1	DESIGN UNITS mm INCH	THIRD ANGLE PROJECTION	DIMENSIONS: mm INCH	SHT	REV
			A	0	FINISH 仕上げ —	10 UNDER 未満 ±0.2	2-1	mm INCH	mm ONLY	mm ONLY		
					WIRE RANGE 適用電線範囲 —	10 OVER 30 UNDER 未満 ±0.25	DRAWN BY & DATE S. Akiyama 1/01/25			TITLE: COMPACT ROBOT CONN. (CRC) PLUG PIN HS'G		
					INS. RANGE 被覆外径 —	30 OVER 以上 ±0.3	CHECKED BY & DATE J. Miyazawa / Y. Ito			MATERIAL NO. SEE CHART	DRAWING NO. SD-51234-005	SHEET NO. 1 OF 1
						ANGLE 角度 ±3°	APPROVED BY & DATE S. Akiyama			MOLEX INCORPORATED		
							CAD FILE NAME 51234005.S01					
							THIS DRAWING CONTAINS INFORMATION THAT IS PROPRIETARY TO MOLEX INCORPORATED AND SHOULD NOT BE USED WITHOUT WRITTEN PERMISSION.					SIZE B