



Chipsmall Limited consists of a professional team with an average of over 10 year of expertise in the distribution of electronic components. Based in Hongkong, we have already established firm and mutual-benefit business relationships with customers from,Europe,America and south Asia,supplying obsolete and hard-to-find components to meet their specific needs.

With the principle of “Quality Parts,Customers Priority,Honest Operation,and Considerate Service”,our business mainly focus on the distribution of electronic components. Line cards we deal with include Microchip,ALPS,ROHM,Xilinx,Pulse,ON,Everlight and Freescale. Main products comprise IC,Modules,Potentiometer,IC Socket,Relay,Connector.Our parts cover such applications as commercial,industrial, and automotives areas.

We are looking forward to setting up business relationship with you and hope to provide you with the best service and solution. Let us make a better world for our industry!



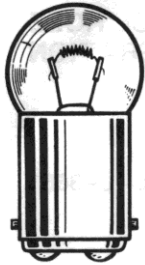
Contact us

Tel: +86-755-8981 8866 Fax: +86-755-8427 6832

Email & Skype: info@chipsmall.com Web: www.chipsmall.com

Address: A1208, Overseas Decoration Building, #122 Zhenhua RD., Futian, Shenzhen, China





G-6
DOUBLE CONTACT
BAYONET BASE

See lamp ratings
on page K.

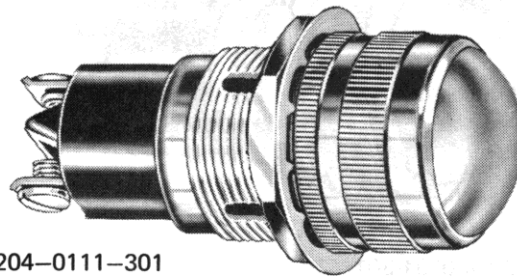
Large Incandescent Indicators

FOR MOUNTING IN 1" CLEARANCE HOLE
FOR 6 TO 32V OPERATION

These series indicator lights meet or exceed requirements of MIL-L-3661.

For materials and finishes of products in this group, see page 38D.

Recognized under the component
program of Underwriters'
Laboratories Inc.
75W., 125V.



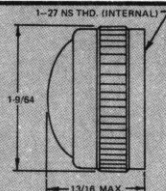
51-3204-0111-301
Convex lens

WITH SCREW-ON LENS CAPS

51 SERIES

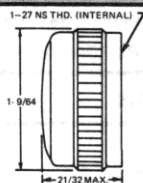
BASE PART NUMBERS

CAP PART NUMBERS



CONVEX

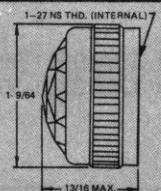
51-0111-300 back frosted
51-0131-300 unfrosted



FLAT

51-0211-300 back frosted
51-0231-300 unfrosted

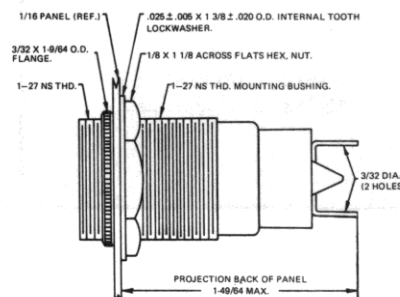
For legends on flat faced lens, see page P.



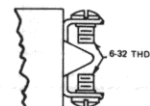
FACETED

51-0431-300 unfrosted

fixed solder



fixed screw



51-3406-01-301

51-3206-01-301

COMPLETE ASSEMBLY PART NUMBERS

51-3404-0111-301
51-3404-0131-301

51-3204-0111-301
51-3204-0131-301

51-3404-0211-301
51-3404-0231-301

51-3204-0211-301
51-3204-0231-301

51-3404-0431-301

51-3204-0431-301

Part numbers shown in gray are normally
in inventory at your Dialight Distributor.

Part numbers listed in this catalog designate products with RED lens.
For ordering lens colors other than red, consult chart on page 2D.