



Chipsmall Limited consists of a professional team with an average of over 10 year of expertise in the distribution of electronic components. Based in Hongkong, we have already established firm and mutual-benefit business relationships with customers from,Europe,America and south Asia,supplying obsolete and hard-to-find components to meet their specific needs.

With the principle of “Quality Parts,Customers Priority,Honest Operation,and Considerate Service”,our business mainly focus on the distribution of electronic components. Line cards we deal with include Microchip,ALPS,ROHM,Xilinx,Pulse,ON,Everlight and Freescale. Main products comprise IC,Modules,Potentiometer,IC Socket,Relay,Connector.Our parts cover such applications as commercial,industrial, and automotives areas.

We are looking forward to setting up business relationship with you and hope to provide you with the best service and solution. Let us make a better world for our industry!



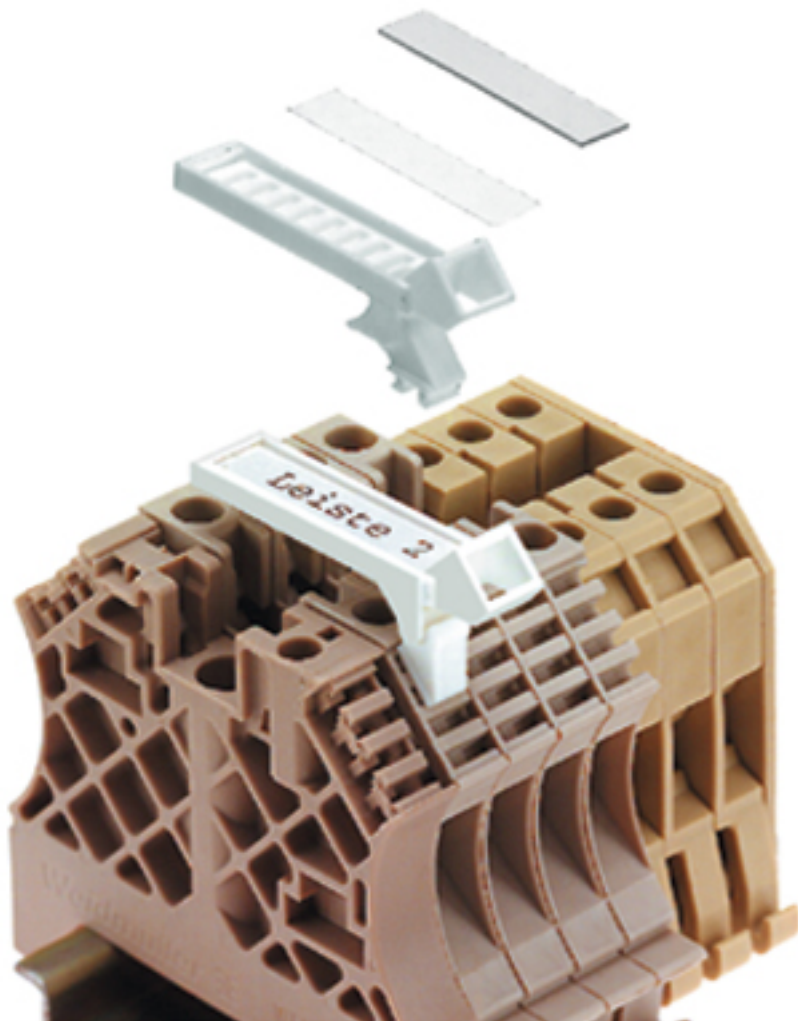
## Contact us

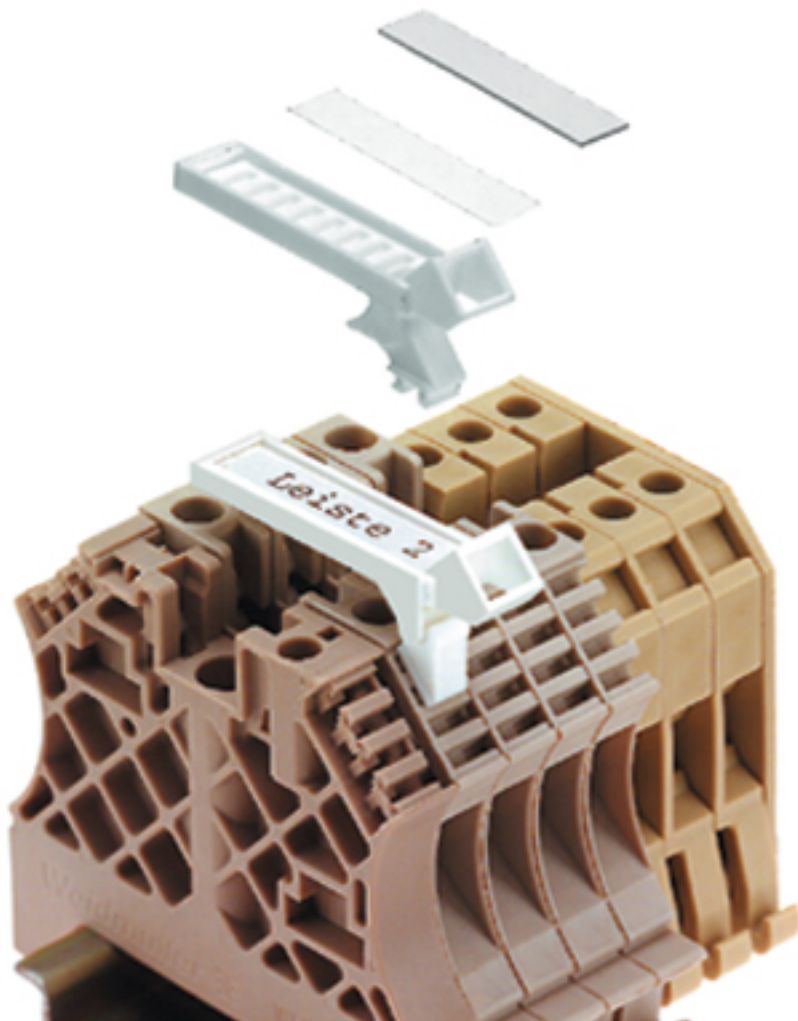
Tel: +86-755-8981 8866 Fax: +86-755-8427 6832

Email & Skype: info@chipsmall.com Web: www.chipsmall.com

Address: A1208, Overseas Decoration Building, #122 Zhenhua RD., Futian, Shenzhen, China







#### General ordering data

Order No.	0517960000
Part designation	SCHT 7
Version	Connector markers, L x W: 39.3 x 8 mm, Polyamide 66, white
EAN	4008190001742
Qty.	20 pc(s).

#### Markings

Can be labelled with thermal transfer printers	No
Can be printed with plotter	No
Can be written with dot-matrix printer	No
Can be written with laser printer	No
Function	Tag carrier for connector markers
Length	39.3 mm
Material	Polyamide 66
Material colour	white
Max. temperature, continuous	100 °C

### Markings

Max. temperature, transient	80 °C
Min. temperature, continuous	-40 °C
Orientation of print	horizontal and vertical
Pitch	7 mm
Printed characters	without
Speed marking laser	No
Type of printing	Neutral
UL 94 flammability class	V2
Width	8 mm

### Approvals

Approvals institutes	n.a.
----------------------	------

### Classifications

ETIM 2.0	EC000761
ETIM 3.0	EC000761
eClass 4.1	24-19-02-19
eClass 5.0	27-14-11-37
eClass 5.1	27-14-11-37

### Similar products

Order No.	Part designation	Version
0242660000	SCHT 1	Connector markers, L x W: 10.5 x 6.3 mm, Polyamide 66, beige
0245560000	SCHT 3	Connector markers, L x W: 13.8 x 6 mm, Polyamide 66, beige
1359360000	LABL CARRIER SchT7/2	Connector markers, L x W: 38.8 x 8 mm, Polyamide 66, white
0686760000	SCHT 8	Connector markers, L x W: 39 x 6 mm, Polyamide 66, white
1278460000	SCHT 9/4	Connector markers, L x W: 32 x 4 mm, Polyamide 66, beige
1269060000	SCHT 14/6	Connector markers, L x W: 44.3 x 6 mm, Polyamide 66, beige