



Chipsmall Limited consists of a professional team with an average of over 10 year of expertise in the distribution of electronic components. Based in Hongkong, we have already established firm and mutual-benefit business relationships with customers from,Europe,America and south Asia,supplying obsolete and hard-to-find components to meet their specific needs.

With the principle of “Quality Parts,Customers Priority,Honest Operation,and Considerate Service”,our business mainly focus on the distribution of electronic components. Line cards we deal with include Microchip,ALPS,ROHM,Xilinx,Pulse,ON,Everlight and Freescale. Main products comprise IC,Modules,Potentiometer,IC Socket,Relay,Connector.Our parts cover such applications as commercial,industrial, and automotives areas.

We are looking forward to setting up business relationship with you and hope to provide you with the best service and solution. Let us make a better world for our industry!



Contact us

Tel: +86-755-8981 8866 Fax: +86-755-8427 6832

Email & Skype: info@chipsmall.com Web: www.chipsmall.com

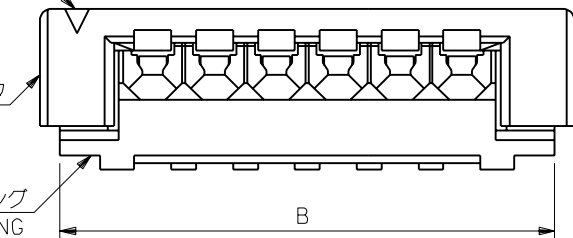
Address: A1208, Overseas Decoration Building, #122 Zhenhua RD., Futian, Shenzhen, China



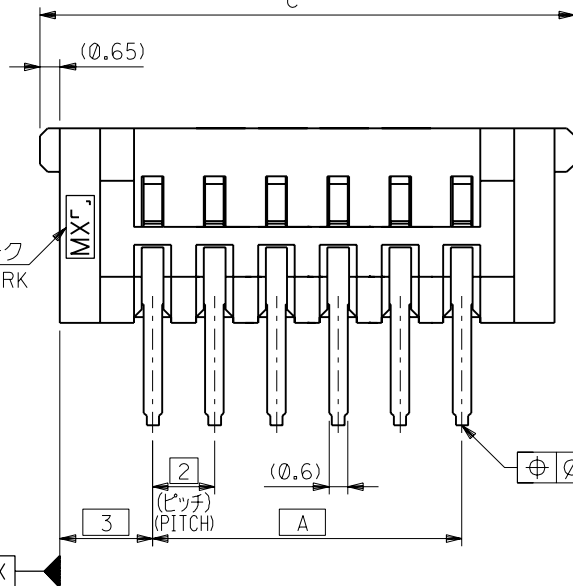
回路番号1用マーク
CKT.NO.1 MARK

アクチュエータ
ACTUATOR

ハウジング
HOUSING

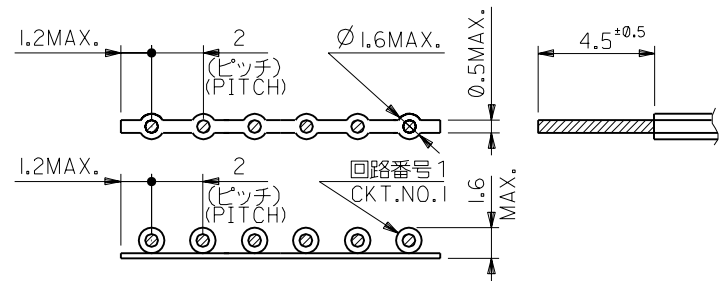
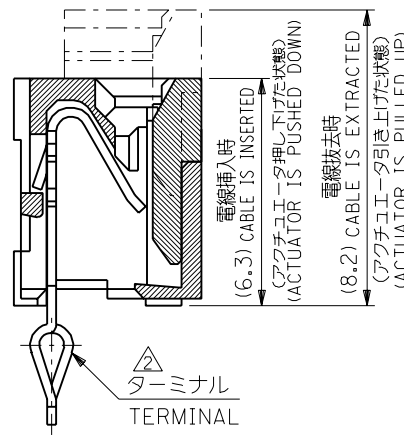


トレードマーク
TRADE MARK

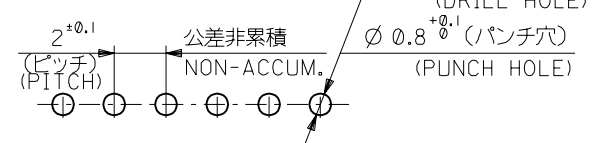


注記
NOTES

- 1 使用材料 : MATERIAL
 ハウジング : PBT (ガラス繊維入), UL94V-0. (白)
 HOUSING : PBT (GLASS FILLED), UL94V-0. (WHITE)
 アクチュエータ : PBT (ガラス繊維入), UL94V-0. (白)
 ACTUATOR : PBT (GLASS FILLED), UL94V-0. (WHITE)
 ターミナル : リン青銅、錫メッキ (t=0.25)
 TERMINAL : PHOS-BRO, PRE-TINNED (t=0.25)
 2極のみキンク無しとする。
 FOR CKT 2 MUST NOT BE KINK



電線適合寸法
APPLICABLE WIRE



基板取付穴推奨寸法 (t=1.6)
RECOMMENDED P.C.BOARD DIM.

| | | | | |
|------|----|----|------------|------------|
| 39.3 | 38 | 32 | 52147-1710 | 17 |
| 37.3 | 36 | 30 | -1610 | 16 |
| 35.3 | 34 | 28 | -1510 | 15 |
| 33.3 | 32 | 26 | -1410 | 14 |
| 31.3 | 30 | 24 | -1310 | 13 |
| 29.3 | 28 | 22 | -1210 | 12 |
| 27.3 | 26 | 20 | -1110 | 11 |
| 25.3 | 24 | 18 | -1010 | 10 |
| 23.3 | 22 | 16 | -0910 | 9 |
| 21.3 | 20 | 14 | -0810 | 8 |
| 19.3 | 18 | 12 | -0710 | 7 |
| 17.3 | 16 | 10 | -0610 | 6 |
| 15.3 | 14 | 8 | -0510 | 5 |
| 13.3 | 12 | 6 | -0410 | 4 |
| 11.3 | 10 | 4 | -0310 | 3 |
| 9.3 | 8 | 2 | 52147-0210 | 2 |
| C | B | A | ENG.NO. | 極致 CKT. |

| | | | | | |
|-------------------------------|--|---|--|--|--|
| 材料 MATERIAL | | 注記参照 SEE NOTES | | molex MOLEX-JAPAN CO.,LTD. 日本モレックス株式会社 | |
| 仕上げ FINISH | | 適用電線範囲 AWG #26 WIRE RANGE (錫コート線) (TOP-COAT WIRE) | | REVISE ONLY ON CAD SYSTEM | |
| 被覆外径 INS. RANGE | | 図中参照 SEE DRAWING | | TITLE 名称 2.0 NEW MINI WIRE TRAP CONN.(ST.) | |
| DRAWN BY '94/9/28 T.NIITSU | | CHK'D BY '94/9/28 Y.M.H.HIRAMOTO | | DWG. NO. SD-52147-**-10 | |
| REV. C | | DR. '94/9/28 M.FUKUSHIMA | | REV C | |
| 角度 ANGLE | | ±3° | | 一般公差 GENERAL TOLERANCES | |
| 30以上 OVER | | ±0.3 | | 記号 LTR | |
| 10以上 30未満 UNDER | | ±0.25 | | 変更内容 REVISION RECORD | |
| 10未満 UNDER | | ±0.2 | | DR. CHK. 日付 DATE | |
| C | | 再作図&変更 (J4079)II REDRAWN & REVISED | | APP'D BY '94/9/28 尺度 SCALE | |