



Chipsmall Limited consists of a professional team with an average of over 10 year of expertise in the distribution of electronic components. Based in Hongkong, we have already established firm and mutual-benefit business relationships with customers from,Europe,America and south Asia,supplying obsolete and hard-to-find components to meet their specific needs.

With the principle of “Quality Parts,Customers Priority,Honest Operation,and Considerate Service”,our business mainly focus on the distribution of electronic components. Line cards we deal with include Microchip,ALPS,ROHM,Xilinx,Pulse,ON,Everlight and Freescale. Main products comprise IC,Modules,Potentiometer,IC Socket,Relay,Connector.Our parts cover such applications as commercial,industrial, and automotives areas.

We are looking forward to setting up business relationship with you and hope to provide you with the best service and solution. Let us make a better world for our industry!



## Contact us

Tel: +86-755-8981 8866 Fax: +86-755-8427 6832

Email & Skype: info@chipsmall.com Web: www.chipsmall.com

Address: A1208, Overseas Decoration Building, #122 Zhenhua RD., Futian, Shenzhen, China

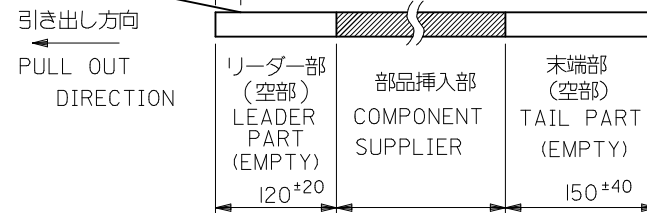
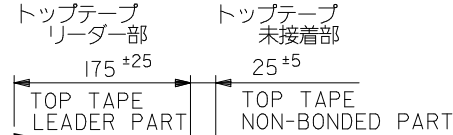


注記 NOTES

1. 製品番号 52746-\*\*\*39 の梱包状態はアクチュエータがロックした状態とする。  
 詳細寸法については図面 SD-52746-025 を参照下さい。  
 IN THE PACKAGE,ACTUATOR OF PART NO.52746-\*\*\*39 SHOULD BE LOCKED  
 RE DETAILED DIMENSIONS,SEE SD-52746-025

2. 梱包数量：1000個/リール  
 NUMBER OF CONNECTORS:1000PCS/REEL

3. リードテープ長さ LEAD TAPE LENGTH

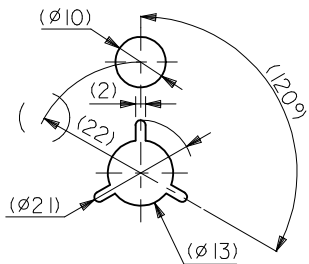
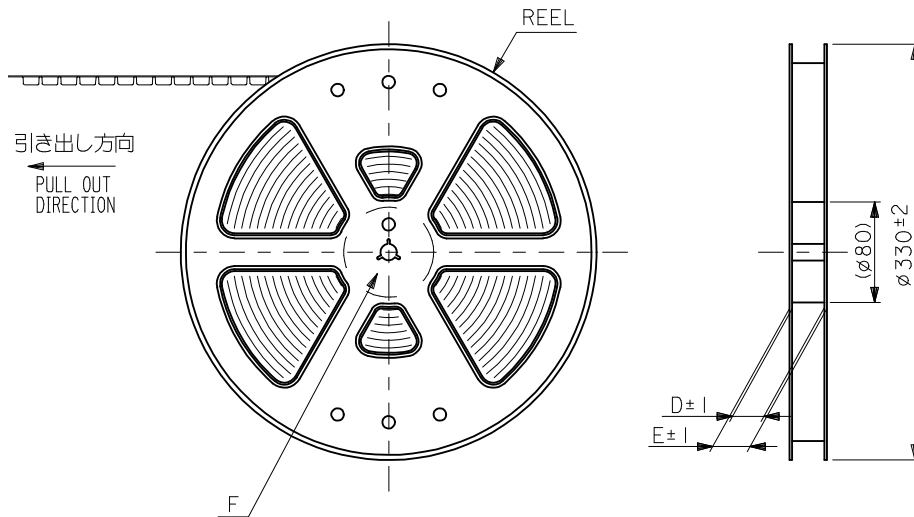
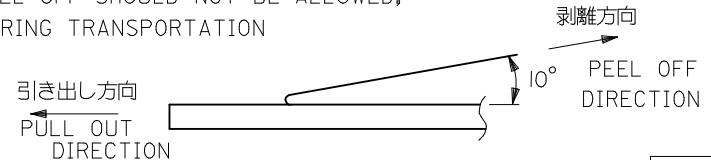


4. トップテープの剥離強度：(剥離方向は下図参照)

0. 1N~1.3N{ 10gf~130gf } 尚、本規格値は、出荷時に適用。  
 (但し、輸送時に剥離が発生しない事。)

PEELING OFF FORCE OF TOP TAPE

0. 1N ~ 1.3N{ 10gf ~ 130gf } (PEELING DIRECTION AS SHOWN IN FOLLOWING FIG.)  
 THIS REQUIREMENT SHOULD BE APPLIED AT SHIPMENT  
 PEEL OFF SHOULD NOT BE ALLOWED,  
 DURING TRANSPORTATION



DETAIL F

5. 材料 キャリアテープ：ポリプロピレン (PP)  
 トップテープ：PET, PE, PEF  
 リール：ポリスチレン (PS) <リサイクル材を含む>

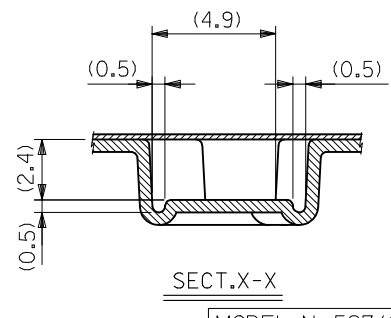
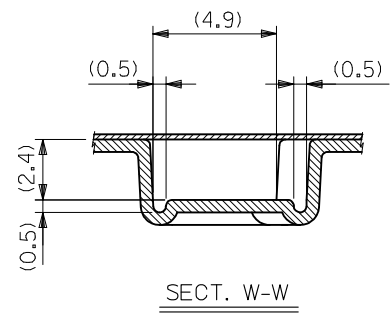
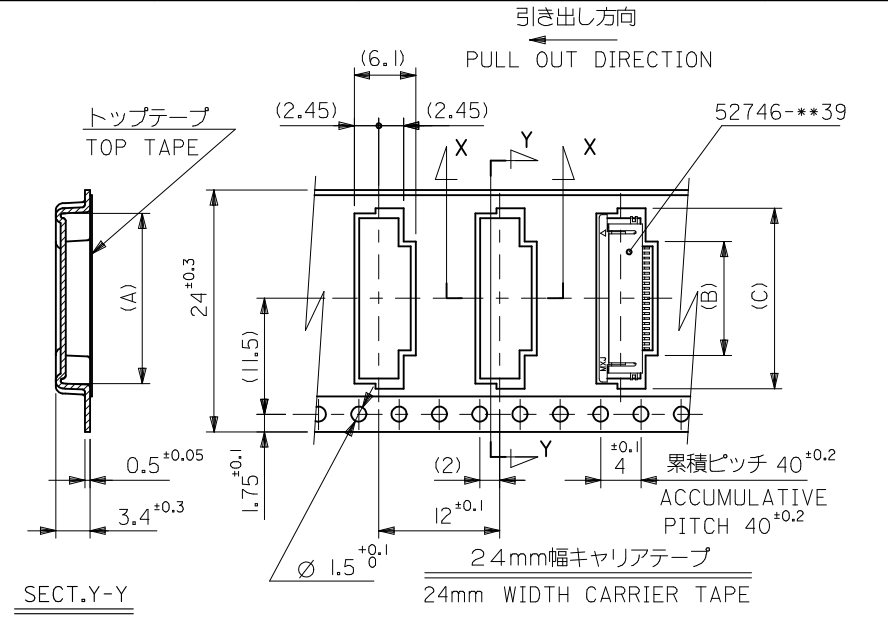
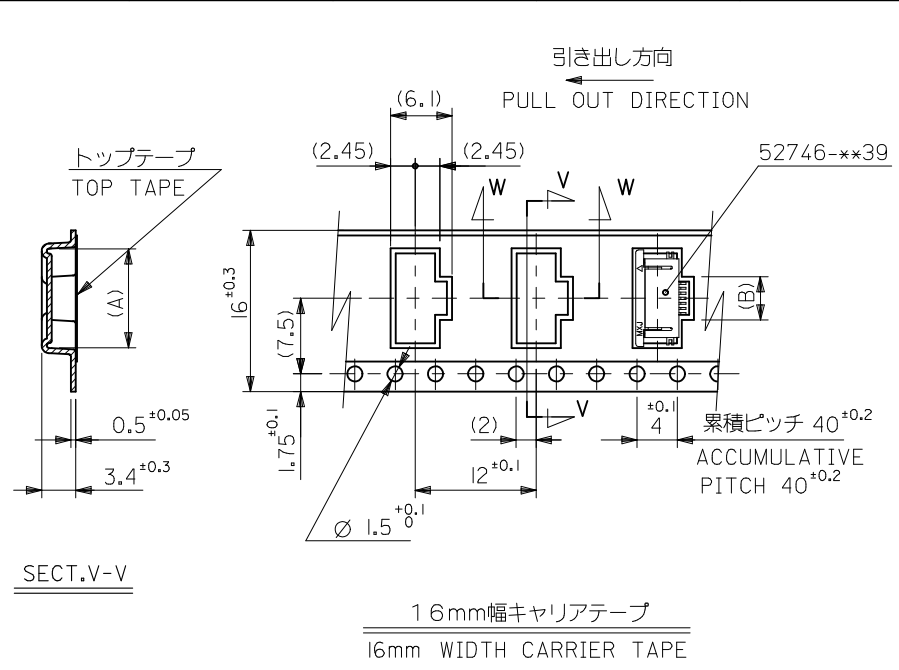
MATERIAL CARRIER TAPE:POLYPROPYLENE  
 TOP TAPE:PET,PE,PEF  
 REEL:POLYSTYRENE(PS)  
 <RECYCLE MATERIAL CONTAINED>

6. 本製品は 52746-\*\*\*81 の鉛フリー品です  
 THIS PRODUCT IS LEAD FREE OF 52746-\*\*\*81

7. 本製品は乾燥剤入り、ハイバリア梱包仕様である。  
 THIS PRODUCT IS HIGH BARRIER PACKAGE WITH DESICCANT.

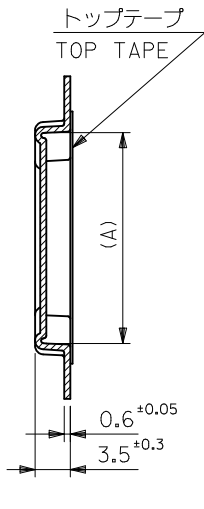
MODEL No.52746-\*\*\*71

|   |  |       |                               |   |  |                        |                        |
|---|--|-------|-------------------------------|---|--|------------------------|------------------------|
| REVISED<br>EC NO: J2015-0443<br>DRWN:AYOSHI I01 2014/09/30<br>CHKD:YKOBAYASHI 022014/09/30<br>APPR:YNOGAWA 2014/10/14 | GENERAL TOLERANCES (UNLESS SPECIFIED)                |       | DIMENSION STYLE<br>MM ONLY    |   | SCALE<br>---   | DESIGN UNITS<br>METRIC | THIRD ANGLE PROJECTION |
|   | 10 UNDER   | ±0.2  | DRAWN BY<br>HSHIMABUKURO      | DATE<br>'04/01/30   | TITLE<br>0.5 FPC CONN ZIF SMT RA<br>B/CONT EMBSTP PKG<br>-LEAD FREE- |                        |                        |
|   | 10 OVER 30 UNDER                                     | ±0.25 | CHECKED BY<br>KTOJO           | DATE<br>'04/01/30   | molex<br>SD-52746-024  |                        |                        |
|   | 30 OVER  | ±0.3  | APPROVED BY<br>MSASAO         | DATE<br>'04/01/30   |  |                        |                        |
| ANGULAR ±3 °  | DRAFT WHERE APPLICABLE MUST REMAIN WITHIN DIMENSIONS |       | MATERIAL NO.<br>SEE SHEET 2,3 | THIS DRAWING CONTAINS INFORMATION THAT IS PROPRIETARY TO MOLEX INCORPORATED AND SHOULD NOT BE USED WITHOUT WRITTEN PERMISSION |  |                        |                        |

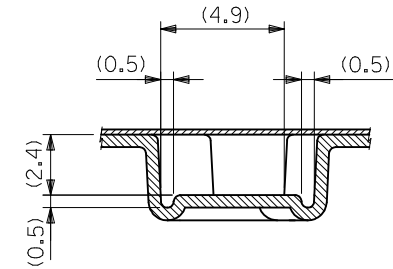
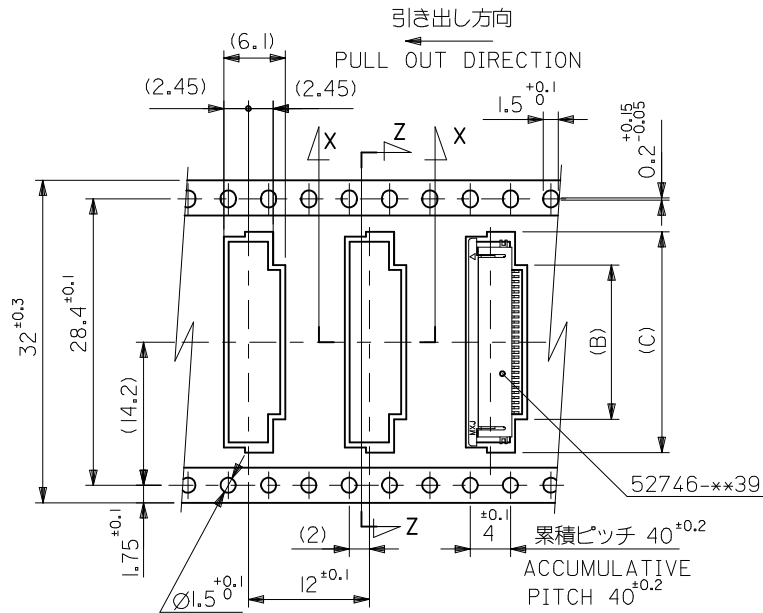


|                                |      |      |            |      |      |              |                |
|--------------------------------|------|------|------------|------|------|--------------|----------------|
| 24                             | 29.4 | 25.4 | 17.4       | 10.8 | 16.4 | 52746-2071   | 20             |
|                                |      |      | 16.9       | 10.3 | 15.9 | 52746-1971   | 19             |
|                                |      |      | 16.4       | 9.8  | 15.4 | 52746-1871   | 18             |
|                                |      |      | 15.9       | 9.3  | 14.9 | 52746-1771   | 17             |
|                                |      |      | 15.4       | 8.8  | 14.4 | 52746-1671   | 16             |
|                                |      |      | 14.9       | 8.3  | 13.9 | 52746-1571   | 15             |
|                                |      |      | 14.4       | 7.8  | 13.4 | 52746-1471   | 14             |
|                                |      |      | 13.9       | 7.3  | 12.9 | 52746-1371   | 13             |
|                                |      |      | 13.4       | 6.8  | 12.4 | 52746-1271   | 12             |
|                                |      |      | 12.9       | 6.3  | 11.9 | 52746-1171   | 11             |
|                                |      |      | 12.4       | 5.8  | 11.4 | 52746-1071   | 10             |
|                                |      |      | 11.9       | 5.3  | 10.9 | 52746-0971   | 9              |
|                                |      |      | 11.4       | 4.8  | 10.4 | 52746-0871   | 8              |
|                                |      |      | 10.9       | 4.3  | 9.9  | 52746-0771   | 7              |
|                                |      |      | 10.4       | 3.8  | 9.4  | 52746-0671   | 6              |
| 9.4                            | 2.8  | 8.4  | 52746-0471 | 4    |      |              |                |
| 16                             | 21.4 | 17.4 |            |      |      |              |                |
| キャリアテープ幅<br>CARRIER TAPE WIDTH | E    | D    | (C)        | (B)  | (A)  | MATERIAL NO. | 極数<br>CIRCUITS |

|   |                  |                                       |   |                            |                   |  |                        |                              |                     |  |
|---|------------------|---------------------------------------|---|----------------------------|-------------------|--|------------------------|------------------------------|---------------------|--|
| REVISED<br>EC NO: J2015-0443<br>DRWN:AYOSHI I 01 2014/09/30<br>CHKD:YKOBAYASHI 02 2014/09/30<br>APPR:YNOGAWA 2014/10/14 | DESCRIPTION<br>J | GENERAL TOLERANCES (UNLESS SPECIFIED) |   | DIMENSION STYLE<br>MM ONLY |                   | SCALE<br>---   | DESIGN UNITS<br>METRIC | THIRD ANGLE PROJECTION       |                     |  |
|   |                  | 10 UNDER                              | ±0.2  | DRAWN BY<br>HSHIMABUKURO   | DATE<br>'04/01/30 | TITLE<br>0.5 FPC CONN ZIF SMT RA<br>B/CONT EMBSTP PKG<br>-LEAD FREE- |                        |                              |                     |  |
|   |                  | 10 OVER 30 UNDER                      | ±0.25   | CHECKED BY<br>KTOJO        | DATE<br>'04/01/30 |  |                        |                              |                     |  |
|   |                  | 30 OVER                               | ±0.3  | APPROVED BY<br>MSASAO      | DATE<br>'04/01/30 |  |                        |                              |                     |  |
|   |                  | ANGULAR                               | ±3 °  | MATERIAL NO.               |                   | SEE TABLE  |                        | DOCUMENT NO.<br>SD-52746-024 | SHEET NO.<br>2 OF 3 |  |
| DRAFT WHERE APPLICABLE MUST REMAIN WITHIN DIMENSIONS  |                  | SIZE<br>A3                            | THIS DRAWING CONTAINS INFORMATION THAT IS PROPRIETARY TO MOLEX INCORPORATED AND SHOULD NOT BE USED WITHOUT WRITTEN PERMISSION |                            |                   |  |                        |                              |                     |  |



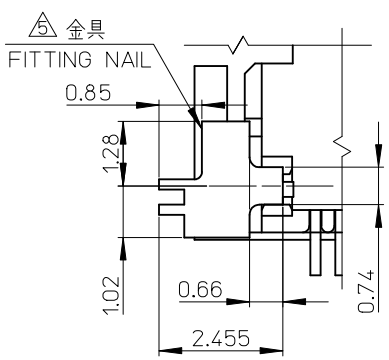
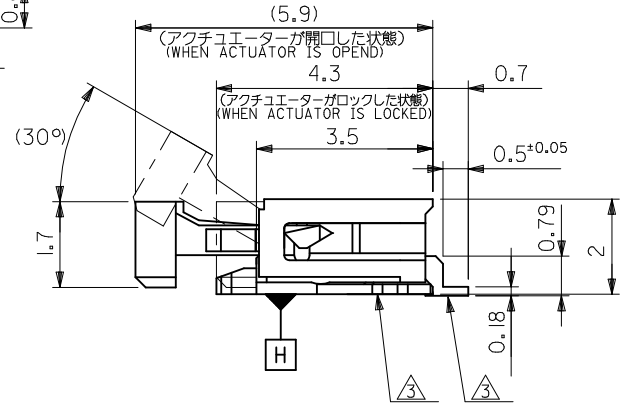
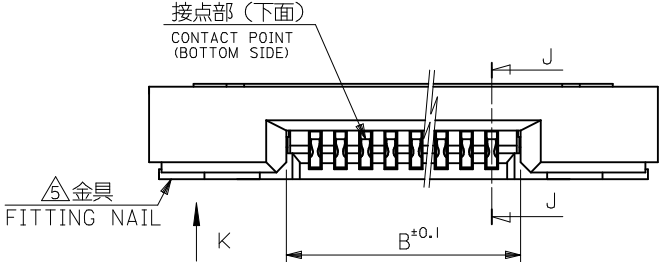
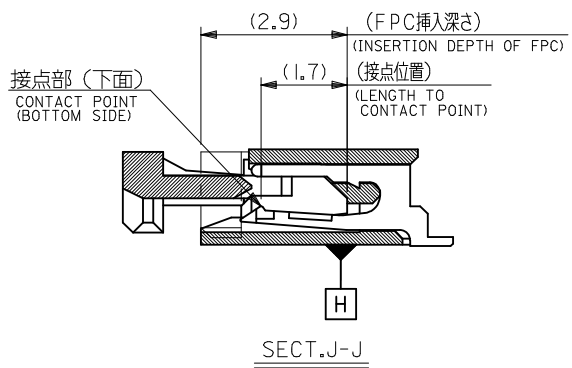
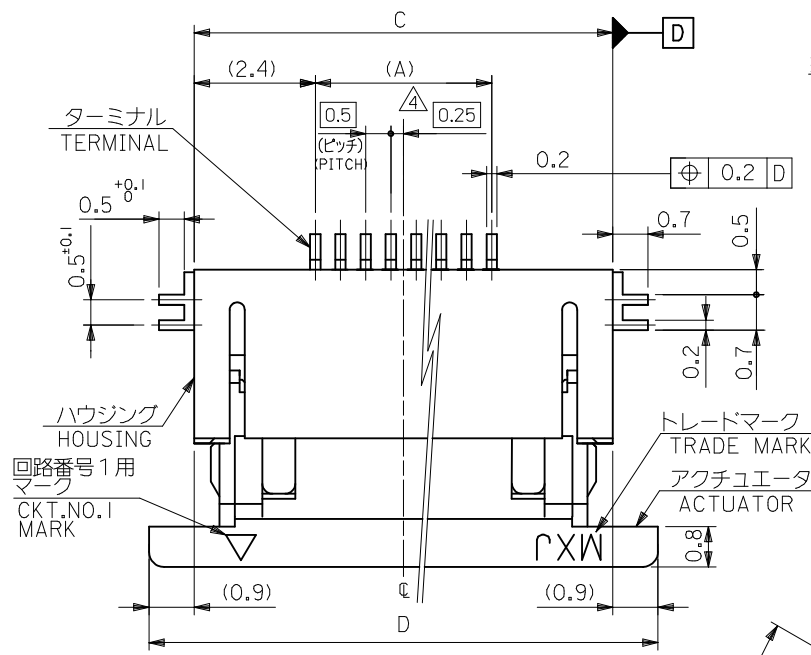
SECT.Z-Z



SECT.X-X

32mm幅キャリアテープ  
32mm WIDTH CARRIER TAPE

|   |  |                        |                            |                           |                        |  |                     |
|---|--|------------------------|----------------------------|---------------------------|------------------------|--|---------------------|
| REVISED<br>EC NO: J2015-0443<br>DRWN:AYOSHI 2014/09/30<br>CHKD:YKOBAYASHI 2014/09/30<br>APPR:YNOGAWA 2014/10/14 | GENERAL TOLERANCES<br>(UNLESS SPECIFIED)   |                        | DIMENSION STYLE<br>MM ONLY | SCALE<br>---              | DESIGN UNITS<br>METRIC | THIRD ANGLE<br>PROJECTION  |                     |
|   | 10 UNDER ±0.2  | 10 OVER 30 UNDER ±0.25 | 30 OVER ±0.3               | DRAWN BY<br>HSHIMABUKURO  | DATE<br>'04/01/30      | TITLE<br>0.5 FPC CONN ZIF SMT RA<br>B/CONT EMBSTP PKG<br>-LEAD FREE- |                     |
|   | ANGULAR ±3 °   |                        |                            | CHECKED BY<br>KTOJO       | DATE<br>'04/01/30      | APPROVED BY<br>MSASAO  |                     |
|   | DRAFT WHERE APPLICABLE<br>MUST REMAIN<br>WITHIN DIMENSIONS   |                        |                            | MATERIAL NO.<br>SEE TABLE | DATE<br>'04/01/30      | DOCUMENT NO.<br>SD-52746-024   | SHEET NO.<br>3 OF 3 |
| J   | THIS DRAWING CONTAINS INFORMATION THAT IS PROPRIETARY TO MOLEX<br>INCORPORATED AND SHOULD NOT BE USED WITHOUT WRITTEN PERMISSION |                        | SIZE<br>A3                 | molex                     |                        |  |                     |

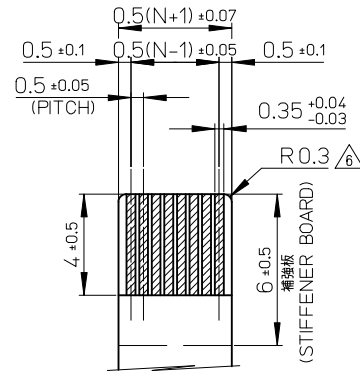


|      |      |       |     |                                      |            |
|------|------|-------|-----|--------------------------------------|------------|
| 16.1 | 14.3 | 10.65 | 9.5 | 52746-2071                           | 20         |
| 15.6 | 13.8 | 10.15 | 9   | 52746-1971                           | 19         |
| 15.1 | 13.3 | 9.65  | 8.5 | 52746-1871                           | 18         |
| 14.6 | 12.8 | 9.15  | 8   | 52746-1771                           | 17         |
| 14.1 | 12.3 | 8.65  | 7.5 | 52746-1671                           | 16         |
| 13.6 | 11.8 | 8.15  | 7   | 52746-1571                           | 15         |
| 13.1 | 11.3 | 7.65  | 6.5 | 52746-1471                           | 14         |
| 12.6 | 10.8 | 7.15  | 6   | 52746-1371                           | 13         |
| 12.1 | 10.3 | 6.65  | 5.5 | 52746-1271                           | 12         |
| 11.6 | 9.8  | 6.15  | 5   | 52746-1171                           | 11         |
| 11.1 | 9.3  | 5.65  | 4.5 | 52746-1071                           | 10         |
| 10.6 | 8.8  | 5.15  | 4   | 52746-0971                           | 9          |
| 10.1 | 8.3  | 4.65  | 3.5 | 52746-0871                           | 8          |
| 9.6  | 7.8  | 4.15  | 3   | 52746-0771                           | 7          |
| 9.1  | 7.3  | 3.65  | 2.5 | 52746-0671                           | 6          |
| 8.1  | 6.3  | 2.65  | 1.5 | 52746-0471                           | 4          |
| D    | C    | B     | (A) | EMBOSSED PACKAGE<br>ORDER No. オーダー番号 | 極数<br>CKT. |

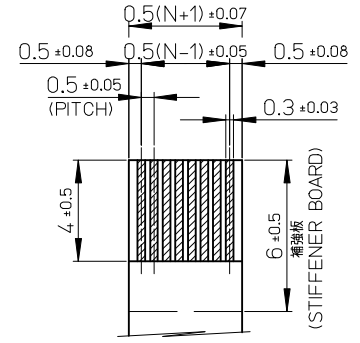
CONNECTOR SERIES NO. : 52746-\*\*39

|  |  |  |                            |           |   |              |                        |              |                           |           |
|--|--|--|----------------------------|-----------|---|--------------|------------------------|--------------|---------------------------|-----------|
| REVISED<br>EC NO: J2015-0443<br>DRWN: AYOSHI I 2014/09/30<br>CHKD: YKOBAYASHI 2014/09/30<br>APPR: YNOGAWA 2014/10/14 | GENERAL TOLERANCES<br>(UNLESS SPECIFIED) |  | DIMENSION STYLE<br>MM ONLY |           | SCALE<br>10:1   |              | DESIGN UNITS<br>METRIC |              | THIRD ANGLE<br>PROJECTION |           |
|  | 10 UNDER                                 | ±0.2   | DRAWN BY                   | DATE      | TITLE   |              |                        |              |                           |           |
|  | 10 OVER 30 UNDER                         | ±0.25  | HSHIMABUKURO               | '04/01/30 | 0.5 FPC CONN. ZIF FOR<br>SMT R/A (BOTTOM CONTACT)<br>GOLD PLATING<br><b>molex</b> |              |                        |              |                           |           |
|  | 30 OVER                                  | ±0.3   | KTOJO                      | '04/01/30 |   |              |                        |              |                           |           |
| ANGULAR ±3 °   |  | APPROVED BY  |                            | DATE      |   | MATERIAL NO. |                        | DOCUMENT NO. |                           | SHEET NO. |
| DRAFT WHERE APPLICABLE<br>MUST REMAIN<br>WITHIN DIMENSIONS   |  | MSASAO   |                            | '04/01/30 |   | SEE TABLE    |                        | SD-52746-025 |                           | 1 OF 2    |
| SIZE<br>A3   |  | THIS DRAWING CONTAINS INFORMATION THAT IS PROPRIETARY TO MOLEX<br>INCORPORATED AND SHOULD NOT BE USED WITHOUT WRITTEN PERMISSION |                            |           |   |              |                        |              |                           |           |

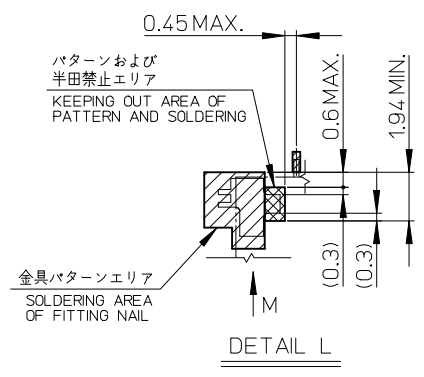




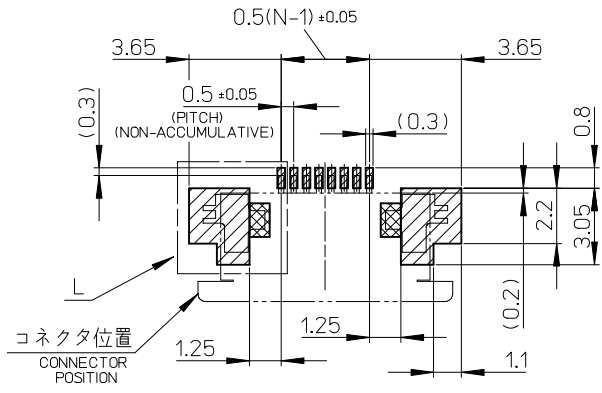
適合金めっきFPC推奨寸法  
 APPLICABLE FPC OF GOLD  
 PLATING RECOMMENDED DIMENSION  
 仕上がり厚さ: 0.3±0.03  
 THICKNESS: 0.3+0.03/-0.03



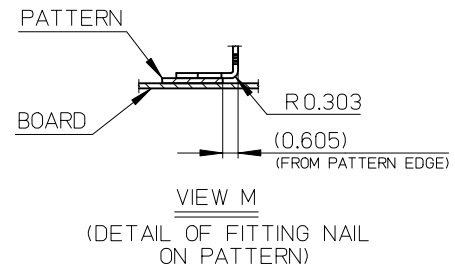
適合金めっきFFC推奨寸法  
 APPLICABLE FFC OF GOLD  
 PLATING RECOMMENDED DIMENSION  
 仕上がり厚さ: 0.3±0.03  
 THICKNESS: 0.3+0.03/-0.03



DETAIL L



参考基板レイアウト  
 (マウント面)  
 RECOMMENDED P.C.BOARD  
 PATTERN DIMENSION(REF.)  
 (MOUNTING SIDE)



注記NOTES

- 1.使用材料  
 MATERIAL  
 ハウジング: 46ナイロン、ガラス充填、UL94V-0、白  
 HOUSING: PA46, GLASS FILLED, UL94V-0, WHITE  
 アクチュエータ: ポリフェニレンサルファイド (PPS)、ガラス充填、UL94V-0、茶色  
 ACTUATOR: POLYPHENYLENE SULFIDE, GLASS FILLED, UL94V-0, BROWN  
 ターミナル: リン青銅、ニッケル下地金めっき (t=0.2)  
 TERMINAL: PHOSPHOR BRONZE, GOLD OVER NICKEL PLATING  
 金具: リン青銅、ニッケル下地金めっき (t=0.2)  
 FITTING NAIL: PHOSPHOR BRONZE, TIN OVER NICKEL PLATING
2. エンボステープ梱包時は、アクチュエータがロックした状態になります。  
 IN THE PACKAGE, ACTUATOR OF PART NO.52746-xx39 SHOULD BE LOCKED.
3. ソルダータール半田付け面のズレ量、及び金具半田付け面のズレ量は、基準面Hに対して上方向に0.1MAXIMUM、下方向0.15MAXIMUMとする。  
 MISALIGNMENT OF SOLDER TAILS AND FITTING NAILS FROM DATUM-H.  
 UPPER DIRECTION: 0.1MAXIMUM  
 LOWER DIRECTION: 0.15 MAXIMUM
4. 偶数極に適用  
 APPLY FOR EVEN CIRCUIT.
5. ハ' ターン剥離止め金具  
 FITTING NAIL FOR PREVENTION OF PEELING OF P.W.B. PATTERN.
6. R0.3は、FPCの導体部にかからないこと  
 R0.3 MUST NOT BE OVERLAPED TO PATTERN OF FPC.
7. ELV 及び RoHS 適合品  
 ELV AND RoHS COMPLIANT

FPCについて:  
 打ち抜き方向は導体側から補強板を推奨いたします。  
 補強フィルム材質はポリイミドを推奨いたします。  
 ABOUT FPC:  
 RECOMMENDED PUNCHER DIRECTION: FROM CONDUCTOR SIDE TO STIFFNER BOARD SIDE.  
 RECOMMENDED MATERIAL:  
 STIFFNER FILM: POLYIMIDE  
 BONDING AGENT: THERMOSETTING BONDING AGENT

|  |  |                           |   |                     |  |                        |                        |
|--|--|---------------------------|---|---------------------|--|------------------------|------------------------|
| REVISED<br>EC NO: J2015-0443<br>DRWN: YOSHI 2014/09/30<br>CHKD: YKOBAYASHI 02/2014/09/30<br>APPR: YNOGAWA 2014/10/14 | GENERAL TOLERANCES (UNLESS SPECIFIED)                |                           | DIMENSION STYLE<br>MM ONLY  |                     | SCALE<br>5:1   | DESIGN UNITS<br>METRIC | THIRD ANGLE PROJECTION |
|  | 10 UNDER   | ±0.2                      | DRAWN BY<br>HSHIMABUKURO  | DATE<br>'04/01/30   | TITLE<br>0.5 FPC CONN. ZIF FOR SMT R/A (BOTTOM CONTACT) GOLD PLATING |                        |                        |
|  | 10 OVER 30 UNDER                                     | ±0.25                     | CHECKED BY<br>KTOJO   | DATE<br>'04/01/30   |  |                        |                        |
|  | 30 OVER  | ±0.3                      | APPROVED BY<br>MSASAO   | DATE<br>'04/01/30   |  |                        |                        |
| ANGULAR ±3 °   | DRAFT WHERE APPLICABLE MUST REMAIN WITHIN DIMENSIONS | MATERIAL NO.<br>SEE TABLE | DOCUMENT NO.<br>SD-52746-025  | SHEET NO.<br>2 OF 2 |  |                        |                        |
| J  | REV  | SIZE<br>A3                | THIS DRAWING CONTAINS INFORMATION THAT IS PROPRIETARY TO MOLEX INCORPORATED AND SHOULD NOT BE USED WITHOUT WRITTEN PERMISSION |                     |  |                        |                        |