



Chipsmall Limited consists of a professional team with an average of over 10 year of expertise in the distribution of electronic components. Based in Hongkong, we have already established firm and mutual-benefit business relationships with customers from,Europe,America and south Asia,supplying obsolete and hard-to-find components to meet their specific needs.

With the principle of “Quality Parts,Customers Priority,Honest Operation,and Considerate Service”,our business mainly focus on the distribution of electronic components. Line cards we deal with include Microchip,ALPS,ROHM,Xilinx,Pulse,ON,Everlight and Freescale. Main products comprise IC,Modules,Potentiometer,IC Socket,Relay,Connector.Our parts cover such applications as commercial,industrial, and automotives areas.

We are looking forward to setting up business relationship with you and hope to provide you with the best service and solution. Let us make a better world for our industry!



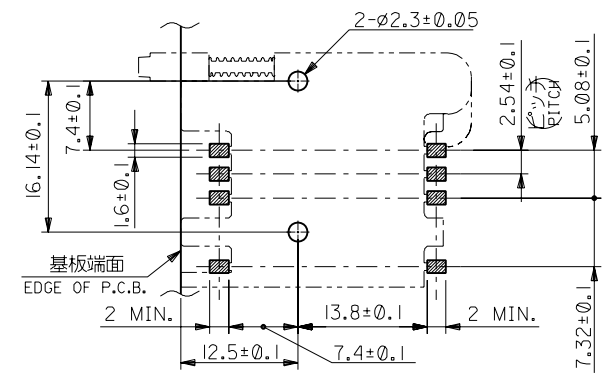
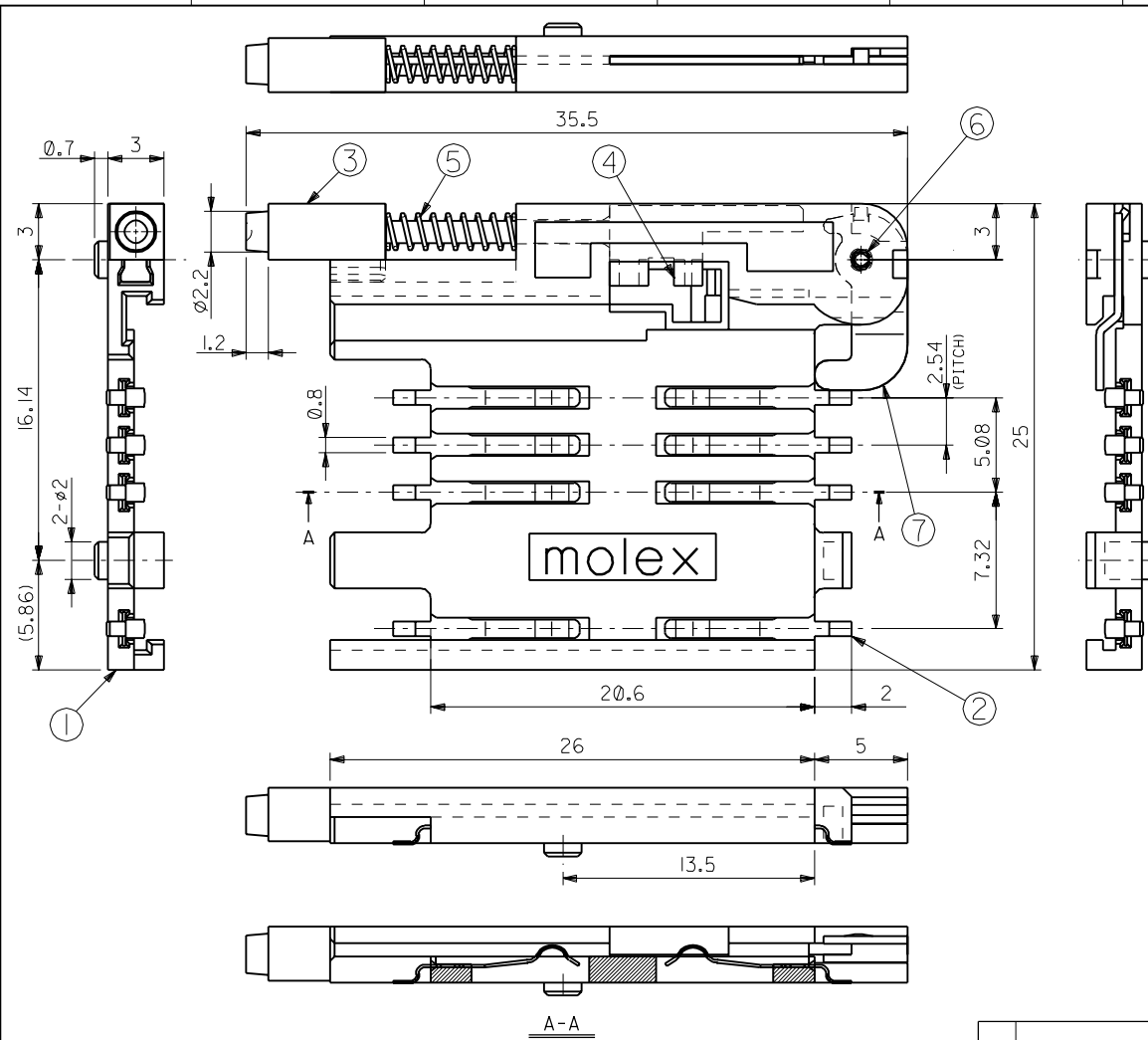
## Contact us

Tel: +86-755-8981 8866 Fax: +86-755-8427 6832

Email & Skype: info@chipsmall.com Web: www.chipsmall.com

Address: A1208, Overseas Decoration Building, #122 Zhenhua RD., Futian, Shenzhen, China





推奨基板寸法  
RECOMMENDED PCB PATTERN LAYOUT

注記: 1. 適合カードホルダー: 52828-0611  
APPLICABLE CARD HOLDER: 52828-0611  
2. メッキ  
PLATING  
接点部: 金メッキ  
CONTACT AREA: GOLD  
半田付け部: 半田メッキ  
SOLDER TAIL AREA: TIN-LEAD  
下地メッキ: ニッケルメッキ  
UNDER-PLATING: NICKEL

角度 ANGLE	±3°
30以上 OVER	+0.3
10以上 30未満 UNDER	+0.25
10未満 UNDER	+0.2

記号 LTR	変更内容 REVISION RECORD	DR. CHK.	日付 DATE	APP'D. BY (Signature)	尺度 SCALE
0	0	0	95/11/21	MOKANO	4-1

No.	品名 NAME	材料 MATERIAL	仕上げ FINISH
1	HOUSING	ガラス入り耐熱樹脂 UL94V-0 色: 黒色 LCP G.F. UL94V-0 COLOR: BLACK	—
2	TERMINAL	りん青銅 t0.15 PHOSPHOR BRONZE	NOTES 3 参照 SEE NOTES 3
3	PUSH-BUTTON	ガラス入り46ナイロン UL94V-0 色: 黄色 NYLON46 G.F. UL94V-0 COLOR: YELLOW	—
4	PUSH-ROD	ステンレス鋼 t0.4 STAINLESS STEEL t0.4	—
5	COIL-SPRING	ステンレス鋼 φ0.25 STAINLESS STEEL φ0.25	—
6	SPRING PIN	鋼 STEEL	—
7	LEVER	ステンレス鋼 t0.4 STAINLESS STEEL t0.4	—

材料 MATERIAL 表参照 SEE CHART  
仕上げ FINISH 注参照 SEE NOTES  
適用電線範囲 WIRE RANGE —  
被覆外径 INS. RANGE —  
DRAWN BY MOKANO  
CHK'D BY A. Kamalige

molex MOLEX-JAPAN CO.,LTD.  
日本モレックス株式会社  
REVISE ONLY ON CAD SYSTEM  
TITLE 名称  
CHIP-SIM HOUSING ASS'Y  
DWG. NO. SD-52827-0611  
REV 0