



Chipsmall Limited consists of a professional team with an average of over 10 year of expertise in the distribution of electronic components. Based in Hongkong, we have already established firm and mutual-benefit business relationships with customers from,Europe,America and south Asia,supplying obsolete and hard-to-find components to meet their specific needs.

With the principle of “Quality Parts,Customers Priority,Honest Operation,and Considerate Service”,our business mainly focus on the distribution of electronic components. Line cards we deal with include Microchip,ALPS,ROHM,Xilinx,Pulse,ON,Everlight and Freescale. Main products comprise IC,Modules,Potentiometer,IC Socket,Relay,Connector.Our parts cover such applications as commercial,industrial, and automotives areas.

We are looking forward to setting up business relationship with you and hope to provide you with the best service and solution. Let us make a better world for our industry!



Contact us

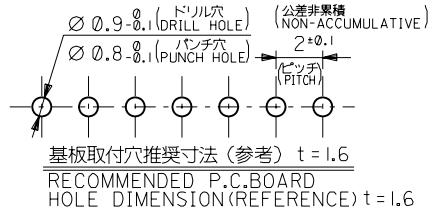
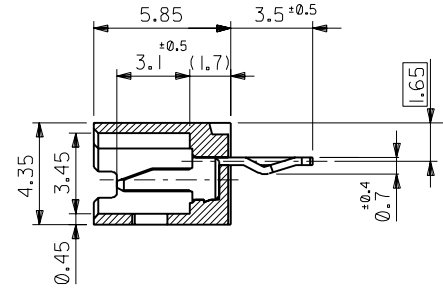
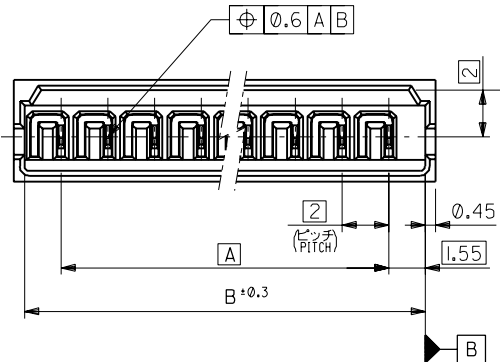
Tel: +86-755-8981 8866 Fax: +86-755-8427 6832

Email & Skype: info@chipsmall.com Web: www.chipsmall.com

Address: A1208, Overseas Decoration Building, #122 Zhenhua RD., Futian, Shenzhen, China



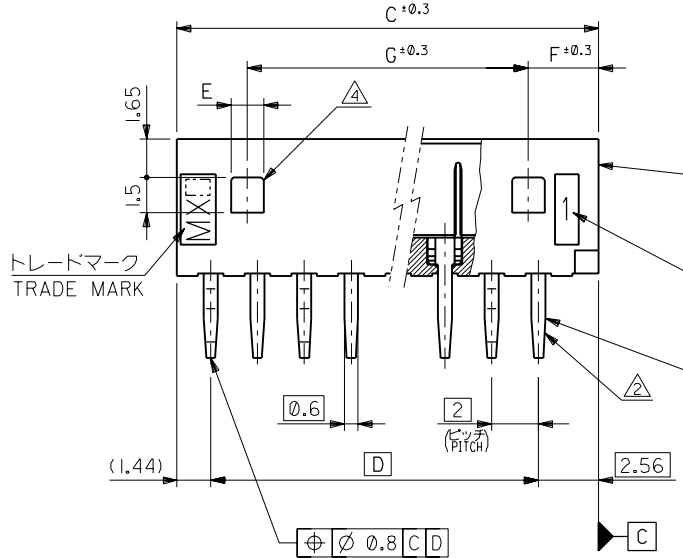
ENG. NO. SD-53014-***1*
 EDP NO.
 DIMENSIONS IN METRIC DO NOT SCALE DRAWING



注記 NOTES

1. 嵌合相手 : 51004-***00
MATES WITH : 51004-***00
- △ 3極品以上のキング加工については、1極おきに2箇所以上を施すこと。
KINK TO BE ADDED ON THE ODD NUMBER SOLDER TAILS. (FROM THE TRADE MARK SIDE.)
- △ *マークは、色を表わします。
* MARK INDICATES DYED COLOR :
"1"黒 BLACK, "2"赤 RED, "3"黄 YELLOW, "4"青 BLUE
- △ ロック用の穴は、2極品及び3極品に1ヶ、4極品以上は2ヶとする。
LOCKING HOLE : 1 PLACE FOR 2, 3 CKTS. AND MORE THAN 4 CKTS.

2極品のキング形態図
KINK FORM FOR 2 CKTS.
両方のテールにキングを施す。
SOLDER TAIL KINK SHOULD BE ADDED ON BOTH TAILS.



| | | | | | | | | |
|----|---|-----|----|----|------|----|------------|-----------------|
| 26 | 3 | 1.4 | 28 | 32 | 31.1 | 28 | 53014-151* | 15 |
| 24 | 3 | 1.4 | 26 | 30 | 29.1 | 26 | -141* | 14 |
| 22 | 3 | 1.4 | 24 | 28 | 27.1 | 24 | -131* | 13 |
| 20 | 3 | 1.4 | 22 | 26 | 25.1 | 22 | -121* | 12 |
| 18 | 3 | 1.4 | 20 | 24 | 23.1 | 20 | -111* | 11 |
| 16 | 3 | 1.4 | 18 | 22 | 21.1 | 18 | -101* | 10 |
| 14 | 3 | 1.4 | 16 | 20 | 19.1 | 16 | -091* | 9 |
| 12 | 3 | 1.4 | 14 | 18 | 17.1 | 14 | -081* | 8 |
| 10 | 3 | 1.4 | 12 | 16 | 15.1 | 12 | -071* | 7 |
| 8 | 3 | 1.4 | 10 | 14 | 13.1 | 10 | -061* | 6 |
| 6 | 3 | 1.4 | 8 | 12 | 11.1 | 8 | -051* | 5 |
| 4 | 3 | 1.4 | 6 | 10 | 9.1 | 6 | -041* | 4 |
| -- | 4 | 3.4 | 4 | 8 | 7.1 | 4 | -031* | 3 |
| -- | 3 | 1.4 | 2 | 6 | 5.1 | 2 | 53014-021* | 2 |
| G | F | E | D | C | B | A | ENG. NO. △ | 極数 NO. OF CKTS. |

| | | | | | |
|-------------------------------|-------|------------------------------|-----------------------------------|---|----------|
| 材料 MATERIAL | | 図中参照 SEE DWG. | | molex MOLEX-JAPAN CO.,LTD. 日本モレックス株式会社 | |
| 仕上げ FINISH | | --- | | EDP. NO. | |
| 適用電線範囲 WIRE RANGE | | --- | | ENG. NO. | |
| 被覆外径 INS. RANGE | | --- | | SD-53014-***1* | |
| DRAWN BY M.HENMI '92/5/27 | | CHK'D BY '95/6/12 H.HIRAMOTO | | TITLE 名称 2.0 LOW PROFILE WAFER ASS'Y (DYED COLOR) | |
| APP'D BY '95/6/12 M.FUKUSHIMA | | 尺度 SCALE 5-1 | | REV B | |
| 角度 ANGLE | ±3° | REVISION RECORD | | REVISION RECORD | |
| 30以上 OVER | ±0.3 | B | 変更 REVISD (U50425) | Y.M | '95/6/12 |
| 10以上 30未滿 UNDER | ±0.25 | A | 変更及び再作成 REVISD & REDRAWN (J20435) | M.H | '92/5/27 |
| 10未滿 UNDER | ±0.2 | 記号 LTR | 変更内容 REVISION RECORD | DR. CHK. | 日付 DATE |
| 一般公差 GENERAL TOLERANCES | | REVISE ONLY ON CAD SYSTEM | | | |