



Chipsmall Limited consists of a professional team with an average of over 10 year of expertise in the distribution of electronic components. Based in Hongkong, we have already established firm and mutual-benefit business relationships with customers from,Europe,America and south Asia,supplying obsolete and hard-to-find components to meet their specific needs.

With the principle of “Quality Parts,Customers Priority,Honest Operation,and Considerate Service”,our business mainly focus on the distribution of electronic components. Line cards we deal with include Microchip,ALPS,ROHM,Xilinx,Pulse,ON,Everlight and Freescale. Main products comprise IC,Modules,Potentiometer,IC Socket,Relay,Connector.Our parts cover such applications as commercial,industrial, and automotives areas.

We are looking forward to setting up business relationship with you and hope to provide you with the best service and solution. Let us make a better world for our industry!



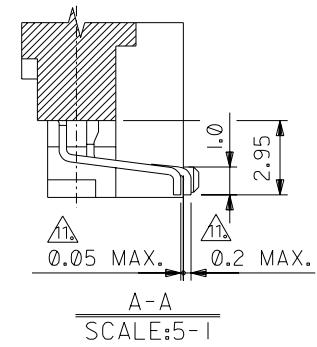
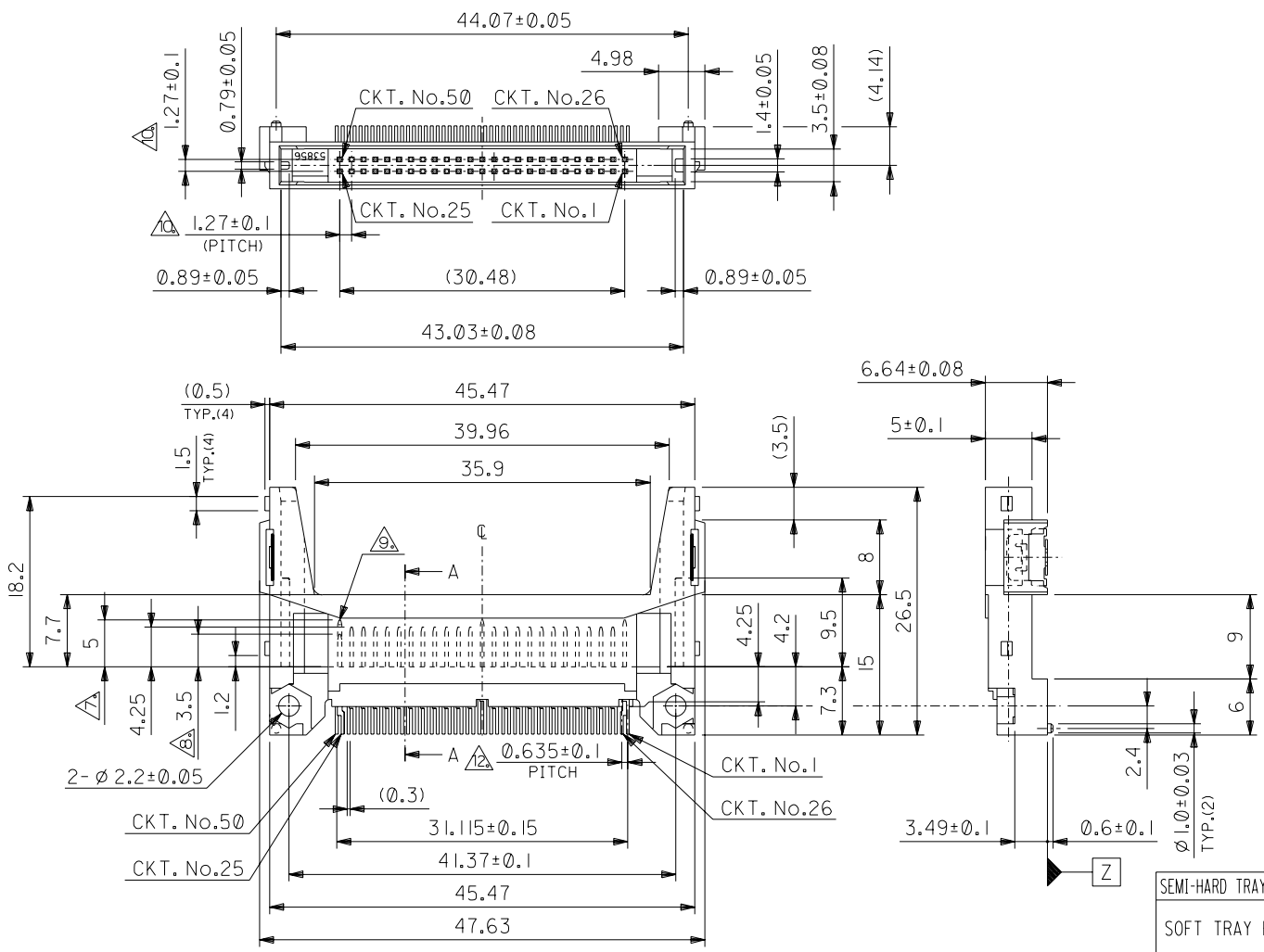
Contact us

Tel: +86-755-8981 8866 Fax: +86-755-8427 6832

Email & Skype: info@chipsmall.com Web: www.chipsmall.com

Address: A1208, Overseas Decoration Building, #122 Zhenhua RD., Futian, Shenzhen, China





SEMI-HARD TRAY PACKAGE	WHITE	53856-5076	50
SOFT TRAY PACKAGE	BLACK	53856-5071	50
	WHITE	53856-5070	50
PACKING TRAY FORM	HOUSING COLOR	MATERIAL NO.	No. Of CKT.

DO NOT SCALE DRAWING

EC NO. DRWN: CHK: APPR:	EC NO. DRWN: CHK: APPR:	EC NO. DRWN: CHK: APPR:	EC NO. DRWN: CHK: APPR:
RELEASED	EC NO. J2004-3129	DRWN: M.NABEI 04/03/16	CHK: K.TOJO 04/03/16
		APPR: M.SASAO 04/03/16	

MATERIAL 材料	SEE NOTES
FINISH 仕上り	SEE NOTES
WIRE RANGE 適用電線規格	#
INS. RANGE 被覆外径	#

GENERAL TOLERANCES: (UNLESS SPECIFIED) 一般公差	SCALE	DESIGN UNITS
10 UNDER 未満	#	<input checked="" type="checkbox"/> mm <input type="checkbox"/> INCH
10 OVER 30 UNDER 以上 未満	±0.2	<input type="checkbox"/> mm <input checked="" type="checkbox"/> INCH
30 OVER 以上	±0.25	<input type="checkbox"/> mm <input checked="" type="checkbox"/> INCH
ANGLE 角度	±3°	

53856-507*	MODEL No.	DIMENSIONS:		SHT	REV
		<input type="checkbox"/> mm <input type="checkbox"/> INCH	<input type="checkbox"/> mm <input checked="" type="checkbox"/> INCH		REVISE ON CAD ONLY
DRAWN BY & DATE M.NABEI '04/03/16		TITLE: CF CARD CONN. 50P HEADER ASS'Y -LEAD FREE-			
CHECKED BY & DATE K.TOJO '04/03/16		MOLEX MOLEX INCORPORATED			
APPROVED BY & DATE M. Sasao '04/03/16		MATERIAL NO.	DRAWING NO.	SHEET NO.	
CAD FILENAME SD-53856-007.S01		SEE CHART	SD-53856-007	1 OF 2	
THIS DRAWING CONTAINS INFORMATION THAT IS PROPRIETARY TO MOLEX INCORPORATED AND SHOULD NOT BE USED WITHOUT WRITTEN PERMISSION.					SIZE B

DWG. NO. SD-53856-007

DO NOT SCALE DRAWING

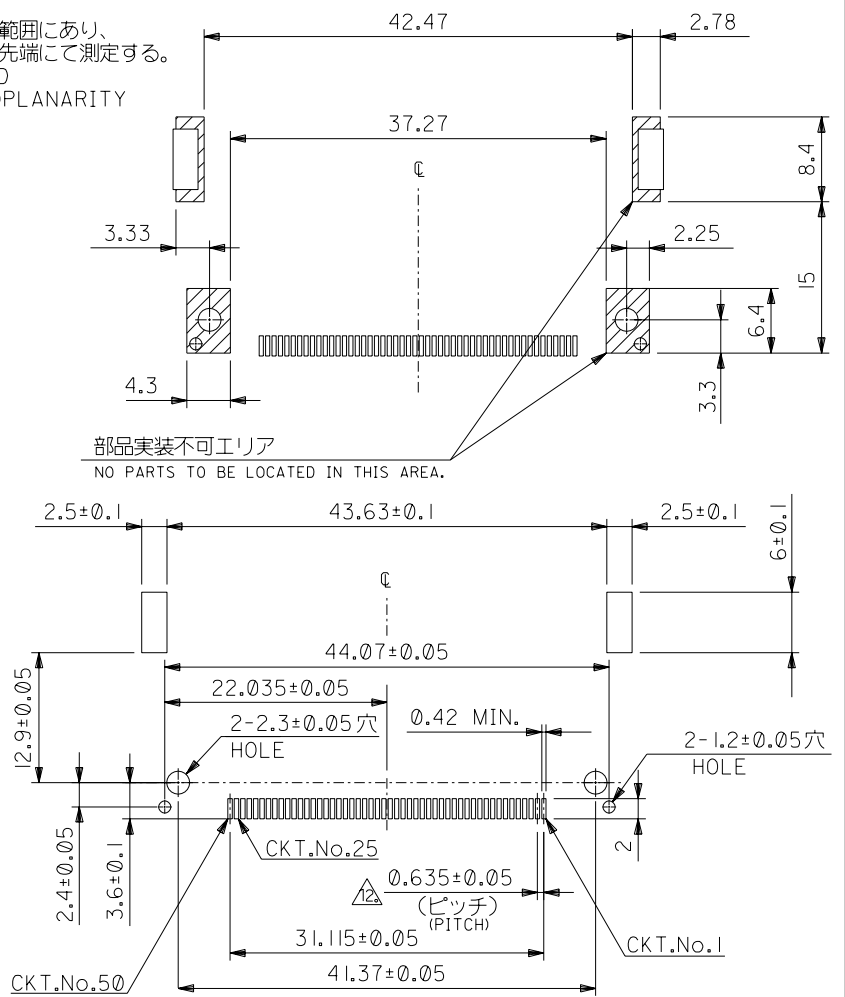
注) NOTES

- 材質 MATERIAL
ハウジング: ガラス入り LCP UL94V-0
HOUSING: LCP G.F. UL94V-0
ピン: リン青銅
PIN: PHOSPHOR BRONZE
メール: リン青銅
NAIL: PHOSPHOR BRONZE
- メッキ仕様 PLATING
PIN 接点部: ニッケル下地, パラジウムニッケル, 金メッキ
CONTACT AREA: PALLADIUM-NICKEL, GOLD OVER NICKEL
半田付け部: 錫メッキ
SOLDER TAIL AREA: TIN
下地メッキ: ニッケルメッキ
UNDERPLATING: NICKEL OVER ALL
NAIL 錫メッキ
TIN
下地メッキ: ニッケルメッキ
UNDERPLATING: NICKEL OVER ALL
- 推奨基板厚: $t \geq 0.8$ MIN.
RECOMMENDED P.C.B. THICKNESS: $t \geq 0.8$ MIN.
- 適合カード厚
RECOMMENDED CARD THICKNESS
接続部: 3.3 ± 0.1
CONNECTING AREA: 3.3 ± 0.1
- 適合カード幅: 42.8 ± 0.1
RECOMMENDED CARD WIDTH: 42.8 ± 0.1
- ハウジング色:
HOUSING COLOR:
53856-5010: 白 (WHITE)
53856-5010: 黒 (BLACK)

① ソルダータールは、Z面を基準とし上へ 0.05 下へ 0.2 の範囲にあり、且つソルダータールの平坦度は、 0.15 MAX. とし、テール先端にて測定する。
SOLDERTAILS TO BE WITHIN 0.05 UPWARD AND 0.2 DOWNWARD FROM Z-DATUM PLACE, AND COPLANARITY OF SOLDERTAILS TO BE WITHIN 0.15 . MEASUREMENT POINT IS SOLDERTAILS TIP.

② 公差非累積
NON-CUMULATIVE

③ 本製品は 53856-501* の鉛フリー品である。
THIS PRODUCT IS LEAD FREE OF 53856-501*.



EC NO. DRAWN: CHK: APPR:	EC NO. DRAWN: CHK: APPR:	EC NO. DRAWN: CHK: APPR:	EC NO. DRAWN: CHK: APPR:	EC NO. DRAWN: CHK: APPR:	EC NO. DRAWN: CHK: APPR:
0					

MATERIAL 材料	— # —
FINISH 仕上げ	— # —
WIRE RANGE 適用電線範囲	— # —
INS. RANGE 被覆外径	— # —

GENERAL TOLERANCES: (UNLESS SPECIFIED) 一般公差	
10 UNDER 未満	± 0.2
10 OVER 30 UNDER 以上 未満	± 0.25
30 OVER 以上	± 0.3
ANGLE 角度	$\pm 3^\circ$

53856-507*		MODEL NO.	DIMENSIONS:		SHT	REV
SCALE — # —	DESIGN UNITS <input checked="" type="checkbox"/> mm <input type="checkbox"/> INCH	<input checked="" type="checkbox"/> THIRD ANGLE <input type="checkbox"/> PROJECTION	<input type="checkbox"/> mm <input type="checkbox"/> INCH	<input type="checkbox"/> mm <input checked="" type="checkbox"/> ONLY		REVISE ON CAD ONLY
DRAWN BY & DATE M.NABEI '04/03/16		TITLE: CF CARD CONN. 50P HEADER ASS'Y -LEAD FREE-				
CHECKED BY & DATE K.TOJO '04/03/16		MOLEX MOLEX INCORPORATED				
APPROVED BY & DATE H. Sano '04/03/16						
CAD FILENAME SD-53856-007.S02	MATERIAL NO. — # —	DRAWING NO. SD-53856-007	SHEET NO. 2			
THIS DRAWING CONTAINS INFORMATION THAT IS PROPRIETARY TO MOLEX INCORPORATED AND SHOULD NOT BE USED WITHOUT WRITTEN PERMISSION.						SIZE B

SD-53856-007.S02