



Chipsmall Limited consists of a professional team with an average of over 10 year of expertise in the distribution of electronic components. Based in Hongkong, we have already established firm and mutual-benefit business relationships with customers from,Europe,America and south Asia,supplying obsolete and hard-to-find components to meet their specific needs.

With the principle of "Quality Parts,Customers Priority,Honest Operation,and Considerate Service",our business mainly focus on the distribution of electronic components. Line cards we deal with include Microchip,ALPS,ROHM,Xilinx,Pulse,ON,Everlight and Freescale. Main products comprise IC,Modules,Potentiometer,IC Socket,Relay,Connector.Our parts cover such applications as commercial,industrial, and automotives areas.

We are looking forward to setting up business relationship with you and hope to provide you with the best service and solution. Let us make a better world for our industry!



Contact us

Tel: +86-755-8981 8866 Fax: +86-755-8427 6832

Email & Skype: info@chipsmall.com Web: www.chipsmall.com

Address: A1208, Overseas Decoration Building, #122 Zhenhua RD., Futian, Shenzhen, China





Element / Universal

The special geometry of the enclosure half-shells offers easy mounting in the interior

- 12 or 3 sizes respectively
- With air vents and/or recessed membrane keypad area, depending on design
- S version with snap lock
- A version with aluminium front panel in lid
- Depending on the model, lid screwing systems from above and quick-release fasteners are available



Colour	Lid: light grey, similar to RAL 7035; base graphite grey, similar to RAL 7024; special colours on request
Protection class	Plain: IP 40/DIN EN 60529; with air vents: IP 30/DIN EN 60529
Enclosure material	PS; for details see Technical Information

F version: With recessed area of 1 mm in upper section for mounting of membrane keypads

VL version: With vertical, injection-moulded air vents

A version: With aluminium front panel in the cover area of the lid



Element



Enclosure, plain

Model	Order no.	A	B	C	c1
E 406	05406000	65	50	30	24
E 408	05408000	65	50	45	39
E 410	05410002	100	50	25	19
E 420	05420002	100	50	40	34
E 430	05430002	120	65	40	34
E 435	05435000	120	65	65	59
E 440	05440002	150	80	55	49
E 445	05445000	150	80	80	74
E 450	05450002	188	110	70	64
E 460	05460000	188	110	100	94
E 470	05470000*	188	110	120	114

Scope of delivery: Lid, base, 4 fixing screws

Note: * = Available on request.

Accessories: See following pages.



Enclosure, closed, with membrane keypad area

Model	Order no.	A	B	C	c1
E 406 F	05406700*	65	50	31	24
E 410 F	05410700*	100	50	26	19
E 420 F	05420700*	100	50	41	34
E 430 F	05430700*	120	65	41	34
E 440 F	05440700*	150	80	56	49
E 450 F	05450700*	188	110	71	64

Scope of delivery: Lid, base, 4 fixing screws

Note: * = Available on request.

Accessories: See following pages.



Enclosure with air vents

Model	Order no.	A	B	C	c1
E 406 VL	05406900	65	50	30	24
E 440 VL	05440200*	150	80	55	49
E 450 VL	05450200	188	110	70	64

Scope of delivery: Lid, base, 4 fixing screws

Note: * = Available on request.

Accessories: See following pages.



Enclosure with air vents and membrane keypad area

Model	Order no.	A	B	C	c1
E 410 F VL	05410800*	100	50	26	19
E 420 F VL	05420800*	100	50	41	34
E 430 F VL	05430800*	120	65	41	34
E 440 F VL	05440800*	150	80	56	49
E 450 F VL	05450800*	188	110	71	64

Scope of delivery: Lid, base, 4 fixing screws

Note: * = Available on request.

Accessories: See following pages.

Element

Enclosure with snap lock

Model	Order no.	A	B	C	c1
E 434 S	05434000	188	110	40	34

Scope of delivery: Lid, base, moulded-on snap lock

Note: See following pages for accessories.



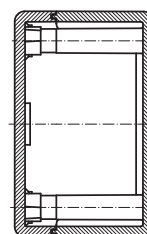
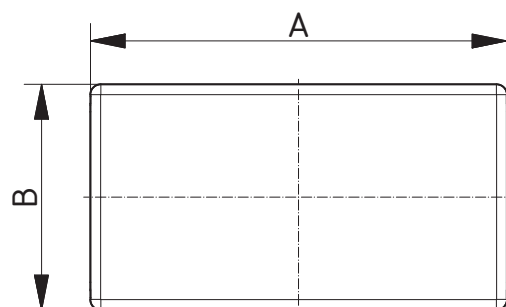
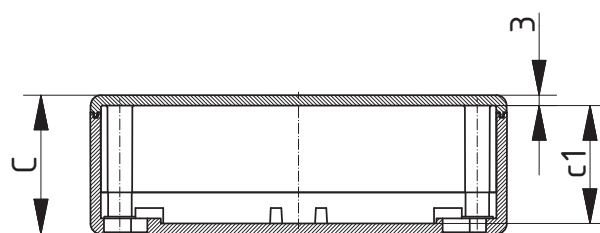
Enclosure with front panel

Model	Order no.	A	B	C	c1
E 430 A	05430500*	120	65	40	33

Scope of delivery: Lid with aluminium front panel, base, 4 fixing screws

Note: * = Available on request.

Accessories: See following pages.



Z-2803245

Element accessories



Wall brackets

Model	Order no.	Note
E-WL	25001500	For E 406-E 450
E-WL	25001600*	For E 460-E 470

Scope of delivery: 1 set = 4 pieces

Note: * = Available on request



Quick-release fastener

Model	Order no.	Note
E-SV	25001700	For E 435, E 440 VL, E 445, E 450 VL, E 460, E 470

Scope of delivery: 1 set = 4 pieces



Mounting panels

Model	Order no.	Note
E-M	25000100*	For E 410-E 420
E-M	25000200*	For E 430-E 435
E-M	25000400*	For E 440-E 445
E-M	25000300*	For E 450-E 470, for E 434 S

Scope of delivery: 1 mounting panel

Note: * = Available on request



Lid assembly kit from above

Model	Order no.	Note
E-D0	25000500*	For E 430
E-D0	25000600*	For E 435
E-D0	25000700*	For E 440
E-D0	25000800*	For E 445
E-D0	25000910*	For E 450
E-D0	25001000*	For E 460
E-D0	25001100*	For E 470

Scope of delivery: Lid assembly kit from above, 4 screws including inserts for the base



Rubber feet

Model	Order no.	Colour	Note
EG-GF	25002100	Grey	Foam, for E 406-E 435; for EG...
E-F	25002200	White	Rubber, 67 Shore, for E 440-E 470, for E 434 S

Scope of delivery: 1 set = 4 pieces

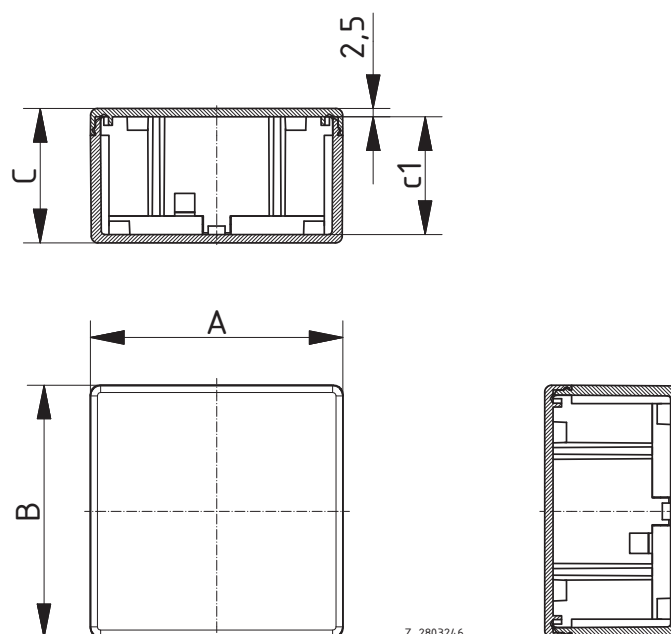
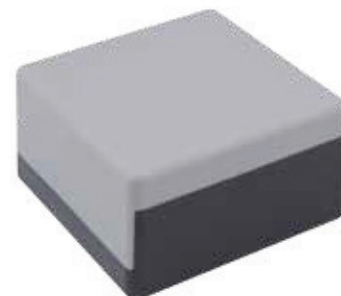
Universal

Enclosure with snap lock

Model	Order no.	A	B	C	c1
U 50	06050000	50	50	30	25
U 75	06075000	75	75	40	35
U 100	06100000	100	100	60	55

Scope of delivery: Lid, base

Note: If required, the locking function can be permanently fixed by means of screws.



Z-2803246