



Chipsmall Limited consists of a professional team with an average of over 10 year of expertise in the distribution of electronic components. Based in Hongkong, we have already established firm and mutual-benefit business relationships with customers from,Europe,America and south Asia,supplying obsolete and hard-to-find components to meet their specific needs.

With the principle of “Quality Parts,Customers Priority,Honest Operation,and Considerate Service”,our business mainly focus on the distribution of electronic components. Line cards we deal with include Microchip,ALPS,ROHM,Xilinx,Pulse,ON,Everlight and Freescale. Main products comprise IC,Modules,Potentiometer,IC Socket,Relay,Connector.Our parts cover such applications as commercial,industrial, and automotives areas.

We are looking forward to setting up business relationship with you and hope to provide you with the best service and solution. Let us make a better world for our industry!



## Contact us

Tel: +86-755-8981 8866 Fax: +86-755-8427 6832

Email & Skype: info@chipsmall.com Web: www.chipsmall.com

Address: A1208, Overseas Decoration Building, #122 Zhenhua RD., Futian, Shenzhen, China



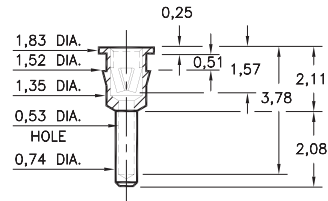
# PIN RECEPTACLES

FOR 0,38 - 0,56 DIAMETER PINS

## 0512

0512-0-15-XX-12-XX-04-0

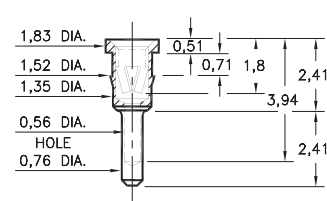
Press-fit in 1,45 mounting hole



## 0703

0703-0-15-XX-12-XX-04-0

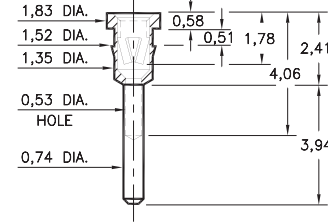
Press-fit in 1,45 mounting hole



## 0574

0574-0-15-XX-12-XX-04-0

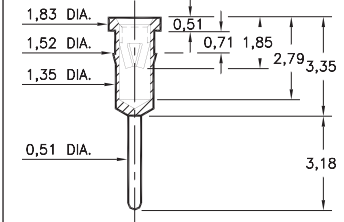
Press-fit in 1,45 mounting hole



## 0468 \*

0468-0-15-XX-12-XX-04-0

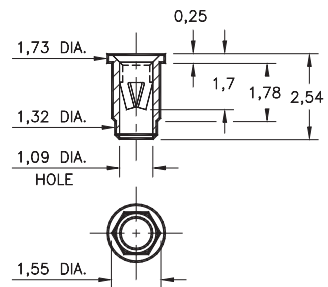
Press-fit in 1,45 mounting hole



## 8894 \*

8894-0-15-XX-12-XX-10-0

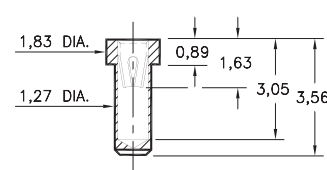
Hex press-fit in 1,5 plated through-hole



## 0550 \*

0550-0-15-XX-22-XX-10-0

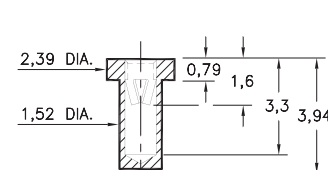
Solder mount in 1,32 min. mounting hole  
Also available on 16mm wide carrier tape:  
1,700 parts per 330mm reel  
Order as: 0550-0-57-XX-22-XX-10-0



## 0671 \*

0671-0-15-XX-12-XX-10-0

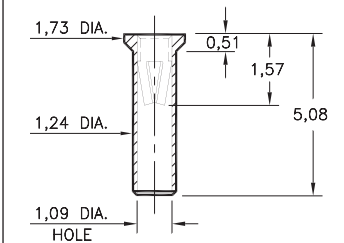
Solder mount in 1,6 min. mounting hole



## 0707 \*

0707-0-15-XX-12-XX-10-0

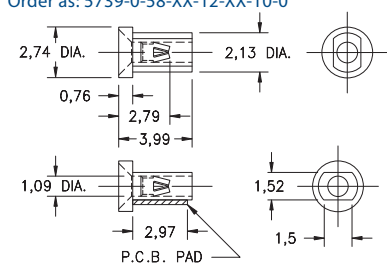
Solder mount in 1,3 min. mounting hole



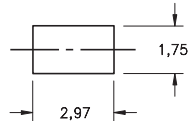
## 5739 \*

5739-0-18-XX-12-XX-10-0

Surface mount  
Also available on 16mm wide carrier tape:  
3,000 parts per 330mm reel  
Order as: 5739-0-58-XX-12-XX-10-0



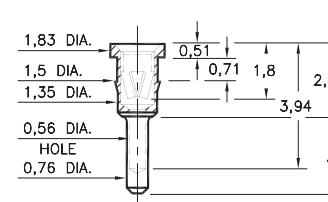
P.C.B. Layout



## 1534

1534-X-15-XX-12-XX-04-0

Press-fit in 1,42 mounting hole



Basic Part Number	Length A
1534-0	2,41
1534-1	3,18

### SPECIFICATIONS:

Shell Material: Brass Alloy 360, 1/2 Hard

Contact Material: Beryllium Copper Alloy 172, HT

Dimensions: Millimeters

Tolerances On: Lengths: ± 0,13

Diameters: ± 0,051

Angles: ± 2°



ORDER CODE: XXXX - X - XX - XX - XX - XX - XX - 0

BASIC PART #

SPECIFY SHELL FINISH:

01 5,08µm TIN/LEAD OVER NICKEL

◆ 80 5,08µm TIN OVER NICKEL (RoHS)

◆ 15 0,25µm GOLD OVER NICKEL (RoHS)

SPECIFY CONTACT FINISH:

02 2,54µm TIN/LEAD OVER NICKEL

◆ 84 2,54µm TIN OVER NICKEL (RoHS)

◆ 27 0,76µm GOLD OVER NICKEL (RoHS)

SELECT CONTACT:

#12 or #22 CONTACT (DATA ON PAGE 252)

\* (Contact may be interchanged with group B or C contact on page 248)

