



Chipsmall Limited consists of a professional team with an average of over 10 year of expertise in the distribution of electronic components. Based in Hongkong, we have already established firm and mutual-benefit business relationships with customers from,Europe,America and south Asia,supplying obsolete and hard-to-find components to meet their specific needs.

With the principle of “Quality Parts,Customers Priority,Honest Operation,and Considerate Service”,our business mainly focus on the distribution of electronic components. Line cards we deal with include Microchip,ALPS,ROHM,Xilinx,Pulse,ON,Everlight and Freescale. Main products comprise IC,Modules,Potentiometer,IC Socket,Relay,Connector.Our parts cover such applications as commercial,industrial, and automotives areas.

We are looking forward to setting up business relationship with you and hope to provide you with the best service and solution. Let us make a better world for our industry!



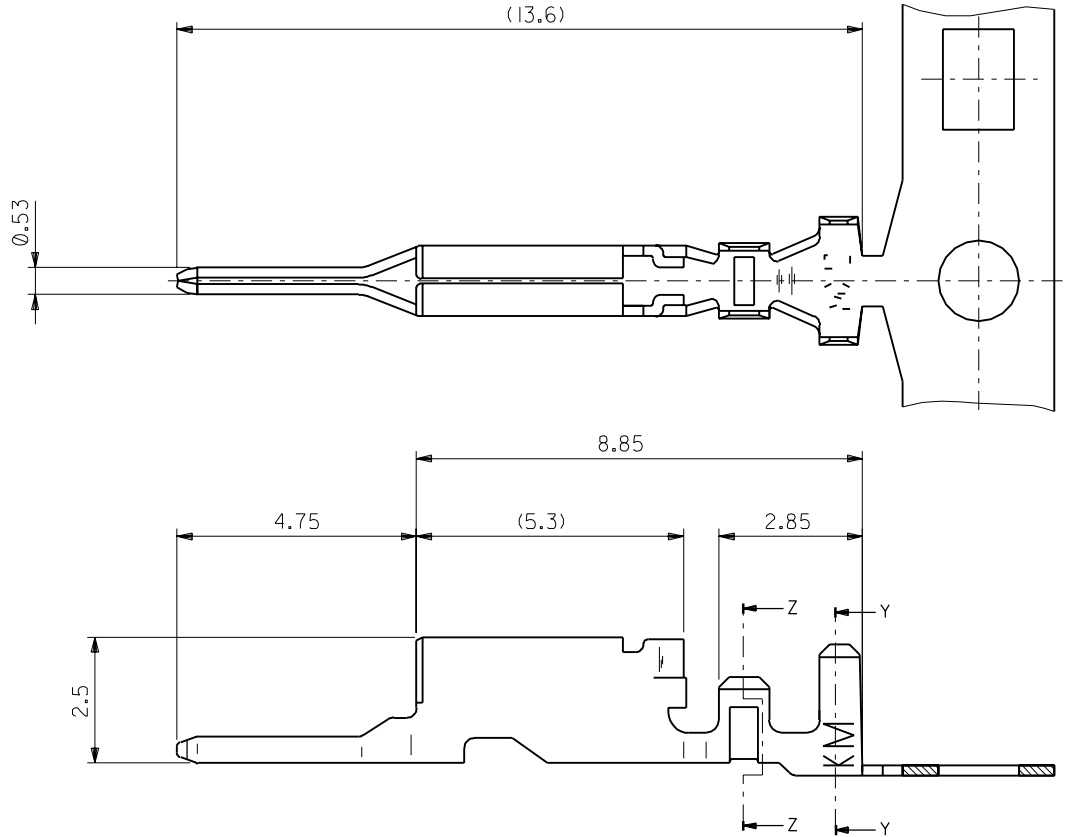
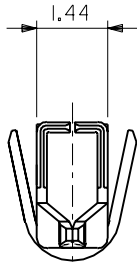
## Contact us

Tel: +86-755-8981 8866 Fax: +86-755-8427 6832

Email & Skype: [info@chipsmall.com](mailto:info@chipsmall.com) Web: [www.chipsmall.com](http://www.chipsmall.com)

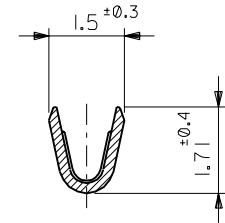
Address: A1208, Overseas Decoration Building, #122 Zhenhua RD., Futian, Shenzhen, China



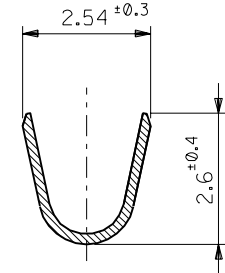


注記  
NOTES

1. 使用材料 : リン青銅, 錫メッキ (t=0.203)  
MATERIAL : PRE-TINNED PHOSPHOR BRONZE (t=0.203)
2. 適合ハウジング : 51227シリーズ  
APPLICABLE HOUSING : 51227 SERIES



SECT. Z-Z



SECT. Y-Y

56086-8100	バラ状 LOOSE
56086-8000	連鎖状 CHAIN
MATERIAL NO.	端子形状 FORM

EC NO. DRWN: CHK: APPR:		EC NO. DRWN: CHK: APPR:		EC NO. DRWN: CHK: APPR:		EC NO. DRWN: CHK: APPR:		RELEASED '01/06/13 EC NO. JC2001-0981 DRWN: H.II CHK: T.YAMAGUCHI APPR: T.YAMAGUCHI		DESCRIPTION		MATERIAL 材料  注記参照 SEE NOTES		GENERAL TOLERANCES: (UNLESS SPECIFIED) 一般公差		SCALE 10:1		DESIGN UNITS <input checked="" type="checkbox"/> mm <input type="checkbox"/> INCH		THIRD ANGLE PROJECTION 		<input type="checkbox"/> mm INCH <input type="checkbox"/> mm INCH <input checked="" type="checkbox"/> mm ONLY		REVISE ON CAD ONLY									
														10 UNDER 未満		±0.2		DRAWN BY & DATE H.II '01/06/13		TITLE: 2.0 mm WIRE TO WIRE CONN. PLUG TERMINAL													
														10 OVER 30 UNDER 以上 未満		±0.25		CHECKED BY & DATE T.YAMAGUCHI '01/06/14															
														30 OVER 以上		±0.3		APPROVED BY & DATE T.YAMAGUCHI '01/06/14		MOLEX INCORPORATED													
														WIRE RANGE 適用電線範囲		AWG #22 - #28		ANGLE 角度										±3°		CAD FILENAME 56086002.S01		MATERIAL NO. SEE CHART	
														INS. RANGE 被覆外径		Ø1.5MAXIMUM				THIS DRAWING CONTAINS INFORMATION THAT IS PROPRIETARY TO MOLEX INCORPORATED AND SHOULD NOT BE USED WITHOUT WRITTEN PERMISSION.												SIZE B	

EC NO.	DRWN:	CH'K:	APPR:	EC NO.	DRWN:	CH'K:	APPR:	EC NO.	DRWN:	CH'K:	APPR:	EC NO.	DRWN:	CH'K:	APPR:	EC NO.	DRWN:	CH'K:	APPR:

MATERIAL 材料		FINISH 仕上げ		WIRE RANGE 適用電線範囲		INS. RANGE 被覆外径	
RELEASED '01/06/13		AWG #22 - #28		Ø 1.5 MAXIMUM			
EC NO. JC2001-0981							
DRWN: H.II							
CH'K: T.YAMAGUCHI							
APPR: T.YAMAGUCHI							
REV							

GENERAL TOLERANCES: (UNLESS SPECIFIED) 一般公差		ANGLE 角度	
10 UNDER 未満		±0.2	
10 OVER 以上 30 UNDER 未満		±0.25	
30 OVER 以上		±0.3	

注記参照  
SEE NOTES

//