



Chipsmall Limited consists of a professional team with an average of over 10 year of expertise in the distribution of electronic components. Based in Hongkong, we have already established firm and mutual-benefit business relationships with customers from,Europe,America and south Asia,supplying obsolete and hard-to-find components to meet their specific needs.

With the principle of “Quality Parts,Customers Priority,Honest Operation,and Considerate Service”,our business mainly focus on the distribution of electronic components. Line cards we deal with include Microchip,ALPS,ROHM,Xilinx,Pulse,ON,Everlight and Freescale. Main products comprise IC,Modules,Potentiometer,IC Socket,Relay,Connector.Our parts cover such applications as commercial,industrial, and automotives areas.

We are looking forward to setting up business relationship with you and hope to provide you with the best service and solution. Let us make a better world for our industry!



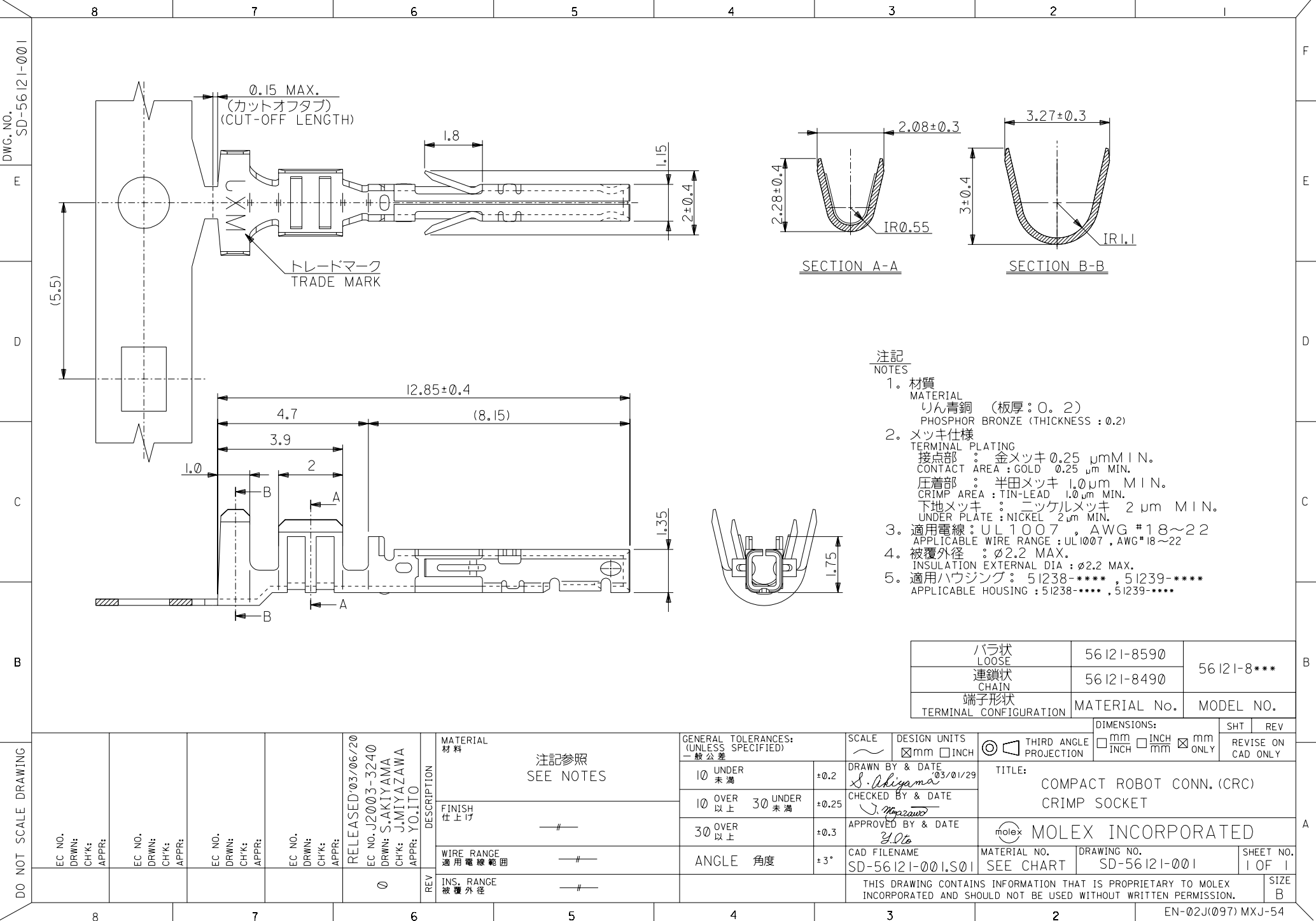
## Contact us

Tel: +86-755-8981 8866 Fax: +86-755-8427 6832

Email & Skype: [info@chipsmall.com](mailto:info@chipsmall.com) Web: [www.chipsmall.com](http://www.chipsmall.com)

Address: A1208, Overseas Decoration Building, #122 Zhenhua RD., Futian, Shenzhen, China





- 注記  
NOTES
- 材質  
MATERIAL  
りん青銅 (板厚: 0.2)  
PHOSPHOR BRONZE (THICKNESS : 0.2)
  - メッキ仕様  
TERMINAL PLATING  
接点部 : 金メッキ 0.25 μm MIN.  
CONTACT AREA : GOLD 0.25 μm MIN.  
圧着部 : 半田メッキ 1.0 μm MIN.  
CRIMP AREA : TIN-LEAD 1.0 μm MIN.  
下地メッキ : ニッケルメッキ 2 μm MIN.  
UNDER PLATE : NICKEL 2 μm MIN.
  - 適用電線: UL1007, AWG #18~22  
APPLICABLE WIRE RANGE : UL1007, AWG#18~22
  - 被覆外径: φ2.2 MAX.  
INSULATION EXTERNAL DIA : φ2.2 MAX.
  - 適用ハウジング: 51238-\*\*\*\*, 51239-\*\*\*\*  
APPLICABLE HOUSING : 51238-\*\*\*\*, 51239-\*\*\*\*

バラ状 LOOSE	56121-8590	56121-8***
連鎖状 CHAIN	56121-8490	
端子形状 TERMINAL CONFIGURATION	MATERIAL No.	MODEL No.

DO NOT SCALE DRAWING				MATERIAL 材料		GENERAL TOLERANCES: (UNLESS SPECIFIED) 一般公差		SCALE		DESIGN UNITS		THIRD ANGLE PROJECTION		DIMENSIONS:		SHT		REV	
EC NO. DRWN: CHK: APPR:				FINISH 仕上げ		10 UNDER 未満		DRAWN BY & DATE S. Akiyama 03/01/29		mm mm		mm mm		mm mm		mm mm		mm mm	
EC NO. DRWN: CHK: APPR:				WIRE RANGE 適用電線範囲		10 OVER 30 UNDER 未満		CHECKED BY & DATE J. Muraoka		mm mm		mm mm		mm mm		mm mm		mm mm	
EC NO. DRWN: CHK: APPR:				INS. RANGE 被覆外径		30 OVER 以上		APPROVED BY & DATE Y. Ota		mm mm		mm mm		mm mm		mm mm		mm mm	
EC NO. DRWN: CHK: APPR:				ANGLE 角度		30 OVER 以上		CAD FILENAME SD-56121-001.S01		mm mm		mm mm		mm mm		mm mm		mm mm	
0				REV		ANGLE 角度		THIS DRAWING CONTAINS INFORMATION THAT IS PROPRIETARY TO MOLEX INCORPORATED AND SHOULD NOT BE USED WITHOUT WRITTEN PERMISSION.		MATERIAL NO. SEE CHART		DRAWING NO. SD-56121-001		SHEET NO. 1 OF 1		SIZE B			