



Chipsmall Limited consists of a professional team with an average of over 10 year of expertise in the distribution of electronic components. Based in Hongkong, we have already established firm and mutual-benefit business relationships with customers from,Europe,America and south Asia,supplying obsolete and hard-to-find components to meet their specific needs.

With the principle of "Quality Parts,Customers Priority,Honest Operation,and Considerate Service",our business mainly focus on the distribution of electronic components. Line cards we deal with include Microchip,ALPS,ROHM,Xilinx,Pulse,ON,Everlight and Freescale. Main products comprise IC,Modules,Potentiometer,IC Socket,Relay,Connector.Our parts cover such applications as commercial,industrial, and automotives areas.

We are looking forward to setting up business relationship with you and hope to provide you with the best service and solution. Let us make a better world for our industry!



Contact us

Tel: +86-755-8981 8866 Fax: +86-755-8427 6832

Email & Skype: info@chipsmall.com Web: www.chipsmall.com

Address: A1208, Overseas Decoration Building, #122 Zhenhua RD., Futian, Shenzhen, China



10 9 8 7 6 5 4 3 2 1

F

E

D

C

B

A

F

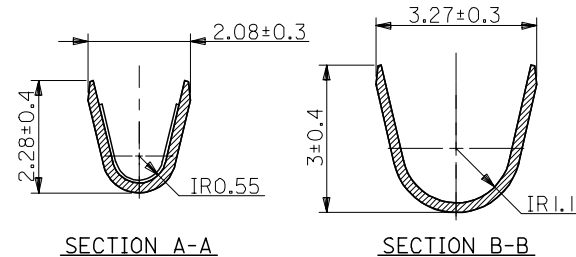
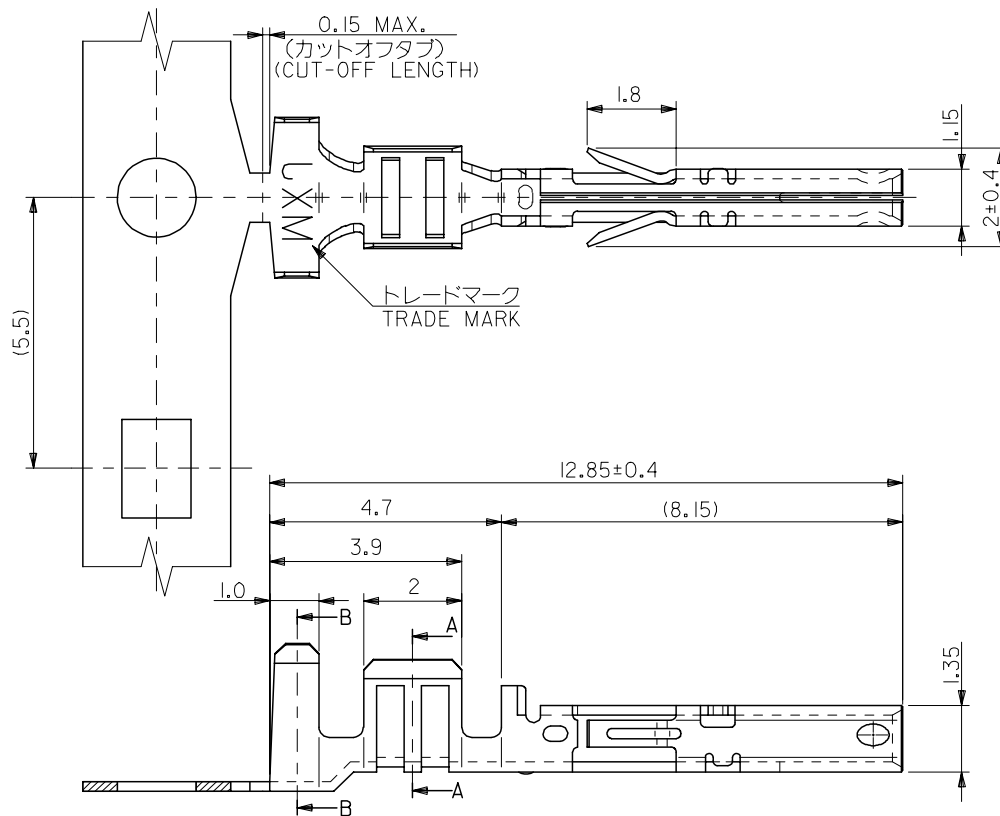
E

D

C

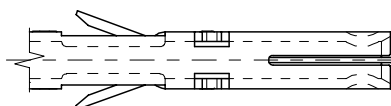
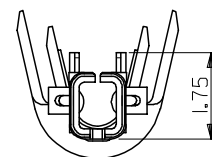
B

A



注記
NOTES

- 材質
MATERIAL
りん青銅 (板厚: 0.2)
PHOSPHOR BRONZE (THICKNESS : 0.2)
- メッキ仕様
TERMINAL PLATING
接点部 : 金メッキ 0.25 μ m MIN.
CONTACT AREA : GOLD 0.25 μ m MIN.
圧着部 : 錫メッキ 1.0 μ m MIN.
CRIMP AREA : TIN 1.0 μ m MIN.
下地メッキ : ニッケルメッキ 2 μ m MIN.
UNDER PLATE : NICKEL 2 μ m MIN.
- 適用電線 : UL1007, AWG #18~22
APPLICABLE WIRE RANGE : UL1007, AWG #18~22
- 被覆外径 : ϕ 2.2 MAX.
INSULATION EXTERNAL DIA : ϕ 2.2 MAX.
- 適用ハウジング : 51238-****, 51239-****
APPLICABLE HOUSING : 51238-****, 51239-****



バラ状 LOOSE	56121-8728	56121-8***
連鎖状 CHAIN	56121-8628	
端子形状 TERMINAL CONFIGURATION	MATERIAL NO.	MODEL NO.

GENERAL TOLERANCES (UNLESS SPECIFIED)		DIMENSION STYLE MM ONLY	SCALE ---	DESIGN UNITS METRIC	THIRD ANGLE PROJECTION
10 UNDER	±0.2	DRAWN BY Y. AOYAGI	DATE 2005/02/28	COMPACT ROBOT CONN. 50CKT. CRIMP SOCKET -LEAD FREE-	
10 OVER 30 UNDER	±0.25	CHECKED BY M. TANAKA	DATE 2005/02/28		
30 OVER	±0.3	APPROVED BY N. UKITA	DATE 2005/02/28	MOLEX INCORPORATED	
ANGULAR	±3 °	MATERIAL NO.	DOCUMENT NO.		
DRAFT WHERE APPLICABLE MUST REMAIN WITHIN DIMENSIONS		SIZE A3	SEE CHART		SHEET NO. 1 OF 1