



Chipsmall Limited consists of a professional team with an average of over 10 year of expertise in the distribution of electronic components. Based in Hongkong, we have already established firm and mutual-benefit business relationships with customers from,Europe,America and south Asia,supplying obsolete and hard-to-find components to meet their specific needs.

With the principle of “Quality Parts,Customers Priority,Honest Operation,and Considerate Service”,our business mainly focus on the distribution of electronic components. Line cards we deal with include Microchip,ALPS,ROHM,Xilinx,Pulse,ON,Everlight and Freescale. Main products comprise IC,Modules,Potentiometer,IC Socket,Relay,Connector.Our parts cover such applications as commercial,industrial, and automotives areas.

We are looking forward to setting up business relationship with you and hope to provide you with the best service and solution. Let us make a better world for our industry!



## Contact us

Tel: +86-755-8981 8866 Fax: +86-755-8427 6832

Email & Skype: [info@chipsmall.com](mailto:info@chipsmall.com) Web: [www.chipsmall.com](http://www.chipsmall.com)

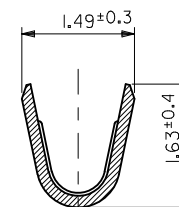
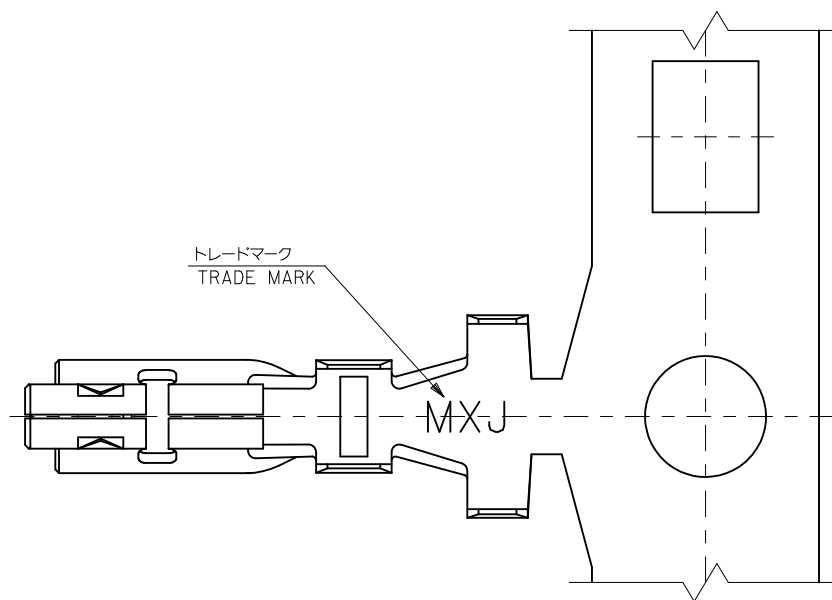
Address: A1208, Overseas Decoration Building, #122 Zhenhua RD., Futian, Shenzhen, China



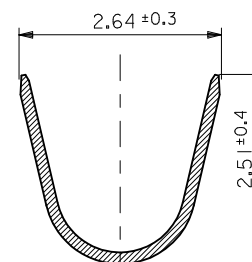
10 9 8 7 6 5 4 3 2 1

注記  
NOTES

1. 使用材料 : 銅合金, 銅メッキ (t=0.15)  
MATERIAL : PRE-TINNED COPPER ALLOY
2. 適合ハウジング : 51242, 51382, 51353シリーズ  
APPLICABLE HOUSING : 51242, 51382, 51353 SERIES
3. ELV及びRoHS適合品  
ELV AND RoHS COMPLIANT.



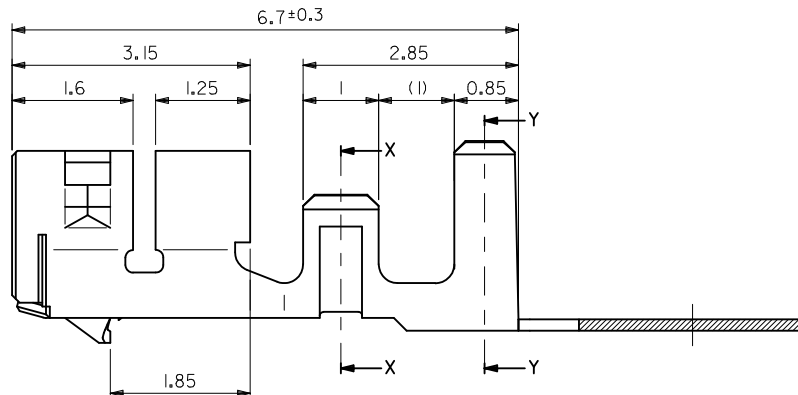
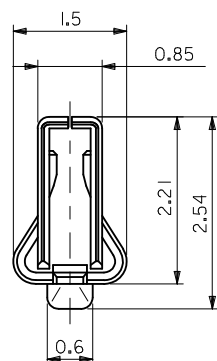
SECT. X-X



SECT. Y-Y

無鉛  
LEAD FREE

56134-9100	バラ状 LOOSE
56134-9000	連鎖状 CHAIN
MATERIAL NO.	端子形状 FORM




MATERIAL 材料	FINISH 仕上げ
注記参照 SEE NOTES	—//—
WIRE RANGE 適用電線範囲	
AWG#22~#28 : 0.079~0.34mm <sup>2</sup> KV0.2~0.4 : 0.2~0.4mm <sup>2</sup>	
INS. RANGE 被覆外径	
Ø0.9 ~ Ø1.7 mm	

REVISED	2011/01/20
EC NO: J2011-0960	2011/01/20
DRWN:RHORI	2011/01/20
CHKD:KASAKAWA	2011/01/20
APPR:NUKITA	2011/01/21
REV	DESCRIPTION
C	

GENERAL TOLERANCES (UNLESS SPECIFIED)	
10 UNDER	±0.2
10 OVER 30 UNDER	±0.25
30 OVER	±0.3
ANGULAR	±3 °
DRAFT WHERE APPLICABLE MUST REMAIN WITHIN DIMENSIONS	

DIMENSION STYLE MM ONLY	
DRAWN BY	DATE
NITO	2002/02/28
CHECKED BY	DATE
KASAKAWA	2003/06/12
APPROVED BY	DATE
MATERIAL NO.	
SEE CHART	
SIZE	
A3	

SCALE 15:1	DESIGN UNITS METRIC		THIRD ANGLE PROJECTION
TITLE			
2.0 WIRE TO BOARD CONN. CRIMP RECEPTACLE			
MOLEX INCORPORATED			
DOCUMENT NO. SD-56134-005			SHEET NO. 1 OF 1
THIS DRAWING CONTAINS INFORMATION THAT IS PROPRIETARY TO MOLEX SHOULD NOT BE USED WITHOUT WRITTEN PERMISSION			