



Chipsmall Limited consists of a professional team with an average of over 10 year of expertise in the distribution of electronic components. Based in Hongkong, we have already established firm and mutual-benefit business relationships with customers from,Europe,America and south Asia,supplying obsolete and hard-to-find components to meet their specific needs.

With the principle of "Quality Parts,Customers Priority,Honest Operation,and Considerate Service",our business mainly focus on the distribution of electronic components. Line cards we deal with include Microchip,ALPS,ROHM,Xilinx,Pulse,ON,Everlight and Freescale. Main products comprise IC,Modules,Potentiometer,IC Socket,Relay,Connector.Our parts cover such applications as commercial,industrial, and automotives areas.

We are looking forward to setting up business relationship with you and hope to provide you with the best service and solution. Let us make a better world for our industry!



Contact us

Tel: +86-755-8981 8866 Fax: +86-755-8427 6832

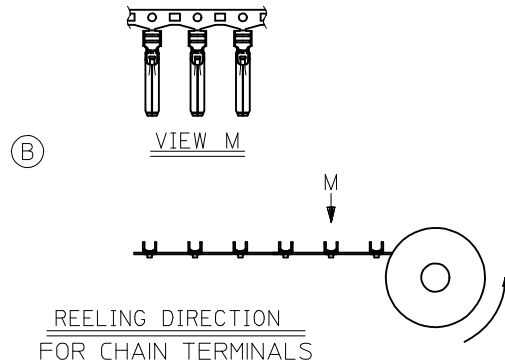
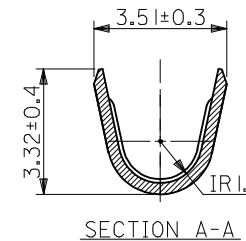
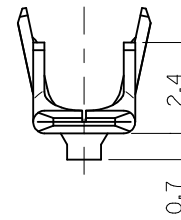
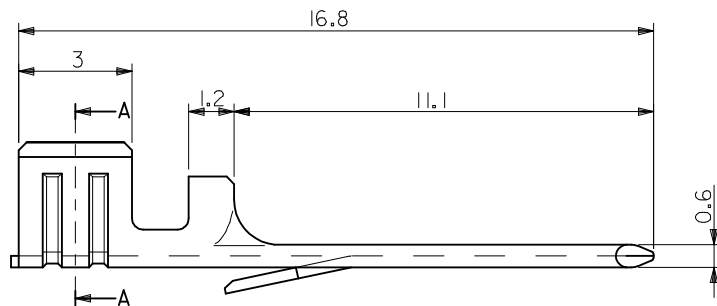
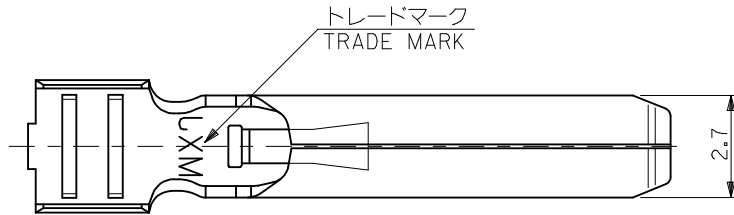
Email & Skype: info@chipsmall.com Web: www.chipsmall.com


Address: A1208, Overseas Decoration Building, #122 Zhenhua RD., Futian, Shenzhen, China



注記
NOTES

1. 材質
MATERIAL
黄銅 (板厚: 0.3)
BRASS (THICKNESS: 0.3)
2. メッキ仕様
TERMINAL PLATING
接点部 : 金メッキ 0.25 μm MIN.
CONTACT AREA: GOLD 0.25 μm MIN.
圧着部 : 錫メッキ 1.0 μm MIN.
CRIMP AREA: TIN 1.0 μm MIN.
下地メッキ : ニッケルメッキ 2 μm MIN.
UNDER PLATE: NICKEL 2 μm MIN.
3. 適用電線範囲: UL 1015, AWG #18~14
APPLICABLE WIRE RANGE: UL1015, AWG#18~14
4. 被覆外径: $\phi 3.8$ MAX.
INSULATION EXTERNAL DIA: $\phi 3.8$ MAX.
5. 適用ハウジング: 55890-****, 55891-****
APPLICABLE HOUSING: 55890-****, 55891-****
6. 適用圧着工具 (手動) : 57413-5300 (適用電線: AWG #16~14)
APPLICABLE CRIMP TOOL (HAND): 57413-5300 (APPLICABLE WIRE AWG#16~14)
: 57413-5400 (適用電線: AWG #18)
: 57413-5400 (APPLICABLE WIRE AWG#18)
: 63819-2200 (AWG #18-14)
7. TERMINAL EXTRACTION TOOL : 63813-2800
8. 本製品は 56193-4185 の鉛フリー品である。
THIS PRODUCT IS LEAD FREE OF 56193-4185.



⑧	CHAIN		56193-4028	56193-4***
	バラ状 LOOSE		56193-4128	56193-4***
	端子形状 TERMINAL CONFIGURATION		MATERIAL No.	MODEL No.
DIMENSION STYLE MM ONLY		SCALE 1:1	DESIGN UNITS METRIC	 THIRD ANGLE PROJECTION
DRAWN BY NABEI		DATE '07/10/30	COMPACT ROBOT CONN. POWER CRIMP PIN -LEAD FREE- MOLEX INCORPORATED	
CHECKED BY ISOGAYA		DATE '07/10/30		
APPROVED BY UKITA		DATE '07/10/30		
MATERIAL NO.		DOCUMENT NO.	SHEET NO. 1 OF 1	
SEE TABLE		SD-56193-003		
THIS DRAWING CONTAINS INFORMATION THAT IS PROPRIETARY TO MOLEX INCORPORATED AND SHOULD NOT BE USED WITHOUT WRITTEN PERMISSION				

ADDED CHAIN TERM. EC NO: WNA2009-0729 DRWN: TMOELLER 2009/05/06 CHKD: RDEROSS 2009/05/07 APPR: RDEROSS 2009/05/07	DESCRIPTION	GENERAL TOLERANCES (UNLESS SPECIFIED)	
		10 UNDER	± 0.2
		10 OVER 30 UNDER	± 0.25
		30 OVER	± 0.3
		ANGULAR ±3 °	
	REV	DRAFT WHERE APPLICABLE MUST REMAIN WITHIN DIMENSIONS	