



Chipsmall Limited consists of a professional team with an average of over 10 year of expertise in the distribution of electronic components. Based in Hongkong, we have already established firm and mutual-benefit business relationships with customers from,Europe,America and south Asia,supplying obsolete and hard-to-find components to meet their specific needs.

With the principle of “Quality Parts,Customers Priority,Honest Operation,and Considerate Service”,our business mainly focus on the distribution of electronic components. Line cards we deal with include Microchip,ALPS,ROHM,Xilinx,Pulse,ON,Everlight and Freescale. Main products comprise IC,Modules,Potentiometer,IC Socket,Relay,Connector.Our parts cover such applications as commercial,industrial, and automotives areas.

We are looking forward to setting up business relationship with you and hope to provide you with the best service and solution. Let us make a better world for our industry!



Contact us

Tel: +86-755-8981 8866 Fax: +86-755-8427 6832

Email & Skype: info@chipsmall.com Web: www.chipsmall.com

Address: A1208, Overseas Decoration Building, #122 Zhenhua RD., Futian, Shenzhen, China



DWG. NO.
SD-56265-001

F

D

V

C

B

DO NOT SCALE DRAWING

8

7

6

5

4

3

2

1

F

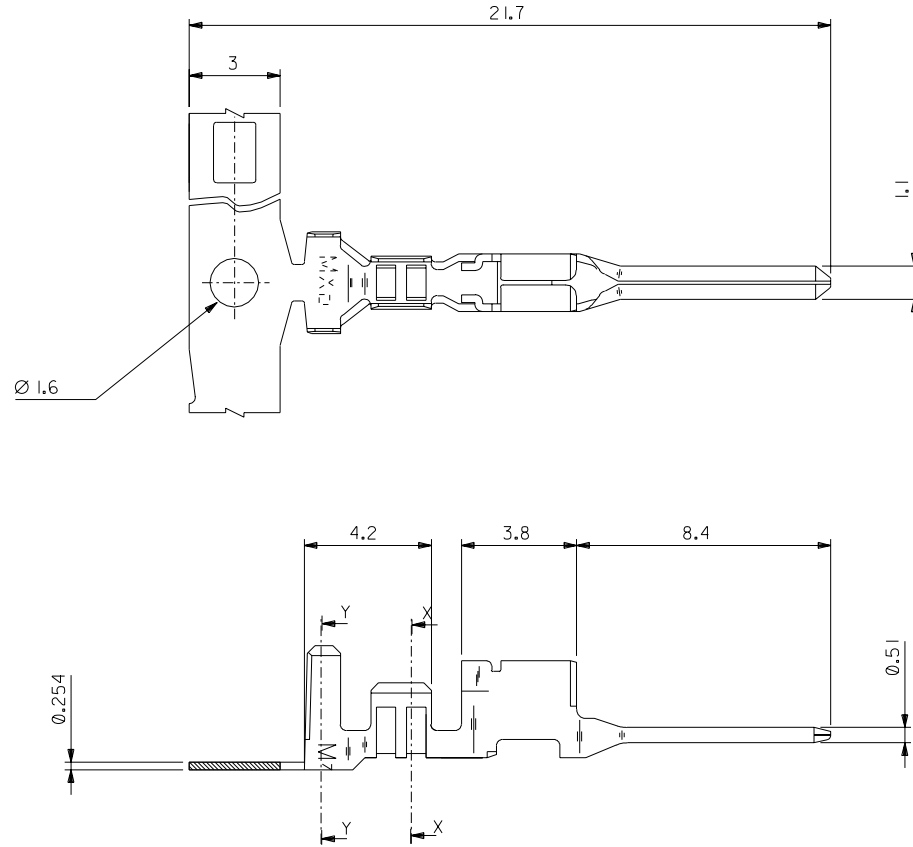
E

D

C

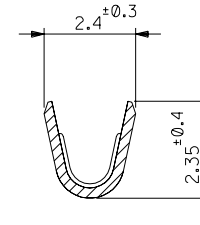
B

SD56265001.S01

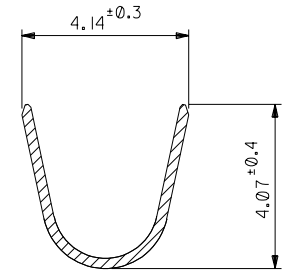


注記
NOTES

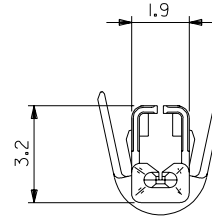
1. 使用材料 : リン青銅, 錫メッキ (t=0.254)
MATERIAL : PRE-TINNED PHOSPHOR BRONZE (t=0.254)
2. 適合ハウジング : 51346シリーズ
APPLICABLE HOUSING : 51346 SERIES



SECT. X-X



SECT. Y-Y



| | |
|--------------|--------------|
| 56265-8100 | バラ状 LOOSE |
| 56265-8000 | 連鎖状 CHAIN |
| MATERIAL NO. | 端子形状 FORM |

| | | | | | | | | | | | | | | | | | |
|----------------------------------|----------------------------------|---|---|--|--------------------|---------------------------------------|--|---|--------------------------------|--|---------------------------|--|-----------------------------|------------|---------------------|-----------------------|--|
| EC NO. DRWN: CHK: APPR: | EC NO. DRWN: CHK: APPR: | REVISED EC NO. J2003-2363 DRWN: H.II '03/03/14 CHK: K.ASAKAWA APPR: T.YAMAGUCHI | REVISED EC NO. J2003-1314 DRWN: H.II '02/11/08 CHK: K.ASAKAWA APPR: T.YAMAGUCHI | RELEASED EC NO. J2003-1178 DRWN: H.II '02/10/29 CHK: K.ASAKAWA APPR: T.YAMAGUCHI | DESCRIPTION REV | MATERIAL 材料 注記参照 SEE NOTES | | GENERAL TOLERANCES: (UNLESS SPECIFIED) 一般公差 | | SCALE // | DESIGN UNITS ☑mm ☐INCH | THIRD ANGLE PROJECTION | mm INCH | mm INCH | mm ONLY | REVISE ON CAD ONLY | |
| | | | | | | FINISH 仕上り // | | 10 UNDER 未満 | ±0.2 | DRAWN BY & DATE H.II '02/10/29 | | TITLE: 3.3 mm WIRE TO WIRE CONN. PLUG TERMINAL | | | | | |
| | | | | | | WIRE RANGE 適用電線範囲 AWG #18 - #20 | | 10 OVER 30 UNDER 以上 未満 | ±0.25 | CHECKED BY & DATE K.ASAKAWA '02/10/29 | | | | | | | |
| | | | | | | INS. RANGE 被覆外径 Ø2.6MAX. | | 30 OVER 以上 | ±0.3 | APPROVED BY & DATE T.YAMAGUCHI '02/10/29 | | MOLEX INCORPORATED | | | | | |
| | | | | | | ANGLE 角度 | | ±3° | CAD FILENAME SD56265001.S01 | | MATERIAL NO. SEE CHART | | DRAWING NO. SD-56265-001 | | SHEET NO. 1 OF 1 | | |
| | | | | | | | | | | THIS DRAWING CONTAINS INFORMATION THAT IS PROPRIETARY TO MOLEX INCORPORATED AND SHOULD NOT BE USED WITHOUT WRITTEN PERMISSION. | | | | | | SIZE B | |

8

7

6

5

4

3

2

EN-02J(097) MXJ-54