



Chipsmall Limited consists of a professional team with an average of over 10 year of expertise in the distribution of electronic components. Based in Hongkong, we have already established firm and mutual-benefit business relationships with customers from,Europe,America and south Asia,supplying obsolete and hard-to-find components to meet their specific needs.

With the principle of “Quality Parts,Customers Priority,Honest Operation,and Considerate Service”,our business mainly focus on the distribution of electronic components. Line cards we deal with include Microchip,ALPS,ROHM,Xilinx,Pulse,ON,Everlight and Freescale. Main products comprise IC,Modules,Potentiometer,IC Socket,Relay,Connector.Our parts cover such applications as commercial,industrial, and automotives areas.

We are looking forward to setting up business relationship with you and hope to provide you with the best service and solution. Let us make a better world for our industry!



Contact us

Tel: +86-755-8981 8866 Fax: +86-755-8427 6832

Email & Skype: info@chipsmall.com Web: www.chipsmall.com

Address: A1208, Overseas Decoration Building, #122 Zhenhua RD., Futian, Shenzhen, China



DWG. NO.
SD-56377-004

F

D

V

C

B

DO NOT SCALE DRAWING

8

7

6

5

4

3

2

1

F

E

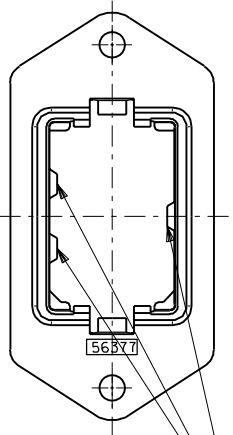
D

C

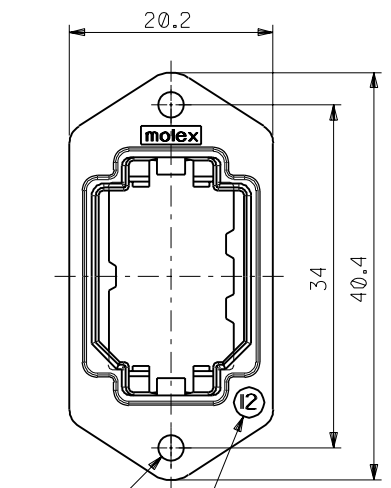
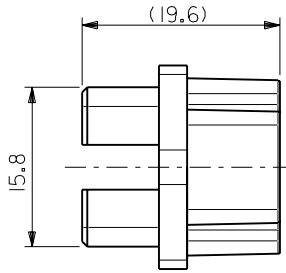
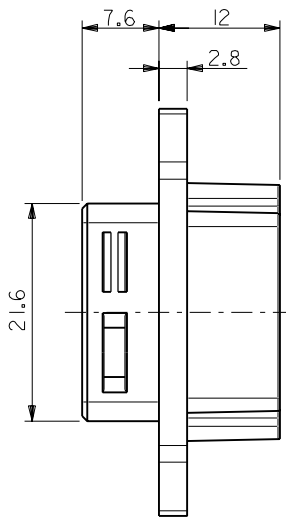
B

A

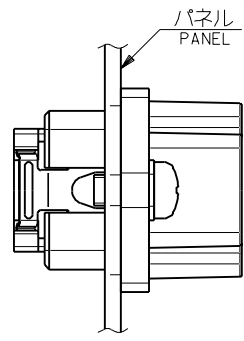
56377004.S01



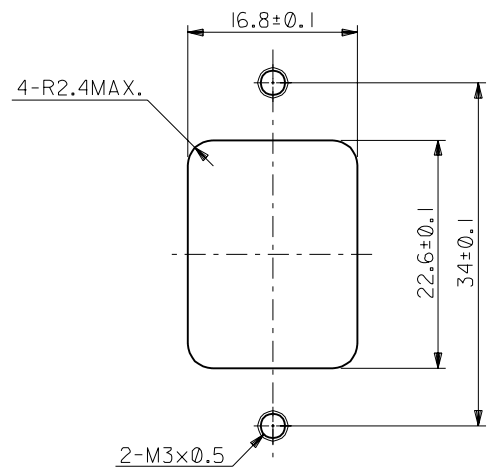
ハウジング挿入方向キー
POLARIZATIONS KEY FOR HOUSING



SIZE IDENTIFICATION



パネル前面取り付け
FRONT MOUNT TYPE



推奨パネル切り取り寸法 (前面取り付け)
RECOMMENDED PANEL OPENING (FRONT MOUNTING)

注記
NOTES

- 材 質
MATERIAL
亜鉛合金、ニッケルメッキ
ZINC ALLOY, NI PLATING
- 適用ハウジングアッセンブリ: 51233-121* (PIN HS'G ASS'Y)
51238-121* (SOCKET HS'G ASS'Y)
55890-041* (PIN HS'G ASS'Y)
51300-041* (SOCKET HS'G ASS'Y)
APPLICABLE HOUSING ASS'Y: 51233-121* (PIN HS'G ASS'Y)
51238-121* (SOCKET HS'G ASS'Y)
55890-041* (PIN HS'G ASS'Y)
51300-041* (SOCKET HS'G ASS'Y)
- 推奨ねじ締め付けトルク: 5~6 kgf・cm
RECOMENDED SCREW TIGHTENING TORQUE: 5~6 kgf・cm

56377-1200 56377-****

MATERIAL.NO MODEL.NO

DIMENSIONS:
☐ mm ☐ INCH ☒ mm ONLY
SHT REV
REVISE ON CAD ONLY

TITLE:
COMPACT ROBOT CONN.(CRC)
RECEPTACLE SHELL

MOLEX INCORPORATED

MATERIAL NO. DRAWING NO. SHEET NO.
SEE CHART SD-56377-004 1 OF 1

THIS DRAWING CONTAINS INFORMATION THAT IS PROPRIETARY TO MOLEX INCORPORATED AND SHOULD NOT BE USED WITHOUT WRITTEN PERMISSION.

SIZE
B

EN-02J(097) MXJ-54

EC NO. DRWN: CH'K: APPR:
EC NO. DRWN: CH'K: APPR:
EC NO. DRWN: CH'K: APPR:
REVISED 01/10/17
EC NO. J2002-0932
DRWN: S.AKIYAMA
CH'K: J.MIYAZAWA
APPR: Y.O.ITO
A
0
EC NO. JD2001-1040
DRWN: S.AKIYAMA
CH'K: J.MIYAZAWA
APPR: H.IKESUGI

MATERIAL 材料
注記参照
SEE NOTES
FINISH 仕上げ
WIRE RANGE 適用電線範囲
INS. RANGE 被覆外径

GENERAL TOLERANCES:
(UNLESS SPECIFIED)
一般公差
10 UNDER 未満
10 OVER 以上
30 UNDER 未満
30 OVER 以上
ANGLE 角度

SCALE 2-1
DESIGN UNITS
THIRD ANGLE PROJECTION
DRAWN BY & DATE
S. Akizawa 01/01/25
CHECKED BY & DATE
J. Miyazawa / Y. Ito
APPROVED BY & DATE
CAD FILE NAME
56377004.S01

THIS DRAWING CONTAINS INFORMATION THAT IS PROPRIETARY TO MOLEX INCORPORATED AND SHOULD NOT BE USED WITHOUT WRITTEN PERMISSION.