



Chipsmall Limited consists of a professional team with an average of over 10 year of expertise in the distribution of electronic components. Based in Hongkong, we have already established firm and mutual-benefit business relationships with customers from,Europe,America and south Asia,supplying obsolete and hard-to-find components to meet their specific needs.

With the principle of “Quality Parts,Customers Priority,Honest Operation,and Considerate Service”,our business mainly focus on the distribution of electronic components. Line cards we deal with include Microchip,ALPS,ROHM,Xilinx,Pulse,ON,Everlight and Freescale. Main products comprise IC,Modules,Potentiometer,IC Socket,Relay,Connector.Our parts cover such applications as commercial,industrial, and automotives areas.

We are looking forward to setting up business relationship with you and hope to provide you with the best service and solution. Let us make a better world for our industry!



## Contact us

Tel: +86-755-8981 8866 Fax: +86-755-8427 6832

Email & Skype: [info@chipsmall.com](mailto:info@chipsmall.com) Web: [www.chipsmall.com](http://www.chipsmall.com)

Address: A1208, Overseas Decoration Building, #122 Zhenhua RD., Futian, Shenzhen, China



DWG. NO.  
SD-56377-008

F

D

A

C

B

DO NOT SCALE DRAWING

EC NO. DRWN: CHK'g APPR:	EC NO. DRWN: CHK'g APPR:	EC NO. DRWN: CHK'g APPR:	REVISED 01/10/17 EC NO. J2002-0932 DRWN: S.AKIYAMA CHK'g: J.MIYAZAWA APPR: Y.O.ITO	0 EC NO. JD2001-1040 DRWN: S.AKIYAMA CHK'g: J.MIYAZAWA APPR: H.IKESUGI
A				

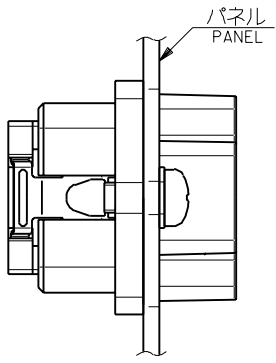
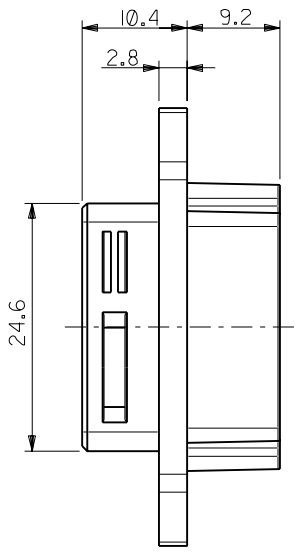
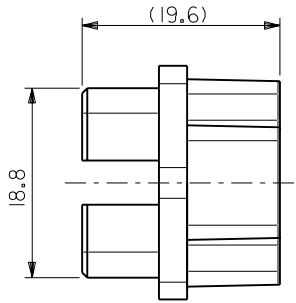
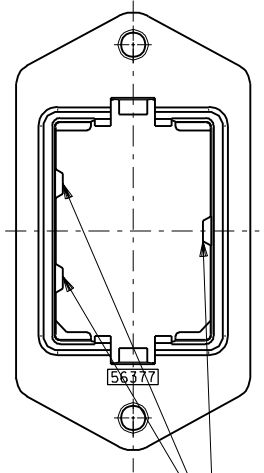
MATERIAL 材料	注記参照 SEE NOTES
FINISH 仕上げ	—
WIRE RANGE 適用電線範囲	—
INS. RANGE 被覆外径	—

GENERAL TOLERANCES: (UNLESS SPECIFIED) 一般公差	SCALE 2-1	DESIGN UNITS <input checked="" type="checkbox"/> mm <input type="checkbox"/> INCH	THIRD ANGLE PROJECTION
10 UNDER 未満	±0.2	DRAWN BY & DATE S. Akiyama 01/10/17	CHECKED BY & DATE J. Miyazawa / Y. Ito
10 OVER 30 UNDER 以上 未満	±0.25	APPROVED BY & DATE H. Ikessugi	CAD FILE NAME 56377008.S01
30 OVER 以上	±0.3		
ANGLE 角度	±3°		

THIS DRAWING CONTAINS INFORMATION THAT IS PROPRIETARY TO MOLEX INCORPORATED AND SHOULD NOT BE USED WITHOUT WRITTEN PERMISSION.	SIZE B
--	-----------

56377-2001 56377-****	
MATERIAL.NO MODEL.NO	
DIMENSIONS: <input type="checkbox"/> mm <input type="checkbox"/> INCH <input checked="" type="checkbox"/> mm ONLY	
SHT REV REVISE ON CAD ONLY	
TITLE: COMPACT ROBOT CONN.(CRC) RECEPTACLE SHELL	
MOLEX MOLEX INCORPORATED	
MATERIAL NO. SEE CHART	DRAWING NO. SD-56377-008
SHEET NO. 1 OF 1	

ハウジング挿入方向キー  
POLARIZATIONS KEY FOR HOUSING



パネル後面取り付け  
REAR MOUNT TYPE

注記  
NOTES

1. 材 質  
MATERIAL  
亜鉛合金、ニッケルメッキ  
ZINC ALLOY, NI PLATING
2. 適用ハウジングアッセンブリ: 51233-201\* (PIN HS'G ASS'Y)  
51238-201\* (SOCKET HS'G ASS'Y)  
APPLICABLE HOUSING ASS'Y: 51233-201\* (PIN HS'G ASS'Y)  
51238-201\* (SOCKET HS'G ASS'Y)
3. 推奨ねじ締め付けトルク: 5~6 kgf・cm  
RECOMMENDED SCREW TIGHTENING TORQUE: 5~6 kgf・cm

推奨パネル切り取り寸法 (後面取り付け)  
RECOMMENDED PANEL OPENING (REAR MOUNTING)

