



Chipsmall Limited consists of a professional team with an average of over 10 year of expertise in the distribution of electronic components. Based in Hongkong, we have already established firm and mutual-benefit business relationships with customers from,Europe,America and south Asia,supplying obsolete and hard-to-find components to meet their specific needs.

With the principle of “Quality Parts,Customers Priority,Honest Operation,and Considerate Service”,our business mainly focus on the distribution of electronic components. Line cards we deal with include Microchip,ALPS,ROHM,Xilinx,Pulse,ON,Everlight and Freescale. Main products comprise IC,Modules,Potentiometer,IC Socket,Relay,Connector.Our parts cover such applications as commercial,industrial, and automotives areas.

We are looking forward to setting up business relationship with you and hope to provide you with the best service and solution. Let us make a better world for our industry!



Contact us

Tel: +86-755-8981 8866 Fax: +86-755-8427 6832

Email & Skype: info@chipsmall.com Web: www.chipsmall.com

Address: A1208, Overseas Decoration Building, #122 Zhenhua RD., Futian, Shenzhen, China



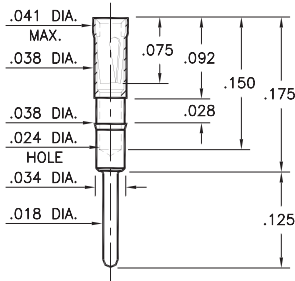
PIN RECEPTACLES

**FOR .015" - .018" DIAMETER PINS (#09 CONTACT)
FOR .015" - .020" DIAMETER PINS (#11 CONTACT)
AND .015" - .022" DIAMETER PINS (#21 CONTACT)**

0467

0467-0-15-XX-21-XX-04-0

Press-fit in .037 mounting hole

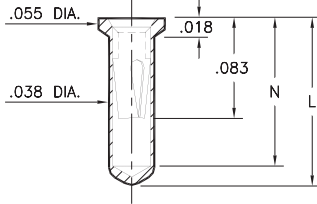


0552

0552-X-15-XX-X1-XX-10-0

Solder mount in .040 min. mounting hole
Also available on 16mm wide carrier tape:
1,500 parts per 13" reel

Order as: 0552-X-57-XX-X1-XX-10-0

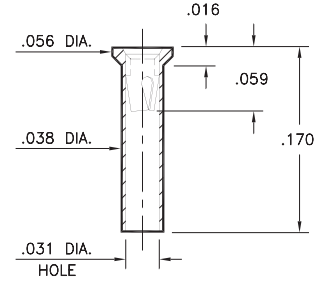


Basic Part Number	Length L	Depth N
0552-1	.136	.120
0552-2	.170	.150

5522

5522-0-15-XX-09-XX-10-0

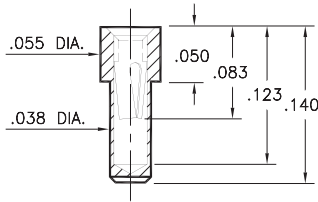
Solder mount in .040 min. mounting hole



0569

0569-0-15-XX-X1-XX-10-0

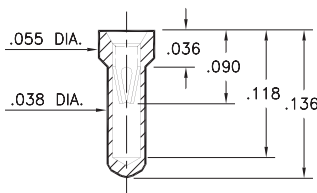
Solder mount in .040 min. mounting hole
Also available on 16mm wide carrier tape:
2,000 parts per 13" reel
Order as: 0569-0-57-XX-X1-XX-10-0



6023

6023-0-15-XX-21-XX-10-0

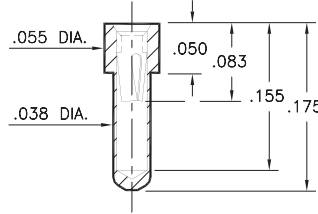
Solder mount in .040 min. mounting hole



6214

6214-0-15-XX-21-XX-10-0

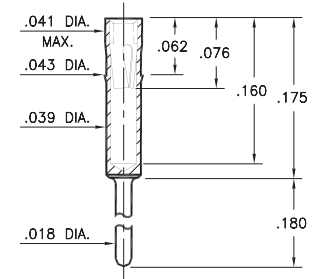
Solder mount in .040 min. mounting hole



2086

2086-0-15-XX-21-XX-04-0

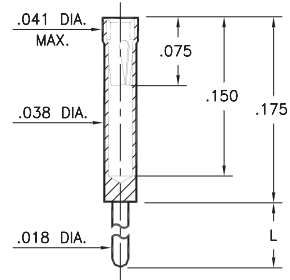
Press-fit in .040 mounting hole



0461

0461-X-15-XX-X1-XX-04-0

Solder mount in .020 min. mounting hole

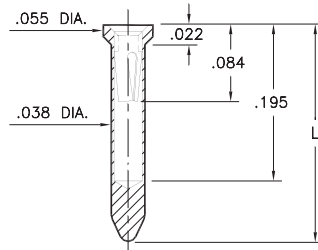


Basic Part Number	Length L
0461-0	.400
0461-1	.275
0461-2	.180
0461-3	.125
0461-4	.060
0461-5	.440

8579

8579-X-15-XX-X1-XX-10-0

Solder mount in .040 min. mounting hole
Also available on 24mm wide carrier tape:
1,200 parts per 13" reel
Order as: 8579-0-57-XX-X1-XX-10-0



Basic Part Number	Length L
8579-0	.234
8579-1	.295

SPECIFICATIONS:

Shell Material: Brass Alloy 360, 1/2 Hard

Contact Material: Beryllium Copper Alloy 172, HT

Dimensions: Inches

Tolerances On: Lengths: ±.005

Diameters: ±.002

Angles: ±2°



ORDER CODE: XXXX - X - XX - XX - XX - XX - 0

BASIC PART #

SPECIFY SHELL FINISH:

- 01 200 μ" TIN/LEAD OVER NICKEL
- ◆ 80 200 μ" TIN OVER NICKEL (RoHS)
- ◆ 15 10 μ" GOLD OVER NICKEL (RoHS)

SPECIFY CONTACT FINISH:

- 02 100 μ" TIN/LEAD OVER NICKEL
- ◆ 84 100 μ" TIN OVER NICKEL (RoHS)
- ◆ 27 30 μ" GOLD OVER NICKEL (RoHS)

SELECT CONTACT:

#09, #11 or #21 CONTACT (DATA ON PAGES 250 & 251)
(For alternate contact choices, see group A on page 248)

