



Chipsmall Limited consists of a professional team with an average of over 10 year of expertise in the distribution of electronic components. Based in Hongkong, we have already established firm and mutual-benefit business relationships with customers from,Europe,America and south Asia,supplying obsolete and hard-to-find components to meet their specific needs.

With the principle of “Quality Parts,Customers Priority,Honest Operation,and Considerate Service”,our business mainly focus on the distribution of electronic components. Line cards we deal with include Microchip,ALPS,ROHM,Xilinx,Pulse,ON,Everlight and Freescale. Main products comprise IC,Modules,Potentiometer,IC Socket,Relay,Connector.Our parts cover such applications as commercial,industrial, and automotives areas.

We are looking forward to setting up business relationship with you and hope to provide you with the best service and solution. Let us make a better world for our industry!



Contact us

Tel: +86-755-8981 8866 Fax: +86-755-8427 6832

Email & Skype: info@chipsmall.com Web: www.chipsmall.com

Address: A1208, Overseas Decoration Building, #122 Zhenhua RD., Futian, Shenzhen, China



DWG. NO.
SD-57990-001

SIMILAR ITEM

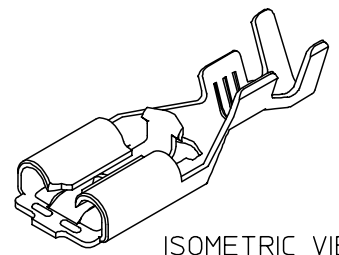
PROJECT NO.

B

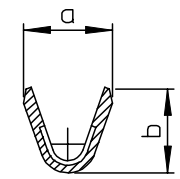
DO NOT SCALE DRAWING
DIMENSION IN METRIC

0.5 MAX.
CUT OFF TAB

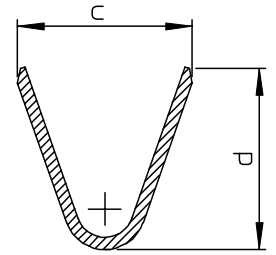
PITCH=18.8



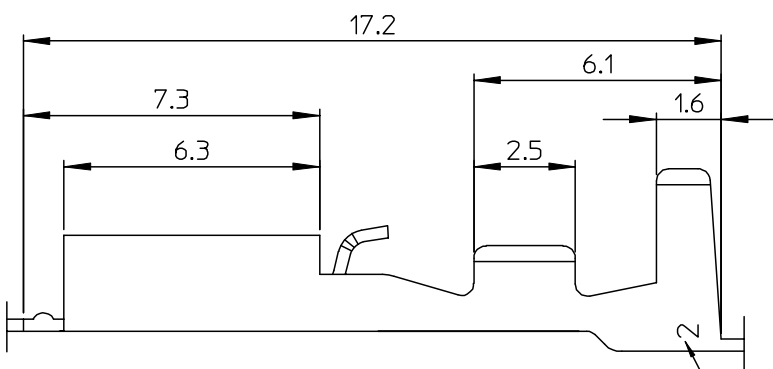
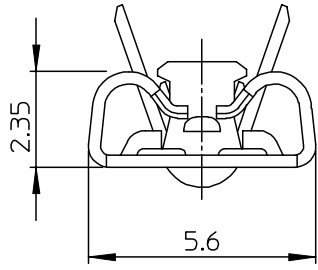
ISOMETRIC VIEW



SECTION A-A



SECTION B-B



TRADE MARK
(MK2)

MATERIAL NO.	ENG NO.	DIMENSION				WIRE RANGE
		a	b	c	d	
579909710	57990-9710	2.3	2.1	4.3	4.5	AWG 26 - 20
579909810	57990-9810	3.5	3.3	5.8	5.2	AWG 20 - 14

- NOTES
1. MATERIAL : BRASS, 0.3mm THICKNESS
 2. FINISH : PRE-TIN PLATED
(1.0MICROMETER MIN. TIN OVER 0.3MICROMETER MIN. COPPER)
 3. MATING TAB : 0.5mm THICKNESS, 4.75mm WIDTH

NEW RELEASED ECN NO. KR2003-0193 DRWN: C.B.CHIN 03/01/20 CHK: W.Y.YANG APPR: C.W.LEE	QUALITY SYMBOLS MAJOR $\nabla = 0$ CRITICAL $\nabla C = 0$	GENERAL TOLERANCES: (UNLESS SPECIFIED)		SCALE 8:1	DESIGN UNITS <input checked="" type="checkbox"/> mm <input type="checkbox"/> INCH	THIRD ANGLE PROJECTION <input checked="" type="checkbox"/> <input type="checkbox"/>	DIMENSIONS: <input type="checkbox"/> mm <input checked="" type="checkbox"/> INCH <input type="checkbox"/> mm ONLY	SHT	REV	
		4 PLACES	$\pm 0.$	$\pm -$	DRAWN BY & DATE C.B.CHIN 02/09/09	TITLE: .187 MP-LOCK REC' TERMINAL FOR SLEEVE				
		3 PLACES	$\pm 0.$	$\pm -$	CHECKED BY & DATE W.Y.YANG 02/09/09					
		2 PLACES	± 0.20	$\pm -$	APPROVED BY & DATE C.W.LEE 02/09/09	MOLEX INCORPORATED				
1 PLACE	± 0.30	$\pm -$	ANGULAR: $\pm 1^\circ$	CAD FILENAME S57990AA.MI	MATERIAL NO. SEE TABLE	DRAWING NO. SD-57990-001	SHEET NO. 1 OF 1	SIZE B		
DRAFT WHERE APPLICABLE MUST REMAIN WITHIN DIMENSIONS				THIS DRAWING CONTAINS INFORMATION THAT IS PROPRIETARY TO MOLEX INCORPORATED AND SHOULD NOT BE USED WITHOUT WRITTEN PERMISSION.				KOREA MX-A3		